



September 1, 2010

Lynn Carter
Regulatory Officer
Mackenzie Valley Land and Water Board
P.O. Box 2130
7th Floor – 4910 50th Avenue
Yellowknife, NT X1A 2P6

RE: Water Licence – MV2009L3-0007
Submission of GPS Coordinates for Landfill SNP Stations

Dear Ms. Carter,

As per item B.9 of the City's water licence, submitted herein is a map showing the location and GPS coordinates of the SNP stations at the landfill.

The description of SNP station 0032-13A, which is to replace 0032-13, states it is to monitor runoff and seepage from both the Solid Waste Disposal Facility (SWF) and the Snow Disposal area. As the water quality from the SWF differs from the snow disposal area, the City has decided to sample at both stations 0032-13 and 0032-13A. The description of each station provided in the water licence is shown below.

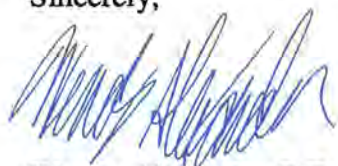
Station Number	Description	Sampling Frequency
0032-13	<p>A point approximately 400 metres northwest of the Solid Waste Disposal Facilities above the confluence of an unnamed feeder creek.</p> <p>Rationale: To monitor Water quality associated with runoff and seepage from the Solid Waste Disposal Facility.</p>	<p>Active until replaced with 0032-13A</p> <p>Water quality sampling twice each year during the months of June and September.</p>

Station Number	Description	Sampling Frequency
0032-13A	<p>A point approximately 400 metres northwest of the Solid Waste Disposal Facilities that captures the drainage from the facility and drainage from the snow disposal area. SNP 0032-13A replaces SNP 0032-13.</p> <p>Rationale: To monitor Water quality associated with runoff and seepage form the Solid Waste Disposal Facility and snow disposal area.</p>	Water quality sampling twice each year during the months of June and September.

As is shown on the map, station 0032-13A is located at the snow dump area, and station 0032-13 is located to the west of station 0032-13A.

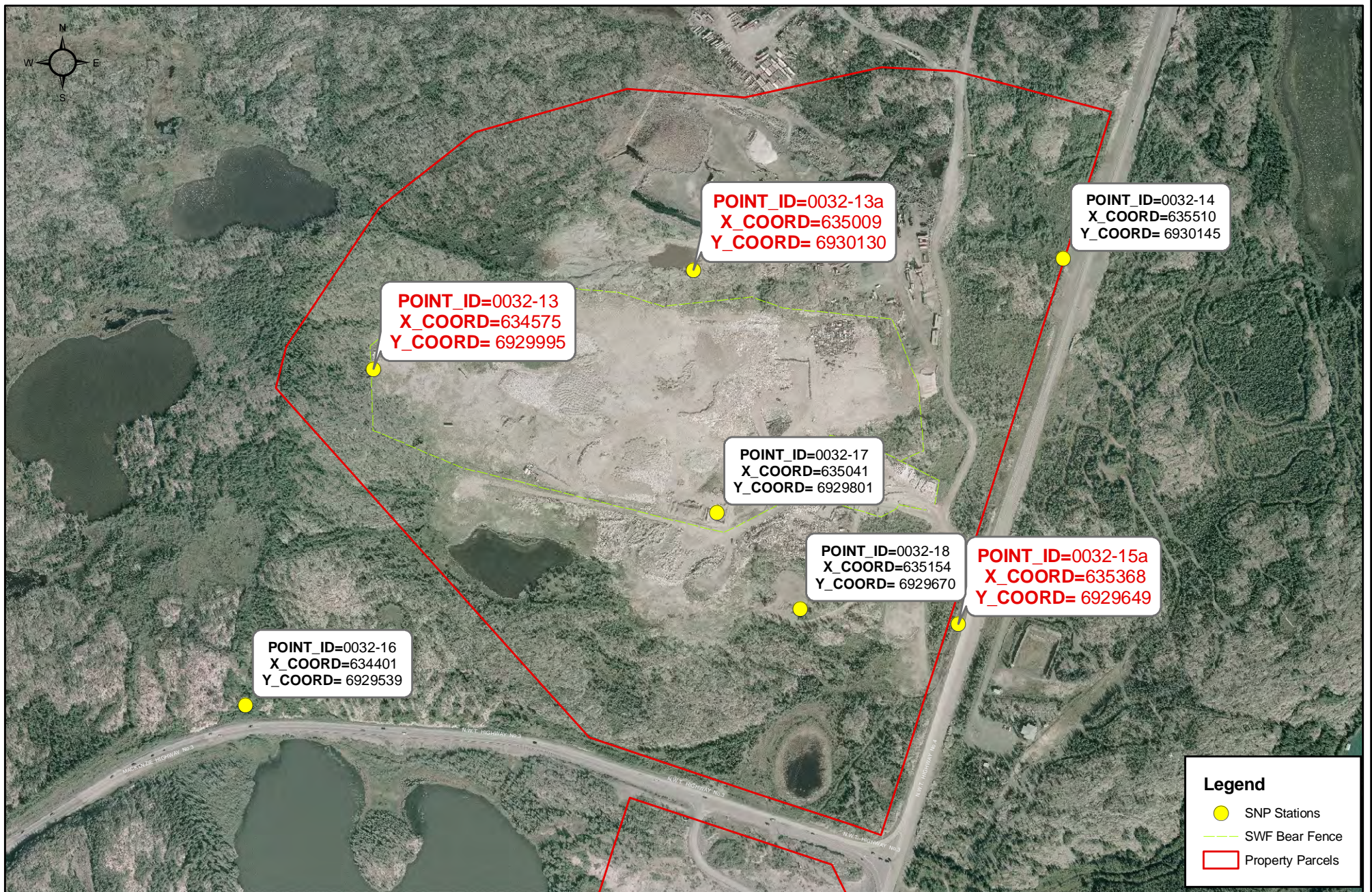
Should you have any questions or require additional information please contact me at 920-5689 or by email at walexander@yellowknife.ca.

Sincerely,



Wendy Alexander, P.Eng.
Municipal Works Engineer
Public Works & Engineering

Encl. Map of Landfill SNP Stations with GPS Coordinates



POINT_ID=0032-13
X_COORD=634575
Y_COORD= 6929995

POINT_ID=0032-13a
X_COORD=635009
Y_COORD= 6930130




POINT_ID=0032-14
X_COORD=635510
Y_COORD= 6930145

POINT_ID=0032-17
X_COORD=635041
Y_COORD= 6929801

POINT_ID=0032-18
X_COORD=635154
Y_COORD= 6929670

POINT_ID=0032-15a
X_COORD=635368
Y_COORD= 6929649

POINT_ID=0032-16
X_COORD=634401
Y_COORD= 6929539

- Legend**
-  SNP Stations
 -  SWF Bear Fence
 -  Property Parcels



City Of Yellowknife
Public Works & Engineering

PROJECT:	Landfill SNP Stations	SCALE: 1:7,000 NAD 1983 UTM Zone 11N	CREATED BY: G. Griffiths
TITLE:	GPS Coordinates of SNP Stations	FILE: 10_Water_Licence_SNP_Stations.mxd	DATE: August 30, 2010