

Community Engagement Plan

Term	Definition
Aboriginal organization/government	an organization representing the rights and interests of a First Nation (as defined in section 2 of the MVRMA) Métis, or Inuit community or region, a Tłı̄cho First Nation, or the Tłı̄cho Government.
affected community	a community that is affected, or is predicted to be affected, either adversely and/or beneficially, by a proposed project.
Boards	Land and Water Boards of the Mackenzie Valley, as established by the <i>Mackenzie Valley Resource Management Act</i> .
duty to consult	Practically, the duty to consult is the process of ensuring that Aboriginal people's rights are fairly considered in government conduct that could potentially affect those rights, particularly in the approval of developments involving land and resources. The duty to consult is an obligation of the government as a whole. In <i>Haida, Taku River</i> , and <i>Mikisew Cree</i> , the Supreme Court of Canada held that provincial and federal governments have a legal obligation to consult when the Crown contemplates conduct that might adversely impact potential or established Aboriginal or Treaty Rights.
engagement	the communication and outreach activities a proponent is required, by the Boards, to undertake with affected communities and Aboriginal organizations/governments prior to and during the operation of a project, including closure and reclamation phases.
engagement plan	a document that clearly describes how, when, and what engagement will occur with an affected community and Aboriginal organization/government at each stage during the life of the project.
engagement record	a record, including supporting documents, that details the engagement processes and outcomes between the proponent and the affected community and Aboriginal organization/government.
GLWB	Gwich'in Land and Water Board
MVLWB	Mackenzie Valley Land and Water Board
MVRMA	Mackenzie Valley Resource Management Act
NWT	Northwest Territories
project	any development that requires a land use permit or water licence.
proponent	applicant for, or holder of, land use permits and/or water licences.
public participation	a general term for any process that involves public input in decision making. It involves the process or activity of informing the public and inviting them to have

	input into the decisions that affect them
SLWB	Sahtu Land and Water Board
WLWB	Wek'èezhii Land and Water Board

Introduction

This Community Engagement Plan (CEP) has been developed to ensure continuing consultation with affected communities in a progressive manner as the Mon Gold Mine project develops. The CEP is based upon the guidelines published by the Mackenzie Valley Land and Water Board, October 2012 “Community Engagement Guidelines for Applicants and Holders of Water Licences and Land Use Permits”, “Engagement and Consultation Policy” June 1, 2013, and extracts from draft exploration agreements developed by the Yellowknife Dene First Nation.

The CEP recognizes the statutory requirement for consultation and attempts to make it inclusive and effective.

The affected communities have been identified by reference to the MVLWB guidelines and in preliminary discussions with these communities.

The Best Practices guidelines in Appendix A of Community Engagement Guidelines for Applicants and Holders of Water Licences and Land Use Permits is followed.

The CEP is prepared to accommodate an application for small scale mining; however it anticipates further work that will require additional consultations.

The Project

Overview

It is planned to complete underground sampling of an inferred extension to a mine that was operated in the 1990's. This would be the first phase and if successful would follow with applications for continued mining and to re-install a 100 tpd milling circuit to process this material and subsequently developed material. Property-wide exploration will be conducted from the same camp.

Location

The Mon Gold Mine is located within the Yellowknife Greenstone Belt, 50 km north of Yellowknife. It was discovered in 1937 by prospectors under contract to Cominco Ltd. Cominco sunk a shaft in 1938 and 1939, completed diamond drilling in 1947, 1950, 1963, and between 1965 and 1975 allowed a local prospector, Jack Stevens to high-grade the surface exposures. In 1986 Cominco optioned the property to Troymin Resources who completed 11 diamond drillholes. In 1987, Troymin and partner Coronado Resources drilled another 12 holes and allowed the option to lapse. In 1988 Dave Webb optioned the Mon Property and with partner Can-Mac Exploration completed six diamond drillholes identifying a small resource. In 1989 Webb completed 49 meters of decline and 15.5 meters of raising on an east-dipping vein. A total of 2,300 tonnes of material was stoped from this vein and the material was custom milled at the Ptarmigan Mill in Yellowknife. In 1990 the property was leased to Ger Mac Construction Ltd and a 37 m crosscut was driven from a new adit (central adit) and 77m of vein was developed for mining.

Can-Mac defaulted on the option and the property reverted back to Webb, and between 1991 and 1997, Ger Mac Construction Ltd extracted an estimated 10,000 tonnes and processed this through a 100 tpd crush / grind / gravity mill on site. Mining ceased in 1997 and all equipment was removed and the tailings containment area was graded, capped with a plastic liner and covered with 35 cm of gravel.

New Discovery Mines Ltd applied for permits and licenses to reinstall the mine and mill and after discussions with the affected communities conceded to make the application in two parts. The permits and licenses to install the camp and related infrastructure and to commence mining the next level of the Mon Mine was made to the MVLWB and Land Use Permit (MV2013C0021) and Water License (MV2014L2-0002) was received in July 3, 2014. Consultations with the affected communities continued to seek support and input on the current milling application.

Resource and Reserves

There are no NI 43-101 Reserves or Resources at the Mon Gold Mine. NI 43-101 governs a company's public disclosure of scientific and technical information about its mineral projects.

It is believed that the previously completed mining has established a mineralized trend that can be assessed by diamond drilling or additional underground development. A cost-benefit analysis suggests that the underground development is the best way to proceed.

Engagement with Affected Parties

What is Engagement?

Engagement is defined by the MVLWB as “the communication and outreach activities a proponent is required, by the Boards, to undertake with affected communities and Aboriginal organizations/governments prior to and during the operation of a project, including closure and reclamation phases.” One might also believe engagement should go beyond this to communicate with the affected communities on all matters, even those not directly related to the project to get a perspective on what might be material in the future and to add “colour” to what decisions are made.

The proponent is currently conducting minimal activities primarily to complete consultations. These consultations have primarily been by phone calls, emails, and in some instances face to face. As the project is primarily conceptual at this stage substantial accommodations can be made.

Affected Communities

The project lies within the Yellowknife Dene First Nations traditional lands, on traditional lands identified as Monfwi Gogha De Niitlee lands, and on Metis lands (Figure 1).

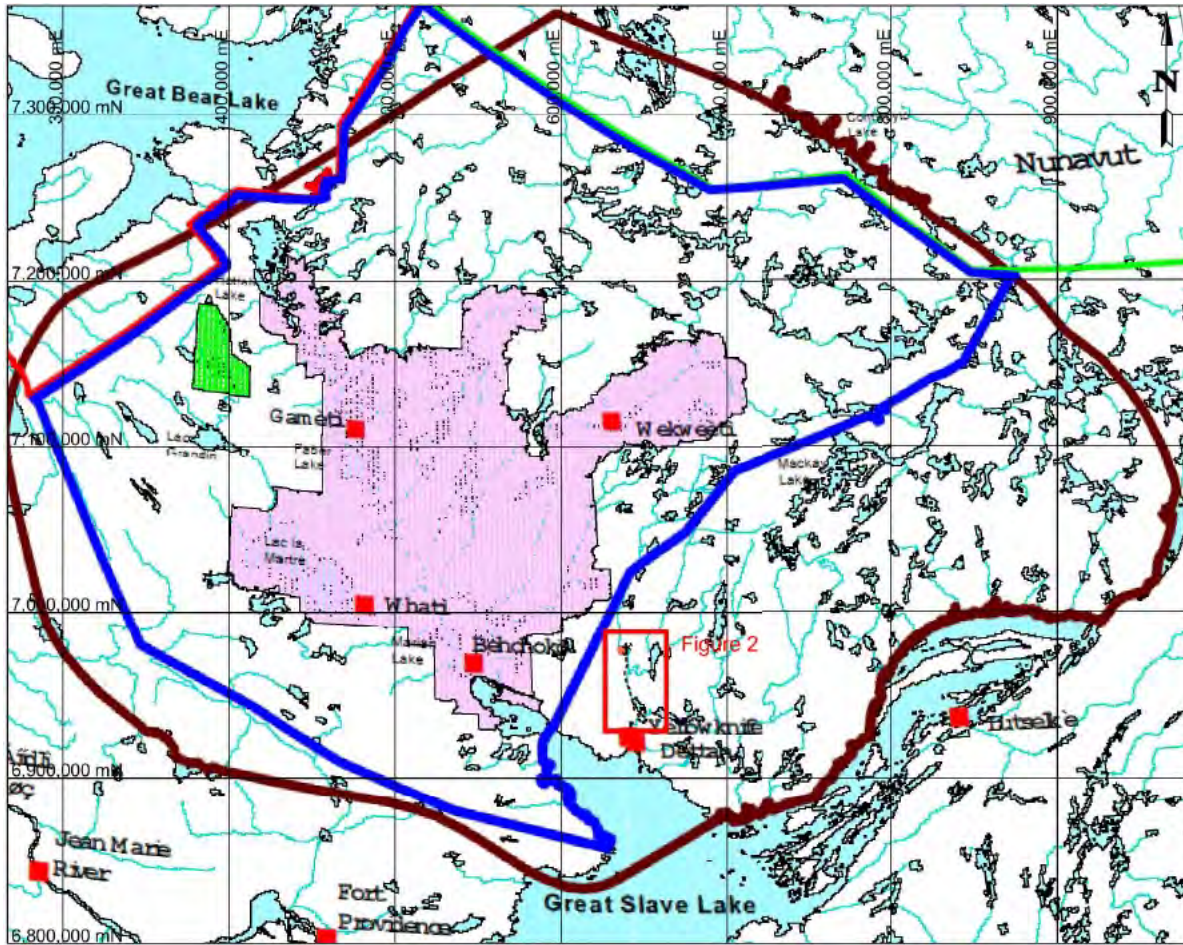


Figure 1. Location of Project Area and inset of Figure 2.

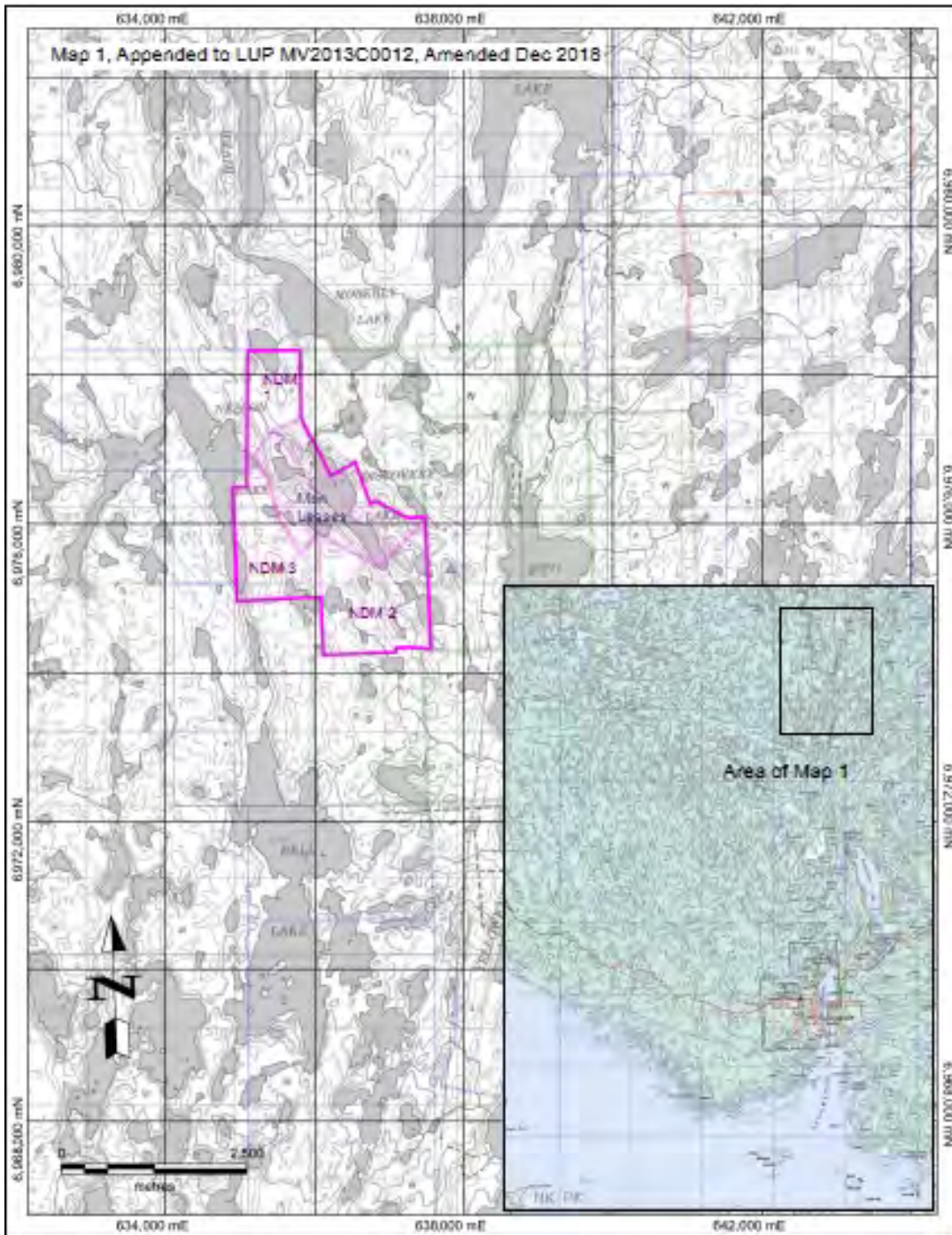


Figure 2. Location of Project Area

What are the Benefits of Engagement?

NDM

Engagement 2018

Engagement provides an opportunity to make sure all affected parties are aware of a proponent’s wishes, and the proponent can be made aware of the affected parties concerns. Ideally, all concerns can be accommodated in mutually satisfactory manners. Projects that are unacceptable to the affected parties, either by location, or process with no reasonable hope of accommodation can be avoided. This benefits all parties.

A structure can be created to deal with anticipated and unanticipated concerns so rectification and/or accommodation can be rapid and completed in a predetermined manner.

What Guides Engagement?

Engagement will focus on the proponents and affected parties concerns. The first steps in the process would be for the proponent to identify the potentially affected communities and to introduce themselves and plans to these communities. The communities will then guide the rest of the process with the proponent responding and providing appropriate guidance where possible.

1. Proponent Identify and Define the Project
2. Proponent Identify and Introduce themselves and the Project to the Communities
3. Communities respond with:
 - a. Requests for further information
 - b. Requests for meetings
 - c. Identify Issues of concern
4. Together, the Proponent and Concerned Communities work to accommodate issues
 - a. Proponent and Concerned Communities develop a communication and action structure to deal with issues that are of concern.

Engagement Plan Framework

Goals of Engagement

Initially, it is proposed that are three goals to engagement:

Goal		Commitment
1.	Inform	a. Communicate the plans, contingencies, and estimated effects on the communities honestly and accurately.

		b. Provide any and all information as requested.
2.	Listen	a. Provide clear lines of communications including who is responsible for each concern.
3.	Be Proactive	a. Meet with any representative of each community as requested to hear each concern and recommendations from these meetings.

More can be added after initial meetings.

Party Identification

Initial reviews have considered the following groups to be potentially affected by the Proponent's plans.

Yellowknives Dene First Nation

Akaitcho IMA Office

Tlicho Government

Kwe Beh Working Group

North Slave Metis Alliance

Mackenzie Valley Land and Water Board

Aboriginal Affairs and Northern Development Canada

Can-Nor

Department of Fisheries and Oceans

Environment Canada

GNWT – ENR

Prince of Wales Northern Heritage Centre

City of Yellowknife

Government of the NWT.

Company Contacts

All discussions concerning the Proponent can be directed to:

Dave R. Webb
President
New Discovery Mines Ltd.
1909 108 West Cordova St.,
Vancouver, B.C.
V6B 0G5

Phone: 604 818-1400

Email: dave@drwgcl.com

Engagement Techniques

All engagement will be person to person, either face to face, by telephone, or in written communication by post, fax, or email.

In person meetings will be at venues acceptable to all participants and appropriate for the discussions at hand. These may be on the proponent's project site or other location as mutually decided.

Engagement Work Plan

The Engagement Work Plan is currently involves phone calls, emails, and one on one meetings in any affected community. Contact has been made with the relevant development corporations as well as the political organizations of the affected communities. Presentations in paper form, electronic form, and three dimensional videos describing the proponents goals, issues, and some options have been identified and presented.

Communicating the Engagement Plan

Methods and timing on communicating the Engagement Plan has been on an ad hoc basis, largely initiated by the proponent but taking full advantage of industry events where representatives from the communities may be present. This will continue in the future, but specific times will be defined as requested by the communities.

Implementing the Engagement Plan

Implementing the Engagement Plan has been implemented and has been ongoing since May 2012. The small footprint, environmentally, economically and socially has made it difficult to

get traction within the communities, as such consultation has largely been at the proponents request. It is unlikely to change unless the communities can obtain more depth as the current contacts are stretched very thin. Assuming this is the status going forward, it is intended to increase consultations within each community as our development increases in size.

Follow-up Reporting

The proponent will follow up on a quarterly basis if requested, and on an annual basis within each affected community or as requested by these communities. Accommodations can change with time, and the proponent intends to remain as flexible as possible in these discussions.

Engagement Plan Review

The Engagement Plan will be reviewed annually and on an ad hoc basis as regulatory and status in the project area evolves. Any deficiencies or modification required to improve its effectiveness and inclusiveness will be considered and implemented as possible.

Consultation Log	Community	Contact	Contact	Discussion
September 10, 2013	AANDC	email AANDC	Don Aubrey / James Lav	Consultation confirmation, whom
September 10, 2013	AANDC	email from AANDC	cc Christian Bertelstein	Confirmation of consultation groups
October 25, 2018	ADFN	call 867 394-3313		left message and phone number
October 26, 2018	ADFN	call 867 394-3313	Annie Boucher	executive.director@Akatcho.ca Send details by email for forwarding to Stephanie Poole
October 26, 2018	ADFN	email AB	Annie Boucher	executive.director@Akatcho.ca Details to be forwarded
October 26, 2018	ADFN	email from AB	Annie Boucher	Details forwarded to AP
November 1, 2018	ADFN	email to AB		Request to call Stephanie Poole directly?
November 1, 2018	ADFN	email from AB	SP	email forwarded to SP.
November 1, 2018	ADFN	email from SP	AB	Call at my convenience
November 1, 2018	ADFN	email to SP	AB	At what number
November 2, 2018	ADFN	Called SP		wrong numbers
November 2, 2018	ADFN	email to SP	AB	Can't call
November 2, 2018	ADFN	email from AB		Provide 867 370 3217 as correct number
November 2, 2018	ADFN	Called SP		Not in, call Monday
November 5, 2018	ADFN	Called SP		Not in at 1:00 pm, try at 1:30 pm
November 5, 2018	ADFN	Called SP		Suggest EA with YKDFN. Cc SP in communication to assist.
October 11, 2013	City of Yellowknife	email Mayor Heyck		Introduce NDM, DRW, Mon Gold Mine
October 17, 2013	City of Yellowknife	email from Mayor Heyck		Reply with interest to hear more.
October 18, 2013	City of Yellowknife	email from Judy Brennan	re: Mayor H	Arrange meeting on November 5th.
October 18, 2013	City of Yellowknife	Email to JB		Confirm time
October 18, 2013	City of Yellowknife	email from JB		confirmed.
October 28, 2013	City of Yellowknife	email to JB		Send copy of deck
October 28, 2013	City of Yellowknife	email from JB		confirmed.
June 18, 2014	Denedeh Investment	email to TT	cc DB, GH	request meeting in June
June 26, 2014	Denedeh Investment	DB, TT		meet and discuss project, financing potential
May 1, 2014	Kwe Beh WG	email from Itoah Scott-Enns		Up coming Kwe Beh WG schedule
May 1, 2014	Kwe Beh WG	email to Itoah Scott-Enns		Thanks, plus update on my schedule
August 24, 2012	NSMA	email to Bill Enge	Bill Enge	Initial contact with NSMA
September 11, 2013	NSMA	email Sheryl Grieve		NSMA introduction
September 24, 2013	NSMA	call Matt Hover, NSMA		Initiate discussion, confirm contacts
September 24, 2013	NSMA	email to Eric Binion, NSMA		Introduce project
October 1, 2015	NSMA	call Shin Shiga		out of office, suggest we email
October 1, 2015	NSMA	email Shin Shiga		Introduction, request to call.
October 2, 2015	NSMA	call Shin Shiga		867 873-6762 Discuss history and project.
October 13, 2015	NSMA	email SS		Help to contact BE

October 13, 2015	NSMA	email from SS		Help to contact BE
October 7, 2017	NSMA	email to SS		Introduction on work
October 29, 2017	NSMA	email from NG		reply of support, questions
September 27, 2018	NSMA	NG		Introduction of amendment request
September 28, 2018	NSMA	NG		Confirmation of engagement log
October 1, 2018	NSMA	NG		Confirmation of engagement log
October 2, 2018	NSMA	NG		Outline proposed amendment again
October 18, 2018	NSMA	email from NG		Confirmation, correct Eric Hover to Eric Binion
September 11, 2013	Tlich			Tlich introduction
September 11, 2013	Tlich	email from Kerri Garner	cc Itoah Scott-Enns	Confirmation of interest, referral to exploration and mining group
September 20, 2013	Tlich	email from Itoah Scott-Enns	cc Kerri, Ginger	Invitation to meet Chiefs and development committee, November 5,6
September 20, 2013	Tlich	email to Itoah Scott-Enns	cc Kerri, Ginger, Rozema	Acceptance and request for format/expectations
September 23, 2013	Tlich	email to Itoah Scott-Enns	cc Kerri, Ginger, Rozema	Background information for NDM and DRW
October 24, 2013	Tlich	email from GG	cc KG, IS, REW	Appreciate DD, please lets talk by phone
October 24, 2013	Tlich	call from GG		Confirm time of meeting at 10:30 am. Details to follow
October 28, 2013	Tlich	email from IS	cc GG	Confirm time of meeting at 10:30 am. Details to follow
October 28, 2013	Tlich	email to IS	cc GG	Send copy of deck
November 5, 2013	Tlich	meeting with Tlich Kwe Beh group		present project, answer questions
October 17, 2018	Tlich	email to ZN		Copy of map and outline of amendment request. Request for follow-up
November 1, 2018	Tlich	email to ZN		Can we call to discuss?
November 1, 2018	Tlich	email from ZN		Out of office until November 8th
November 5, 2013	Yk	Meeting with City of Yellowknife		present project, answer questions
May 28, 2012	YKDFN	867 873-6533	Call Roy Erasmus jr	left message with Candice
May 28, 2012	YKDFN	esangris@ykdene.com	Ed Sangris	request meeting in June
May 28, 2012	YKDFN	fsangris@ykdene.com	Fred Sangris	request meeting in June
June 4, 2012	YKDFN	rerasmus@detoncho.com	Roy Erasmus Jr	email to confirm contact, request meeting
June 6, 2012	YKDFN	rerasmus@detoncho.com	Roy Erasmus Jr	received email confirming contact number
June 6, 2012	YKDFN	rerasmus@detoncho.com	Roy Erasmus Jr	Called and discussed meeting June 28/29.
June 25, 2012	YKDFN	867 873-6533	Call Roy Erasmus jr	left message with Candice
June 26, 2012	YKDFN	867 873-6533	Call Roy Erasmus jr	transferred to Rick Miller
June 26, 2012	YKDFN	visit Rick Miller		update on activities, suggest options available, review video.
July 9, 2012	YKDFN	Call Ykdene 867 873-8951	tslack@ykdene.com	Forwarded to Todd Slack. Discussed desire to engage. Forwarded Yellowknives2.pdf
August 3, 2012	YKDFN	email from Todd Slack re: GoogleEarth file.		
August 6, 2012	YKDFN	email to Todd Slack re: GoogleEarth file.		Offer to discuss this and any other issues.
August 22, 2012	YKDFN	email to Todd Slack re: GoogleEarth file.		Offer to discuss this and any other issues.
September 6, 2012	YKDFN	email to Todd Slack		re: permits and consultations

September 6, 2012	YKDFN	email from Todd Slack		re: permits and consultations
October 2, 2012	YKDFN	email from Todd Slack with EA attached.		Will call next week.
October 14, 2012	YKDFN	email to TS re: EA.		
November 14, 2012	YKDFN	Talked to Todd Slack at YkGF		Discussed revisions on EA.
January 16, 2013	YKDFN	Email EA to Todd Slack		
January 17, 2013	YKDFN	email from Todd Slack		regarding EA
January 17, 2013	YKDFN	email to Todd Slack		regarding EA
March 4, 2013	YKDFN	meet at PDAC		Roy Erasmus Jr, Rick Miller Just a hello, brief discussion.
March 22, 2013	YKDFN	email to Todd Slack		Up date or news?
March 22, 2013	YKDFN	email from Todd Slack		automatic out of office reply
March 22, 2013	YKDFN	email from Todd Slack	cc Gault	Been very busy. Perhaps next week.
March 22, 2013	YKDFN	email to Todd Slack	cc Gault	Great news. Preparing applications
April 2, 2013	YKDFN	email from TS	cc Gault, Freeman	EA not accepted, come meet in late April
April 3, 2013	YKDFN	email to TS	cc Gault, Freeman	Lets meet with Chief and Council
April 9, 2013	YKDFN	email to TS		Any word on meetings? Any preparation of preferred format?
April 29, 2013	YKDFN	email to TS		Any word on meetings? Any preparation of preferred format?
April 29, 2013	YKDFN	email from TS	cc Gault, Freeman	No time in April, on May 9 agenda
April 29, 2013	YKDFN	email to TS	cc Gault, Freeman	Thanks, can I assist in preparing anything?
May 27, 2013	YKDFN	email to TS	cc Gault, Abel	Just returned, any updates
June 3, 2013	YKDFN	email to TS	cc Gault, Abel	Will be in Yellowknife June 24/25, July 4th Can I meet?
June 21, 2013	YKDFN	email to TS	cc Gault, Abel	Will be in Yellowknife June 24/25, July 4th Can I meet?
June 24, 2013	YKDFN	phone call from TS		Can we talk?
June 25, 2013	YKDFN	Visit TS in N'dilo		Discuss timing and focus of EA modifications
July 12, 2013	YKDFN	email to TS		Modified Mon video on FTP site
July 15, 2013	YKDFN	email to TS		Follow-up on video, discussions on June 25th
July 17, 2013	YKDFN	call TS		Discuss timing of LUP application. Cannot approve in writing
September 10, 2013	YKDFN	email TS		LUP application is ready. Discussion? Video presentaion forwarded
September 10, 2013	YKDFN	email TS	cc Gault, Abel	Request input on Engagement Plan
September 25, 2013	YKDFN	email TS	cc Gault, Abel	Request input on Engagement Plan again
October 7, 2013	YKDFN	Call TS		in meeting, will call back in 15 to 20 minutes
October 7, 2013	YKDFN	Call 867-392-6381		to speak to Itoah / transferred to Margari Matheson Maud, left message
October 7, 2013	YKDFN	Call from TS		no comments on consultation plan will be coming
October 15, 2013	YKDFN	email to Itoah Scott-Enns	cc Kerri, Ginger, Rozema	Any confirmation on the meeting?
October 15, 2013	YKDFN	email from Itoah Scott-Enns	cc KG,GG,REW	confirmation of meetings
October 15, 2013	YKDFN	email from Ginger Gibson		Responding to earlier email
October 31, 2013	YKDFN	email to TS	cc SG, EA	advise of Yk trip. Can meet for coffee

December 4, 2013	YKDFN	email to TS		update on LUP application and revision.
January 3, 2014	YKDFN	email to TS	cc SG, EA	advise of Water License application. Ask about Round-up
March 25, 2014	YKDFN	email to TS	cc SG, EA	Request advise on an archaeological study
March 25, 2014	YKDFN	email from TS	cc SG, RF	Advised to contact Randy Freeman
March 25, 2014	YKDFN	email to RF		Advised to contact Randy Freeman
April 8, 2014	YKDFN	email from RF		Introduction, TK and archeological studies
April 8, 2014	YKDFN	email to RF	cc GVH	Introduction, schedule. Can we talk.
June 18, 2014	YKDFN	email to TS	cc SG, EA, GH	request meeting in June
June 18, 2014	YKDFN	email to Randy Freeman	cc GH	request meeting in June
June 24, 2014	YKDFN	email from TS	cc JB	Invitation to meet L&EC Thursday
June 24, 2014	YKDFN	email to TS	cc JB	Acceptance and request for format/expectations
June 25, 2014	YKDFN	email from Joanne Black		Confirm meeting with L&EC
June 25, 2014	YKDFN	email from TS	cc JB	Discuss meeting with L&EC
June 26, 2014	YKDFN	Land and Environment Committee		Present at 3:00 PM to L&EC
June 26, 2014	YKDFN	Randy Freeman		Meet and discuss Heritage Study. RF to set up with PWHC and Golder if possible
July 7, 2014	YKDFN	Johanne Black	cc TS	Request digital version of presentation.
July 7, 2014	YKDFN	Johanne Black	cc TS	Email pdf version, will mail disk on return to Vancouver
July 8, 2014	YKDFN	Johanne Black	cc TS	confirmed.
July 16, 2014	YKDFN	Randy Freeman		Check on progress to do Heritage Study
July 17, 2014	YKDFN	Randy Freeman		Not great...can we wait until next year.
July 17, 2014	YKDFN	Todd Slack		Raise subject of permits for milling
July 17, 2014	YKDFN	Randy Freeman		We can wait, but it is unfortunate
July 18, 2014	YKDFN	Todd Slack		Reply of concern but basic structure
August 7, 2014	YKDFN	Johanne Black	sg, ts, RF	Record of Engagement review
August 8, 2014	YKDFN	Johanne Black		Review of Engagement Record
September 8, 2014	YKDFN	Randy Freeman	cc TS	Heritage Study discussion
October 8, 2014	YKDFN	Randy Freeman		Heritage Study discussion
October 9, 2014	YKDFN	Randy Freeman		Heritage Study discussion
October 17, 2014	YKDFN	Randy Freeman		Follow up on HS
April 13, 2015	YKDFN	Randy Freeman	TS	Heritage Study discussion
May 13, 2015	YKDFN	email to Todd Slack		plan phone call
May 13, 2015	YKDFN	email from Todd Slack		Advised to talk to RF and RC
May 13, 2015	YKDFN	emails with Randy Freeman		Confirm phone call for 5/14/15
May 18, 2015	YKDFN	emails with Randy Freeman	cc GH	Introduce us to Rachel Crapeau
May 18, 2015	YKDFN	emails with Randy Freeman	cc GH	Introduce us to Rachel Crapeau. Update?
June 1, 2015	YKDFN	emails with Randy Freeman	cc RC	Phone call soon?

June 11, 2015	YKDFN	Call Randy Freeman		Left message
June 11, 2015	YKDFN	email to Rachel C	cc RC	Can we talk?
June 12, 2015	YKDFN	Call Randy Freeman		on cell. RC back from Edm. No word from Golder
June 12, 2015	YKDFN	email to Rachel C	cc RC	Can we talk?
July 14, 2015	YKDFN	email to V.H		Can we talk, include Rachel C for lunch Wednesday? Frm GH
July 28, 2015	YKDFN	email to Rachel C	cc RF	Update on permitting status
July 30, 2015	YKDFN	email from Johanne Black	cc Alex Power	Update on YKDFN structure post TS.
August 6, 2015	YKDFN	email to JB	cc AP	Thanks for updates
August 17, 2015	YKDFN	email to AP	cc JB	Available for phone call?
August 18, 2015	YKDFN	email to AP	cc JB	Confirm call 9:00 am PDT Wednesday
August 19, 2015	YKDFN	call AP		Introduction, backgrounds.
October 1, 2015	YKDFN	call Bob Murphy		update on operations. WR discussion, tanks, camps.
October 6, 2015	YKDFN	email AP		Discuss consolidation of permits and licenses
October 6, 2015	YKDFN	email from AP		Discuss consolidation of permits and licenses. Set up time at 3:00 pm
October 6, 2015	YKDFN	Call from AP		Discuss consolidation of permits and licenses. Agreed. Note sent to MVLWB
May 17, 2017	YKDFN	email to AP		Extract from NI 43-101, invitation to meet.
July 15, 2017	YKDFN	email to AP	RH, GH	request for meeting if desired
July 17, 2017	YKDFN	email from AP	RH, GH	Yes, let's coordinate
July 18, 2017	YKDFN	email from AP	RH, GH	Yes, Week of Aug 14-18
July 27, 2017	YKDFN	Call AP		potential meeting
August 9, 2017	YKDFN	email from AP	RH, GH	September elections. Perhaps after Sept 9th
August 18, 2017	YKDFN	email from AP	RH, GH	Datafiles in shp
August 19, 2017	YKDFN	email from AP	RH, GH	Datafiles in shp Files sent
August 19, 2017	YKDFN	Email to AP	RH, GH	Notify observation of tent rings at Narrow Lake
August 21, 2017	YKDFN	email from AP	RH, GH	Thanks. Datafiles in shp
August 21, 2017	YKDFN	email from AP	RH, GH	Thanks re observation on tent rings at Narrow Lake
July 19, 2018	YKDFN	Email to JB		Update and request for discussion on results.
July 19, 2018	YKDFN	email from JB		Set up meeting on August 8?
July 19, 2018	YKDFN	Email to JB		Let's meet.
July 20, 2018	YKDFN	email from JB		Set up call on August 8th.
August 3, 2018	YKDFN	email from JB	DRW	Call at 10 AM?
August 3, 2018	YKDFN	Email to JB	JB	Set up call.
August 8, 2018	YKDFN	Email to JB		Should I call on your extension?
September 19, 2018	YKDFN	email to JB	JB, PE	Update. Call to discuss?
September 19, 2018	YKDFN	email from JB	DRW, PE	Response next week. Too busy
September 19, 2018	YKDFN	email to JB	JB, PE	Thanks for response

September 26, 2018	YKDFN	Call JB		Leave message
September 28, 2018	YKDFN	email to JB	JB, PE	Confirmation of engagement log
November 5, 2018	YKDFN	emailed JB	SP	Can we talk Tuesday? Is an EA a solution?
November 5, 2018	YKDFN	email from JB	SP	JB will phone tomorrow
November 5, 2018	YKDFN	emailed JB	SP	Yes, except 12 to 1 Yk time.
November 5, 2018	YKDFN	email from JB	SP	confirmed.
November 7, 2018	YKDFN	email from JB	SP	Confirming discussions for SP
November 14, 2018	YKDFN	email from PE	JB	Checking availability for Conf Call
November 15, 2018	YKDFN	email to PE	JB	Outline times
November 15, 2018	YKDFN	email from PE	JB	Setting up meeting time
November 16, 2018	YKDFN	email from PE	JB	Confirming 10 am
November 16, 2018	YKDFN	email from JB	PE	Reset to 11:30, confirm availability
November 16, 2018	YKDFN	email from JB	PE	Reset to 3 pm
November 16, 2018	YKDFN	email from PE	JB	Try Nov 19th AM
November 16, 2018	YKDFN	email from JB	PE	Confirmed to 10 am Nov 19.
November 16, 2018	YKDFN	email to JB	PE	DRW Travelling to Yk.
November 19, 2018	YKDFN	email from PE	JB	Different time on 19th?
November 19, 2018	YKDFN	email from JB	PE	meet in person?
November 19, 2018	YKDFN	email to JB	PE	Confirm available, set time to 4 pm
November 19, 2018	YKDFN	email from JB	PE	Confirm available, set time to 4 pm
November 19, 2018	YKDFN	Meet JB, EL, PE		Discuss LUP amendment. WR an issue. Discuss monitor. Informed consent
November 26, 2018	YKDFN	email JB, PE	GVH	email map, retract WR option. Initiate monitor details.

Appendix E - Pre-Submission Engagement Record (Summary and Log) Template ¹³

1. Pre-Submission Engagement Summary

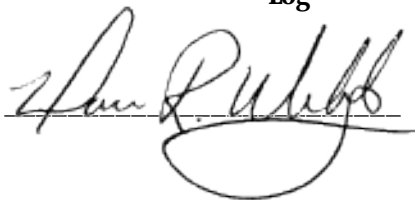
Name of Proponent: New Discovery Mines Ltd.

Name of Affected Party: North Slave Metis Association

Name(s) of representative(s) from affected party who participated in engagement	Dates of Engagement (e.g. list dates or range of dates)	Reason(s) for Engagement (e.g., application for timber harvesting)	Overview of Issue(s) Resolved	Overview of Issue(s) Unresolved
email to Bill Enge email to Sheryl Grieve Call	August 24, 2012 Sept 11, 2013	Mine Development Mine Development	Introduction Re-engage	
and email Eric Hover Call	Sept 24, 2013	Mine Development	Contact data	
and email Shin Shiga	Oct 1 to Oct 13 2014	Mine Development	Review project, discuss history	
email N. Goodeman	Oct. 7 to Oct 29, 2017 and Sept 27-28, 2018 and Oct 1-2, 2018	Mine Development and exploration	Reply and support of responsible development Confirm engagement	

Log

Signature of Proponent (representative):



Signature of Affected Party (representative): ¹⁴ _____

¹³ A summary sheet for each affected party should accompany the log (which may be a chronological list of all engagement with all parties).

¹⁴ These signatures represent agreement on the contents of the log and record, but do not necessarily imply that the parties agree on the topics that were discussed.

2. Pre-Submission Engagement Log

Date	Attendees ¹⁵	Engagement Activity Type (e.g., written notification, face-to-face, workshop, etc.)	Issue(s) Raised by Affected Party	Recommendation From Affected Party	Proponent Response to issue - indicate if issue(s) was resolved or	Information materials provided to affected party (Y/N) ¹⁶	Written correspondence, meeting notes, and/or minutes (Y/N) ¹⁷

¹⁵ Note all parties present including government departments. If members of the public were present, please note this, but individual members of the public do not need to be named.

¹⁶ Not required to be submitted with application; however, may be requested by the Board.

¹⁷ Not required to be submitted with application; however, may be requested by the Board.

Appendix E - Pre-Submission Engagement Record (Summary and Log) Template ¹³

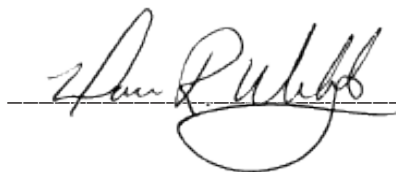
1. Pre-Submission Engagement Summary

Name of Proponent: New Discovery Mines Ltd.

Name of Affected Party: Akaitcho Interim Measures

Name(s) of representative(s) from affected party who participated in engagement	Dates of Engagement (e.g. list dates or range of dates)	Reason(s) for Engagement (e.g., application for timber harvesting)	Overview of Issue(s) Resolved	Overview of Issue(s) Unresolved
A. Boucher S. Poole	October 25, 2018 to November 5, 2018	Amend LUP to add area to DD plans	Make sure to connect with YKDFN	

Signature of Proponent (representative):



Signature of Affected Party (representative): ¹⁴ _____

¹³ A summary sheet for each affected party should accompany the log (which may be a chronological list of all engagement with all parties).

¹⁴ These signatures represent agreement on the contents of the log and record, but do not necessarily imply that the parties agree on the topics that were discussed.

2. Pre-Submission Engagement Log

Date	Attendees ¹⁵	Engagement Activity Type (e.g., written notification, face-to-face, workshop, etc.)	Issue(s) Raised by Affected Party	Recommendation From Affected Party	Proponent Response to issue - indicate if issue(s) was resolved or	Information materials provided to affected party (Y/N) ¹⁶	Written correspondence, meeting notes, and/or minutes (Y/N) ¹⁷

¹⁵ Note all parties present including government departments. If members of the public were present, please note this, but individual members of the public do not need to be named.

¹⁶ Not required to be submitted with application; however, may be requested by the Board.

¹⁷ Not required to be submitted with application; however, may be requested by the Board.

Appendix E - Pre-Submission Engagement Record (Summary and Log) Template ¹³

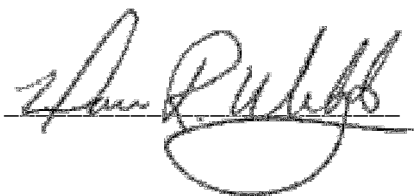
1. Pre-Submission Engagement Summary

Name of Proponent: New Discovery Mines Ltd

Name of Affected Party: Yellowknife Dene First Nation

Name(s) of representative(s) from affected party who participated in engagement	Dates of Engagement (e.g. list dates or range of dates)	Reason(s) for Engagement (e.g., application for timber harvesting)	Overview of Issue(s) Resolved	Overview of Issue(s) Unresolved
R. Erasmus Jr. R. Miller T. Slack Gault Freeman I. Scott-Enns R. Freeman J. Black R. Crapeau A. Power E. Liske, P. Evans	May 28, 2012 to November 28, 2018	Mine Development Diamond drill planning	Introduction of Project, meet with L and E. Committee, complete Heritage Study. Updates	

Signature of Proponent (representative):



Signature of Affected Party (representative): ¹⁴ _____

¹³ A summary sheet for each affected party should accompany the log (which may be a chronological list of all engagement with all parties).

¹⁴ These signatures represent agreement on the contents of the log and record, but do not necessarily imply that the parties agree on the topics that were discussed.

2. Pre-Submission Engagement Log

Date	Attendees ¹⁵	Engagement Activity Type (e.g., written notification, face-to-face, workshop, etc.)	Issue(s) Raised by Affected Party	Recommendation From Affected Party	Proponent Response to issue - indicate if issue(s) was resolved or	Information materials provided to affected party (Y/N) ¹⁶	Written correspondence, meeting notes, and/or minutes (Y/N) ¹⁷

¹⁵ Note all parties present including government departments. If members of the public were present, please note this, but individual members of the public do not need to be named.

¹⁶ Not required to be submitted with application; however, may be requested by the Board.

¹⁷ Not required to be submitted with application; however, may be requested by the Board.

Appendix E - Pre-Submission Engagement Record (Summary and Log) Template ¹³

1. Pre-Submission Engagement Summary

Name of Proponent: New Discovery Mines Ltd.

Name of Affected Party: Tlcho

Name(s) of representative(s) from affected party who participated in engagement	Dates of Engagement (e.g. list dates or range of dates)	Reason(s) for Engagement (e.g., application for timber harvesting)	Overview of Issue(s) Resolved	Overview of Issue(s) Unresolved
Kerri Garner I. Scott-Enns Ginger, Rosemary Zabey Nevitt	Sept 11, 2013 to May 1, 2014	Mine Development	Introduction and update, meet Kwe Beh Group	No response
	October 17, 2018 November 1, 2018	Amend LUP		

Signature of Proponent (representative):



Signature of Affected Party (representative): ¹⁴ _____

¹³ A summary sheet for each affected party should accompany the log (which may be a chronological list of all engagement with all parties).

¹⁴ These signatures represent agreement on the contents of the log and record, but do not necessarily imply that the parties agree on the topics that were discussed.

2. Pre-Submission Engagement Log

Date	Attendees ¹⁵	Engagement Activity Type (e.g., written notification, face-to-face, workshop, etc.)	Issue(s) Raised by Affected Party	Recommendation From Affected Party	Proponent Response to issue - indicate if issue(s) was resolved or	Information materials provided to affected party (Y/N) ¹⁶	Written correspondence, meeting notes, and/or minutes (Y/N) ¹⁷

¹⁵ Note all parties present including government departments. If members of the public were present, please note this, but individual members of the public do not need to be named.

¹⁶ Not required to be submitted with application; however, may be requested by the Board.

¹⁷ Not required to be submitted with application; however, may be requested by the Board.