

File: PTLKNTRR, BWLKNTRR, MCLKNTRR & CRLKNTRR

August 28, 2018

Mackenzie Valley Land and Water Board
PO Box 2130
Yellowknife, NT
X1A 2P6

Sent via email: elaine@mvlwb.com

Dear Elaine Briere,

RE: Land Use Permit (Previous Permit # MV2006L0015)

Please accept this letter as Northwestel Inc.'s request to extend permit MV2013L0015 for a further two years. We are still operating the communications at these four sites.

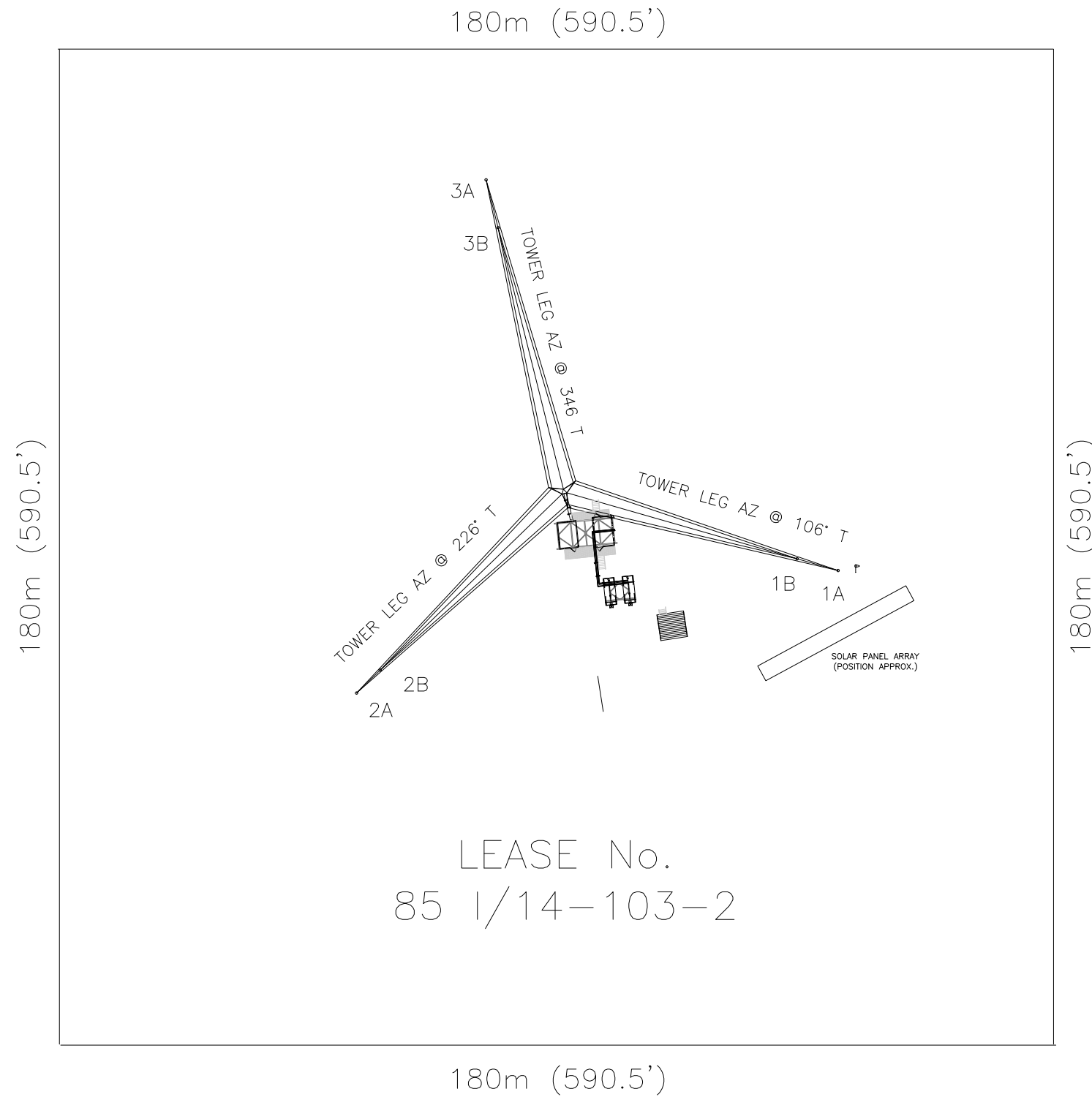
I have included you on all my engagement letters to the various stakeholders. I will continue to include, if not included already, for any further correspondence in the engagement process.

I've enclosed a fresh copy of a site plan for each of the four communication sites as well as a map showing the locations.

Kind regards,

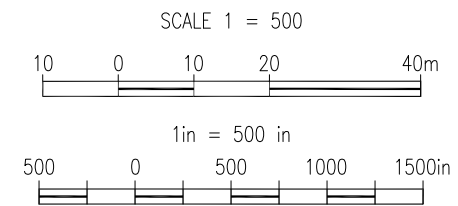


Shannon Gibson
Property Management Assistant
sgibson@nwtel.ca
Enc.



LEASE No.
85 1/14-103-2

180m (590.5')



SCALE NOTE: THIS DRAWING IS 1/2 SIZE WHEN PRINTED ON 11" x 17" PAPER. DOUBLE ALL MEASURED DISTANCES.



NOTES

TOWER LOCATION

LATITUDE: 63° 25' 56.90" N
 LONGITUDE: 112° 37' 43.80" W
 NORTHING: 7034808.86 N
 EASTING: 418724.89 E
 UTM ZONE: 12
 NTS MAP SHEET: 85 P/7
 DATUM: WGS84/NAD83

10				
9				
8				
7				
6				
5	2015.06.23	ADDED SOLAR PANEL ARRAY	GC	BS
4	2014.06.16	CORRECTED TOWER LAYOUT/GEO-REF TO NAD83	GC	
3	2009.02.06	ADDED EQUIPMENT TO POWER BUILDING	SH	EHZ
2	2007.11.26	UPDATES FROM ITB INC.	SH	SS
1	2006.09.26	INITIAL ISSUE	SH	SS
No.	DATE:	REVISION	BY	CHK/APPD

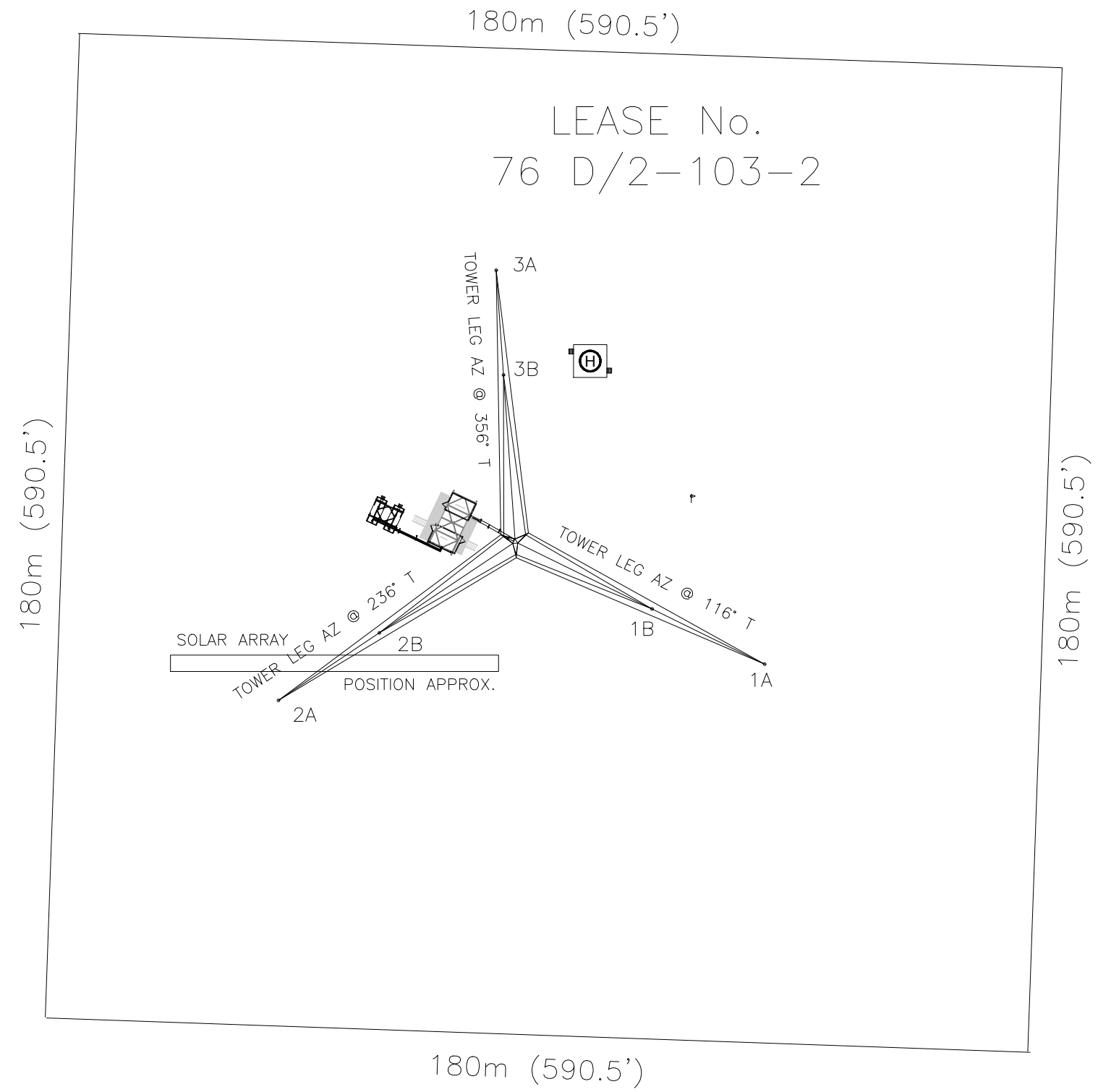


SCALE: 1:500 DRWN: S. HANSEN DATE: AUG 26, 2006

COMMON PLANT
 SITE PLAN
 LOT LAYOUT
 BROWN LAKE, NT

DRAWING NUMBER				REV
REGION	LOCATION	CENTRE	DRAWING No.	
NT	BWLK RR	X70001-01		5

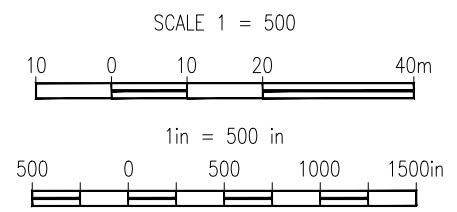
THIS DOCUMENT AND THE INFORMATION DISCLOSED HEREIN IS PROPRIETARY TO NORTHWESTEL INC. AND UNLESS OTHERWISE SPECIFIED UNDER WRITTEN AGREEMENT MAY NEITHER BE REPRODUCED OR COPIED IN WHOLE OR IN PART OR DISCLOSED TO OTHERS NOR EMPLOYED FOR DESIGN, PROCUREMENT, OR MANUFACTURING PURPOSES WITHOUT THE WRITTEN PERMISSION OF NORTHWESTEL INC.



NOTES

TOWER LOCATION
 LATITUDE: 64° 14' 32.5" N
 LONGITUDE: 110° 56' 45.30" W
 NORTHING: 7124022.70 N
 EASTING: 502622.40 E
 UTM ZONE: 12
 NTS MAP SHEET: 76 D/2
 DATUM: WGS84/NAD83

10				
9				
8				
7	2018.07.16	ADDED HELI-PAD	GC	EB
6	2017.12.04	ADDED GROUNDING	GC	
5	2014.06.17	UPDATE TO NEW STANDARDS/UPDATE TOWER INFO	GC	
4	2009.07.14	UPDATE FIELD INFO (Spec# BWLNTRR 650-09)	HDS	CW
3	2009.02.06	ADDED EQUIPMENT TO POWER BUILDING	SH	EHZ
2	2007.11.30	UPDATED AS PER ITB DRAWINGS	SH	SS
1	2006.09.27	INITIAL ISSUE	SH	SS
No.	DATE:	REVISION	BY	CHK/APPD



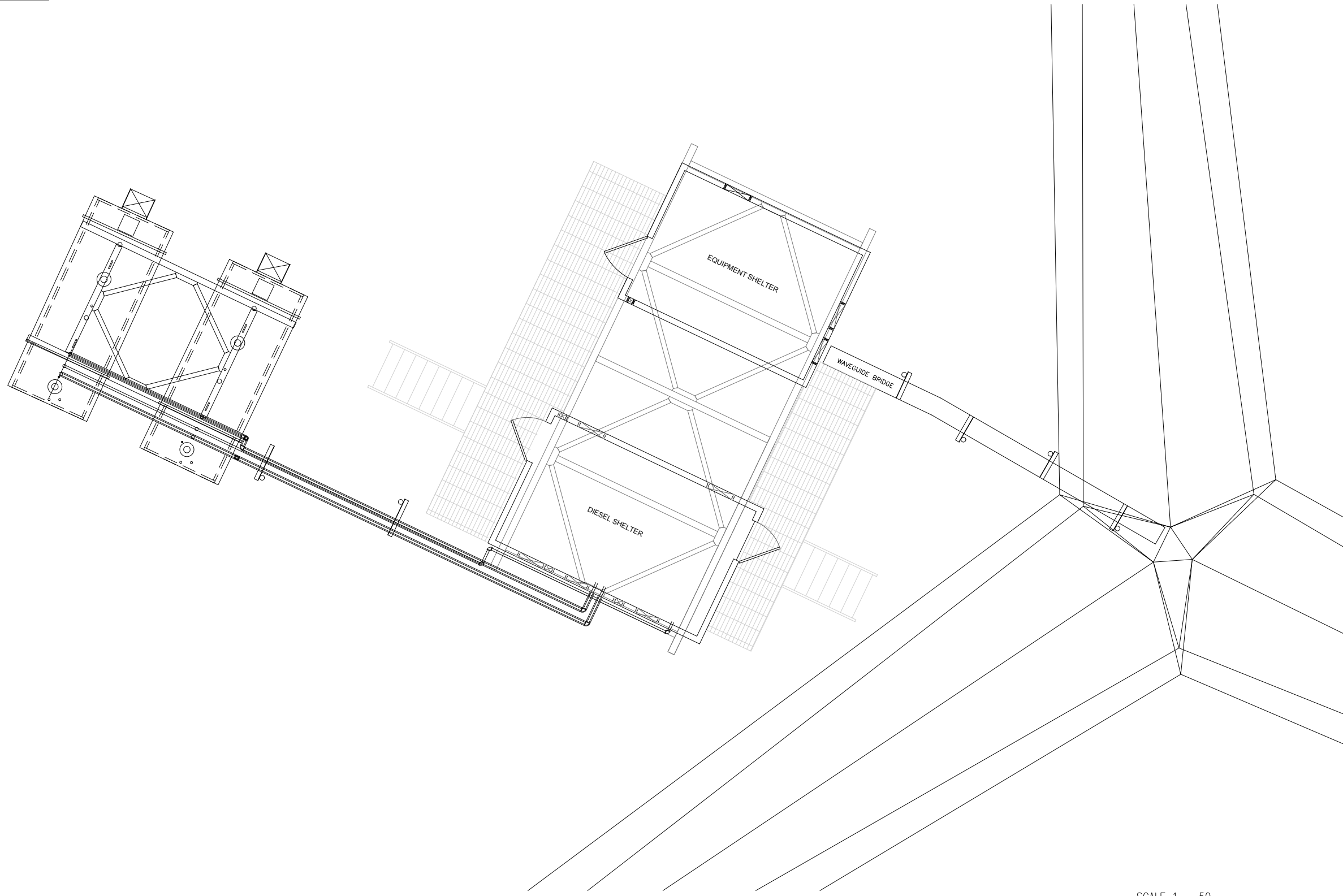
SCALE NOTE: THIS DRAWING IS 1/2 SIZE WHEN PRINTED ON 11" x 17" PAPER. DOUBLE ALL MEASURED DISTANCES.

THIS DOCUMENT AND THE INFORMATION DISCLOSED HEREIN IS PROPRIETARY TO NORTHWESTEL INC. AND UNLESS OTHERWISE SPECIFIED UNDER WRITTEN AGREEMENT MAY NEITHER BE REPRODUCED OR COPIED IN WHOLE OR IN PART OR DISCLOSED TO OTHERS NOR EMPLOYED FOR DESIGN, PROCUREMENT, OR MANUFACTURING PURPOSES WITHOUT THE WRITTEN PERMISSION OF NORTHWESTEL INC.

SCALE: 1:500 | DRWN: S.HANSEN | DATE: SEPT 27, 2006

**COMMON PLANT
SITE PLAN
LOT LAYOUT
COURAGEOUS LAKE, NT**

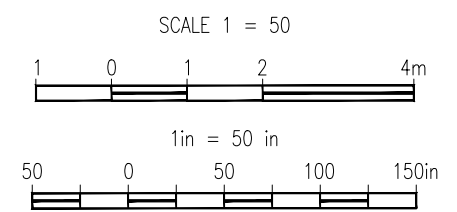
DRAWING NUMBER				REV
REGION	LOCATION	CENTRE	DRAWING No.	
NT	CRLK RR	X70001-01		7



NOTES

TOWER LOCATION
 LATITUDE: 64° 14' 32.5" N
 LONGITUDE: 110° 56' 45.30" W
 NORTHING: 7124022.70 N
 EASTING: 502622.40 E
 UTM ZONE: 12
 NTS MAP SHEET: 76 D/2
 DATUM: WGS84/NAD83

10				
9				
8				
7	2018.07.16	ADDED HELI-PAD	GC	EB
6	2017.12.04	ADDED GROUNDING	GC	
5	2014.06.17	UPDATE TO NEW STANDARDS/UPDATE TOWER INFO	GC	
4	2009.07.14	UPDATE FIELD INFO (Spec# BWLNTRR 650-09)	HDS	CW
3	2009.02.06	ADDED EQUIPMENT TO POWER BUILDING	SH	EHZ
2	2007.11.30	UPDATED AS PER ITB DRAWINGS	SH	SS
1	2006.09.27	INITIAL ISSUE	SH	SS
No.	DATE:	REVISION	BY	CHK/APPD



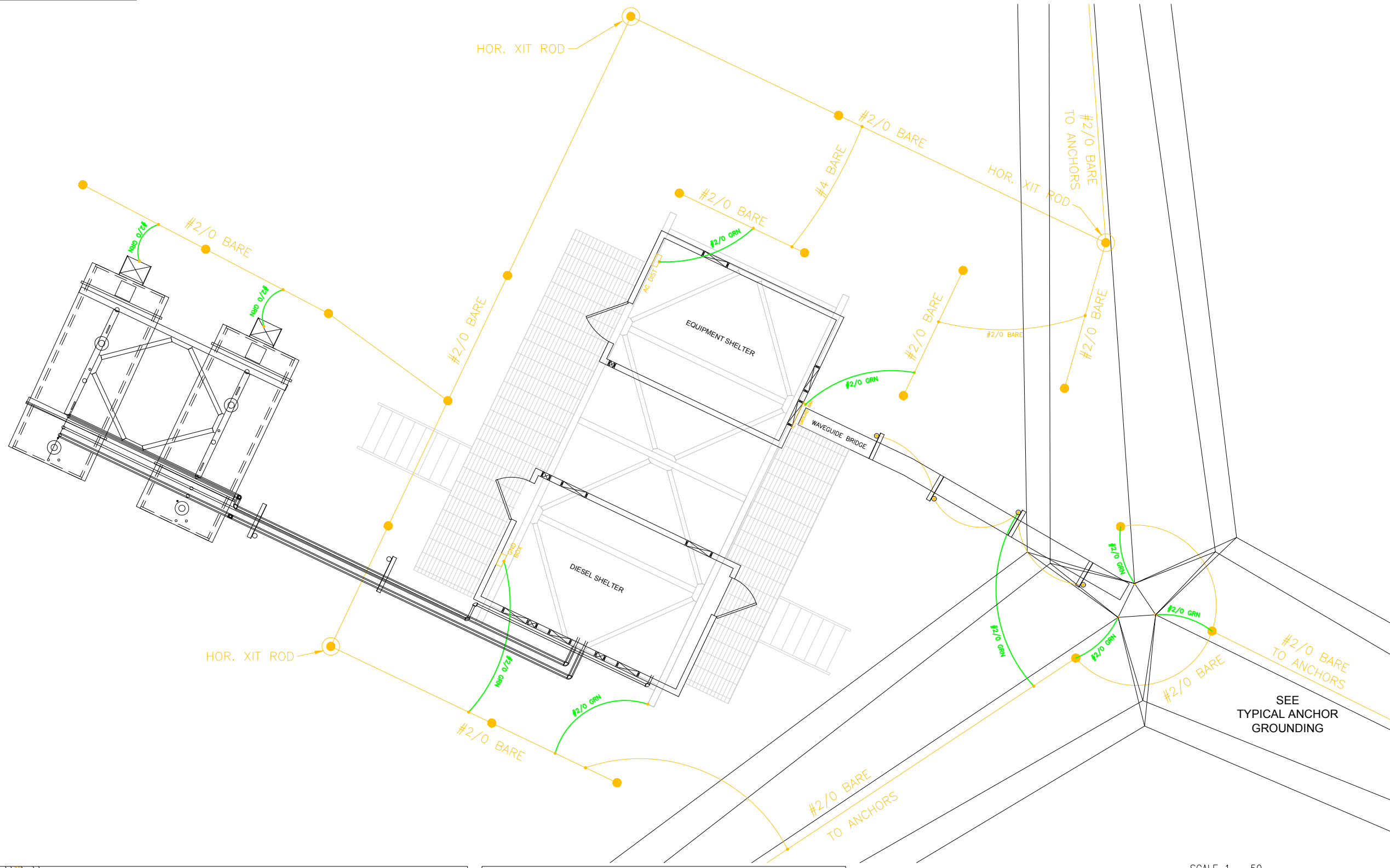
SCALE NOTE: THIS DRAWING IS 1/2 SIZE WHEN PRINTED ON 11" x 17" PAPER. DOUBLE ALL MEASURED DISTANCES.

THIS DOCUMENT AND THE INFORMATION DISCLOSED HEREIN IS PROPRIETARY TO NORTHWESTEL INC. AND UNLESS OTHERWISE SPECIFIED UNDER WRITTEN AGREEMENT MAY NEITHER BE REPRODUCED OR COPIED IN WHOLE OR IN PART OR DISCLOSED TO OTHERS NOR EMPLOYED FOR DESIGN, PROCUREMENT, OR MANUFACTURING PURPOSES WITHOUT THE WRITTEN PERMISSION OF NORTHWESTEL INC.

SCALE: 1:50 | DRWN: S.HANSEN | DATE: SEPT 27, 2006

**COMMON PLANT
 SITE PLAN
 BUILDING LAYOUT
 COURAGEOUS LAKE, NT**

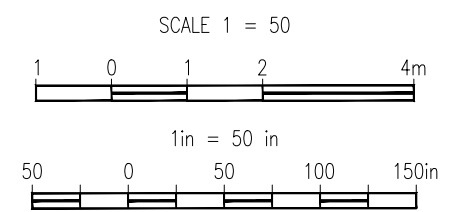
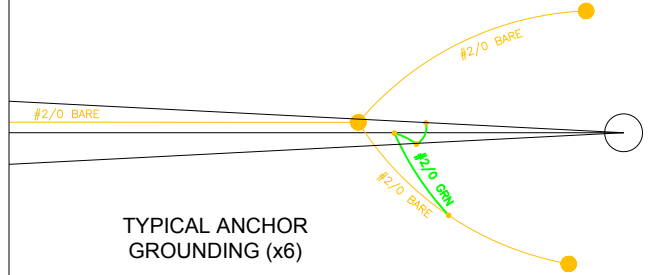
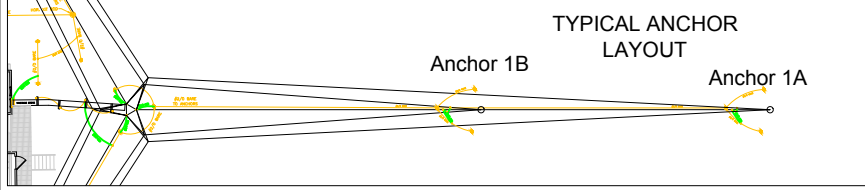
DRAWING NUMBER				REV
REGION	LOCATION	CENTRE	DRAWING No.	
NT	CRLK RR	X7001-02		7



NOTES

TOWER LOCATION
 LATITUDE: 64° 14' 32.5" N
 LONGITUDE: 110° 56' 45.30" W
 NORTHING: 7124022.70 N
 EASTING: 502622.40 E
 UTM ZONE: 12
 NTS MAP SHEET: 76 D/2
 DATUM: WGS84/NAD83
 GROUNDING ADDED FROM PROPOSED LAYOUT.
 NO AS BUILT PROVIDED. GC-04/12/17

10				
9				
8				
7	2018.07.16	ADDED HELI-PAD	GC	EB
6	2017.12.04	ADDED GROUNDING	GC	
5	2014.06.17	UPDATE TO NEW STANDARDS/UPDATE TOWER INFO	GC	
4	2009.07.14	UPDATE FIELD INFO (Spec# BWLKNTRR 650-09)	HDS	CW
3	2009.02.06	ADDED EQUIPMENT TO POWER BUILDING	SH	EHZ
2	2007.11.30	UPDATED AS PER ITB DRAWINGS	SH	SS
1	2006.09.27	INITIAL ISSUE	SH	SS
No.	DATE:	REVISION	BY	CHK/APPD



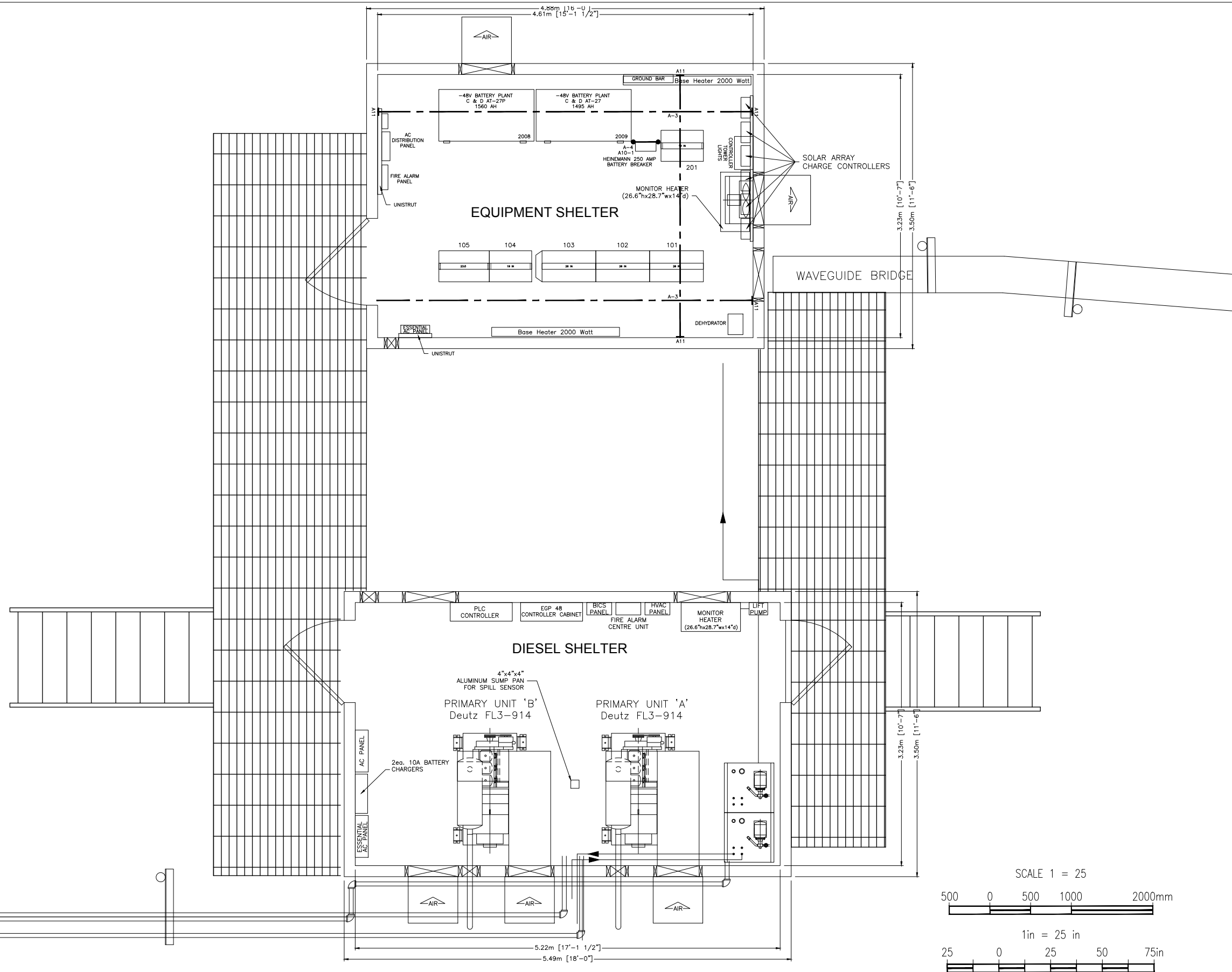
SCALE NOTE: THIS DRAWING IS 1/2 SIZE WHEN PRINTED ON 11" x 17" PAPER. DOUBLE ALL MEASURED DISTANCES.

THIS DOCUMENT AND THE INFORMATION DISCLOSED HEREIN IS PROPRIETARY TO NORTHWESTEL INC. AND UNLESS OTHERWISE SPECIFIED UNDER WRITTEN AGREEMENT MAY NEITHER BE REPRODUCED OR COPIED IN WHOLE OR IN PART OR DISCLOSED TO OTHERS NOR EMPLOYED FOR DESIGN, PROCUREMENT, OR MANUFACTURING PURPOSES WITHOUT THE WRITTEN PERMISSION OF NORTHWESTEL INC.

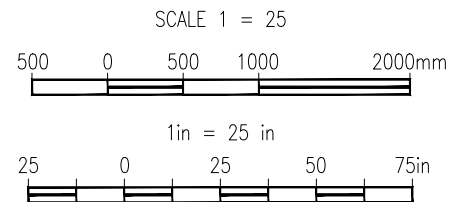
Northwestel
 SCALE: 1:50 | DRWN: G. COOPER | DATE: APRIL 15, 2014

**COMMON PLANT
 SITE PLAN
 GROUNDING LAYOUT
 COURAGEOUS LAKE, NT**

DRAWING NUMBER				REV
REGION	LOCATION	CENTRE	DRAWING No.	
NT CRLK RR P78001-01				7



10				
9				
8				
7				
6	2015.01.12	ADDED SOLAR ARRAY CHARGE CONTROLLERS	GC BS	
5	2009.07.09	UPDATED FIELD INFO (Spec# CRLKNTRR 650-09)	HDS CW	
4	2009.02.06	ADDED NEW EQUIPMENT IN POWER BUILDING	SH EHZ	
3	2009.01.23	EQUIP. BLDG UPDATE W/ NEW BATTERIES AND INVERTER (B105)	SH EHZ	
2	2007.11.30	UPDATED AS PER ITB DRAWINGS	SH SS	
1	2006.09.27	INITIAL ISSUE	SH SS	
No.	DATE:	REVISION	BY	CHK/APPD



SCALE NOTE: THIS DRAWING IS 1/2 SIZE WHEN PRINTED ON 11" x 17" PAPER. DOUBLE ALL MEASURED DISTANCES.

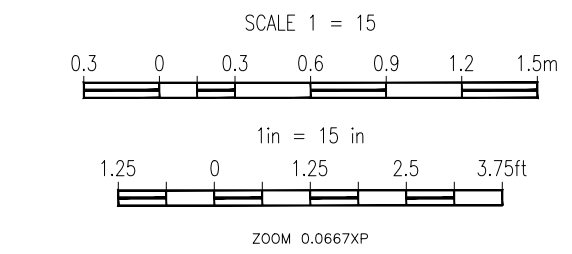
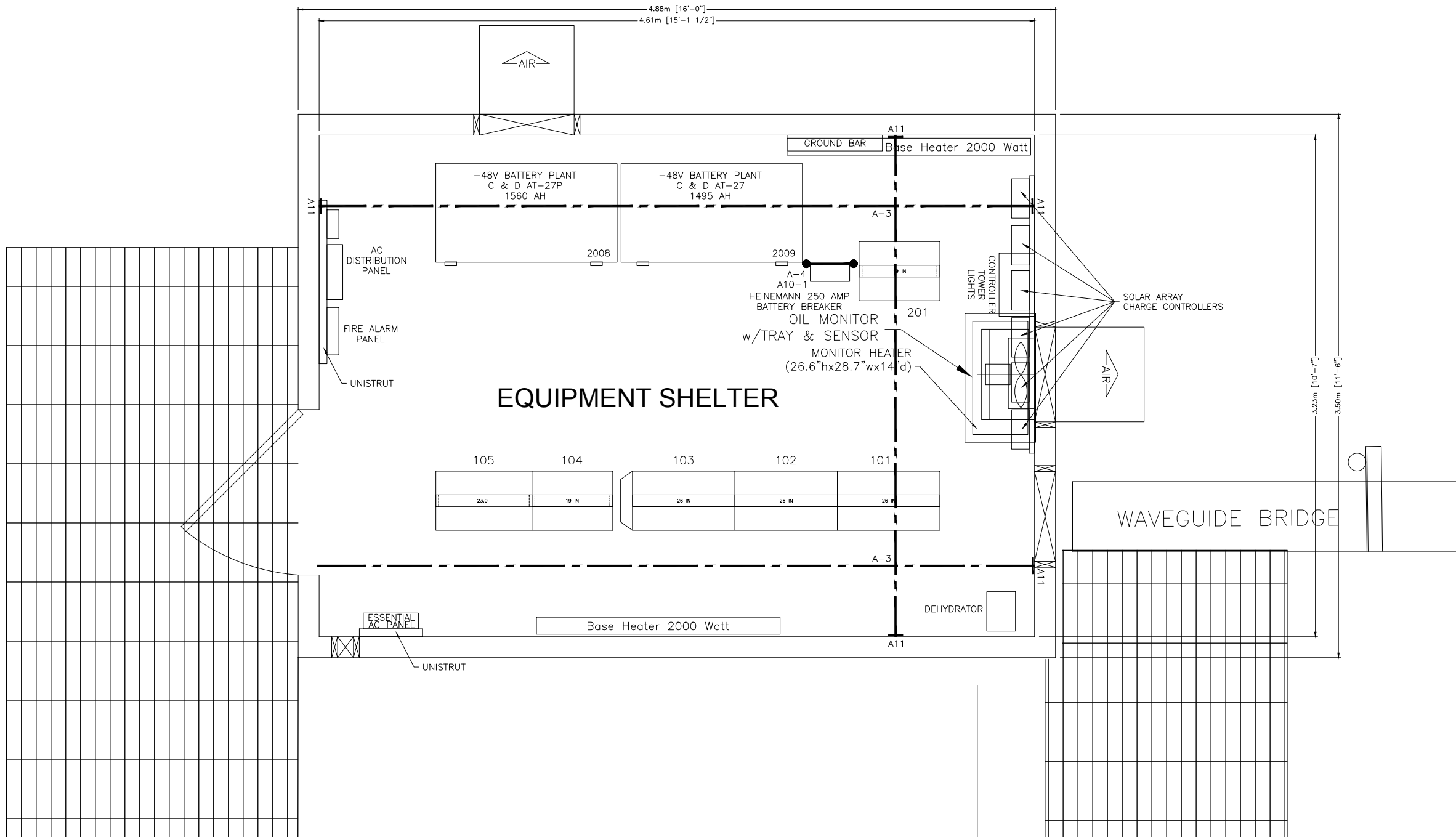
THIS DOCUMENT AND THE INFORMATION DISCLOSED HEREIN IS PROPRIETARY TO NORTHWESTEL INC. AND UNLESS OTHERWISE SPECIFIED UNDER WRITTEN AGREEMENT MAY NEITHER BE REPRODUCED OR COPIED IN WHOLE OR IN PART OR DISCLOSED TO OTHERS NOR EMPLOYED FOR DESIGN, PROCUREMENT, OR MANUFACTURING PURPOSES WITHOUT THE WRITTEN PERMISSION OF NORTHWESTEL INC.

NorthwesTel

SCALE: 1:25 | DRWN: S HANSEN | DATE: SEP 27, 2006

**COMMON PLANT
RADIO and POWER BUILDING
BUILDING LAYOUT
COURAGEOUS LAKE, NWT**

DRAWING NUMBER				REV
REGION	LOCATION	CENTRE	DRAWING No.	
NT CRLK RR B84001-01				6



NOTES

203		
202		
201	ARGUS RSM48/50 DIST BAY	
200	ASSIGNMENT NO:	SPEC
105	PHILTER 5 KVA INVERTER	
104	MUX/SUPVRY	
103	OC-3 RADIO	
102	OC-3 RADIO	
101	OC-3 RADIO	
100	ASSIGNMENT NO:	SPEC

10			
9			
8			
7			
6	2015.01.12	ADDED SOLAR ARRAY CHARGE CONTROLLERS	GC BS
5	2009.07.09	UPDATED FIELD INFO (Spec# CRLKNTRR 650-09)	HDS CW
4	2009.02.06	ADDED NEW EQUIPMENT IN POWER BUILDING	SH EHZ
3	2009.01.23	EQUIP. BLDG UPDATE W/ NEW BATTERIES AND INVERTER (B105)	SH EHZ
2	2007.11.30	UPDATED AS PER ITB DRAWINGS	SH SS
1	2006.09.27	INITIAL ISSUE	SH SS
No.	DATE:	REVISION	BY CHK/APPD



SCALE: 1:15 DRWN: S HANSEN DATE: SEP 27, 2006

**COMMON PLANT
RADIO BUILDING
FLOOR PLAN
COURAGEOUS LAKE, NWT**

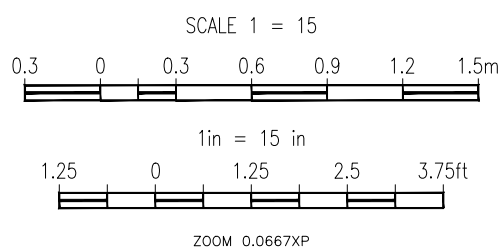
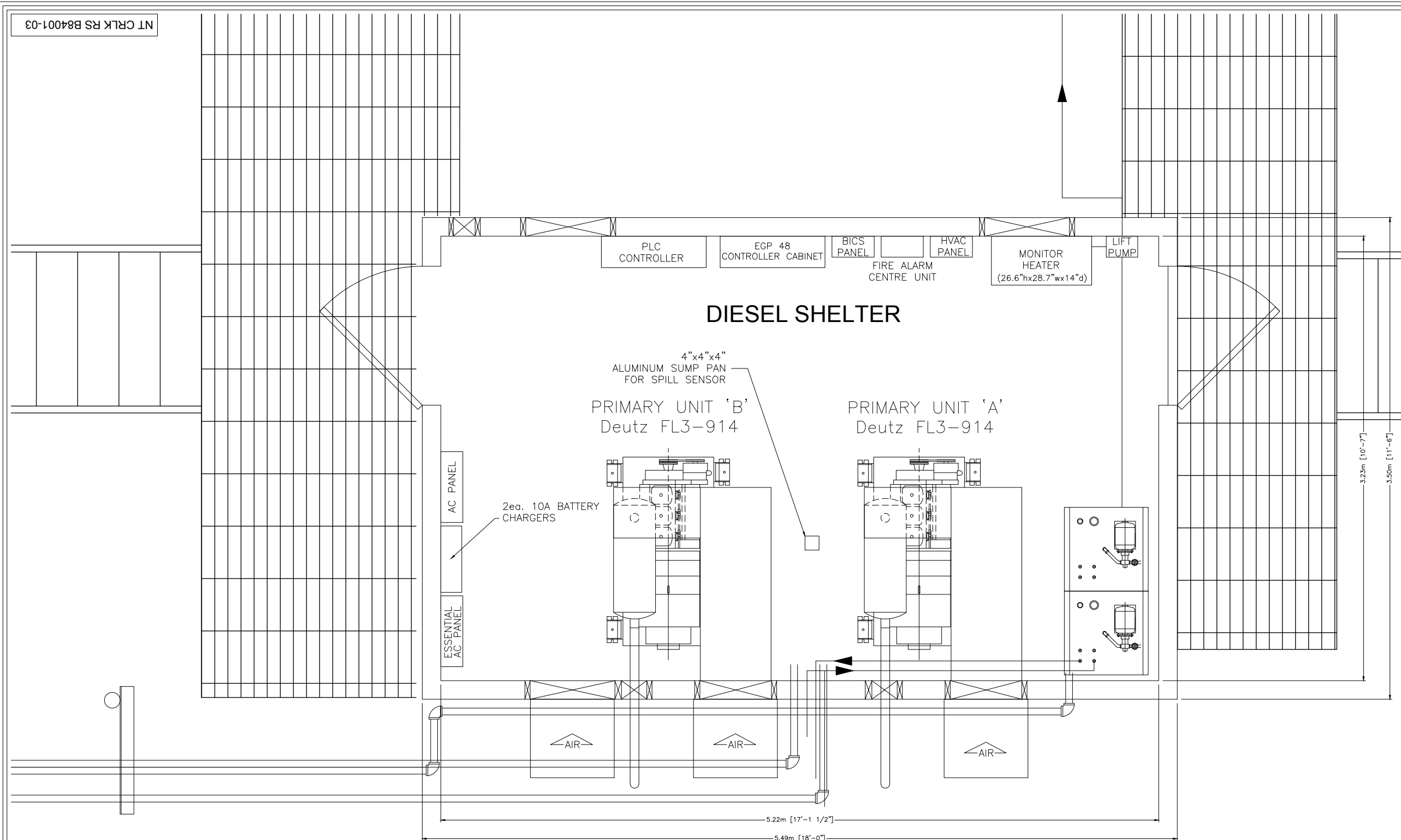
DRAWING NUMBER				REV
REGION	LOCATION	CENTRE	DRAWING No.	
NT CRLK RR B84001-02				6

THIS DOCUMENT AND THE INFORMATION DISCLOSED HEREIN IS PROPRIETARY TO NORTHWESTEL INC. AND UNLESS OTHERWISE SPECIFIED UNDER WRITTEN AGREEMENT MAY NEITHER BE REPRODUCED OR COPIED IN WHOLE OR IN PART OR DISCLOSED TO OTHERS NOR EMPLOYED FOR DESIGN, PROCUREMENT, OR MANUFACTURING PURPOSES WITHOUT THE WRITTEN PERMISSION OF NORTHWESTEL INC.

SCALE NOTE: THIS DRAWING IS 1/2 SIZE WHEN PRINTED ON 11" x 17" PAPER. DOUBLE ALL MEASURED DISTANCES.

NT CRLK RS B84001-03

NOTES



10				
9				
8				
7				
6	2015.01.12	ADDED SOLAR ARRAY CHARGE CONTROLLERS	GC BS	
5	2009.07.09	UPDATED FIELD INFO (Spec# CRLKNTRR 650-09)	HDS CW	
4	2009.02.06	ADDED NEW EQUIPMENT IN POWER BUILDING	SH EHZ	
3	2009.01.23	EQUIP. BLDG UPDATE W/ NEW BATTERIES AND INVERTER (B105)	SH EHZ	
2	2007.11.30	UPDATED AS PER ITB DRAWINGS	SH SS	
1	2006.09.27	INITIAL ISSUE	SH SS	
No.	DATE:	REVISION	BY	CHK/APPD



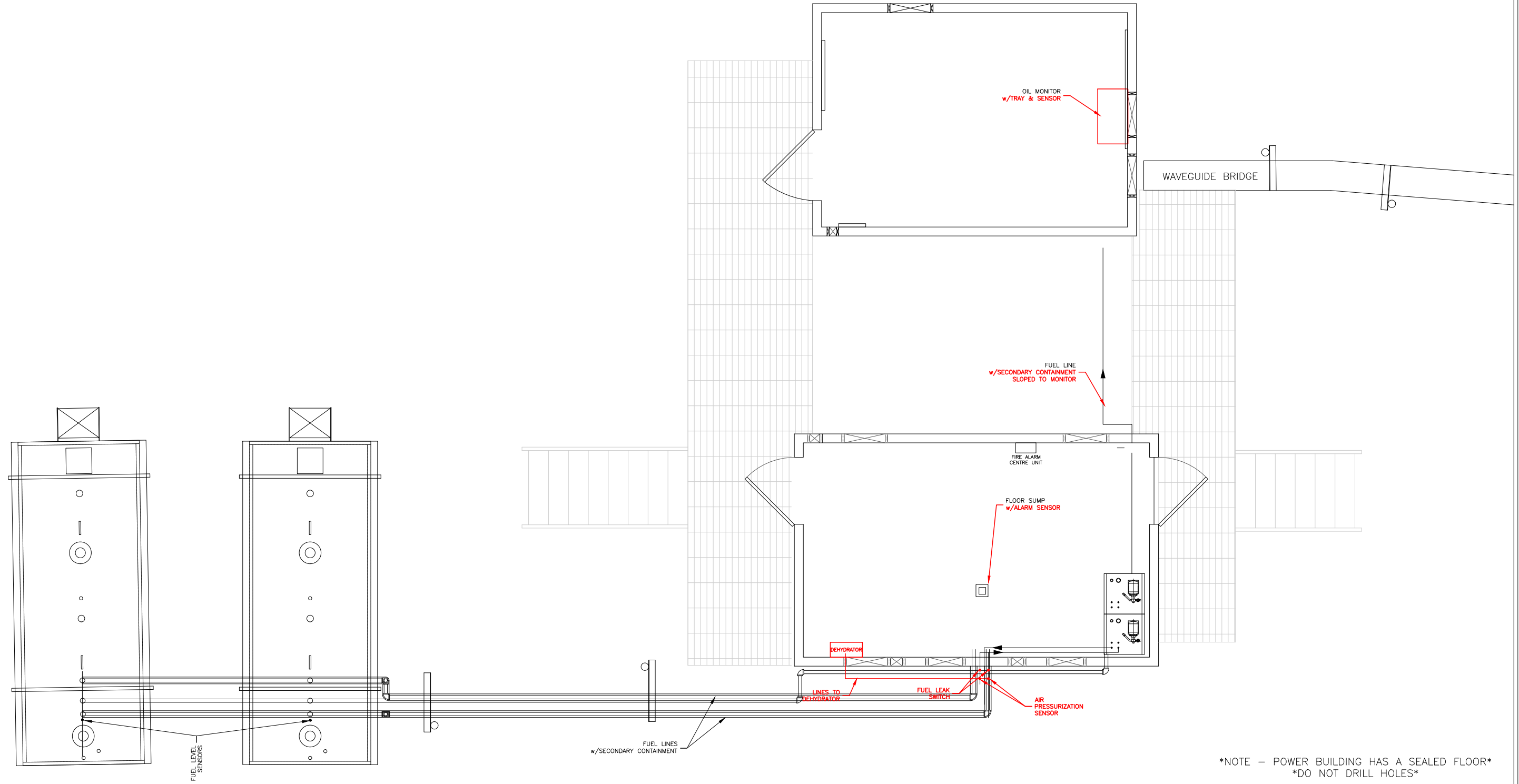
SCALE: 1:15 DRWN: S HANSEN DATE: 2006.09.27

**COMMON PLANT
POWER BUILDING
FLOOR PLAN
COURAGEOUS LAKE, NWT**

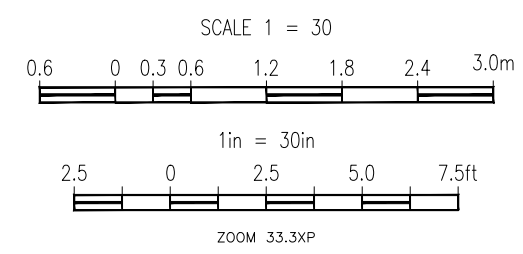
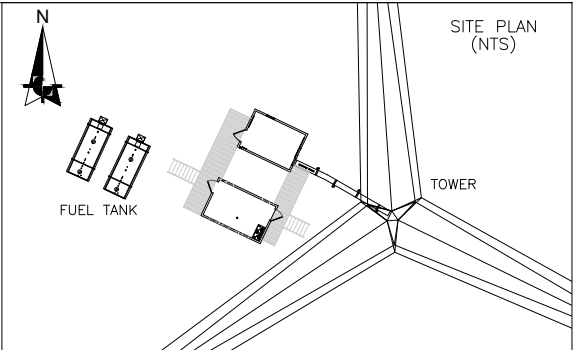
DRAWING NUMBER				REV
REGION	LOCATION	CENTRE	DRAWING No.	
NT	CRLK	RS	B84001-03	6

THIS DOCUMENT AND THE INFORMATION DISCLOSED HEREIN IS PROPRIETARY TO NORTHWESTEL INC. AND UNLESS OTHERWISE SPECIFIED UNDER WRITTEN AGREEMENT MAY NEITHER BE REPRODUCED OR COPIED IN WHOLE OR IN PART OR DISCLOSED TO OTHERS NOR EMPLOYED FOR DESIGN, PROCUREMENT, OR MANUFACTURING PURPOSES WITHOUT THE WRITTEN PERMISSION OF NORTHWESTEL INC.

SCALE NOTE: THIS DRAWING IS 1/2 SIZE WHEN PRINTED ON 11" x 17" PAPER. DOUBLE ALL MEASURED DISTANCES.



THIS DOCUMENT AND THE INFORMATION DISCLOSED HEREIN IS PROPRIETARY TO NORTHWESTEL INC. AND UNLESS OTHERWISE SPECIFIED UNDER WRITTEN AGREEMENT MAY NEITHER BE REPRODUCED OR COPIED IN WHOLE OR IN PART OR DISCLOSED TO OTHERS NOR EMPLOYED FOR DESIGN, PROCUREMENT, OR MANUFACTURING PURPOSES WITHOUT THE WRITTEN PERMISSION OF NORTHWESTEL INC.



SCALE NOTE: THIS DRAWING IS 1/2 SIZE WHEN PRINTED ON 11" x 17" PAPER. DOUBLE ALL MEASURED DISTANCES.

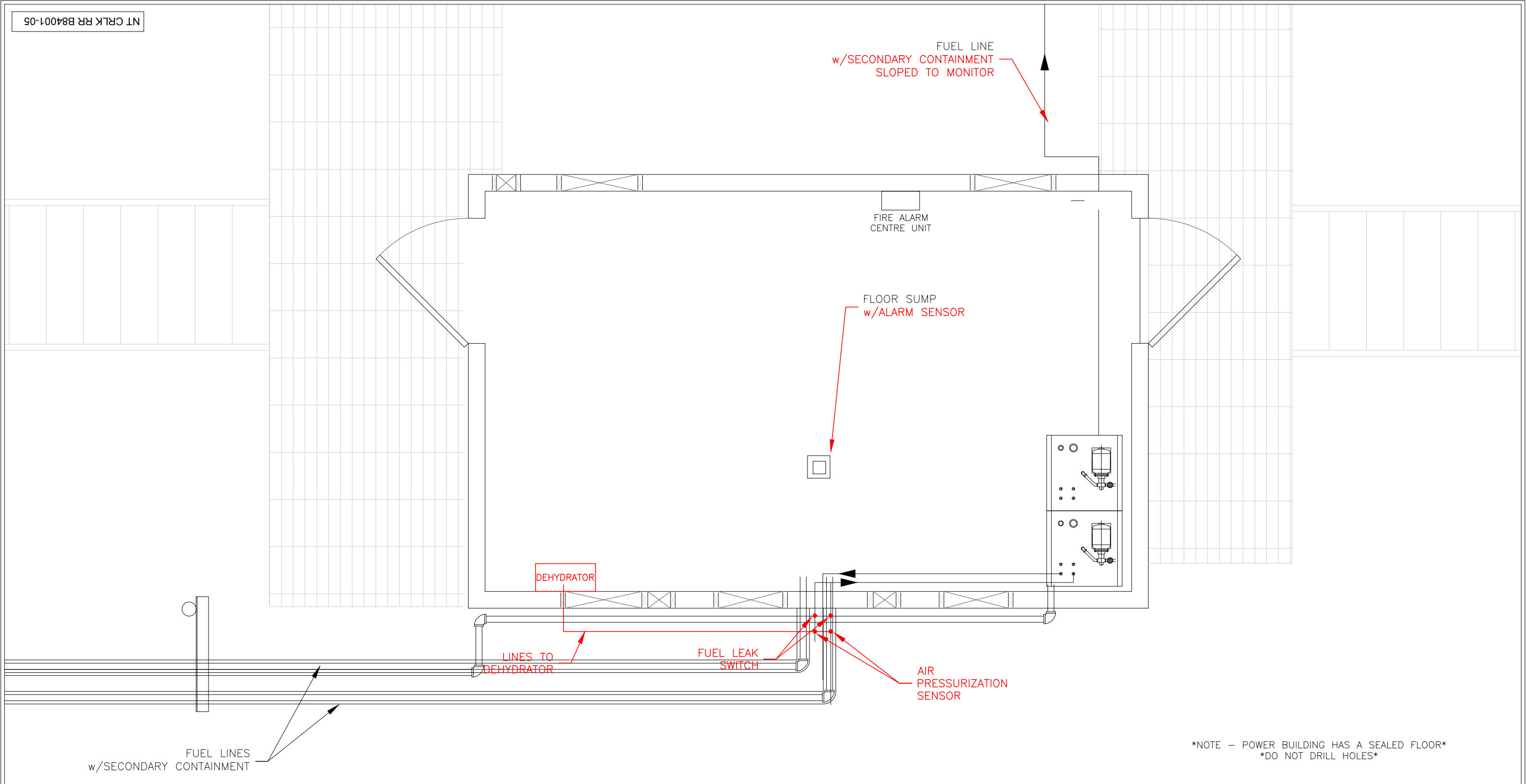
10					
9					
8					
7					
6					
5					
4					
3					
2					
1	2012.04.02	INITIAL ISSUE	GC	JY	
No.	DATE:	REVISION	BY	CHK	APPD

Northwestel

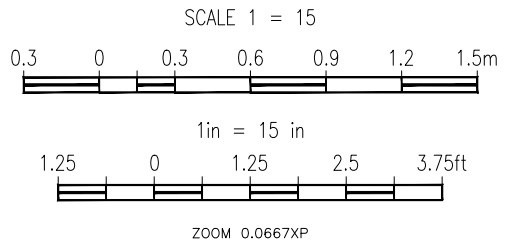
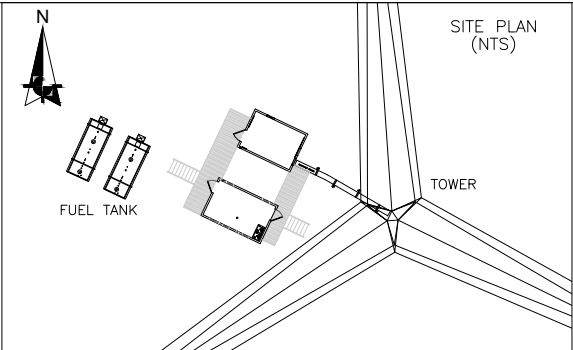
SCALE: 1:30 | DRWN: G. COOPER | DATE: APRIL 2, 2012

**COMMON PLANT
FUEL CONTAINMENT
EQUIPMENT LAYOUT
COURAGEOUS LAKE, NT**

DRAWING NUMBER				REV
REGION	LOCATION	CENTRE	DRAWING No.	
NT CRLK RR B84001-04				1



NOTE - POWER BUILDING HAS A SEALED FLOOR
DO NOT DRILL HOLES



SCALE NOTE: THIS DRAWING IS 1/2 SIZE WHEN PRINTED ON 11" x 17" PAPER. DOUBLE ALL MEASURED DISTANCES.

10					
9					
8					
7					
6					
5					
4					
3					
2					
1	2012.04.02	INITIAL ISSUE	GC	JY	
No.	DATE:	REVISION	BY	CHK	APPD

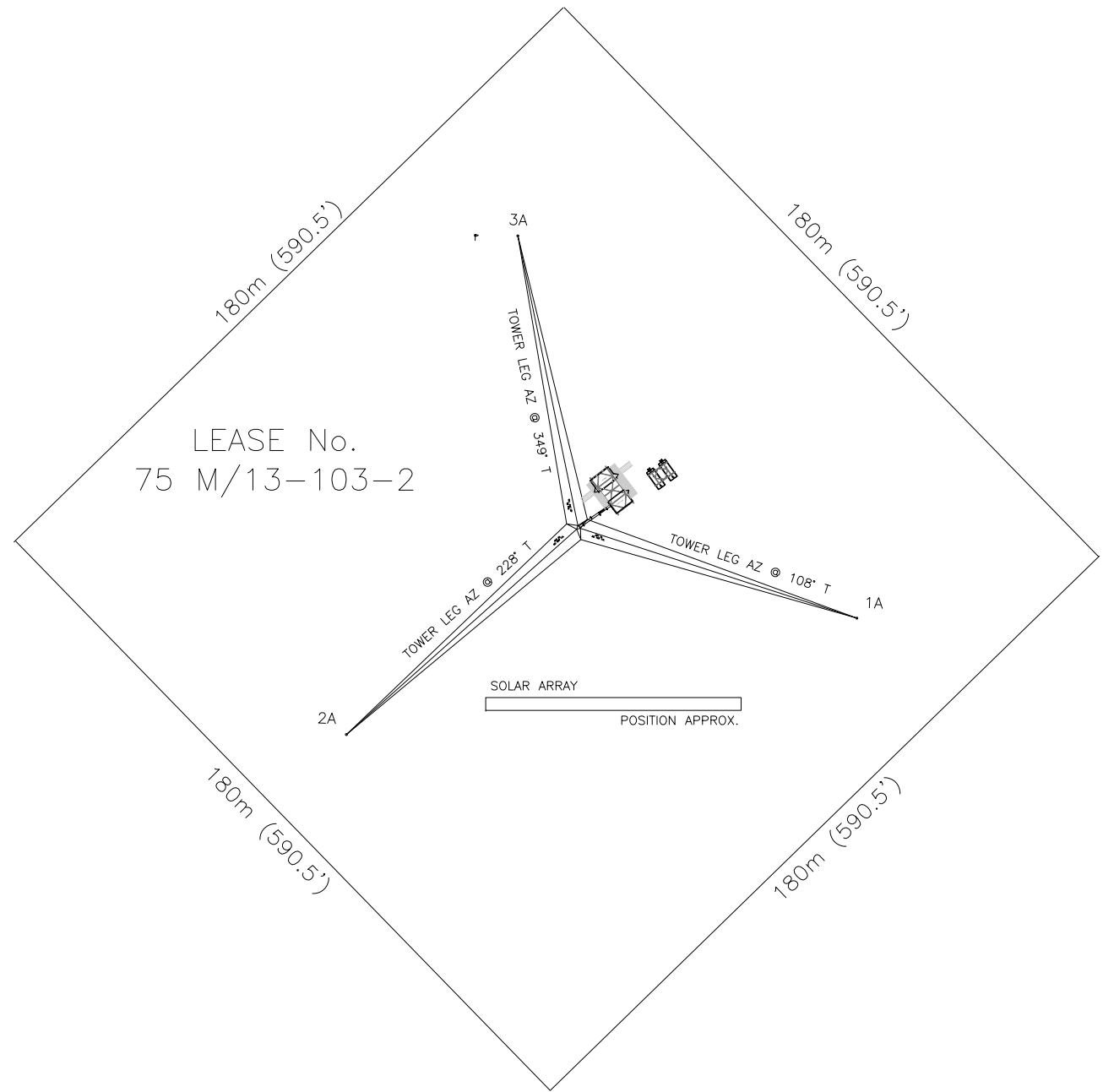


SCALE: 1:15 | DRWN: G. COOPER | DATE: APRIL 2, 2012

**COMMON PLANT
FUEL CONTAINMENT
EQUIPMENT LAYOUT
COURAGEOUS LAKE, NT**

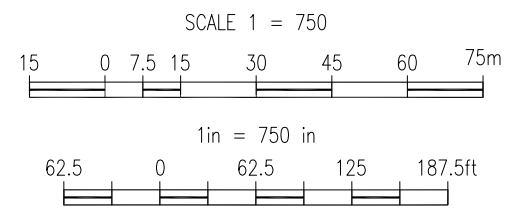
DRAWING NUMBER				REV
REGION	LOCATION	CENTRE	DRAWING No.	
NT	CRLK RR	B84001-05		1

THIS DOCUMENT AND THE INFORMATION DISCLOSED HEREIN IS PROPRIETARY TO NORTHWESTEL INC. AND UNLESS OTHERWISE SPECIFIED UNDER WRITTEN AGREEMENT MAY NEITHER BE REPRODUCED OR COPIED IN WHOLE OR IN PART OR DISCLOSED TO OTHERS NOR EMPLOYED FOR DESIGN, PROCUREMENT, OR MANUFACTURING PURPOSES WITHOUT THE WRITTEN PERMISSION OF NORTHWESTEL INC.



LEASE No.
75 M/13-103-2

SOLAR ARRAY
POSITION APPROX.



SCALE NOTE: THIS DRAWING IS 1/2 SIZE WHEN PRINTED ON 11" x 17" PAPER. DOUBLE ALL MEASURED DISTANCES.



NOTES

TOWER LOCATION
 LATITUDE: 63° 47' 28.30" N
 LONGITUDE: 111° 52' 26.00" W
 NORTHING: 7074041.36 N
 EASTING: 456938.54 E
 UTM ZONE: 12
 NTS MAP SHEET: 75 M/13
 DATUM: WGS84/NAD83

10				
9				
8	2017.01.31	UPDATE GROUNDING (N.A.P.)	GC	MH
7	2015.06.23	ADDED SOLAR PANEL ARRAY (N.A.P.)	GC	BS
6	2014.06.12	UPDATE SITE FROM SITE SURVEY	GC	
5	2013.11.21	UPDATE STANDARDS/GEO-REF NAD83/FIX BLDG ORIENTATION	GC	
4	2009.07.14	UPDATE FIELD INFO (Spec# BWLKNTRR 650-09)	HDS	CW
3	2009.02.06	ADDED EQUIPMENT TO POWER BUILDING	SH	EHZ
2	2007.11.27	UPDATED FROM ITB DRAWINGS	SH	SS
1	2006.09.27	INITIAL ISSUE	SH	SS
No.	DATE:	REVISION	BY	CHK/APPD

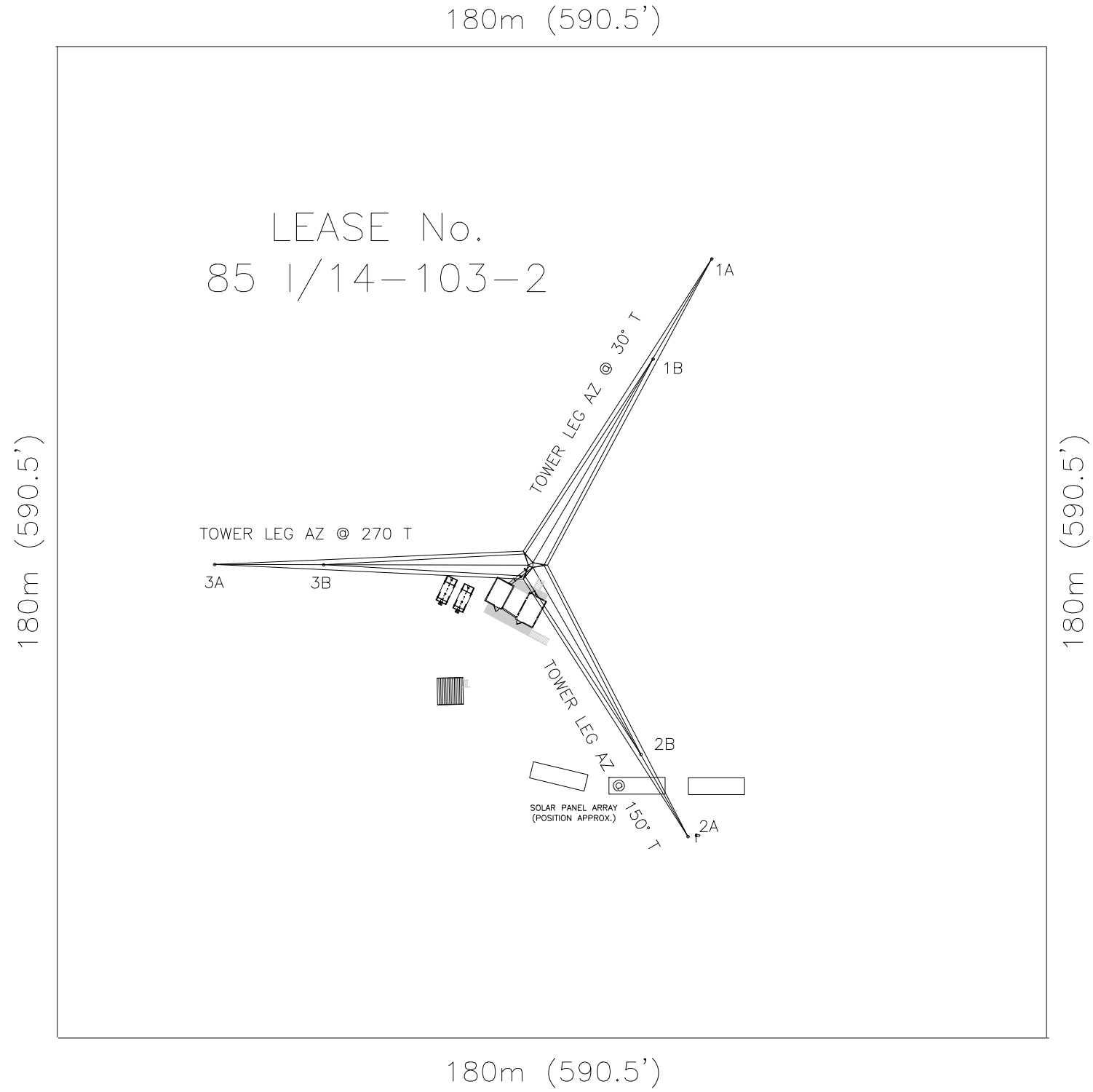


SCALE: 1:750 DRWN: G. COOPER DATE: NOV 21, 2013

**COMMON PLANT
SITE PLAN
LOT LAYOUT
MACKAY LAKE, NT**

DRAWING NUMBER				REV
REGION	LOCATION	CENTRE	DRAWING No.	
NT MCLK RR X7001-01				8

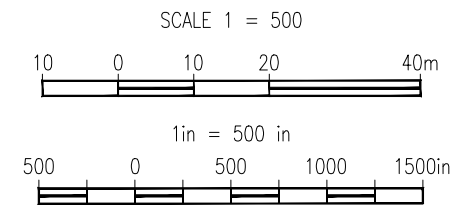
THIS DOCUMENT AND THE INFORMATION DISCLOSED HEREIN IS PROPRIETARY TO NORTHWESTEL INC. AND UNLESS OTHERWISE SPECIFIED UNDER WRITTEN AGREEMENT MAY NEITHER BE REPRODUCED OR COPIED IN WHOLE OR IN PART OR DISCLOSED TO OTHERS NOR EMPLOYED FOR DESIGN, PROCUREMENT, OR MANUFACTURING PURPOSES WITHOUT THE WRITTEN PERMISSION OF NORTHWESTEL INC.



NOTES

TOWER LOCATION
 LATITUDE: 62° 53' 39.60" N
 LONGITUDE: 113° 01' 32.40" W
 NORTHING: 6975436.68 N
 EASTING: 397036.66 E
 UTM ZONE: 12
 NTS MAP SHEET: 85 1/14
 DATUM: WGS84/NAD83

10				
9				
8				
7	2017.01.31	UPDATE GROUNDING (N.A.P.)	GC	MH
6	2015.06.23	ADDED SOLAR PANEL ARRAY (N.A.P.)	GC	BS
5	2014.06.12	CORRECT SITE & TOWER ALIGNMENT FROM SITE SURVEY	GC	
4	2009.07.14	UPDATED FIELD INFO	HDS	CW
3	2009.02.06	ADDED EQUIPMENT TO POWER BUILDING	SH	EHZ
2	2007.11.27	UPDATED FROM ITB DRAWINGS	SH	SS
1	2006.09.27	INITIAL ISSUE	SH	SS
No.	DATE:	REVISION	BY	CHK/APPR



SCALE NOTE: THIS DRAWING IS 1/2 SIZE WHEN PRINTED ON 11" x 17" PAPER. DOUBLE ALL MEASURED DISTANCES.

THIS DOCUMENT AND THE INFORMATION DISCLOSED HEREIN IS PROPRIETARY TO NORTHWESTEL INC. AND UNLESS OTHERWISE SPECIFIED UNDER WRITTEN AGREEMENT MAY NEITHER BE REPRODUCED OR COPIED IN WHOLE OR IN PART OR DISCLOSED TO OTHERS NOR EMPLOYED FOR DESIGN, PROCUREMENT, OR MANUFACTURING PURPOSES WITHOUT THE WRITTEN PERMISSION OF NORTHWESTEL INC.

SCALE: 1:500 | DRWN: S. HANSEN | DATE: SEPT 26, 2008

**COMMON PLANT
 SITE PLAN
 LOT LAYOUT
 PATERSON LAKE, NT**

DRAWING NUMBER				REV
REGION	LOCATION	CENTRE	DRAWING No.	
NT	PTLK	RR	X70001-01	7