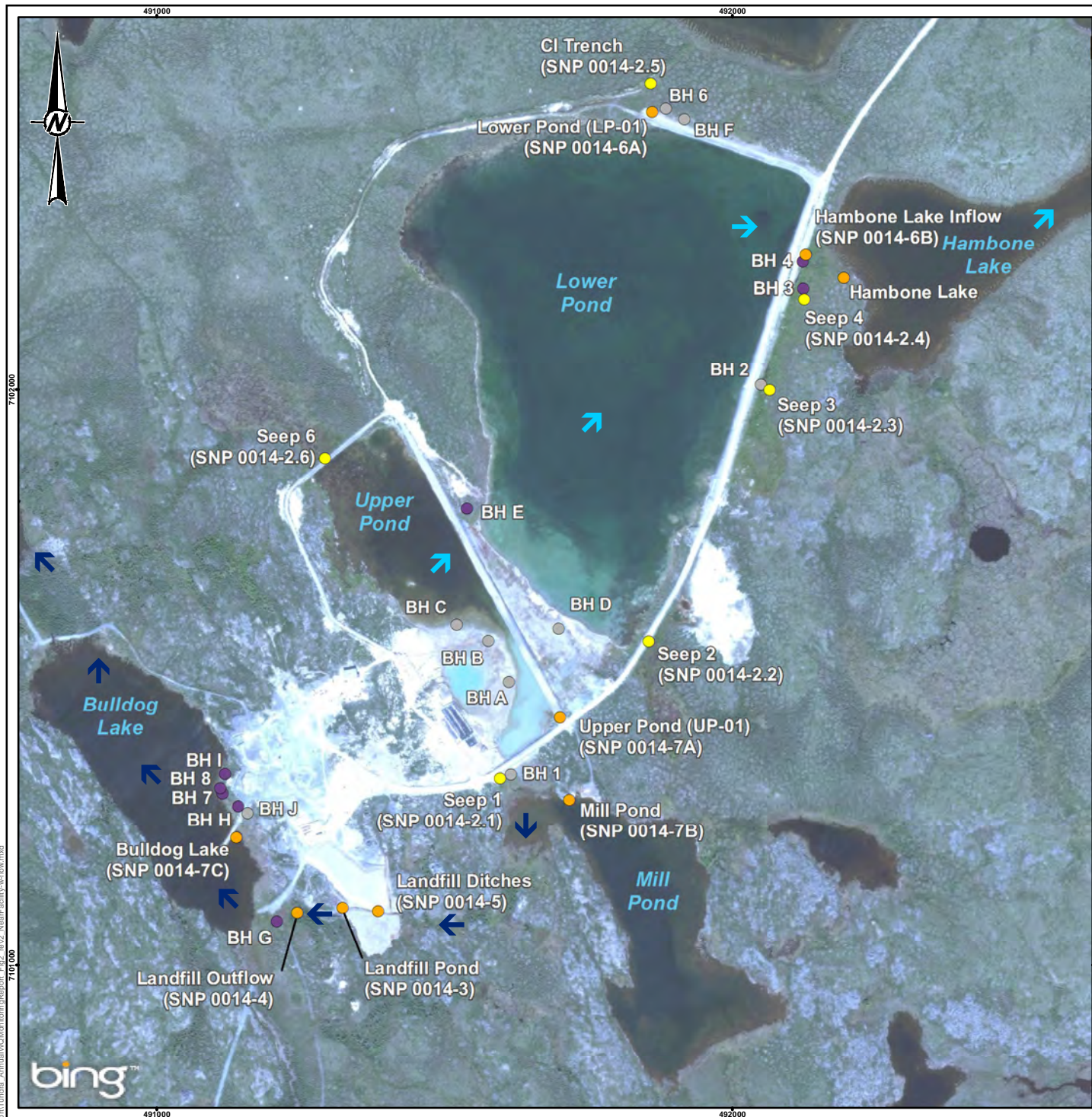


Appendix G

Surveillance Network Program (SNP)
Monitoring Locations
Tundra Mine Remediation Project

Site Description of SNP Sampling Locations

| SNP Station | Site Description |
|-----------------------|---|
| SNP 0014-1 | Potable water location – Matthews Lake |
| Seeps | Existing Seepage Sites: |
| SNP 0014-2.1 | Seep 1 – Southeast corner of TCA Upper Pond |
| SNP 0014-2.2 | Seep 2 – Southeast corner of TCA Upper Pond |
| SNP 0014-2.3 | Seep 3 – Along East dam of TCA Lower Pond |
| SNP 0014-2.4 | Seep 4 – Along East dam of TCA Lower Pond |
| SNP 0014-2.5 | Cl-Trench – Along North dam of TCA Lower Pond |
| SNP 0014-2.5 | Seep 6 – Northwest corner of TCA Upper Pond |
| Landfill Sites | |
| SNP 0014-3 | Landfill leachate (SE corner of Landfill where ditch flows toward wetland) |
| SNP 0014-4 | Wetland between Landfill and Bulldog Lake directly downstream diversion ditches |
| SNP 0014-5 | Northeast corner of landfill ditches immediately upstream of landfill |
| Pathway 1 | Pathway from TCA (Lower Pond) to Hambone Lake through to Courageous Lake |
| SNP 0014-6A | Lower Pond of the TCA |
| SNP 0014-6B | Hambone Lake near original inlet at the northeast corner of the Lower Pond |
| SNP 0014-6C | Hambone Lake near the outlet |
| SNP 0014-6D | Trans Saddle Lake near the outlet |
| SNP 0014-6E | Powder Mag Lake |
| SNP 0014-6F | Sandy Lake |
| SNP 0014-6G | Powder Mag Lake Outflow |
| SNP 0014-6H | Between Sandy and Whaletail lakes, immediately upstream of the road crossing |
| Pathway 2 | Pathway from TCA (UP) to Mill Pond to Dump Pond to Mathews Lake: |
| SNP 0014-7A | Upper Pond of the TCA |
| SNP 0014-7B | Mill Pond (East of Upper Pond) |
| SNP 0014-7C | Bulldog Lake (Downstream of landfill and main mine site). |
| SNP 0014-8 | Control Lake north of Airstrip in an undisturbed area |
| SNP 0014-9 | Between Sandy and Powder Mag Lakes, immediately downstream of the road crossing |



LEGEND

Legend

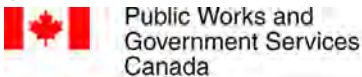
- Surface Water
- Seepage
- Groundwater
- Groundwater (Inactive)

Flow Pathway

- ↗ Pathway I
- ↖ Pathway II

NOTE:
 CI Trench = catchment interceptor trench
 Upper Pond and Lower Pond collectively form the tailings containment area.

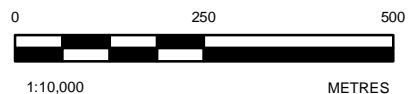
CLIENT



CONSULTANT



| | |
|------------|------------|
| YYYY-MM-DD | 2016-01-27 |
| DESIGNED | CW |
| PREPARED | CW |
| REVIEWED | KMH |
| APPROVED | DP |



REFERENCE(S)

1. BASE MAP: © 2010 DIGITALGLOBE © 2010 GEOEYE EARTHSTAR GEOGRAPHICS SIO © 2016 MICROSOFT CORPORATION
2. DATUM: NAD83 UTM ZONE 12N

PROJECT

TUNDRA MINE REMEDIATION MONITORING

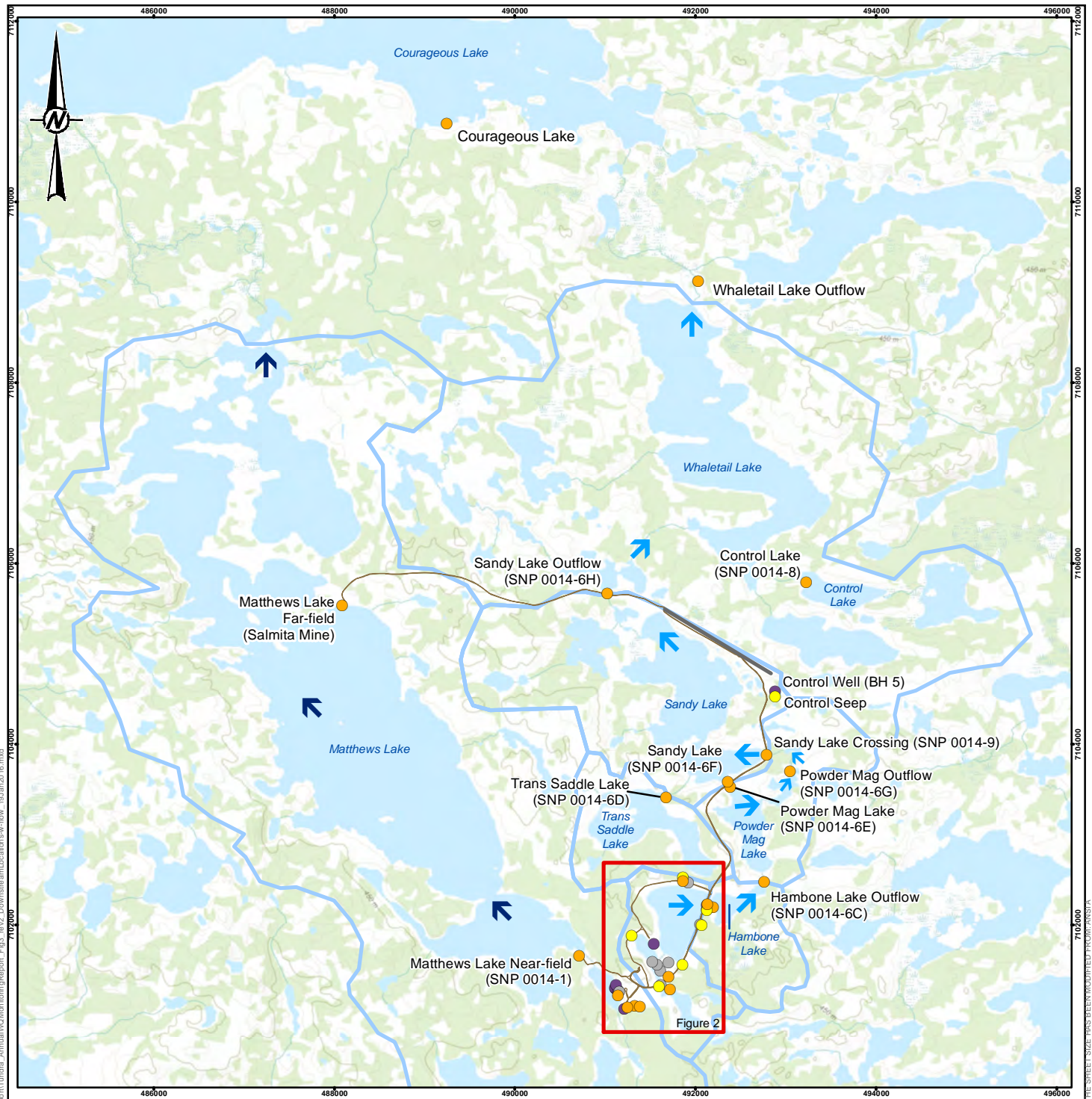
TITLE

NEAR-FACILITY FLOW PATHWAYS AND WATER QUALITY MONITORING STATIONS

| | | | |
|-------------|---------|------|--------|
| PROJECT NO. | CONTROL | REV. | FIGURE |
| 1533346 | | A | 2 |

PATH: N:\Active\GIS\015\1533346 - Tundra Mine Remediation\Annual Water Quality Monitoring Final Report\Tundra Annual\QC\Monitor\Report_Fig_2.mxd Near Facility Flow.mxd

IF THIS MEASUREMENT DOES NOT MATCH WHAT IS SHOWN, THE SHEET SIZE HAS BEEN MODIFIED FROM: ANSIA 25mm



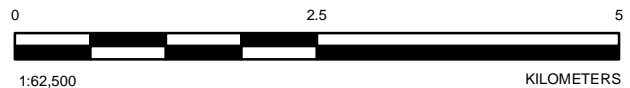
LEGEND

Monitoring Station Type

- Surface Water
- Seepage
- Groundwater
- Groundwater (Inactive)
- Near Facility Monitoring Area (detailed in Figure 2)

Flow Pathway

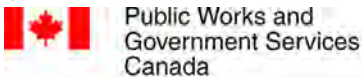
- ← Pathway I
- ↙ Pathway II
- Watershed Boundary
- Road
- Airstrip



REFERENCE(S)

1. BASE MAP: ESRI, HERE, DELORME, INTERMAP, INCREMENT P CORP., GEBCO, USGS, FAO, NPS, NRCAN, GEOBASE, IGN, KADASTER NL, ORDANCE SURVEY, ESRI JAPAN, METI, ESRI CHINA (HONG KONG), SWISSTOPO, MAPMYINDIA, © OPENSTREETMAP CONTRIBUTORS, AND THE GIS USER COMMUNITY
2. DATUM: NAD83 UTM ZONE 12N

CLIENT



PROJECT

TUNDRA MINE REMEDIATION MONITORING

CONSULTANT



| | |
|------------|------------|
| YYYY-MM-DD | 2016-01-27 |
| DESIGNED | CW |
| PREPARED | CW |
| REVIEWED | KMH |
| APPROVED | DP |

TITLE

DOWNSTREAM FLOW PATHWAYS AND WATER QUALITY MONITORING STATIONS

| | | | |
|-------------|---------|------|--------|
| PROJECT NO. | CONTROL | REV. | FIGURE |
| 1533346 | | A | 3 |

PATH: N:\Active\GIS\0151\1533346_Tundra\Mapping\MXD\130010 - Annual Water Quality Monitoring Final Report\Tundra - Annual\MO\Monitor\Report_Fig3_rev2_DownstreamLocations.swf - 19-Jan-2016.mxd

25mm IF THIS MEASUREMENT DOES NOT MATCH WHAT IS SHOWN, THE SHEET SIZE HAS BEEN MODIFIED FROM ANS/GTA