

Closure and Restoration Plan



Redbed Resources Corp.
14 MacDonald Road
Whitehorse, YT Y1A 4L2

June 24, 2019

CONTENTS

INTRODUCTION	2
DESCRIPTION OF FACILITY	2
ONGOING OPERATIONS	5
SEASONAL ABANDONMENT	7
FINAL CLOSURE & RESTORATION	7
REFERENCES	8



INTRODUCTION

Redbed Resources Corp.'s Redstone Property is located on NTS sheets 95 L/10, 15 and 95M/2,6,11,14 in the Nahanni Mining District of the Northwest Territories, Canada. The property is centred about 63° 11' N latitude and 127° 16' W longitude or UTM 587,100 E 7,007,685 N (NAD83, Zone 9N) (Figure 1). The property is bounded by approximately 62° 36' 28" to 63° 47' 00" North and 126° 31' 35" to 128° 02' 54" West.

Redbed intends to carry out exploration work consistent with the previous land use permit (MV2005-C0005) held by Redbed under Copper North Mining Corp., including prospecting, mapping, and sampling. The work will be conducted from Redbed's Coates Lake Camp, which was established at the north end of Coates Lake in 2005. The number of persons onsite is expected to number 4 to 5 for the up to 15 day duration of the 2019 exploration program.

This document describes how Redbed intends to conduct restoration and closure of the project facilities and any disturbed areas.

DESCRIPTION OF FACILITY

Owner

Redbed Resources Corp.

14 MacDonald Road

Whitehorse, YT

Y1A 4L2

Project Contact

Jim Coyne

Phone: (867) 633-3677

Fax : (867) 633-3641

Field Manager

Robert Coyne

Phone: (867) 633-3677

Fax : (867) 633-3641

Facility – Redbed's existing 12 person camp located at 63° 11' N 127°16' W at the north end of Coates Lake (Figure 2).

Figure 1

Exploration Areas

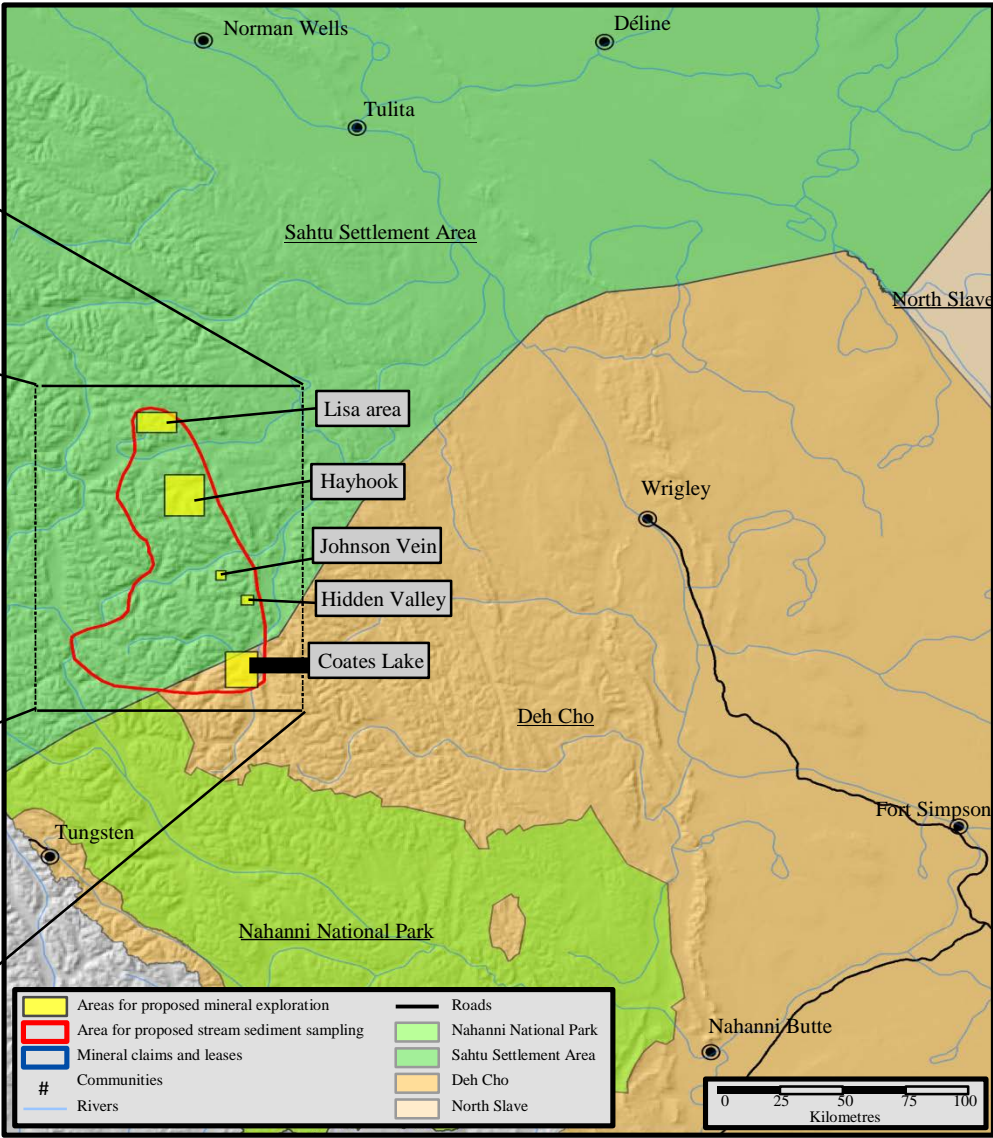
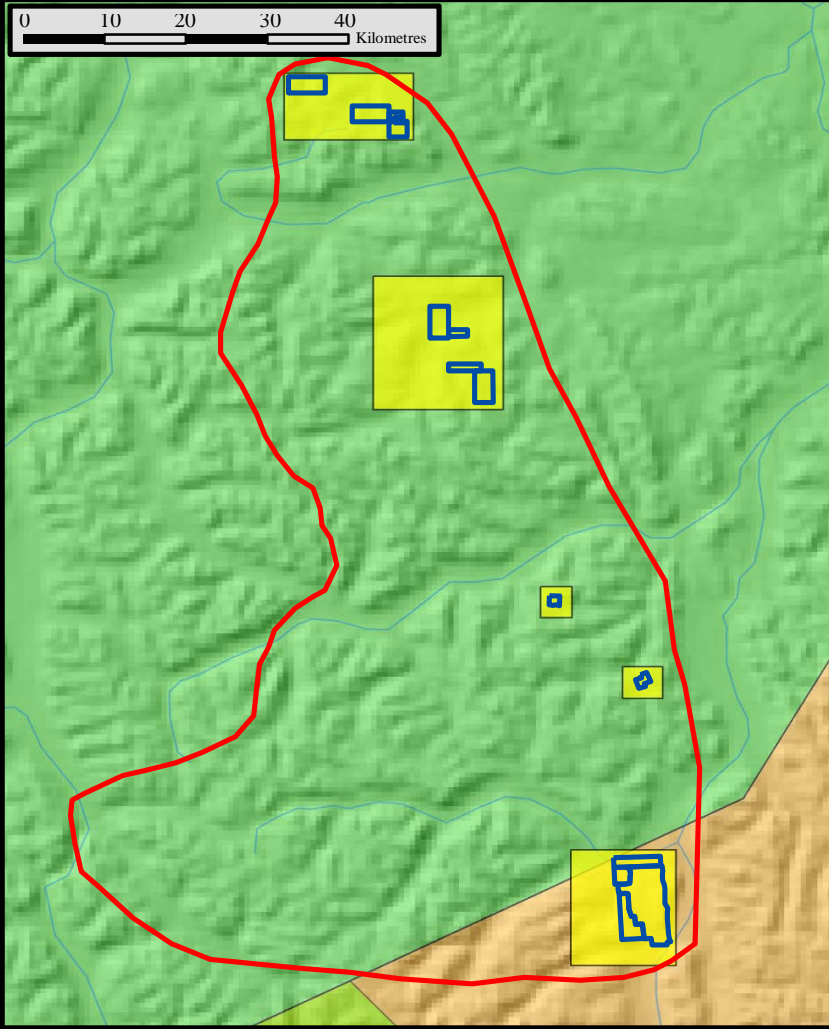
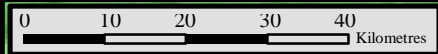




Figure 2
Map of the Coates Lake Camp

0 10 20 30 40
 Meters

UTM NAD83 Zone 9N

N

Fuel Storage Locations – The primary fuel cache is at the Coates Lake airstrip with the secondary fuel cache located at the Coates Lake Camp (Figure 3), both Jet A/A-1 fuel and diesel fuel are stored at each. Propane and unleaded gasoline are stored at the Coates Lake camp. The primary fuel cache at the airstrip is located approximately 250m from the nearest water body and the cache is underlain by impervious material, bermed around the perimeter.

Fuel Storage Containers – Jet A/A-1 fuel, diesel fuel, and unleaded gasoline are stored in 205 litre (45 US gallon) steel drums. Propane is stored in 45 kg steel tanks. Four cycle motor oil is stored in 1l plastic bottles.

Storage Capacity – Fuel stored at the property for the 2019 exploration program is planned to be 14 drums (2,870 litres) of Jet-A/A-1, 4 drums of diesel (820 litres), 1 drum unleaded gasoline (205 litres) plus 2, 45 kg propane cylinders (90 kg). One case of four stroke motor oil also will be stored at the Camp for use in the generator and water pump.

ONGOING OPERATIONS

The exploration work planned for 2019 must be completed in the absence of snow cover. Restoration during operations for fuel storage, contamination clean-up, and camp operations are described below.

Fuel Storage

- All fuel storage and handling is to be guided by the procedures set out in the Spill Contingency Plan for exploration conducted on Redstone Property.
- Empty fuel drums and propane tanks are to be backhauled to Whitehorse for proper disposal.

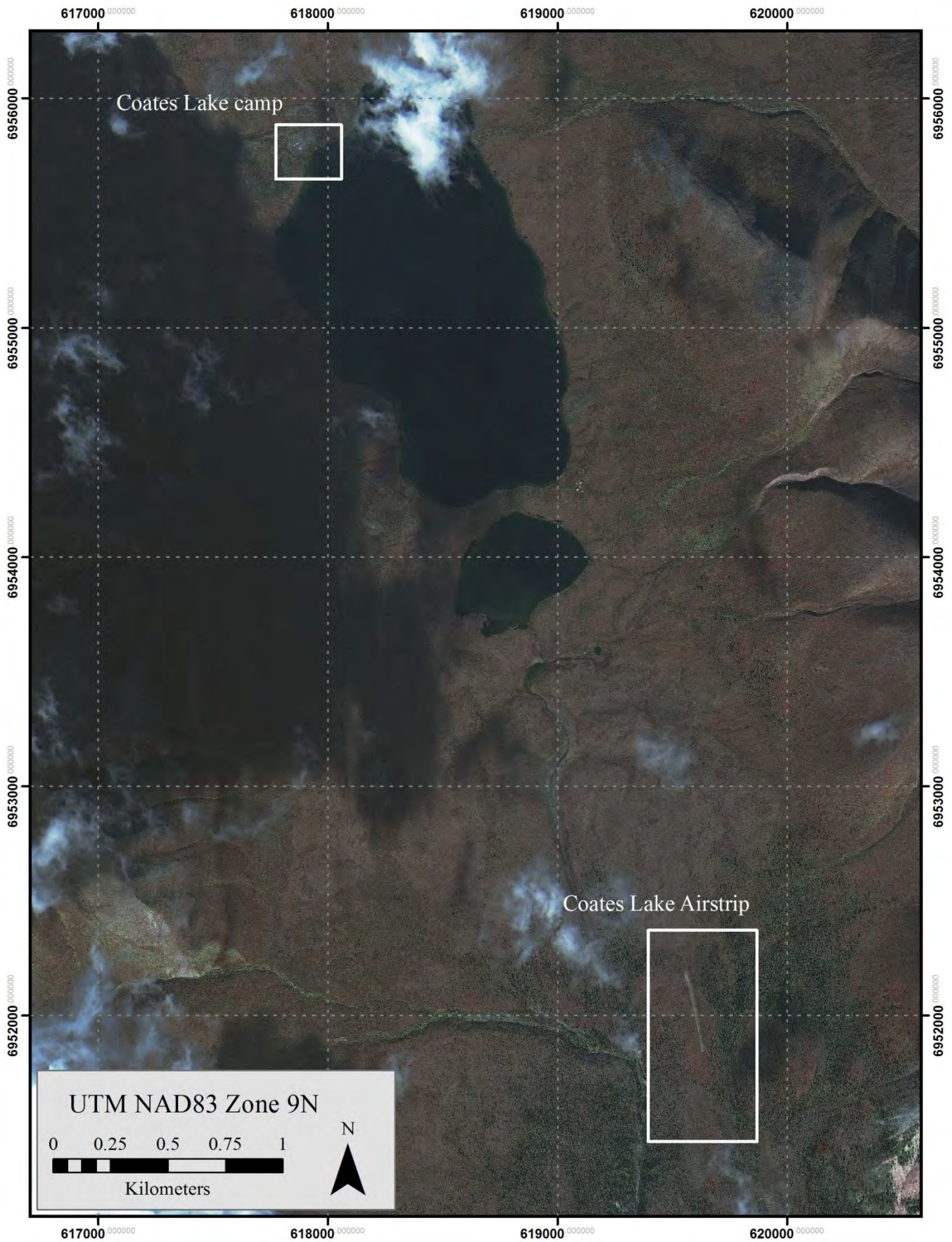
Contamination Clean-up

- Any soil around fuel caches or transfer locations that has become contaminated will be treated as set out in the Spill Contingency Plan. Before and after photos will be taken to document the contamination and the clean-up.

Camp

- Combustible waste will be incinerated on site.
- Recyclables and all non-combustible waste, and any hazardous wastes will be flown out and disposed of in an approved waste management facility.

Figure 3 – Coates Lake Airstrip



SEASONAL ABANDONMENT

Fuel Storage

- All stove fuel lines will be shut off, drained and stove barrels will have bungs tightened.
- Fuel caches will be inventoried and inspected for any leaks.

Contamination Clean-up

- Any soil around fuel caches or transfer locations that has become contaminated will be treated as set out in the Spill Contingency Plan. Before and after photos will be taken to document the contamination and the clean-up.

Camp

- Existing camp infrastructure will be left intact.
- Tents will be returned to Whitehorse.
- The camp generator may be removed from site for servicing and storage.
- All remaining combustible waste will be incinerated on site.
- All remaining food, recyclables, non-combustible waste, and hazardous waste will be backhauled to Tungsten and disposed of in an approved waste management facility
- Sanitary sewage in the pit privy will be limed.

FINAL CLOSURE & RESTORATION

The Redstone Project is at a preliminary stage of exploration activities. No schedule for the conclusion of this land use operation has been defined at this time. When a final closure decision is made, the following final closure procedures will be implemented:

Fuel Storage

- Upon completion of the land use operation all remaining empty fuel drums will be removed from the area for proper disposal and any remaining fuel caches will be moved to an approved/permitted storage location.

Contamination Clean-Up

- Any soil around fuel caches or transfer locations that has become contaminated will be treated as set out in the Spill Contingency Plan.
- Before and after photos will be taken to document the contamination and the clean-up.

Camp

- At the end of the project all camp materials and equipment and fuel drums will be removed from the site.

- All remaining combustible waste will be incinerated or backhauled to Tungsten, as required by the Waste Management Plan for exploration conducted on the Redstone Property.
- All remaining food, recyclables, non-combustible waste, and hazardous waste will be backhauled to Tungsten and disposed of in an approved waste management facility
- All wood (tent floors, frames etc.) will be backhauled to Whitehorse or all clean wood will be burned with all remaining waste metals collected for proper disposal in Tungsten.
- The pit privy will be decommissioned and the pit backfilled to surface.
- The grey water sump will be decommissioned and backfilled to surface.
- A final inspection will ensure there is no remaining material at the site and that there is little/no evidence of Redbed Resources' land use activity upon completion of the operation.

REFERENCES

Redbed Resources Corp. 2019 Waste Management Plan.

Redbed Resources Corp. 2019 Spill Contingency Plan.