



Kal Virk

Upstream Environment and Regulatory Supervisor
587-476-3879 Tel.
kal.s.virk@esso.ca

June 2, 2016

SLWB File: S13L1-007

Bonnie Bergsma
Sahtu Land and Water Board
Regulatory Specialist
P.O. Box 1
Fort Good Hope, NT
X0E 0H0

Re: 2016 Depth of Cover In-River Work As-Built Submission

Dear Bonnie,

Imperial Oil Resources N.W.T Limited (Imperial) is submitting as-built drawings for the Goose Island to Bear Islands and Bear Island to Island 6 in-river work, as per the SLWB approval letter dated January 18, 2016. Work was completed February 26, 2016.

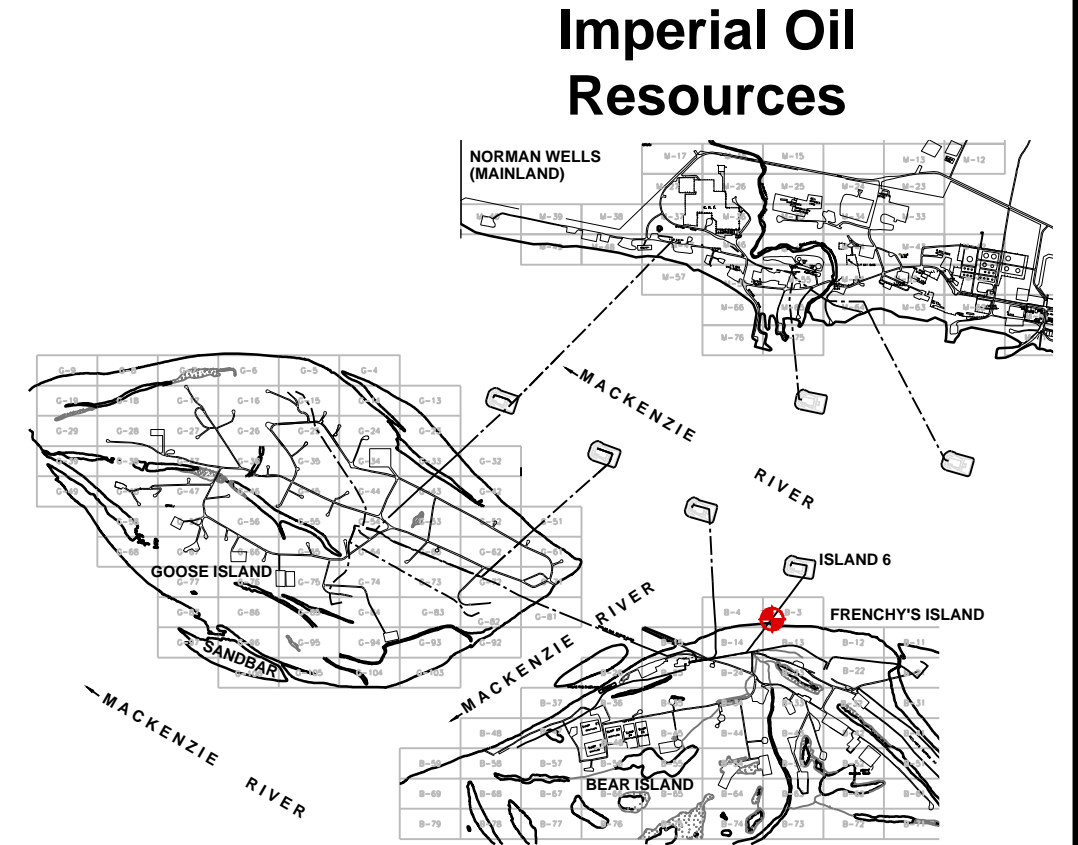
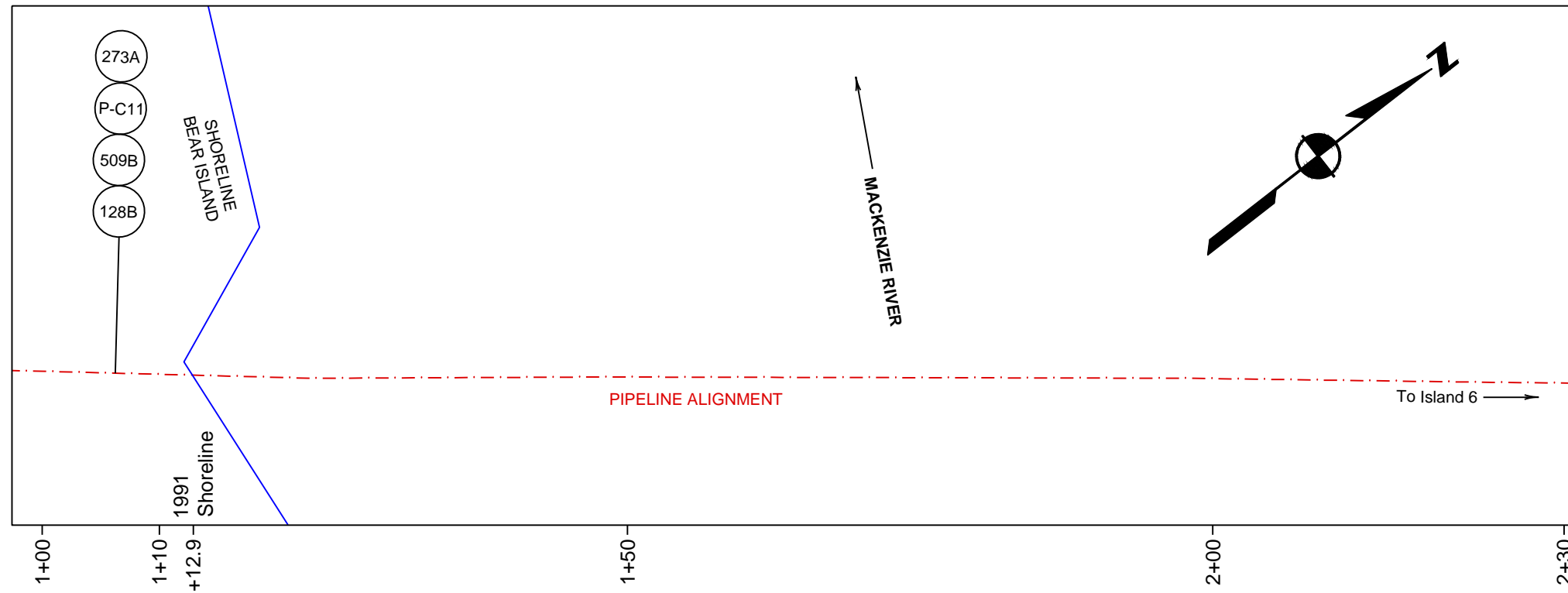
Any questions or concerns with the as-built drawings submitted please contact me at (867) 587-3215.

Sincerely,

A handwritten signature in black ink, appearing to read "Lindsay Hollands".

Lindsay Hollands, B.ASc
Regulatory and Environmental Advisor
Norman Wells Operations

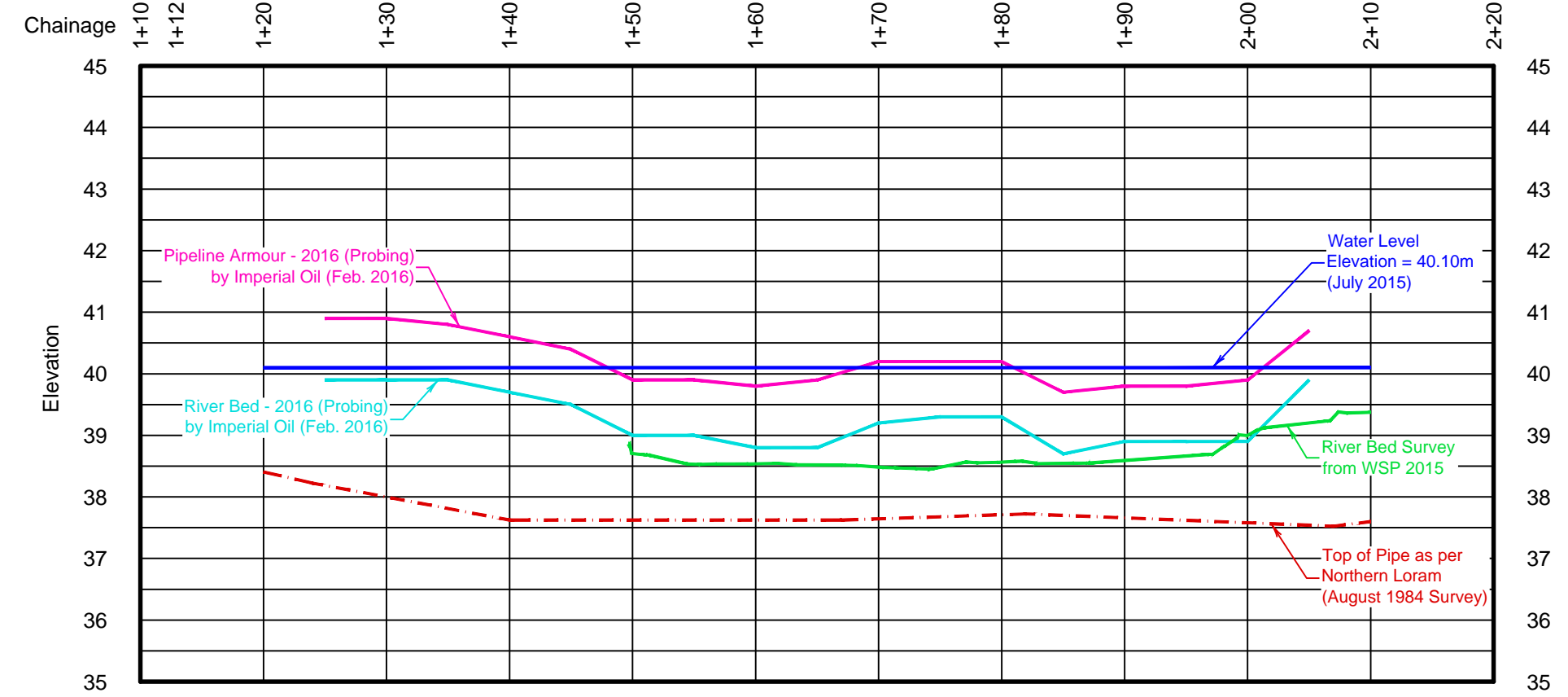
cc: T. Morton, AANDC, Yellowknife
I. Colquhoun NEB, Calgary
M. D'Aguiar, DFO, Yellowknife



Imperial Oil Resources

Key Plan
Scale = 1:50,000

Plan Showing Pipeline Armour As-Built Island 6 to Bear Island Norman Wells, N.W.T.



LEGEND

- Water Level - 2015 (Bathymetric Survey) - By WSP.....
- Pipeline Armour - 2016 (Probing) - By IORL Representative.....
- River Bed - 2016 (Probing) - By IORL Representative.....
- River Bed - 2015 (Bathymetric Survey) - By WSP.....
- Top of Pipe as per Northern Loram (August 1984 Survey).....
- Survey Location:.....

NOTES

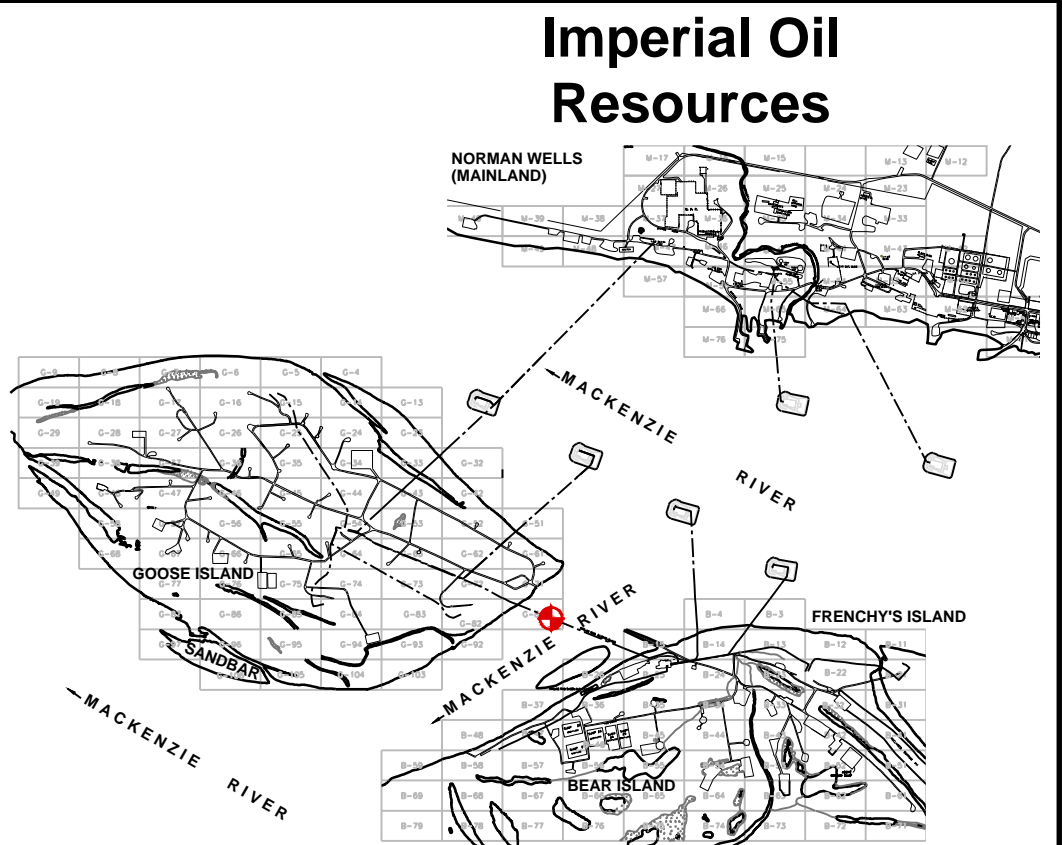
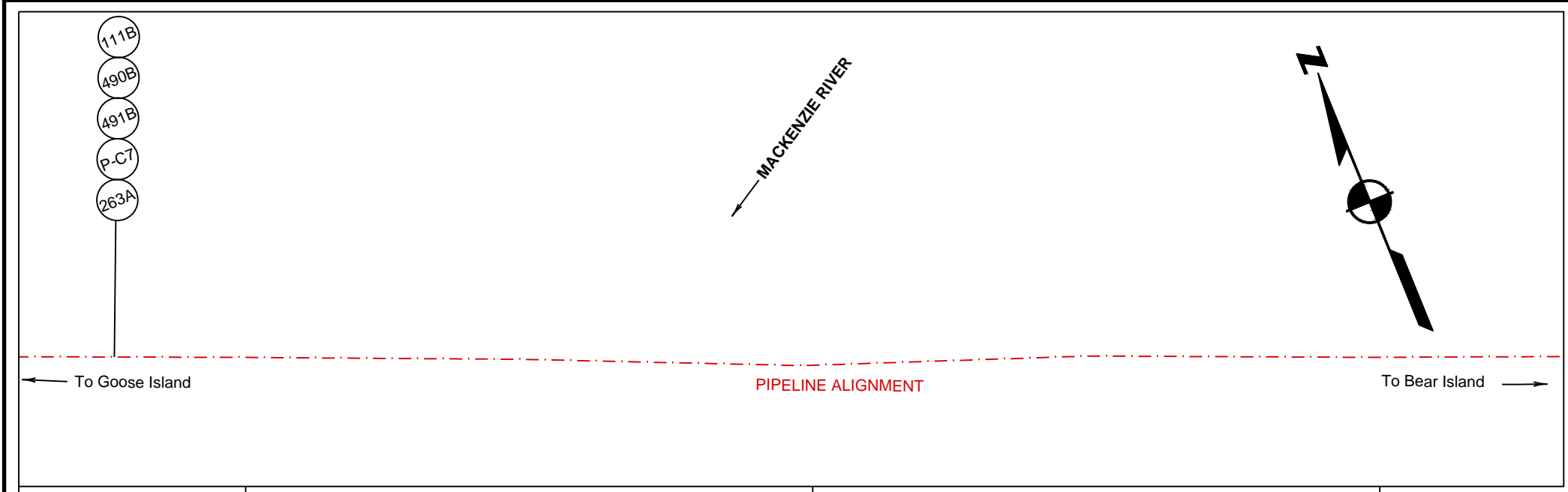
- Distances and Elevations are shown in metres and decimals thereof.
- Elevations are relative to Geodetic BM 74T016 (Elevation = 60.189)
- Stations noted on plan are derived from plan provided by IORL.
- Pipeline armour and river bed probing elevations provided by Don Cretin on February 26, 2016.

Scale 1:500 Horizontal & 1:100 vertical

Facility Table	
No.	Substance Description
273A	88.9 NG (Gas Lift) BIT 4 to Is.6 (Buried) 273-273A
P-C11	4160 H.V. BIT 4 5Kv Switch Gear Is.6 Tr-C6
509B	88.9 INJ-FW BIT 4 to Is.6, Conc Coated 509-509A-509B-509C
128B	168.3 OE Is.6 to BIT 4, Conc Coated 128-128A-128B-128C

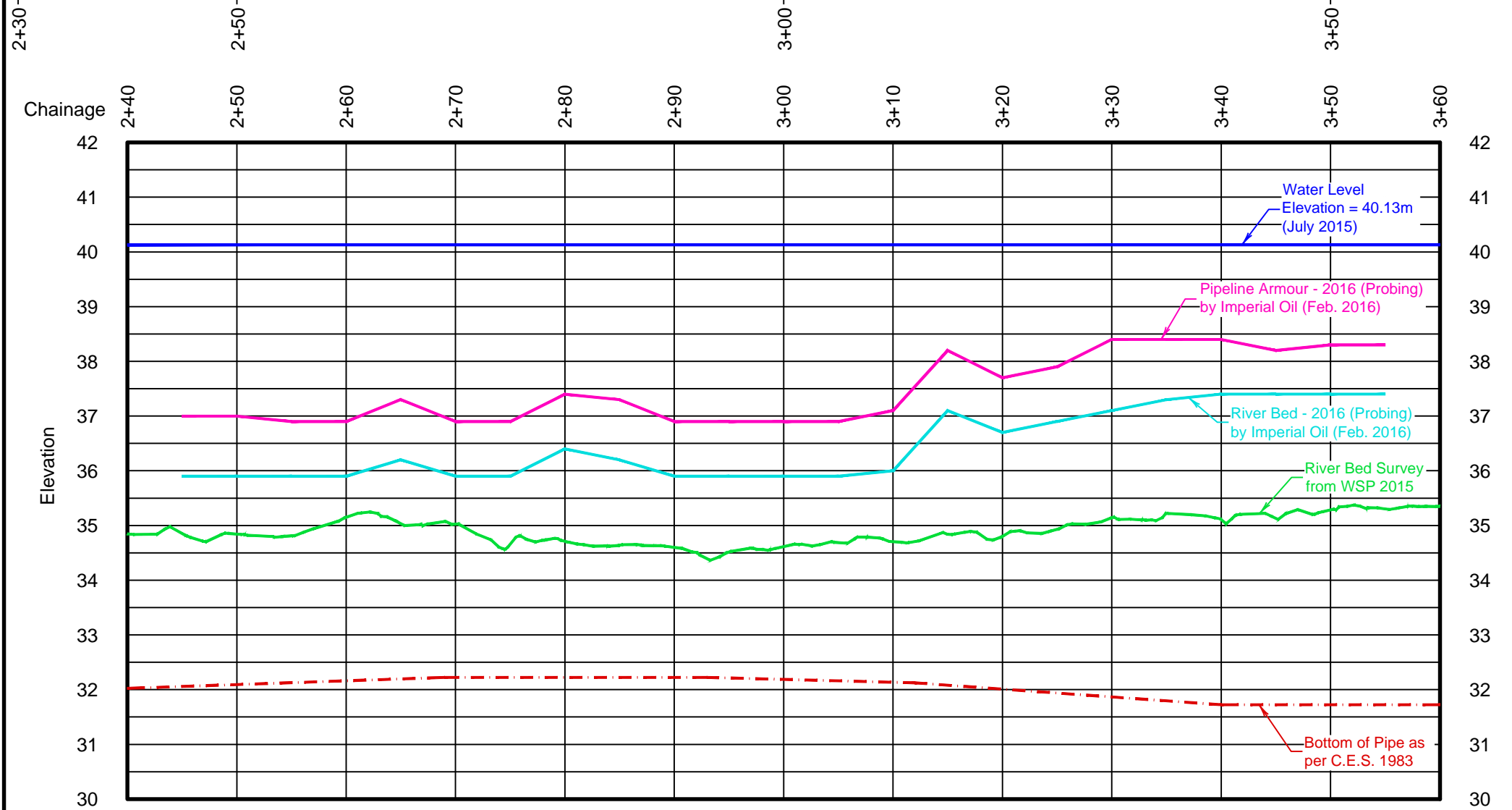
Edmonton (780) 466-6555
 Calgary (403) 263-8200
 Fort St. John (250) 787-0300
 Grande Prairie (780) 539-3222
 Medicine Hat (403) 527-3707
 Regina (306) 586-0837

Mar. 18/16	Original Issue	0
KA/RM		
Date & Initials	Description	Rev.
Ref. Job: 010053768		
IORL Ref: 096-0179-700-801 77		
Profile	WSP File: 010055255-MCPR01-R00	EDM



Key Plan
Scale = 1:50,000

**Plan Showing
Pipeline Armour As-Built
Goose Island to Bear Island
Norman Wells, N.W.T.**



Scale 1:500 Horizontal & 1:100 vertical

LEGEND

- Water Level - 2015 (Bathymetric Survey) - By WSP.....
- Pipeline Armour - 2016 (Probing) - By IORL Representative.....
- River Bed - 2016 (Probing) - By IORL Representative.....
- River Bed - 2015 (Bathymetric Survey) - By WSP.....
- Bottom of Pipe as per C.E.S. 1983.....
- Survey Location:.....

NOTES

- Distances and Elevations are shown in metres and decimals thereof.
- Elevations are relative to Geodetic BM 74T016 (Elevation = 60.189)
- Stations noted on plan are derived from plan provided by IORL.
- Pipeline armour and river bed probing elevations provided by Don Cretin on February 27, 2016.

Edmonton (780) 466-6555
 Calgary (403) 263-8200
 Fort St. John (250) 787-0300
 Grande Prairie (780) 539-3222
 Medicine Hat (403) 527-3707
 Regina (306) 586-0837

Facility Table	
No.	Substance Description
111B	273.1 OE BIT 4 to GIT 4, Conc Coated 111A-111B-111C
490B	168.3 INJ-FW GIT 4 to BIT 4, Conc Coated 490-490A-490B
491B	168.3 INJ-FW GIT 4 to BIT 4, Conc Coated 491-491A-491B-491C
P-C7	From GIT 4 5 Kv Switch Gear to BIT 4 5 Kv Switch Gear
263A	114.3 NG (Gas Lift) GIT 4 to BIT 4, (Conc Coated) 263-263A-263B

Mar. 18/16	Original Issue	0
KA/RM		
Date & Initials	Description	Rev.
Ref. Job: 010053768		
IORL Ref: 096-0179-700-801 78		
Profile	WSP File: 010055256-MCPR01-R00	EDM