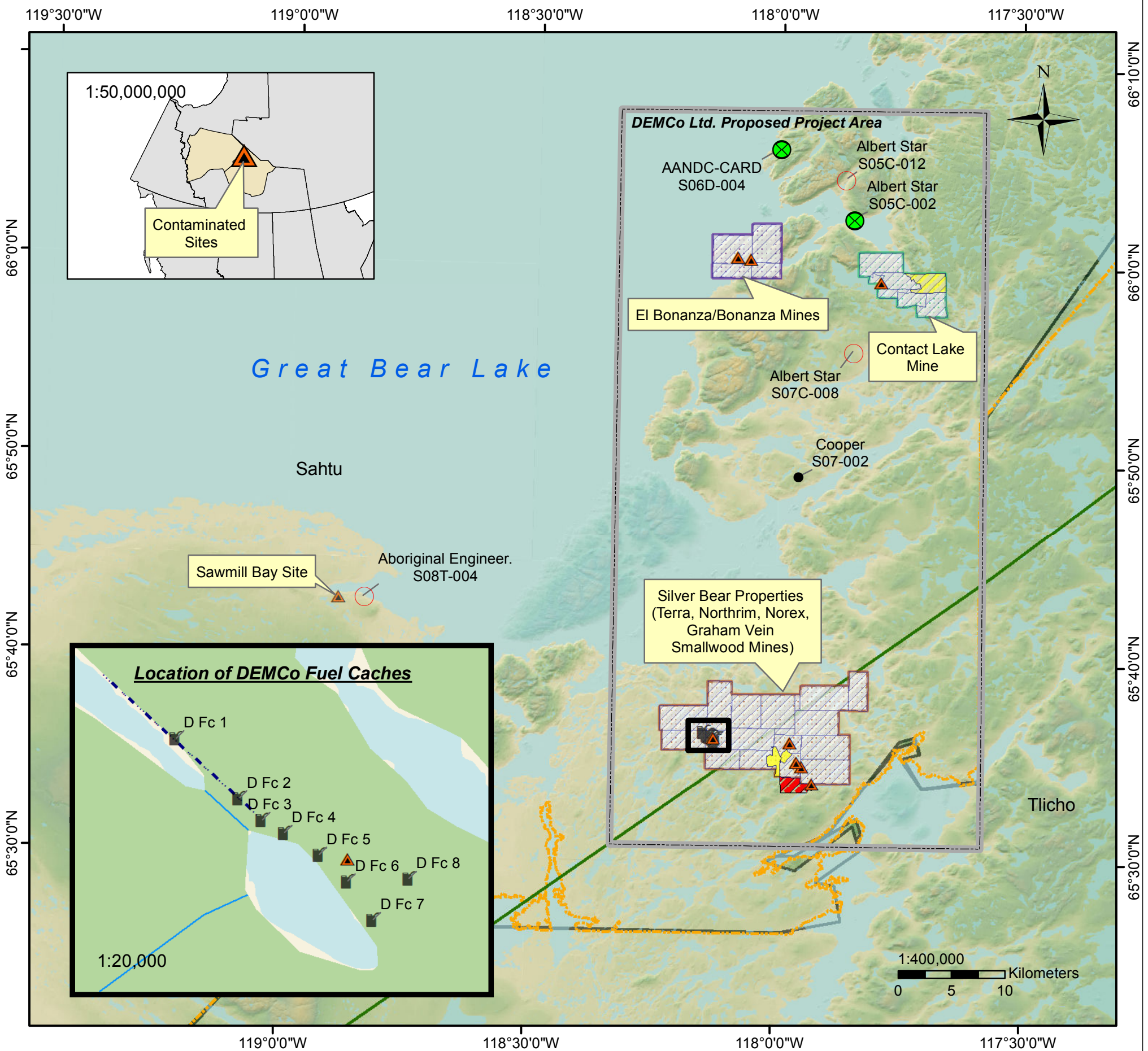


Authorizations and Mineral Tenure in Vicinity of Great Bear Lake Remediation Program



Map Description:

This map illustrates the DEMCo Ltd's proposed project area from its application (S15H-003), currently under review. The mines sites associated with the Great Bear Lake remediation includes: Silver Bear Mines, El Bonanza Mines, Contact Lake Mine, and Sawmill Bay Site. Authorizations in vicinity of sites are also illustrated.

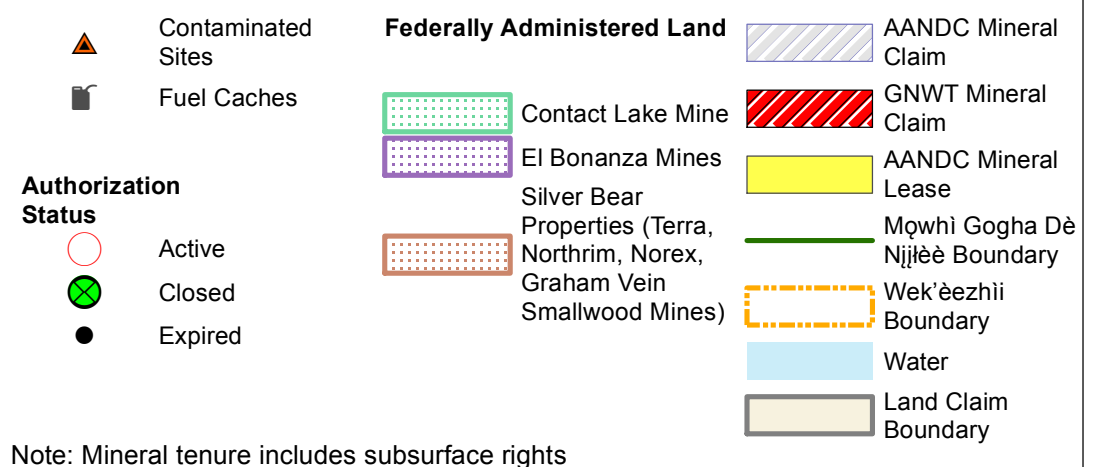
This map is for illustrative purposes only. This map is not a legal document, and should not be treated as such.

Data Source:

AANDC: Mineral Claims (Mar 26, 2014),
 Federally Managed Land (Jul, 2015)
 Mqwhì Gogha Dè Njìlèè Boundary (July 11, 2012)
 ITI: GNWT Mineral Claims (2015)
 NRC: Land Claim Boundary,
 Water, Province (all accessed 2015)

Projection: Lambert Conformal Conic
 Datum: North American 1983 CSRS
 False Easting: 0.0000
 False Northing: 0.0000
 Central Meridian: -112.0000
 Standard Parallel 1: 62.0000
 Standard Parallel 2: 70.0000
 Latitude Of Origin: 0.0000
 Units: Meter

Map Updated:
 July 23, 2015



This map is created by Sahtu Land and Water Board.
 For any questions, please contact:

Jacqueline Ho
 Regulatory Support Technician
 Sahtu Land and Water Board
 jacqueline.ho@slwb.com
 867 598 2413 (ext. 230)

E:\SahtuGIS\Maps\Mining