

February 28, 2019

M. Joseph Mackenzie
Chair - Wek'èezhìi Land and Water Board
#1, 4905-48th Street
Yellowknife, NT
X1A 3S3

M. Mackenzie,

Re: Surveillance Network Program (SNP) January 2019 Monthly Report for Water Licence W2012L2-0001

As per Part "B" of the Surveillance Network Program for the Water Licence W2012L2-0001, please find enclosed the Surveillance Network Program (SNP) Monthly Report for January 2019.

We trust this report meets with your requirements. Please contact the undersigned at (403) 910-1933 ext 2403 should you have any questions or comments.

Sincerely,



Annie Larrivee, P.Eng.
Acting Team Lead – Environment LOM

for

Lukas Novy, M.Sc., P.Eng.
Acting Superintendent Environment

Table of Contents

1. Sampling Summary for Licence W2012L2-0001 2

2. Part B. Flow and Volume Measurement Requirements..... 4

 B(2.) Volume of Water Obtained from Grizzly, Little, Falcon, Thinner and Sable Lakes 4

 B(3.) Lake Level Elevation Metres above Sea Level 4

 B(4.) Source and Volume of Recycled Water Used..... 4

 B(5.) Volume of Water or Waste Discharged to Containment Facilities..... 4

 B(6.) Volume of Water or Waste Discharged from Containment Facilities 5

 B(7.) Quantities of Minewater Pumped from each Open Pit and Underground Mines..... 5

 B(8.) and (9.) Quantity of Sewage Effluent Discharged and Sewage Solids Removed from the Sewage Treatment Plant (STP)..... 5

 B(10.) Quantity of Sewage Delivered to STP from Sable and Pigeon Developments 5

 B(12.) Quantity of Minewater Pumped from the Pigeon, Sable and Beartooth open pits..... 5

3. Part C. Other Monitoring Requirements 6

 C(1.) Precipitation Data from Koala Met Station 6

 C(4.) Quantity of Ore Produced 6

 C(5a.) Quantity of Waste Rock and Coarse Processed Kimberlite Produced 6

 C(5b.) Waste Rock Disposal Locations..... 6

1. Sampling Summary for Licence W2012L2-0001

In accordance with the requirements of Water Licence W2012L2-0001, there were no samples collected in the month of January 2019. Please refer to Figure 1 – Surveillance Network Monitoring Stations for locations of all Ekati sampling stations.

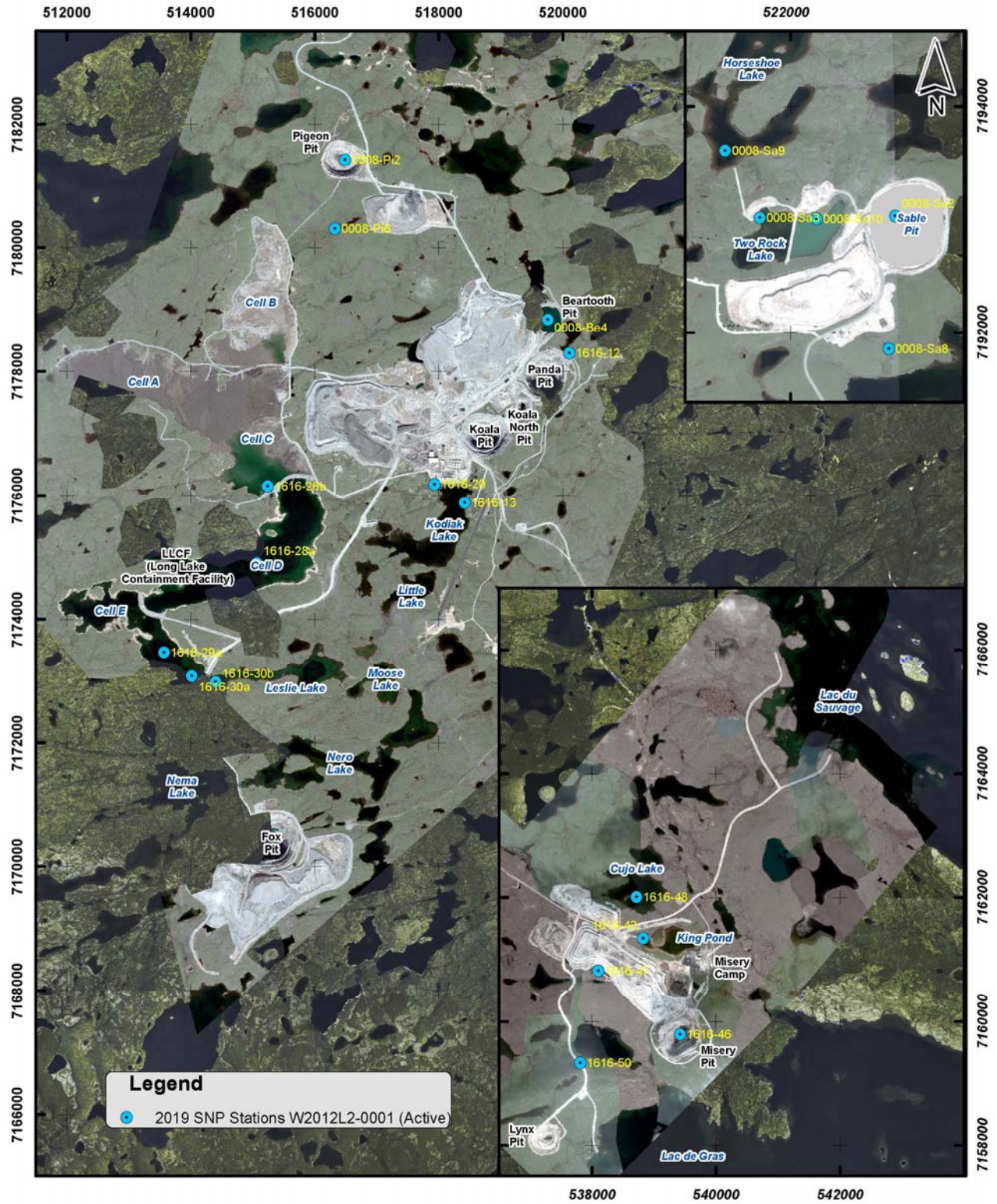
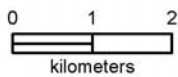


Figure 1. W2012L2-0001 Surveillance Network Monitoring Stations



1:80,000
Imagery Acquired July / August 2018



2. Part B. Flow and Volume Measurement Requirements

B(2.) Volume of Water Obtained from Grizzly, Little, Falcon, Thinner and Sable Lakes

Lake Name	Current Month (m ³)	Year to Date (m ³)
Grizzly Lake	7,598	7,598
Little Lake	0	0
Falcon Lake	0	0
Thinner Lake	0	0

Note: Sable Pit is in production and Sable Lake doesn't exist anymore

B(3.) Lake Level Elevation Metres above Sea Level

Lake Name	Lake Elevation (masl)
Grizzly Lake	Frozen
Little Lake	Frozen
Upper/North Panda Lake	Frozen
Falcon Lake	Frozen
Thinner Lake	Frozen
Cell E LLCF	447.74*
King Pond	Frozen

*Cell E lake elevation taken through ice.

B(4.) Source and Volume of Recycled Water Used

Plant	Source	Current Month (m ³)	Year to Date (m ³)
Process	LLCF	407,531	407,531

B(5.) Volume of Water or Waste Discharged to Containment Facilities

Location	Current Month (m ³)	Year to Date (m ³)
Into Long Lake Containment Facility		
Process Plant Liquids	547,550	547,550
Process Plant Solids	69,477	69,477
Minewater	0	0
Other Wastes	0	0
Into Beartooth Pit		
Minewater	0	0
Into Two Rock Sedimentation Pond		
Minewater	0	0
Other Wastes	0	0
Into King Pond Settling Facility		
Minewater	0	0
Other Wastes	0	0

Notes: "Other Wastes" include camp sumps not associated with minewater

B(6.) Volume of Water or Waste Discharged from Containment Facilities

Location	Current Month (m ³)	Year to Date (m ³)
From LLCF		
To Leslie Lake	0	0
For Road Watering	0	0
From King Pond		
To Cujo Lake	0	0
For Road Watering	0	0
From Two Rock Sedimentation Pond		
To Horseshoe Lake	0	0
For Road Watering	0	0

B(7.) Quantities of Minewater Pumped from each Open Pit and Underground Mines

Origin	Destination							
	LLCF (m ³)		Beartooth (m ³)		Two Rock (m ³)		King Pond (m ³)	
	Monthly	YTD	Monthly	YTD	Monthly	YTD	Monthly	YTD
Koala & Panda Pits	0	0						
Underground	-	-						
Pigeon Open Pit	0	0	0	0				
Beartooth Open Pit	0	0						
Misery & Lynx Pits							0	0
Sable Open Pit					0	0		
Total			0		0	0	0	0

Note: Quantities of underground mine water are recycled for use in the underground service water system. Total Underground Minewater includes water from Koala, Koala North and Panda Underground. YTD = Year to Date.

Underground Minewater was not recorded in January as the Panda and Koala undergrounds are under reclamation before closure.

B(8.) and (9.) Quantity of Sewage Effluent Discharged and Sewage Solids Removed from the Sewage Treatment Plant (STP)

From STP	Current Month (m ³)	Year to Date (m ³)
Sewage Solids	227	227
Sewage Effluent	6,432	6,432

B(10.) Quantity of Sewage Delivered to STP from Sable and Pigeon Developments

Location Name	Current Month (m ³)	Year to Date (m ³)
Pigeon Development	1.55	1.55
Sable Development	1.55	1.55

B(12.) Quantity of Minewater Pumped from the Pigeon, Sable and Beartooth open pits

Please refer to Table B(7.) Quantities of Minewater Pumped from Open Pit and Underground Mines.

3. Part C. Other Monitoring Requirements

C(1.) Precipitation Data from Koala Met Station

Month	Precipitation (mm)	Year to Date (mm)
January	4.0	4.0

Note: Monthly adjusted values account for wind undercatch of the Geonor precipitation gauge as explained further in the 2016 Aquatic Effects Monitoring Report.

C(4.) Quantity of Ore Produced

Material (tonnes)	Current Month	Year to Date
Processed Ore	286,444	286,444

Note: Quantity reported represents all operating open pit and underground mines.

C(5a.) Quantity of Waste Rock and Coarse Processed Kimberlite Produced

Material (tonnes)	Current Month	Year to Date
Waste Rock Produced	1,881,327	1,881,327
Coarse Processed Kimberlite	121,020	121,020

Note: Quantities of coarse processed kimberlite and waste rock reported represents all operating open pit and underground mines.

C(5b.) Waste Rock Disposal Locations

Origin	Destination	Waste Rock Produced
Pigeon Pit	Pigeon WRSA	324,354
Lynx Pit	Lynx WRSA	312,944
Sable Pit	Sable South WRSA	1,220,871
Misery UG	Misery WRSA	23,158
January 2019 Total		

Note: All values are in metric tonnes. This table summarizes waste rock from all active pits and underground mines.