

April 30, 2019

M. Joseph Mackenzie
Chair - Wek'èezhìi Land and Water Board
#1, 4905-48th Street
Yellowknife, NT
X1A 3S3

M. Mackenzie,

Re: Surveillance Network Program (SNP) March 2019 Monthly Report for Water Licence W2012L2-0001

As per Part "B" of the Surveillance Network Program for the Water Licence W2012L2-0001, please find enclosed the Surveillance Network Program (SNP) Monthly Report for March 2019.

We trust this report meets with your requirements. Please contact the undersigned at (403) 910-1933 ext 2403 should you have any questions or comments.

Sincerely,



Annie Larrivee, P.Eng.
Environmental Advisor – Waste and Wastewater

for

Lukas Novy, M.Sc., P.Eng.
Team Lead – Environment LOM Planning

Table of Contents

1. Sampling Summary for Licence W2012L2-0001 2

2. Part B. Flow and Volume Measurement Requirements..... 4

 B(2.) Volume of Water Obtained from Grizzly, Little, Falcon, Thinner and
 Sable Lakes 4

 B(3.) Lake Level Elevation Metres above Sea Level 4

 B(4.) Source and Volume of Recycled Water Used 4

 B(5.) Volume of Water or Waste Discharged to Containment Facilities..... 4

 B(6.) Volume of Water or Waste Discharged from Containment Facilities 5

 B(7.) Quantities of Minewater Pumped from each Open Pit and
 Underground Mines..... 5

 B(8.) and (9.) Quantity of Sewage Effluent Discharged and Sewage Solids
 Removed from the Sewage Treatment Plant (STP)..... 5

 B(10.) Quantity of Sewage Delivered to STP from Sable and Pigeon Developments 5

 B(12.) Quantity of Minewater Pumped from the Pigeon, Sable and Beartooth
 open pits..... 5

3. Part C. Other Monitoring Requirements 6

 C(1.) Precipitation Data from Koala Met Station 6

 C(4.) Quantity of Ore Produced 6

 C(5a.) Quantity of Waste Rock and Coarse Processed Kimberlite Produced 6

 C(5b.) Waste Rock Disposal Locations..... 6

Appendix A 7

 Field Parameters for W2012L2-0001 Water Licence 7

 Analytical Results for W2012L2-0001 Water Licence 9

1. Sampling Summary for Licence W2012L2-0001

In accordance with the requirements of Water Licence W2012L2-0001, there were 9 samples collected in the month of March 2019. Please refer to Figure 1 – Surveillance Network Monitoring Stations for locations of all Ekati sampling stations.

A sample from 1616-26b was not collected in March 2019 because the station was frozen to bottom.

Lab Number	Sample ID	Collection Date	Comments
L2246622-1	1616-30a	19-Mar-2019	
L2250029-7	1616-493	24-Mar-2019	Equipment Blank for 1616-29a
L2250029-6	1616-29a-T	24-Mar-2019	
L2250029-5	1616-29a-M	24-Mar-2019	
L2250029-1	1616-121	24-Mar-2019	Field Blank for 1616-30a
L2250029-8	1616-494	24-Mar-2019	Travel Blank for 1616-29a
L2250029-3	1616-28a-T	26-Mar-2019	
L2250029-4	1616-288	26-Mar-2019	Duplicate of 1616-28a-T
L2250029-2	1616-28a-M	26-Mar-2019	

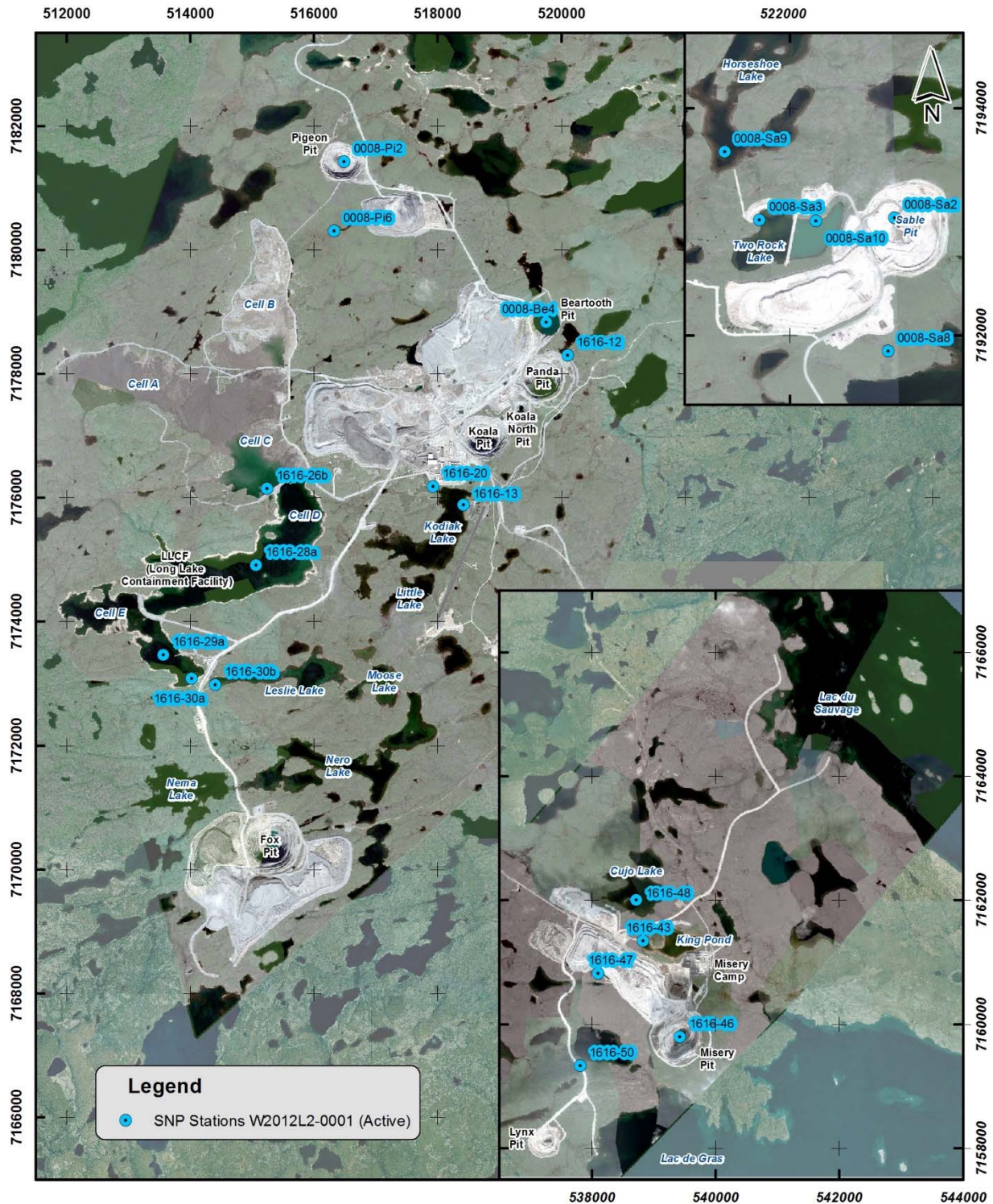
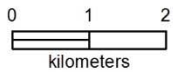


Figure 1. W2012L2-0001 Surveillance Network Monitoring Stations



Satellite Imagery Acquired Jul/Aug 2018



2. Part B. Flow and Volume Measurement Requirements

B(2.) Volume of Water Obtained from Grizzly, Little, Falcon, Thinner and Sable Lakes

Lake Name	Current Month (m ³)	Year to Date (m ³)
Grizzly Lake	7,319	22,030
Little Lake	0	0
Falcon Lake	0	0
Thinner Lake	0	0

Note: Sable Pit is in production and Sable Lake does not exist anymore

B(3.) Lake Level Elevation Metres above Sea Level

Lake Name	Lake Elevation (masl)
Grizzly Lake	Frozen
Little Lake	Frozen
Upper/North Panda Lake	Frozen
Falcon Lake	Frozen
Thinner Lake	Frozen
Cell E LLCF	447.75*
King Pond	Frozen

*Cell E lake elevation taken through ice.

B(4.) Source and Volume of Recycled Water Used

Plant	Source	Current Month (m ³)	Year to Date (m ³)
Process	LLCF	449,199	1,218,279

B(5.) Volume of Water or Waste Discharged to Containment Facilities

Location	Current Month (m ³)	Year to Date (m ³)
Into Long Lake Containment Facility		
Process Plant Liquids	580,188	1,650,811
Process Plant Solids	60,090	176,462
Minewater	0	22,791
Other Wastes	20	277
Into Beartooth Pit		
Minewater	0	0
Into Two Rock Sedimentation Pond		
Minewater	0	0
Other Wastes	0	0
Into King Pond Settling Facility		
Minewater	0	0
Other Wastes	0	0

Notes: "Other Wastes" include camp sumps not associated with minewater

B(6.) Volume of Water or Waste Discharged from Containment Facilities

Location	Current Month (m ³)	Year to Date (m ³)
From LLCF		
To Leslie Lake	0	0
For Road Watering	0	0
From King Pond		
To Cujo Lake	0	0
For Road Watering	0	0
From Two Rock Sedimentation Pond		
To Horseshoe Lake	0	0
For Road Watering	0	0

B(7.) Quantities of Minewater Pumped from each Open Pit and Underground Mines

Origin	Destination							
	LLCF (m ³)		Beartooth (m ³)		Two Rock (m ³)		King Pond (m ³)	
	Monthly	YTD	Monthly	YTD	Monthly	YTD	Monthly	YTD
Koala & Panda Pits	0	0						
Underground	0	22,791						
Pigeon Open Pit	0	0	0	0				
Beartooth Open Pit	0	0						
Misery & Lynx Pits							0	0
Sable Open Pit					0	0		
Total	0	22,791	0	0	0	0	0	0

Note: Quantities of underground mine water are recycled for use in the underground service water system. Total Underground Minewater includes water from Koala, Koala North, Panda and Misery Underground. YTD = Year to Date.

B(8.) and (9.) Quantity of Sewage Effluent Discharged and Sewage Solids Removed from the Sewage Treatment Plant (STP)

From STP	Current Month (m ³)	Year to Date (m ³)
Sewage Solids	200	657
Sewage Effluent	5,111	17,083

B(10.) Quantity of Sewage Delivered to STP from Sable and Pigeon Developments

Location Name	Current Month (m ³)	Year to Date (m ³)
Pigeon Development	1.55	4.5
Sable Development	1.55	4.5

B(12.) Quantity of Minewater Pumped from the Pigeon, Sable and Beartooth open pits

Please refer to Table B(7.) Quantities of Minewater Pumped from Open Pit and Underground Mines.

3. Part C. Other Monitoring Requirements

C(1.) Precipitation Data from Koala Met Station

Month	Precipitation (mm)	Year to Date (mm)
March	8.2	14.4

Note: Monthly adjusted values account for wind undercatch of the Geonor precipitation gauge as explained further in the 2016 Aquatic Effects Monitoring Report.

C(4.) Quantity of Ore Produced

Material (tonnes)	Current Month	Year to Date
Processed Ore	313,640	883,624

Note: Quantity reported represents all operating open pit and underground mines.

C(5a.) Quantity of Waste Rock and Coarse Processed Kimberlite Produced

Material (tonnes)	Current Month	Year to Date
Waste Rock Produced	1,821,744	5,182,076
Coarse Processed Kimberlite	108,329	328,709

Note: Quantities of coarse processed kimberlite and waste rock reported represents all operating open pits and underground mines.

C(5b.) Waste Rock Disposal Locations

Origin	Destination	Waste Rock Produced
Pigeon Pit	Pigeon WRSA	256,600
Lynx Pit	Lynx WRSA	91,172
Lynx Pit	Lynx Pit	227,018
Sable Pit	Sable South WRSA	1,221,658
Misery UG	Misery WRSA	25,296
March 2019 Total		1,821,744

Note: All values are in metric tonnes. This table summarizes waste rock from all active pits and underground mines. WRSA = Waste Rock Storage Area. Lynx Waste Rock is deposited in the Lynx Pit and in the Lynx WRSA.

Appendix A

Field Parameters for W2012L2-0001 Water Licence

Field Parameters

Station Point		1616-30a
Date Sampled		19-Mar-2019
Time Sampled		10:13
ALS Sample ID		L2246622-1
Parameter	Units	
Depth of Sample	m	2.5
pH Field	pH	6.82
Specific Conductivity Field	µs/cm	1383
Water Colour		Colourless
Water Temperature	°C	0.653
Air Temperature	°C	-10
Weather		Partly Cloudy
Wind Direction	Degrees	135
Wind Speed	km/hr	5

Field Parameters with Ecological Monitoring Requirements

Station Point		1616-29a-T	1616-29a-M	1616-28a-T	1616-28a-M
Date Sampled		24-Mar-2019	24-Mar-2019	26-Mar-2019	26-Mar-2019
Time Sampled		16:30	16:45	14:15	14:25
ALS Sample ID		L2250029-6	L2250029-5	L2250029-3	L2250029-2
Parameter					
Depth of Sample (m)	m	2	7.5	2	14
pH Field	pH	6.5	6.94	6.48	6.82
Specific Conductivity Field	µs/cm	1345	1352	1757	1752
Conductivity Field	µs/cm	727	736	930	942
Dissolved Oxygen	%	85	80.1	85.5	76.9
Dissolved Oxygen	mg/L	12.05	11.3	12.29	10.92
Redox Potential	mV	164.3	165.7	196	193.1
Water Colour		Colourless	Colourless	Colourless	Colourless
Water Temperature	°C	0.939	1.124	0.416	0.796
Air Temperature	°C	-15	-15	-10.7	-10.7
Weather		Overcast	Overcast	Partly Cloudy	Partly Cloudy
Wind Direction	Degrees	180	180	327	327
Wind Speed	km/hr	35	35	22	22

Appendix B

Analytical Results for W2012L2-0001 Water Licence

Client Sample ID		1616-30A
Date Sampled		19-Mar-2019
Time Sampled		10:13
ALS Sample ID		L2246622-1
Parameter	Units	Water
Physical Tests (Water)		
Hardness (as CaCO3)	mg/L	207
pH	pH	7.78
Total Suspended Solids	mg/L	<3.0
Anions and Nutrients (Water)		
Ammonia as N	mg/L	0.0709
Nitrate and Nitrite (as N)	mg/L	2.99
Nitrate (as N)	mg/L	2.99
Nitrite (as N)	mg/L	<0.0050
Total Kjeldahl Nitrogen	mg/L	0.688
Orthophosphate-Dissolved (as P)	mg/L	0.0016
Phosphorus (P)-Total Dissolved	mg/L	0.0023
Phosphorus (P)-Total	mg/L	0.0035
Silicate (as SiO2)	mg/L	<0.50
Organic / Inorganic Carbon (Water)		
Total Carbon	mg/L	20
Total Inorganic Carbon	mg/L	15.8
Total Organic Carbon	mg/L	4.2
Bacteriological Tests (Water)		
MPN - E. Coli	MPN/100mL	<1
MPN - Total Coliforms	MPN/100mL	<1
Dissolved Metals (Water)		
Calcium (Ca)-Dissolved	mg/L	42.9
Magnesium (Mg)-Dissolved	mg/L	24.3
Aggregate Organics (Water)		
Oil and Grease	mg/L	<5.0
Volatile Organic Compounds (Water)		
Benzene	mg/L	<0.00050
Ethylbenzene	mg/L	<0.00050
Toluene	mg/L	<0.00050
o-Xylene	mg/L	<0.00050
m+p-Xylene	mg/L	<0.00050
Xylenes	mg/L	<0.00071
TVH (C5-C10)	mg/L	<0.10
4-Bromofluorobenzene	%	92.4
3,4-Dichlorotoluene	%	111.2
1,4-Difluorobenzene	%	98.6
Hydrocarbons (Water)		
TEH (C10-C30)	mg/L	<0.25
TPH5-30	mg/L	<0.27
2-Bromobenzotrifluoride	%	106.1

Client Sample ID		1616-493	1616-29A-T	1616-29A-M	1616-121
Date Sampled		24-Mar-2019	24-Mar-2019	24-Mar-2019	24-Mar-2019
Time Sampled		11:05	16:30	16:45	16:47
ALS Sample ID		L2250029-7	L2250029-6	L2250029-5	L2250029-1
Parameter	Units	Water	Water	Water	Water
Physical Tests (Water)					
Total Suspended Solids	mg/L	<3.0	<3.0	<3.0	<3.0
Turbidity	NTU	<0.10	1.48	2.60	<0.10
Anions and Nutrients (Water)					
Alkalinity, Total (as CaCO3)	mg/L	<5.0	69.8	85.2	<5.0
Ammonia as N	mg/L	0.0166	0.0521	0.0445	0.0336
Bicarbonate (HCO3)	mg/L	<5.0	85.2	104	<5.0
Carbonate (CO3)	mg/L	<5.0	<5.0	<5.0	<5.0
Chloride (Cl)	mg/L	<0.50	237	237	<0.50
Conductivity (EC)	uS/cm	<2.0	1340	1340	<2.0
Fluoride (F)	mg/L	<0.020	<0.10	<0.10	<0.020
Hardness (as CaCO3)	mg/L	<1.0	231	233	<1.0
Hydroxide (OH)	mg/L	<5.0	<5.0	<5.0	<5.0
Ion Balance	%	Low TDS	97.1	96.6	Low TDS
Nitrate and Nitrite (as N)	mg/L	<0.0051	3.49	3	<0.0051
Nitrate (as N)	mg/L	<0.0050	3.48	3.00	<0.0050
Nitrite (as N)	mg/L	<0.0010	0.0059	<0.0050	<0.0010
Total Kjeldahl Nitrogen	mg/L	<0.050	0.507	0.567	0.059
pH	pH	5.03	7.91	7.96	5.49
Orthophosphate-Dissolved (as P)	mg/L	<0.0010	<0.0010	<0.0010	<0.0010
Phosphorus (P)-Total Dissolved	mg/L	<0.0020	<0.0020	<0.0020	<0.0020
Phosphorus (P)-Total	mg/L	<0.0020	<0.0020	0.0034	<0.0020
Silicate (as SiO2)	mg/L	<0.50	<0.50	<2.5	<0.50
TDS (Calculated)	mg/L	<1.0	801	805	<1.0
Sulfate (SO4)	mg/L	<0.30	227	222	<0.30
Organic / Inorganic Carbon (Water)					
Total Carbon	mg/L	<1.1	22.6	22	1.5
Total Inorganic Carbon	mg/L	<0.50	17.5	17.3	1.49
Total Organic Carbon	mg/L	<1.0	5.1	4.8	<1.0
Total Metals (Water)					
Aluminum (Al)-Total	mg/L	<0.0030	0.0102	0.0105	<0.0030
Antimony (Sb)-Total	mg/L	<0.00010	0.00114	0.00118	<0.00010
Arsenic (As)-Total	mg/L	<0.00010	0.00054	0.00053	<0.00010
Barium (Ba)-Total	mg/L	<0.00010	0.0981	0.101	<0.00010
Beryllium (Be)-Total	mg/L	<0.00010	<0.00010	<0.00010	<0.00010
Boron (B)-Total	mg/L	<0.010	0.038	0.037	<0.010
Cadmium (Cd)-Total	mg/L	<0.0000050	0.0000602	0.0000581	<0.0000050
Calcium (Ca)-Total	mg/L	<0.050	52.3	54.1	<0.050
Chromium (Cr)-Total	mg/L	<0.00010	0.00016	0.00016	<0.00010
Cobalt (Co)-Total	mg/L	<0.00010	<0.00010	<0.00010	<0.00010
Copper (Cu)-Total	mg/L	<0.00050	0.00120	0.00121	<0.00050
Iron (Fe)-Total	mg/L	<0.010	<0.010	<0.010	<0.010
Lead (Pb)-Total	mg/L	<0.000050	<0.000050	<0.000050	<0.000050
Lithium (Li)-Total	mg/L	<0.0010	0.0075	0.0070	<0.0010
Magnesium (Mg)-Total	mg/L	<0.0050	27.3	28.1	<0.0050
Manganese (Mn)-Total	mg/L	<0.00010	0.00324	0.00358	<0.00010
Mercury (Hg)-Total	mg/L	<0.0000050	<0.0000050	<0.0000050	<0.0000050
Molybdenum (Mo)-Total	mg/L	0.000212	0.110	0.112	<0.000050
Nickel (Ni)-Total	mg/L	<0.00050	0.00446	0.00454	<0.00050
Potassium (K)-Total	mg/L	<0.050	50.4	52.4	<0.050
Selenium (Se)-Total	mg/L	<0.000050	0.000477	0.000500	<0.000050
Silicon (Si)-Total	mg/L	<0.10	0.17	0.22	<0.10

Client Sample ID		1616-493	1616-29A-T	1616-29A-M	1616-121
Date Sampled		24-Mar-2019	24-Mar-2019	24-Mar-2019	24-Mar-2019
Time Sampled		11:05	16:30	16:45	16:47
ALS Sample ID		L2250029-7	L2250029-6	L2250029-5	L2250029-1
Parameter	Units	Water	Water	Water	Water
Silver (Ag)-Total	mg/L	<0.000010	<0.000010	<0.000010	<0.000010
Sodium (Na)-Total	mg/L	0.140	171	176	<0.050
Strontium (Sr)-Total	mg/L	<0.00020	1.05	1.08	<0.00020
Thallium (Tl)-Total	mg/L	<0.000010	0.000037	0.000037	<0.000010
Tin (Sn)-Total	mg/L	<0.00010	<0.00010	<0.00010	<0.00010
Titanium (Ti)-Total	mg/L	<0.00030	<0.00030	<0.00030	<0.00030
Uranium (U)-Total	mg/L	<0.000010	0.000936	0.000934	<0.000010
Vanadium (V)-Total	mg/L	<0.00050	0.00052	0.00054	<0.00050
Zinc (Zn)-Total	mg/L	<0.0030	<0.0030	<0.0030	<0.0030
Dissolved Metals (Water)					
Dissolved Metals Filtration Location	-	LAB	LAB	LAB	LAB
Calcium (Ca)-Dissolved	mg/L	<0.10	48.2	48.3	<0.10
Magnesium (Mg)-Dissolved	mg/L	<0.10	26.8	27.3	<0.10
Potassium (K)-Dissolved	mg/L	<0.50	46.5	46.8	<0.50
Sodium (Na)-Dissolved	mg/L	<1.0	158	159	<1.0

Client Sample ID		1616-494	1616-28A-T	1616-288	1616-28A-M
Date Sampled		24-Mar-2019	26-Mar-2019	26-Mar-2019	26-Mar-2019
Time Sampled		16:48	14:15	14:20	14:25
ALS Sample ID		L2250029-8	L2250029-3	L2250029-4	L2250029-2
Parameter	Units	Water	Water	Water	Water
Physical Tests (Water)					
Total Suspended Solids	mg/L	<3.0	<3.0	<3.0	<3.0
Turbidity	NTU	<0.10	0.70	0.85	1.58
Anions and Nutrients (Water)					
Alkalinity, Total (as CaCO3)	mg/L	<5.0	78.9	75.9	63.5
Ammonia as N	mg/L	0.0150	0.126	0.131	0.140
Bicarbonate (HCO3)	mg/L	<5.0	96.3	92.6	77.5
Carbonate (CO3)	mg/L	<5.0	<5.0	<5.0	<5.0
Chloride (Cl)	mg/L	<0.50	318	318	320
Conductivity (EC)	uS/cm	<2.0	1700	1730	1710
Fluoride (F)	mg/L	<0.020	<0.10	<0.10	<0.10
Hardness (as CaCO3)	mg/L	<1.0	344	344	355
Hydroxide (OH)	mg/L	<5.0	<5.0	<5.0	<5.0
Ion Balance	%	Low TDS	96.1	95.9	98.4
Nitrate and Nitrite (as N)	mg/L	<0.0051	6.67	6.6	6.63
Nitrate (as N)	mg/L	<0.0050	6.64	6.57	6.63
Nitrite (as N)	mg/L	<0.0010	0.0250	0.0226	<0.0050
Total Kjeldahl Nitrogen	mg/L	<0.050	0.573	0.627	0.618
pH	pH	5.46	7.85	7.91	7.83
Orthophosphate-Dissolved (as P)	mg/L	<0.0010	<0.0010	<0.0010	<0.0010
Phosphorus (P)-Total Dissolved	mg/L	0.0021	<0.0020	<0.0020	<0.0020
Phosphorus (P)-Total	mg/L	<0.0020	0.0031	<0.0020	<0.0020
Silicate (as SiO2)	mg/L	<0.50	1.73	1.75	2.00
TDS (Calculated)	mg/L	<1.0	1050	1050	1050
Sulfate (SO4)	mg/L	<0.30	297	296	297
Organic / Inorganic Carbon (Water)					
Total Carbon	mg/L	<1.1	19.8	19.1	18.7
Total Inorganic Carbon	mg/L	<0.50	15.9	14.9	15.0
Total Organic Carbon	mg/L	<1.0	3.9	4.2	3.6
Total Metals (Water)					
Aluminum (Al)-Total	mg/L	<0.0030	<0.0030	<0.0030	<0.0030
Antimony (Sb)-Total	mg/L	<0.00010	0.00186	0.00189	0.00183
Arsenic (As)-Total	mg/L	<0.00010	0.00142	0.00142	0.00132
Barium (Ba)-Total	mg/L	<0.00010	0.0971	0.0983	0.0939
Beryllium (Be)-Total	mg/L	<0.00010	<0.00010	<0.00010	<0.00010
Boron (B)-Total	mg/L	<0.010	0.043	0.042	0.041
Cadmium (Cd)-Total	mg/L	<0.0000050	0.0000867	0.0000965	0.0000882
Calcium (Ca)-Total	mg/L	<0.050	75.9	74.9	73.5
Chromium (Cr)-Total	mg/L	<0.00010	0.00021	0.00021	0.00021
Cobalt (Co)-Total	mg/L	<0.00010	<0.00010	<0.00010	<0.00010
Copper (Cu)-Total	mg/L	<0.00050	0.00050	0.00101	<0.00050
Iron (Fe)-Total	mg/L	<0.010	<0.010	<0.010	<0.010
Lead (Pb)-Total	mg/L	<0.000050	<0.000050	0.000057	<0.000050
Lithium (Li)-Total	mg/L	<0.0010	0.0103	0.0105	0.0101
Magnesium (Mg)-Total	mg/L	0.0076	43.2	42.8	41.4
Manganese (Mn)-Total	mg/L	<0.00010	0.00369	0.00356	0.00598
Mercury (Hg)-Total	mg/L	<0.0000050	<0.0000050	<0.0000050	<0.0000050
Molybdenum (Mo)-Total	mg/L	<0.000050	0.184	0.178	0.171
Nickel (Ni)-Total	mg/L	<0.00050	0.0141	0.0139	0.0137
Potassium (K)-Total	mg/L	<0.050	76.0	75.6	72.0
Selenium (Se)-Total	mg/L	<0.000050	0.000792	0.000850	0.000806
Silicon (Si)-Total	mg/L	<0.10	1.02	1.04	1.18

Client Sample ID		1616-494	1616-28A-T	1616-288	1616-28A-M
Date Sampled		24-Mar-2019	26-Mar-2019	26-Mar-2019	26-Mar-2019
Time Sampled		16:48	14:15	14:20	14:25
ALS Sample ID		L2250029-8	L2250029-3	L2250029-4	L2250029-2
Parameter	Units	Water	Water	Water	Water
Silver (Ag)-Total	mg/L	<0.000010	<0.000010	<0.000010	<0.000010
Sodium (Na)-Total	mg/L	0.060	201	198	189
Strontium (Sr)-Total	mg/L	0.00030	1.54	1.52	1.52
Thallium (Tl)-Total	mg/L	<0.000010	0.000035	0.000034	0.000032
Tin (Sn)-Total	mg/L	<0.00010	<0.00010	<0.00010	<0.00010
Titanium (Ti)-Total	mg/L	<0.00030	<0.00030	<0.00030	<0.00030
Uranium (U)-Total	mg/L	<0.000010	0.000945	0.000951	0.000945
Vanadium (V)-Total	mg/L	<0.00050	0.00122	0.00117	0.00114
Zinc (Zn)-Total	mg/L	<0.0030	<0.0030	<0.0030	<0.0030
Dissolved Metals (Water)					
Dissolved Metals Filtration Location	-	LAB	LAB	LAB	LAB
Calcium (Ca)-Dissolved	mg/L	<0.10	68.6	68.4	69.8
Magnesium (Mg)-Dissolved	mg/L	<0.10	41.9	42.0	43.8
Potassium (K)-Dissolved	mg/L	<0.50	70.0	68.9	68.9
Sodium (Na)-Dissolved	mg/L	<1.0	181	179	180