



# **Strutt Lake Aggregate Pits**

## **ENGAGEMENT LOG**

**SNARE HYDROELECTRIC FACILITY  
NORTHWEST TERRITORIES**

**2019**

### DOCUMENT MAINTENANCE AND CONTROL

The Director, Health, Safety & Environment is responsible for the distribution, maintenance and updating of the Engagement Plan. This document will be reviewed annually, or when engagement practices are changed at the request of an engaged party. Changes in phone numbers, names of individuals, etc. that do not affect the intent of the plan are to be made as required. Additional copies can be provided by the Director, Health, Safety & Environment.

DOCUMENT HISTORY				
Revision #	Revised Section(s)	Description of Revision	Prepared by	Issue Date
0	N/A	First Version	NTPC- HSE	Oct 2019

## TABLE OF CONTENTS

<b><u>SECTION</u></b>	<b><u>PAGE</u></b>
1 INTRODUCTION.....	1
1.1 FACILITY .....	1
1.2 STRUTT LAKE AGGREGATE PITS.....	1
1.3 CORPORATE CONTACT INFORMATION.....	4
2 LICENCE RENEWAL APPLICATION ENGAGEMENT .....	5
2.1 PARTIES ENGAGED .....	5
3 ENGAGEMENT RECORD.....	6
3.1 ENGAGEMENT SUMMARY.....	6

## LIST OF TABLES

Table 2-1: Parties Engaged for the Strutt Lake Aggregate Pits .....	5
---	---

## FIGURES

**FIGURE 1.** SNARE HYDROELECTRIC SYSTEM MAP

**FIGURE 2.** MAP SHOWING WINTER ACCESS ROUTE TO STRUTT LAKE AGGREGATE PITS 1-3

## LIST OF APPENDICES

Appendix A- Notification Letter to All Stakeholders

# 1 INTRODUCTION

This Engagement Log provides a log of engagement activities for the Strutt Lake Aggregate Pits near Strutt Lake. Aggregate from the Strutt Lake Aggregate Pits will be mixed with fine sediment and used to upgrade approximately 17 km of gravel access road between the Falls and Forks Hydroelectric Developments at Snare Hydro. The general location of the borrow pits is shown in Figures 1 and 2.

## 1.1 FACILITY

The Snare Hydroelectric System is located on the Snare River, approximately 145 km northwest of Yellowknife, NT. The facility is operated by NTPC and comprises four power stations in cascade:

- Snare Rapids;
- Snare Falls;
- Snare Cascades, and
- Snare Forks.

Snare Rapids is the most upstream facility followed by Snare Falls, approximately 16 km downstream. The Snare Cascades station is located approximately 3 km downstream of Snare Falls while Snare Forks is located approximately 11 km downstream of Snare Cascades. The four hydroelectric sites and associated facilities are presented in Figure 1.

The Snare Hydroelectric Facility is the primary provider of power to the North Slave communities of Yellowknife, Behchokò, Dettah and N'Dilo along with the power generated by the Bluefish Hydroelectric Facility. The Snare Hydro System is connected to Yellowknife by a 144 km long transmission line operating at a voltage of 115 KV. With a 39km 115KV tie line that runs to Behchokò.

## 1.2 STRUTT LAKE AGGREGATE PITS

NTPC is applying for a Land Use Permit for the construction of a winter road across Strutt Lake to the existing gravel deposits. Much of the access road will be an ice road across Strutt Lake, however, there will be a short overland section required on the east side of the lake through an existing road. This portage is approximately 1.2 km long and was last used in 2011.

Approximately 14,000 m<sup>3</sup> of substrate will be excavated from the pits and used for coarse aggregate mix during upgrading of the existing road between Snare Falls and Snare Forks.

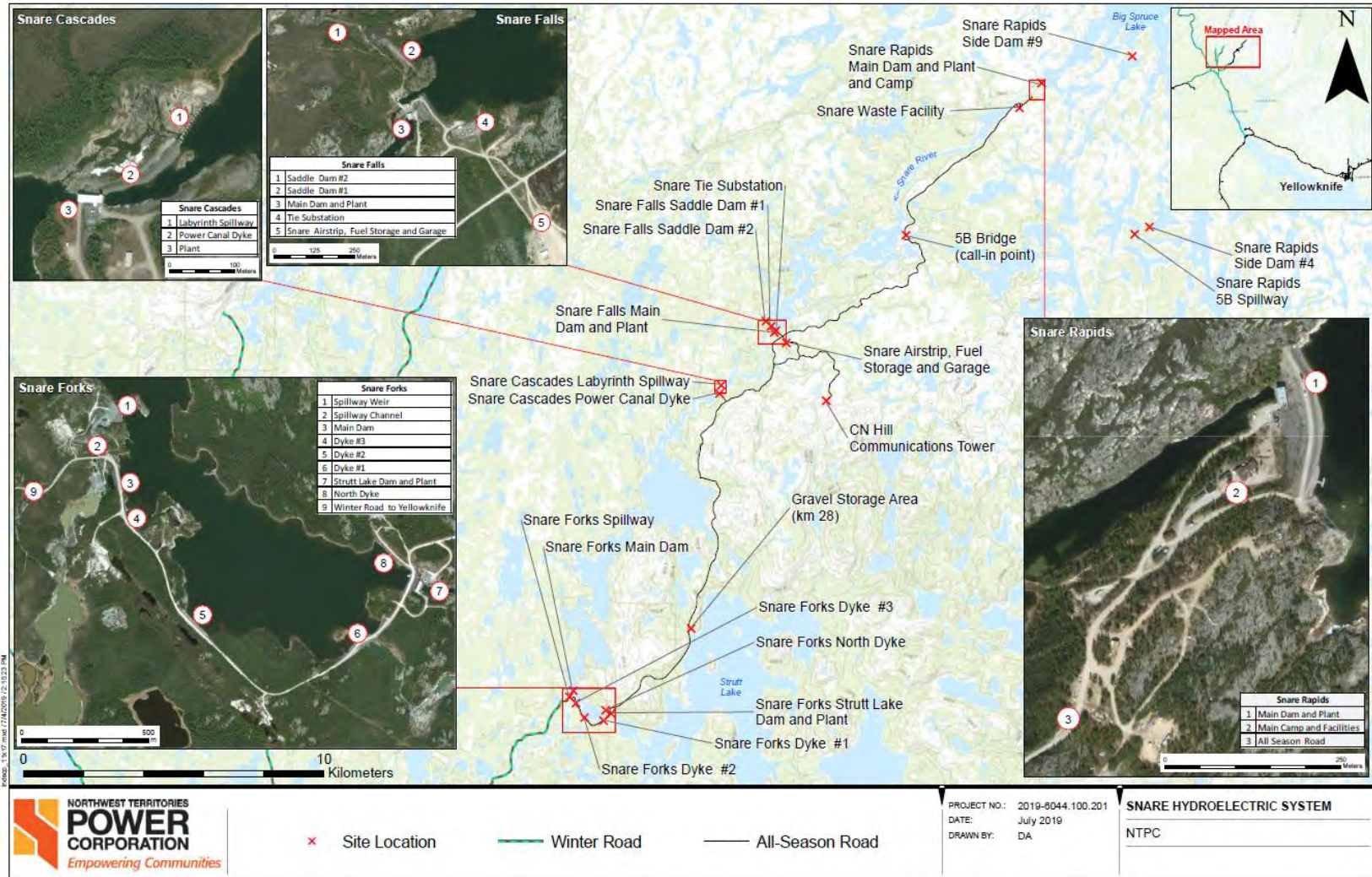


Figure 1: Snare hydroelectric system map.



Figure 2: Map showing winter access route to Strutt Lake Aggregate Pits 1-3

## 1.3 CORPORATE CONTACT INFORMATION

NTPC contact information for the Strutt Lake land-use permit is as follows:

Matthew Miller  
Senior Environmental Licensing Specialist  
4 Capital Drive  
Hay River, NWT X0E 1G2  
Tel: (867) 874-5314 [mmiller@ntpc.com](mailto:mmiller@ntpc.com)

Andrew Ellis  
Project Manager, Engineering  
4 Capital Drive  
Hay River, NWT X0E 1G2  
867-874-5231 [aellis@ntpc.com](mailto:aellis@ntpc.com)

Stuart Robinson  
Acting Manager Plant Operations  
Northwest Territories Power Corporation  
Hydro Region  
Yellowknife, NT. X1A 2P7  
(867) 669-3328 Email: [srobinson@ntpc.com](mailto:srobinson@ntpc.com)

## 2 LICENCE RENEWAL APPLICATION ENGAGEMENT

### 2.1 PARTIES ENGAGED

NTPC engaged with stakeholders regarding the extension request. NTPC contacted all parties listed in the Wek'èezhii Land and Water Board Wekeezhii WEST Pre-Submission Engagement Contact List which is provided in Table 2-1.

**Table 2-1: Parties Engaged for the Strutt Lake Aggregate Pits**

Contact	Organization
Michael Birlea	Tłıchǫ Government Department of Culture and Lands Protection
Jess Hurtubise	North Slave Métis Alliance
Jody Pellissey	Wek'èezhii Renewable Resources Board
Glen Mackay	GNWT – Prince of Wales Northern Heritage Centre
Scott Stewart	GNWT – Department of Lands
James Hodson	Wildlife Biologist, Environmental Assessment/Habitat Environment and Natural Resources



## 3 ENGAGEMENT RECORD

### 3.1 ENGAGEMENT SUMMARY

A summary of all engagement undertaken for the winter road extension is presented below.

1. On September 27, 2019 an email was sent out to all stakeholders listed in Table 2-1 with a notification letter regarding the NTPC's application to reinstate an expired Land-Use Permit to operate 3 existing gravel quarries and an 8km historic winter road near Strutt Lake, NWT to obtain material to resurface a section of the Snare Hydro all season site road. The notification letter is included as Appendix A.
2. On October 11, 2019 a follow up email was sent to all stakeholders listed in Table 2-1 with the notification letter attached again.

Feedback from stakeholders on the engagement email and letter and included:

- A response from Michael from the Tłı̄chǵ Government on October 15, 2019 stating "Thanks for the email. Please ensure that Violet and Tyanna are included" with both cc'd on the email.

NTPC always engaged with the Tłı̄chǵ Government to renew the Access Agreement and Quarry permit for the historic borrow pits. An application form and Reclamation Plan was submitted to the Tłı̄chǵ Government on October 24, 2019.

**APPENDIX A**

**NOTIFICATION LETTER TO ALL STAKEHOLDERS**

September, 2019

Wek' èezhii Land and Water Board  
Distribution List

**Notification of Application for Land Use Permit for Strutt Lake Gravel Quarries at Snare Hydro Facility**

Hello,

The Northwest Territories Power Corporation (NTPC) is applying to reinstate an expired Land-Use Permit to operate 3 existing gravel quarries and an 8km historic winter road near Strutt Lake, NWT. Strutt Lake is located east of the Snare Forks Hydro Facility as outlined in Figure 1. The location of the existing winter road and 3 existing gravel quarries is presented in Figure 2.

NTPC held Land-Use Permit W2012Q0004 from 2013 to 2016 to construct and operate the winter road and complete quarrying activities. NTPC is looking to reinstate the Land-Use Permit for the winter road and quarries to obtain material to resurface a section of the Snare Hydro all season site road. The all season site road is key piece of infrastructure for the Snare Hydroelectric Facility which is part of the North Slave Electric System that provides power to the City of Yellowknife, Ndilo, Dettah and Behchokò.

NTPC is planning on reconstructing the existing winter road and quarrying the material throughout the winter of 2019/2020.

If you have any questions regarding this application or if there is any further information we can provide please contact me at (867) 874 - 5314 or email [mmiller@ntpc.com](mailto:mmiller@ntpc.com).

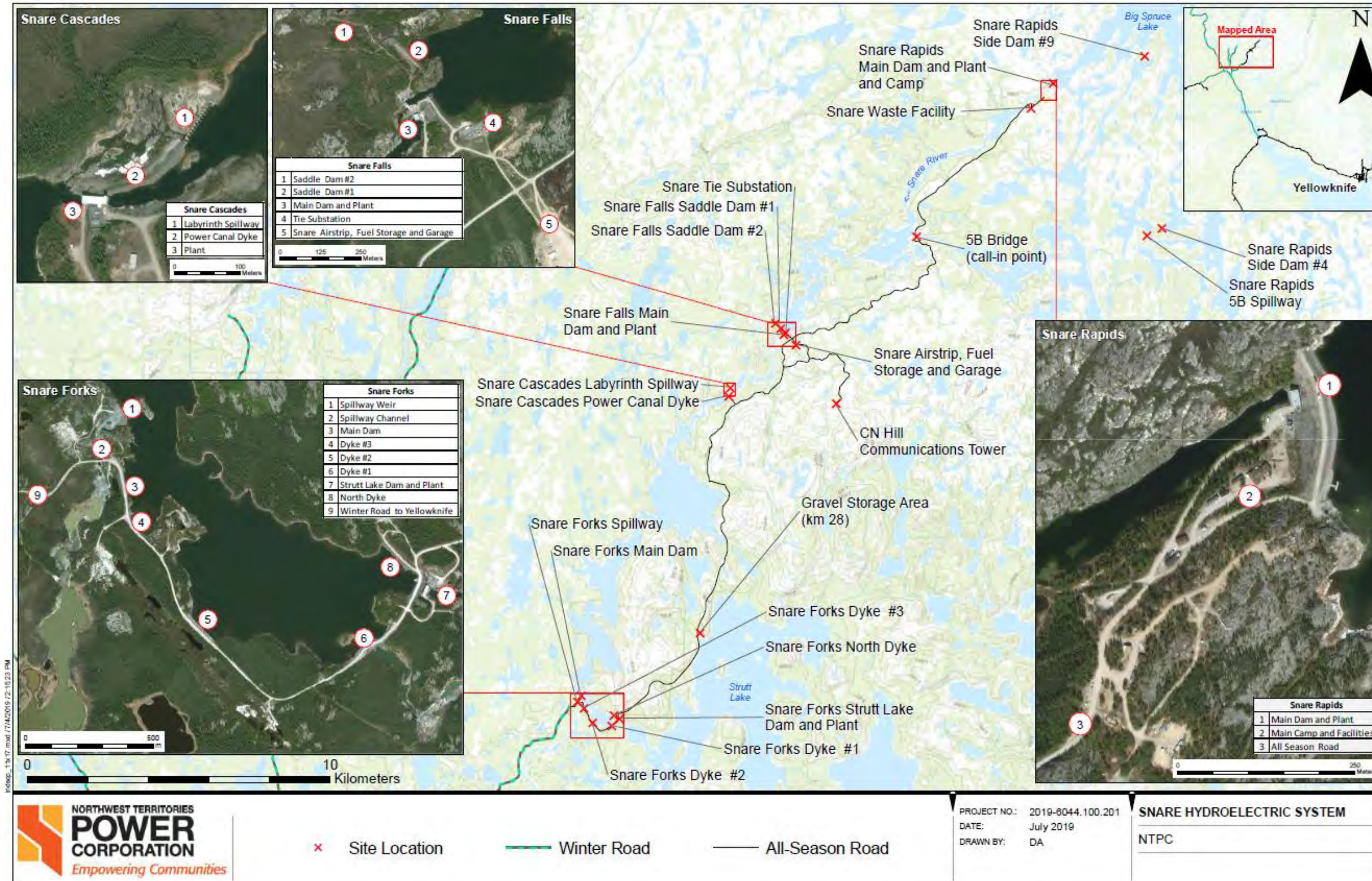
Sincerely,



Matthew Miller, M.Sc., P.Eng.  
Senior Environmental Licensing Specialist  
Northwest Territories Power Corporation

September, 2019

Figure 1: Snare Hydro Facility



September, 2019

Figure 2: Strutt Lake Gravel Quarries and Historic Winter Road at Snare Hydro Facility

