



Strutt Lake Aggregate and Till Pits

ENGAGEMENT PLAN

**SNARE HYDROELECTRIC FACILITY
NORTHWEST TERRITORIES**

2020

DOCUMENT MAINTENANCE AND CONTROL

The Director, Health, Safety & Environment is responsible for the distribution, maintenance and updating of the Engagement Plan. This document will be reviewed annually, or when engagement practices are changed at the request of an engaged party. Changes in phone numbers, names of individuals, etc. that do not affect the intent of the plan are to be made as required. Additional copies can be provided by the Director, Health, Safety & Environment.

DOCUMENT HISTORY				
Revision #	Revised Section(s)	Description of Revision	Prepared by	Issue Date
1	N/A	First Version	NTPC- HSE	Oct 2019
2	all	Addition of Snare Forks Till Pit Borrow Locations	NTPC- HSE	February 2020
3	Section 4.2	Updating Engagement Contact List	NTPC- HSE	May 2020

TABLE OF CONTENTS

<u>SECTION</u>	<u>PAGE</u>
1 INTRODUCTION.....	1
1.1 SNARE HYDRO FACILITY	1
1.2 STRUTT LAKE AGGREGATE PITS WINTER ROAD.....	2
1.3 SNARE FORKS TILL PITS.....	2
1.4 CORPORATE CONTACT INFORMATION.....	5
2 OBJECTIVES	6
3 OPERATIONAL ENGAGEMENT	7
4 LICENCE APPLICATION ENGAGEMENT	8
4.1 ENGAGEMENT TRIGGERS	8
4.2 PARTIES TO BE ENGAGED	10
5 FOLLOW-UP REPORTING	11
5.1 ENGAGEMENT RECORD	11
6 COMMUNICATING THE PLAN	12
7 PLAN REVIEW.....	13

LIST OF TABLES

Table 2-1: Engagement Objective and Commitments.....	6
Table 4-1: Engagement Structure for Strutt lake Aggregate Pits	9
Table 4-2: Parties to be Engaged.....	10

FIGURES

- FIGURE 1.** SNARE HYDROELECTRIC SYSTEM MAP
- FIGURE 2.** SNARE WINTER ROAD
- FIGURE 3.** SNARE FORKS TILL PIT BORROW LOCATIONS

1 INTRODUCTION

This Engagement Plan provides an engagement framework for the Strutt Lake Aggregate Pits near Strutt Lake.

Aggregate from the Strutt Lake Aggregate Pits will be mixed with fine sediment and used to upgrade approximately 17 km of gravel access road between the Falls and Forks Hydroelectric Developments at Snare Hydro. The general location of the borrow pits is shown in Figures 1 and 2.

Gravel production is intended to start in the winter of 2020. It will include stockpiling of approximately 14,000 m³ of material. The three aggregate pits will be accessed using an ice road over Strutt Lake, followed by an approximately 1.2 km portage through an already existing road used in 2006 to access the quarry. Gravel will be stockpiled alongside the Snare Road for blending and utilizing to resurface the road.

NTPC is required to gather input from stakeholders on the application package and to continue engagement throughout the term of the licence and permit. Engagement will provide an opportunity for stakeholders to contribute knowledge and solutions to the process, which is mutually beneficial to all parties involved.

This plan was developed through consideration of the Wek'eezhii Land and Water Board Engagement Guidelines for Applicants and Holders of Water Licences and Land Use Permits, and the MVLWB Engagement and Consultation Policy.

1.1 SNARE HYDRO FACILITY

The Snare Hydroelectric System is located on the Snare River, approximately 145 km northwest of Yellowknife, NT. The facility is operated by NTPC and comprises four power stations in cascade:

- Snare Rapids;
- Snare Falls;
- Snare Cascades, and
- Snare Forks.

Snare Rapids is the most upstream facility followed by Snare Falls, approximately 16 km downstream. The Snare Cascades station is located approximately 3 km downstream of Snare Falls while Snare Forks is located approximately 11 km downstream of Snare Cascades. The four hydroelectric sites and associated facilities are presented in Figure 1.

The Snare Hydroelectric Facility is the primary provider of power to the North Slave communities of Yellowknife, Behchokò, Dettah and N'Dilo along with the power generated by the Bluefish Hydroelectric Facility. The Snare Hydro System is connected to Yellowknife by a 144 km long transmission line operating at a voltage of 115 KV. With a 39km 115KV tie line that runs to Behchokò.

1.2 STRUTT LAKE AGGREGATE PITS WINTER ROAD

NTPC is applying for a Land Use Permit for the construction of a winter road across Strutt Lake to the existing gravel deposits. Much of the access road will be an ice road across Strutt Lake, however, there will be a short overland section required on the east side of the lake through an existing road. This portage is approximately 1.2 km long and was last used in 2011.

Approximately 14,000 m³ of substrate will be excavated from the pits and used for coarse aggregate mix during upgrading of the existing road between Snare Falls and Snare Forks.

1.3 SNARE FORKS TILL PITS

NTPC was issued Type A Land Use Permit W2019Q0003 in December 2019 and needs to amend the permit for some additional quarrying from historic till pits near the Snare Forks facility. No additional ice road construction or petroleum storage is required.

NTPC would like to amend the permit to include excavating approximately 3000m³ of till material from 2 historic borrow locations adjacent to the Snare Forks facility. The old borrow locations are on a historic runway that was used during the construction of the facility. The material will be used to repair one of the adjacent dams which requires resurfacing and reprofiling to ensure stability. Borrow locations are historic and minimal vegetation clearing will be required

.

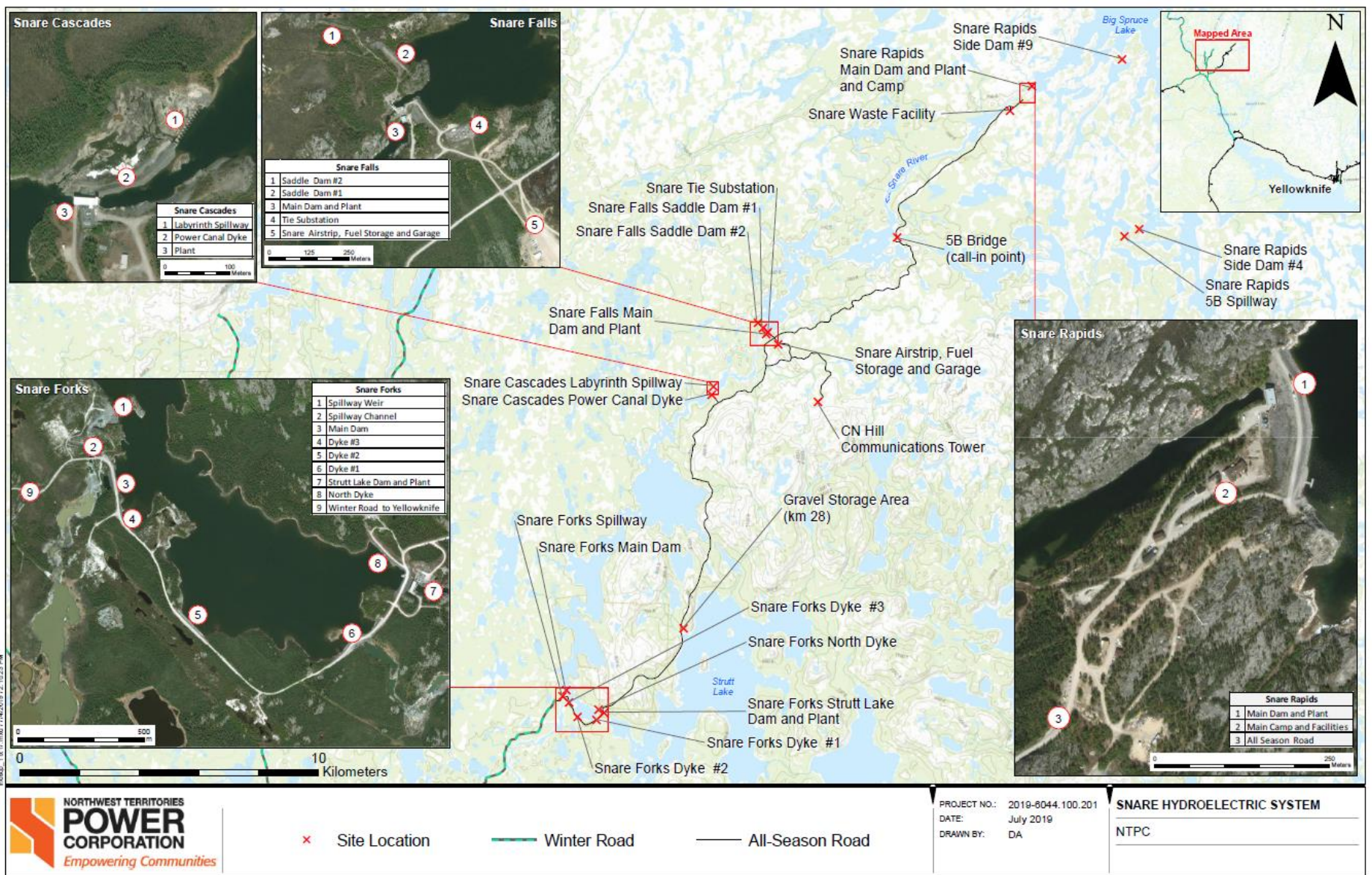


Figure 1: Snare hydroelectric system map.

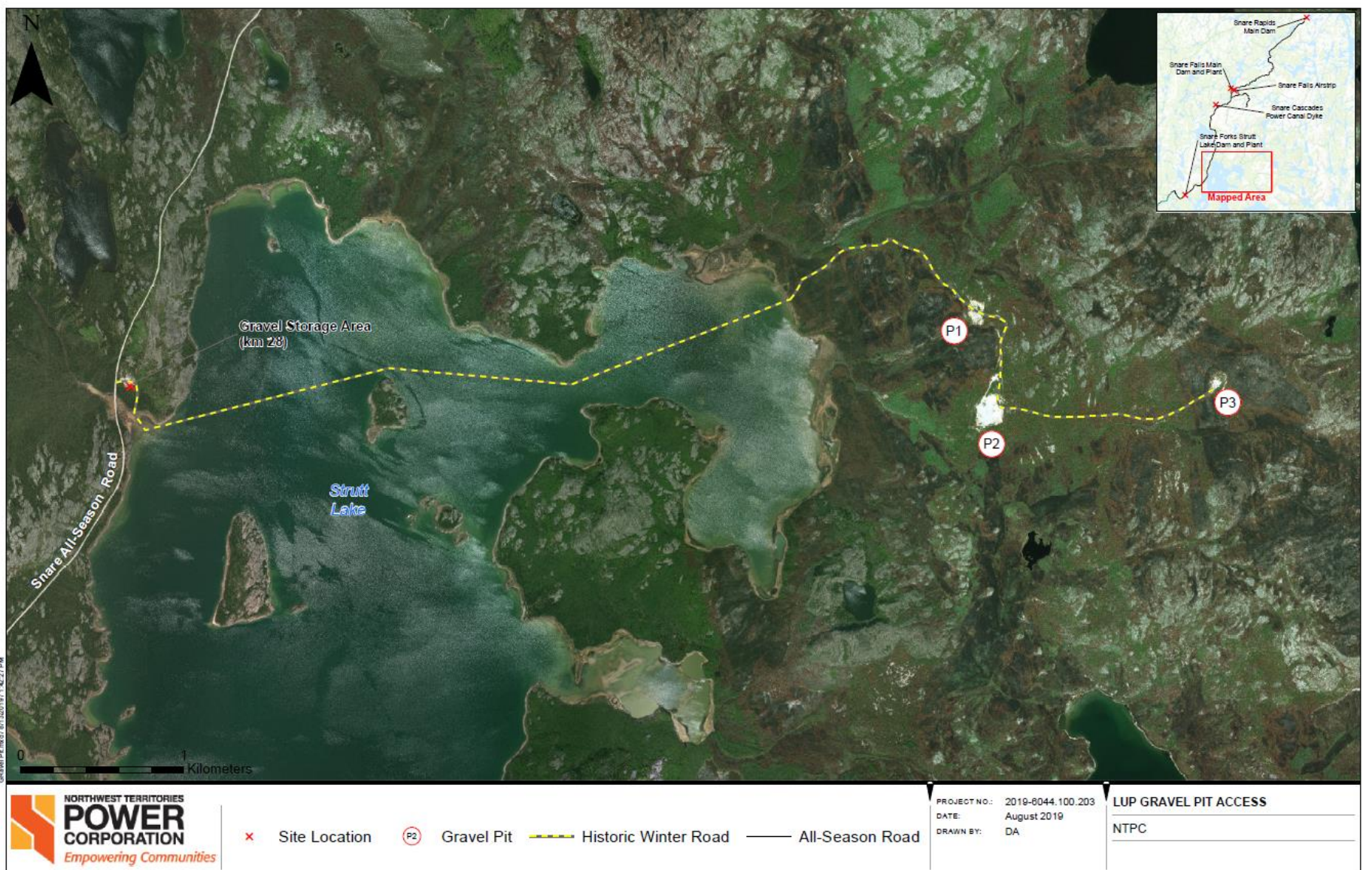


Figure 2. Map showing winter access route to Strutt Lake Aggregate Pits 1-3.



Figure 3. Snare Forks Till Pit Borrow Locations

1.4 CORPORATE CONTACT INFORMATION

NTPC contact information for the Strutt Lake land-use permit is as follows:

Matthew Miller
Senior Environmental Licensing Specialist
4 Capital Drive
Hay River, NWT X0E 1G2
Tel: (867) 874-5314 mmiller@ntpc.com

Andrew Ellis
Project Manager, Engineering
4 Capital Drive
Hay River, NWT X0E 1G2
867-874-5231 aellis@ntpc.com

Stuart Robinson
Acting Manager Plant Operations
Northwest Territories Power Corporation
Hydro Region
Yellowknife, NT. X1A 2P7
(867) 669-3328 Email: srobinson@ntpc.com

2 OBJECTIVES

Engagement, as defined by the Engagement and Consultation Policy of the Land and Water Boards of the Mackenzie Valley, is “the communication and outreach activities a proponent undertakes with affected parties prior to and during the operation of a project.” Engagement is required as part of the land-use permitting and water licensing process and the Boards require that proponents provide both an Engagement Record and an Engagement Plan as part of an application package.

Objectives of the engagement process are listed below along with NTPC’s commitment to fulfilling these objectives.

Table 2-1: Engagement Objective and Commitments

	Engagement Objectives	NTPC Commitment to the Public
1.	<p><u>Inform</u> by providing information to:</p> <ul style="list-style-type: none"> • Notify stakeholders of any issues/operational decisions. • Assist stakeholders in understanding the operation and issues that may arise. • Prepare stakeholders for more intensive forms of engagement should they be required. 	<ul style="list-style-type: none"> • Keep the public informed. • Proactive, timely communication. • Help stakeholders understand the undertaking.
2.	<p><u>Listen</u> to stakeholders and their feedback:</p> <ul style="list-style-type: none"> • Understand the needs and priorities of the stakeholders so that decisions can be made with these needs and priorities in mind. • Build cooperative and inclusive relationships. 	<ul style="list-style-type: none"> • Acknowledge when and how public input influenced decisions. • Understand views, concerns, interests and expectations.
3.	<p><u>Involve</u> work directly with stakeholders to jointly resolve issues</p>	<ul style="list-style-type: none"> • Acknowledge when and how concerns and aspirations are reflected in the design of the operation.

3 OPERATIONAL ENGAGEMENT

The engagement process for the Strutt Lake Aggregate Pits will follow the engagement framework laid out in the MVLWB Engagement and Consultation Policy (2013).

NTPC openly engages with the public regarding the Electrical System by:

- Providing information about electricity generation, transmission and distribution on the NTPC website (www.ntpc.com);
- Providing information about outages, safety, employment opportunities, community donations and other matters through:
 - NTPC Facebook page (<https://www.facebook.com/NTPC-Northwest-Territories-Power-Corporation-591764887576712/>);
 - Twitter (https://twitter.com/ntpc_news?lang=en);
 - Email alerts (<http://ntpc.com/safety-outages/outage-alert-signup>);
- Having NTPC staff attend trade shows, conferences and job fairs to engage directly with members of the public; and
- Placing paid advertising in the media (radio and print) to provide information about matters of public interest.

Public engagement regarding the Strutt Lake Aggregate Pits will employ the above practices of engagement as well.

4 LICENCE APPLICATION ENGAGEMENT

As part of the application process and throughout the life of the licence and permit some key tools employed in the engagement process are:

- Electronic mail (email);
- Phone conversations and teleconferences;
- In-person meetings with representatives of affected organizations, if requested;
- Community public meetings with affected communities, if requested.

4.1 ENGAGEMENT TRIGGERS

There are standard triggers at key milestones related to operations authorized under the permit that will trigger engagement. Table 4-1 presents the structure for engagement that includes the triggers, methods and expected dates for engagement. All engagement activities will be recorded in the Engagement Record and submitted to the WLWB.

Table 4-1: Engagement Structure for Strutt lake Aggregate Pits

Engagement Trigger	Purpose for Engagement	Organization to be Engaged	Format of Engagement	Approximate Date
Pre-Application Engagement	To inform parties of details of Type A Land-Use Permit for Strutt Lake Aggregate Pits and to accept input from public on application.	Refer to Table 4-2	Email with Notification letter outlining details for Strutt Lake Pits and Winter Road Land Use Permit Application.	September, October 2019
Application submitted to the WLWB	Inform parties of how to stay engaged through the WLWB process	Refer to Table 4-2	Email with link to the WLWB Public Registry site with the complete application	Application will be submitted by November 1, 2019
Ongoing engagement	Inform parties of ongoing operations	Refer to Table 4-2	As requested, including emails, phone calls and in-person meetings or information sessions	As required

4.2 PARTIES TO BE ENGAGED

NTPC has identified a number of aboriginal, municipal, territorial and federal governments and governmental organizations as parties to be engaged as part of the Strutt Lake Aggregate Pits in accordance with the WLWB - Wekeezhii WEST Pre-Submission Engagement Contact List. These parties and organizations are presented in Table 4-2.

Table 4-2: Parties to be Engaged

Organization
Tłı̄chǫ Government- Lands Regulation.
Tłı̄chǫ Government- Mines Liaison Coordinator
Tłı̄chǫ Government- Lands Protection
North Slave Métis Alliance
Wek'èezhii Renewable Resources Board
GNWT – Prince of Wales Northern Heritage Centre
GNWT – Department of Lands
Wildlife Biologist, Environmental Assessment/Habitat Environment and Natural Resources

5 FOLLOW-UP REPORTING

During engagement activities, NTPC will track comments, concerns or inputs, received relating to a permitted or licensed activity and will provide a summary as detailed in Section 4 above. In order to process comments, concerns and input throughout the engagement process, NTPC will endeavor to respond in a timely manner, respecting the nature of the input.

Reporting on an engagement after it has been completed is an important step in the engagement process. All Engagement Logs will acknowledge those that participated and will provide an accurate record of the engagement process, and how final decisions were reached.

5.1 ENGAGEMENT RECORD

A summary of all engagement undertaken for the Application is listed in the Engagement Record. The Engagement Record includes an entry for each engagement, including the following information:

- Date of engagement;
- Name of party or group;
- Format of engagement;
- Individuals attending;
- Issue or topic of discussion;
- Comments received by NTPC; and
- Description of issues that were jointly resolved or which remain outstanding.

6 COMMUNICATING THE PLAN

Communicating the Engagement Plan is an important element to the success of the engagement process. NTPC intends to use engagement methods already familiar to them but also recognizes that not all potentially affected parties are the same and that what might work for one particular group or individual may not be the best method of engagement for another. NTPC is open to applying methods that work best for a particular situation and affected party in order to keep lines of communication open, build rapport, and establish trust.

7 PLAN REVIEW

It is important that engagement efforts be monitored. Where a method does not appear to be effective or when the scope of importance of an issue changes, it will be necessary to modify the Engagement Plan. Evaluating the effectiveness of the engagement process is a fundamental part of the Engagement Plan as it is important to understand what was done well and what could be improved upon moving forward. NTPC and the affected parties will assess the effectiveness of its engagement efforts over the course of time and will make necessary changes on a case by case basis. Any revisions to the Engagement Plan will be forwarded to the WLWB.