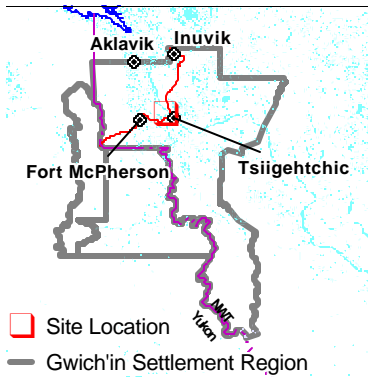


Project Description Map 1

Permit Number:
G02J007

Activity Location:
-133.779, 67.44



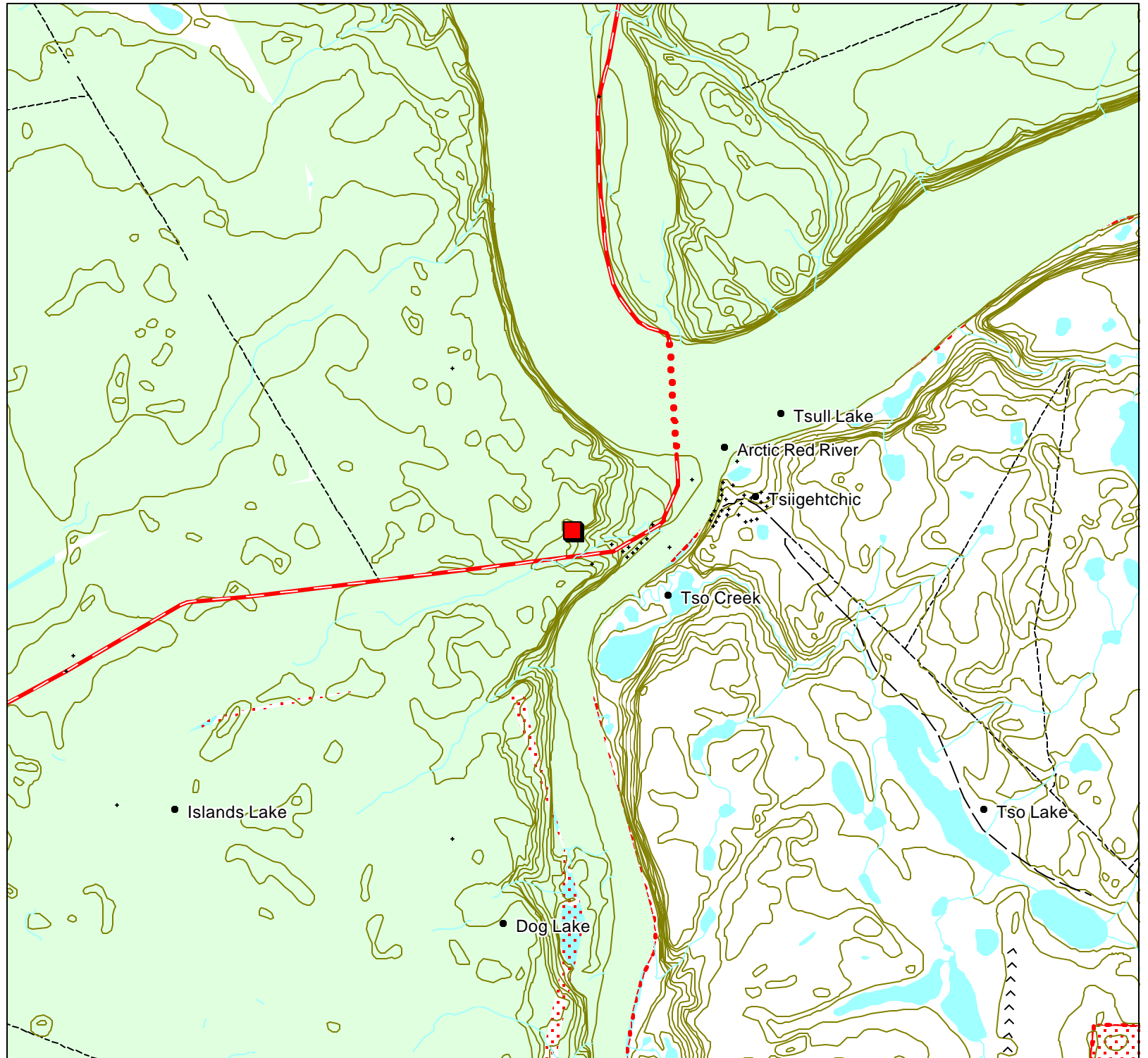
Map Scale: 1:50,000



Map Extent:
Top Left: -133.904, 67.4847
Bottom Right: -133.654, 67.3953

Map Projection:
Longitude / Latitude (NAD 27 f-
or Canada)

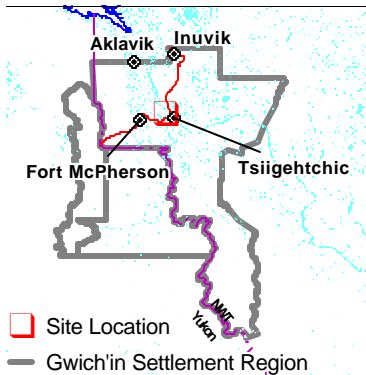
Creation Date: May 31, 2002
Modification Date: May 31, 2002



Development Activity Map 3

Permit Number:
G02J007

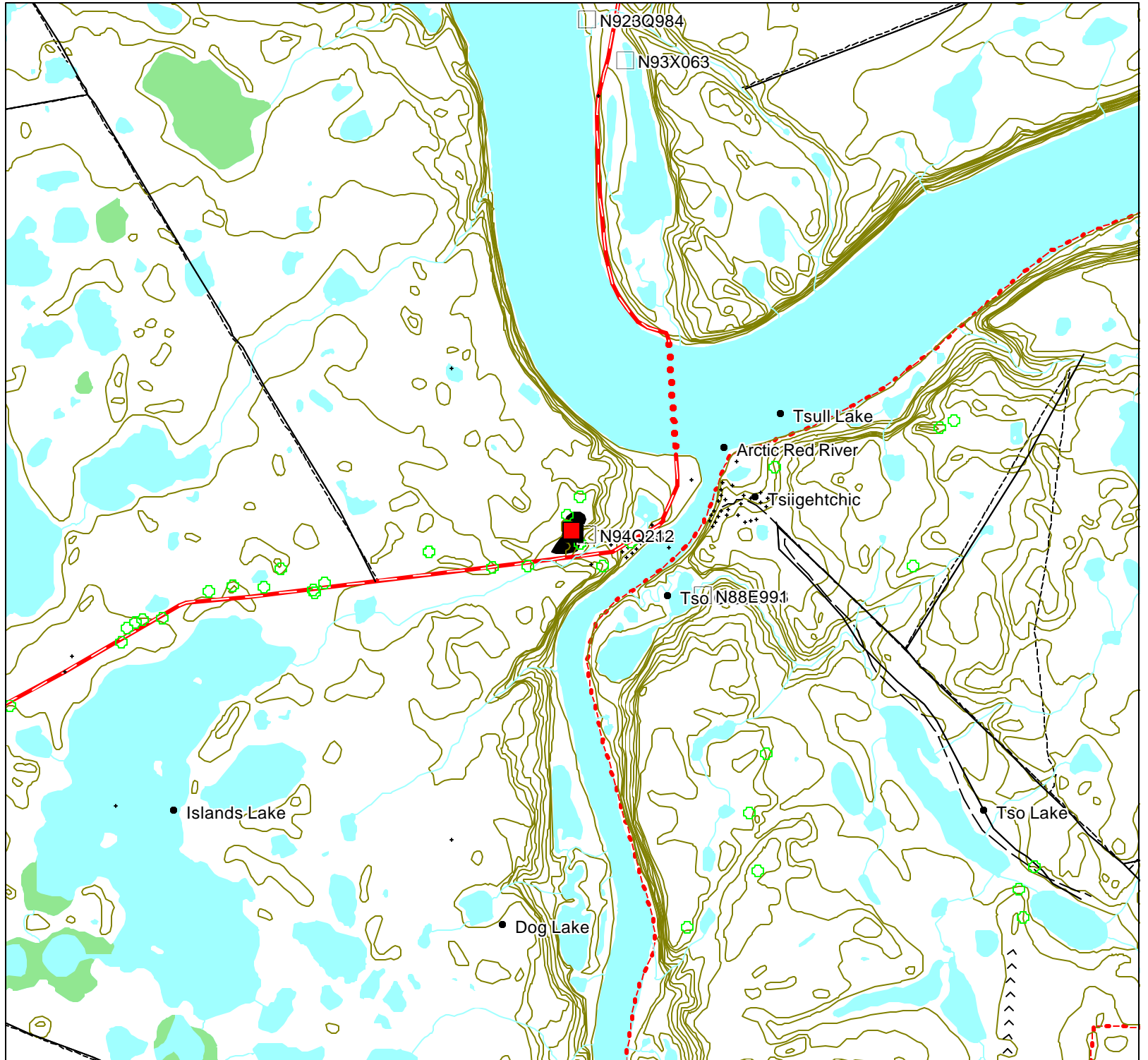
Activity Location:
-133.779, 67.44



Map Scale: 1:50,000

Map Extent:
Top Left: -133.904, 67.4847
Bottom Right: -133.654, 67.3953

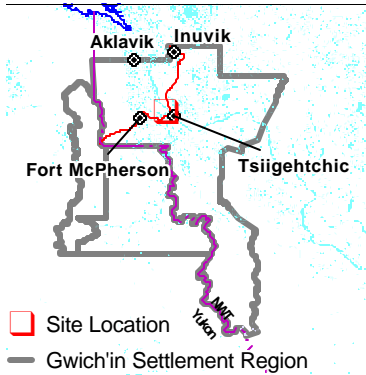
Map Projection:
Longitude / Latitude (NAD 27 f-
or Canada)
Creation Date: May 31, 2002
Modification Date: May 31, 2002



Traditional Use Map 4

Permit Number:
G02J007

Activity Location:
-133.779, 67.44



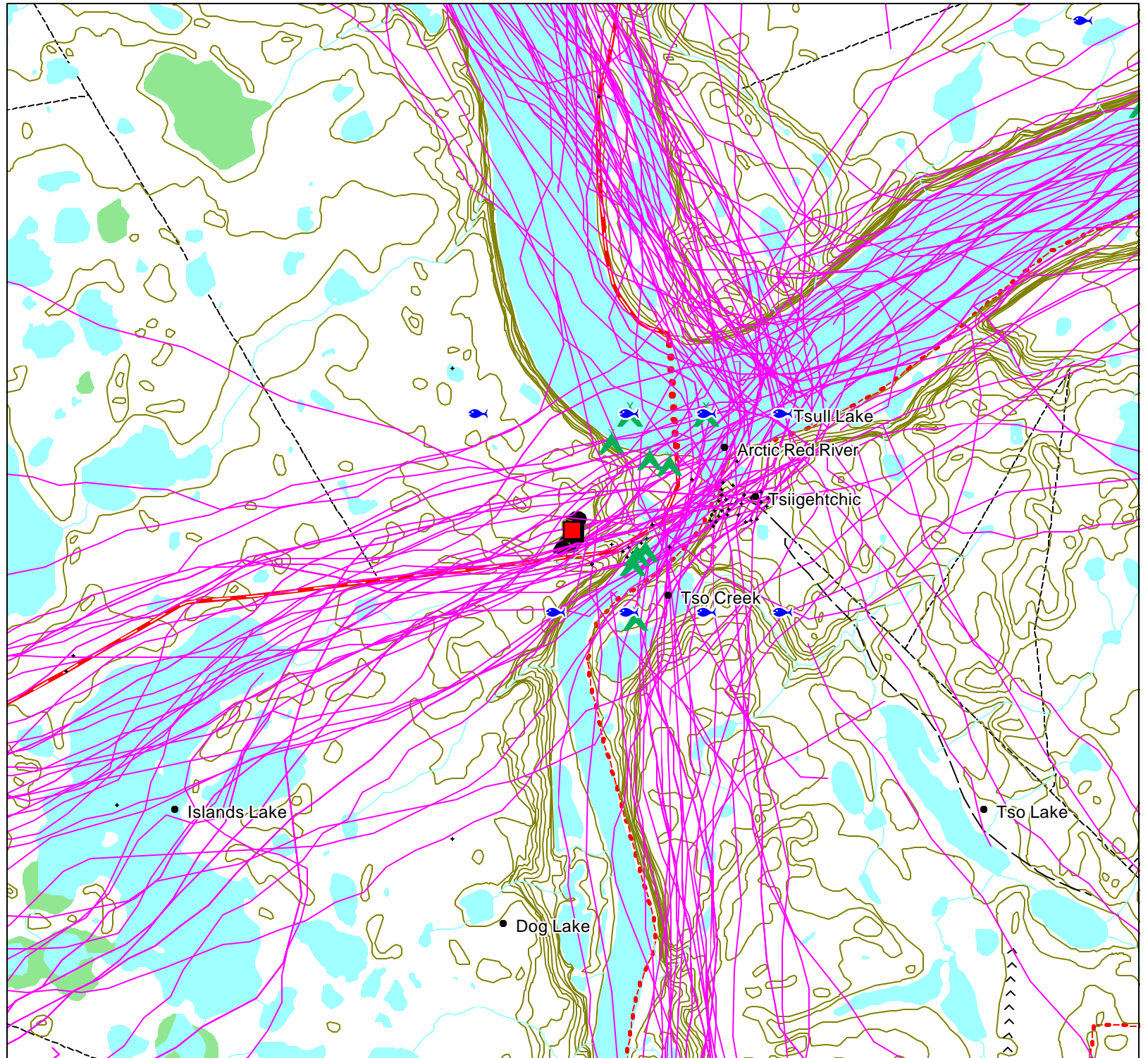
Map Scale: 1:50,000



Map Extent:
Top Left: -133.904, 67.4847
Bottom Right: -133.654, 67.3953
















Map Projection:
Longitude / Latitude (NAD 27 f-
or Canada)



Creation Date: May 31, 2002
Modification Date: May 31, 2002



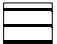


Permit Map Series Legend

Point Layers

-  Activity Location
-  CHIN Heritage and Archeological Sites
-  DFO Fisheries Studies
-  DIAND Boreholes Exploration
-  DIAND Licenses
-  DOT Granular Resources Inventory
-  Env Canada Stream Gauging Stations
-  GSC Mineral Showings
-  GSC Wells
-  Gwich'in Cabins
-  NTDB Contour Lines
-  NWT Mineral Showings
-  NWT Wells
-  NWT/Yukon Placename
-  Rwed Cabins

-  RWED Land Permits
-  Yukon Mineral Showings

-  NTDB Water Bodies
-  NTDB Wetlands
-  RWED Forest Inventory

Line Layers

-  Dempster Highway
-  Dene Traditional Trails
-  NTDB Cutlines
-  Town Boundaries

Region Layers

-  GLUPB Proposed Protected Areas
-  GLUPB Special Management Areas
-  Grand River Resource Blocks
-  Gwich'in Harvest Boundaries
-  Gwich'in Parcels
-  Gwich'in Territorial Park
-  NTDB Sand/Gravel