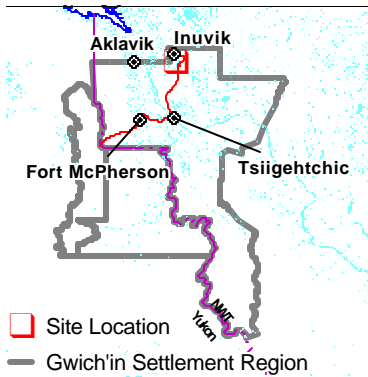


# Development Activity Map 3

Permit Number:  
g02q006

Activity Location:  
-133.424, 68.1733



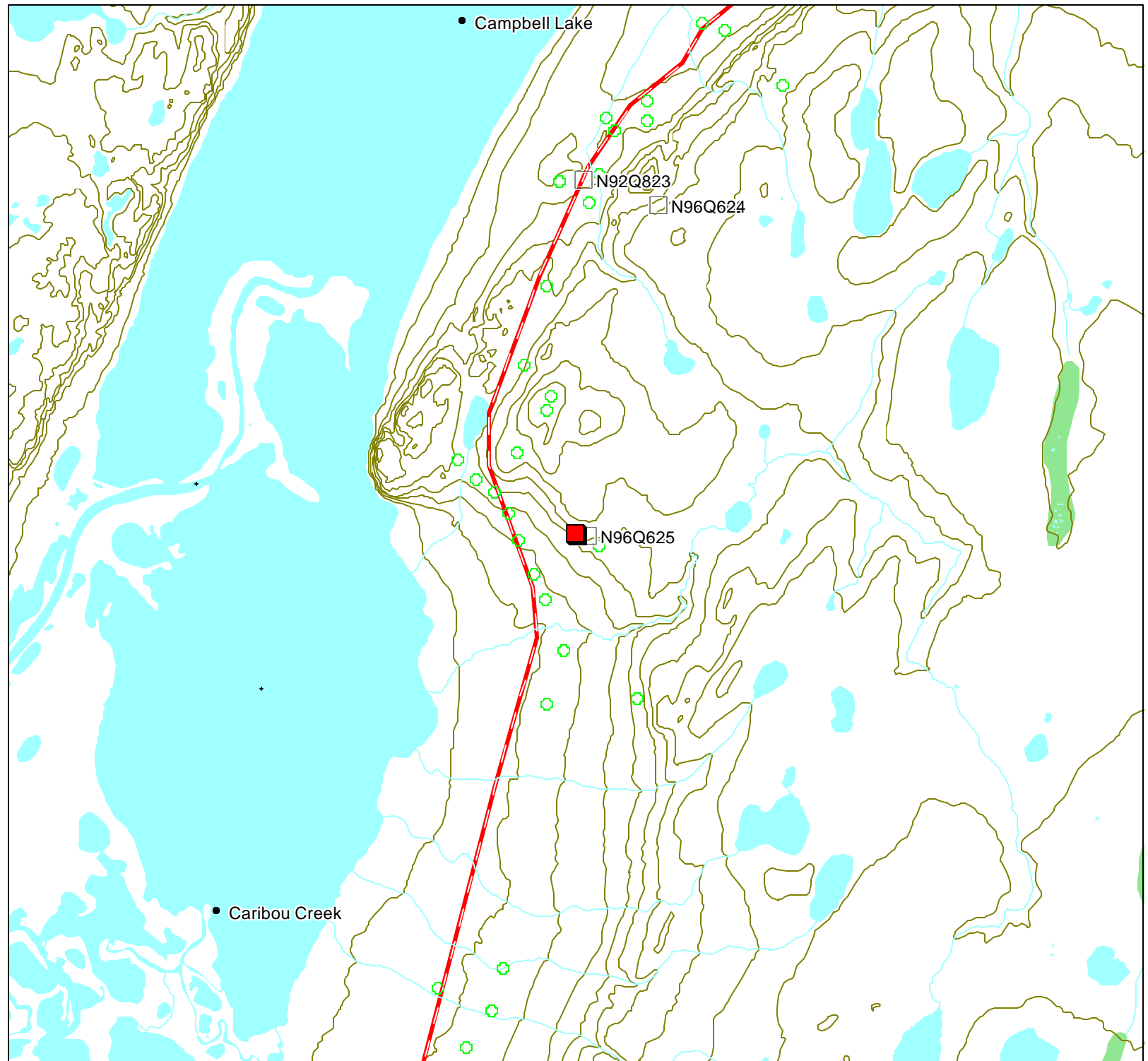
Map Scale: 1:50,000



Map Extent:  
Top Left: -133.553, 68.218  
Bottom Right: -133.295, 68.1286

Map Projection:  
Longitude / Latitude (NAD 27 f-  
or Canada)

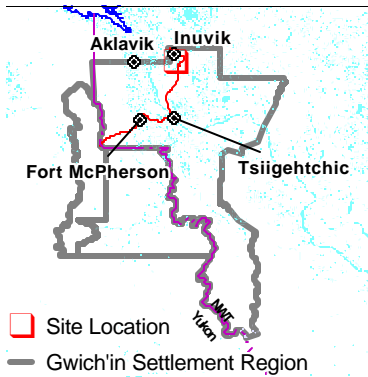
Creation Date: May 31, 2002  
Modification Date: May 31, 2002



# Project Description Map 1

Permit Number:  
g02q006

Activity Location:  
-133.424, 68.1733



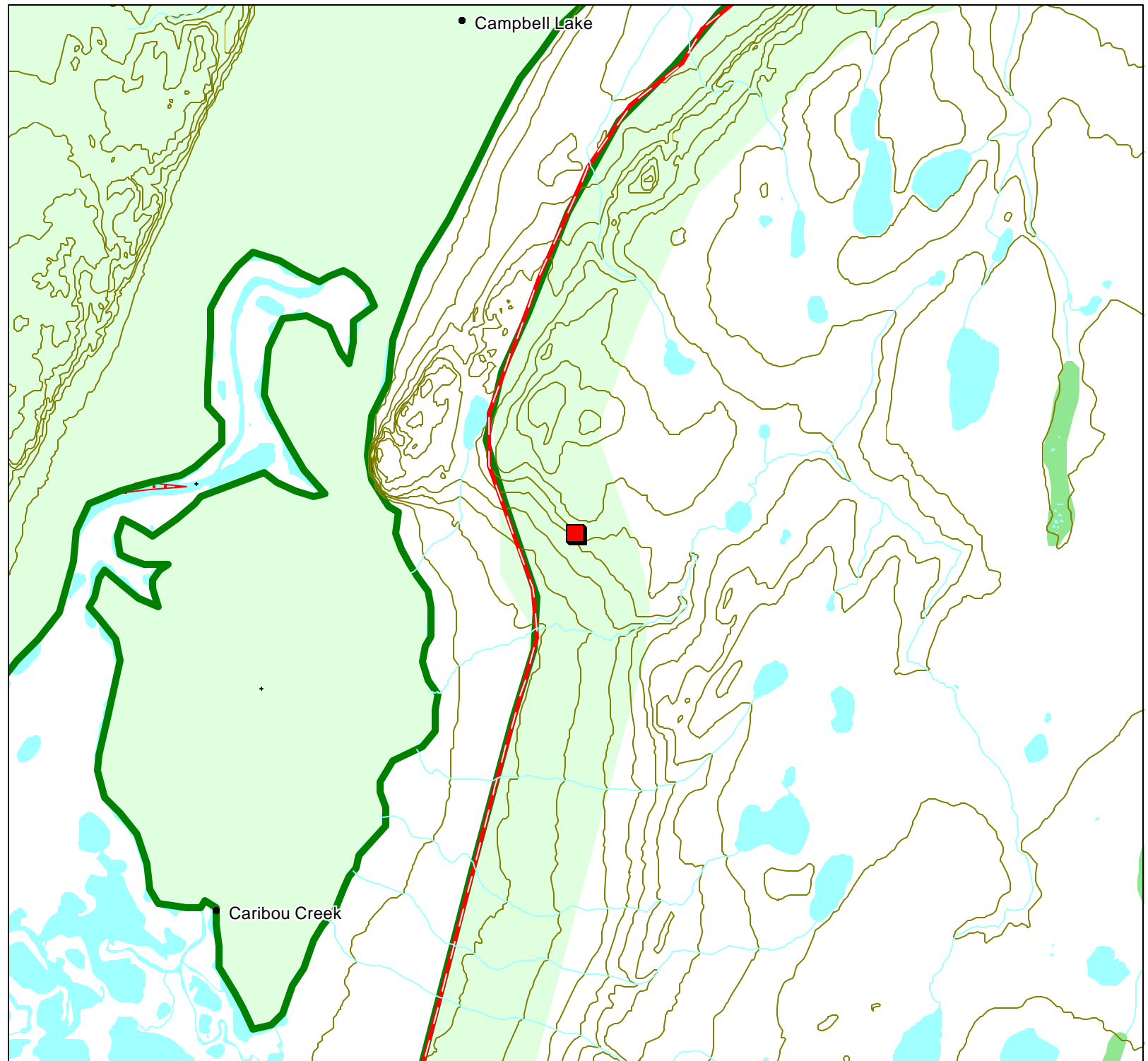
Map Scale: 1:50,000



Map Extent:  
Top Left: -133.553, 68.218  
Bottom Right: -133.295, 68.1286

Map Projection:  
Longitude / Latitude (NAD 27 f-  
or Canada)

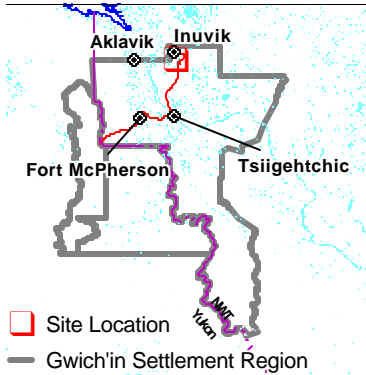
Creation Date: May 31, 2002  
Modification Date: May 31, 2002



# Traditional Use Map 4

Permit Number:  
g02q006

Activity Location:  
-133.424, 68.1733



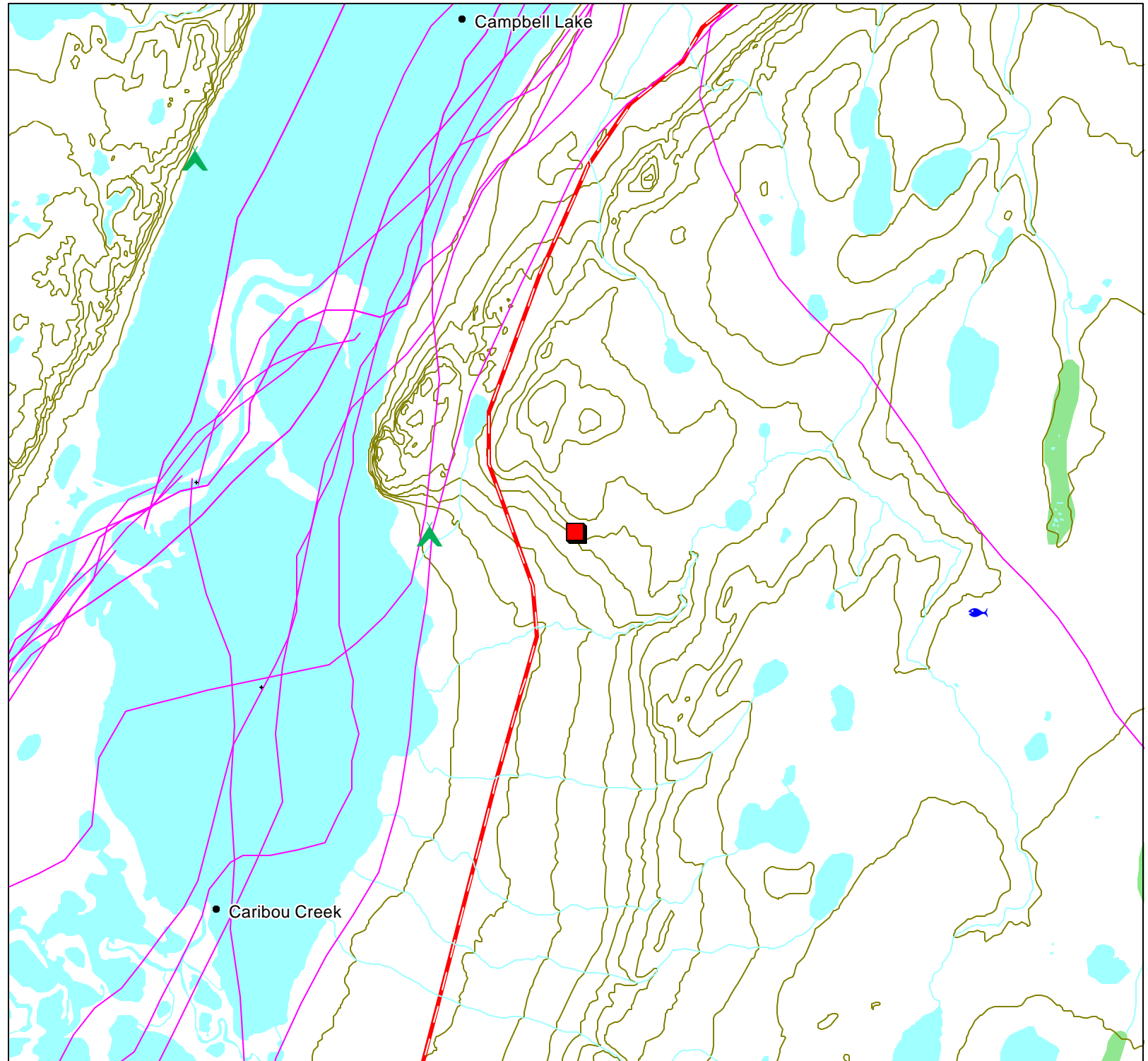
Map Scale: 1:50,000



Map Extent:  
Top Left: -133.553, 68.218  
Bottom Right: -133.295, 68.1286
















Map Projection:  
Longitude / Latitude (NAD 27 f-  
or Canada)



Creation Date: May 31, 2002  
Modification Date: May 31, 2002



# Permit Map Series Legend

## Point Layers


-  Activity Location
-  CHIN Heritage and Archeological Sites
-  DFO Fisheries Studies
-  DIAND Boreholes Exploration
-  DIAND Licenses
-  DOT Granular Resources Inventory
-  Env Canada Stream Gauging Stations
-  GSC Mineral Showings
-  GSC Wells
-  Gwich'in Cabins
-  NTDB Contour Lines
-  NWT Mineral Showings
-  NWT Wells
-  NWT/Yukon Placename
-  Rwed Cabins

-  RWED Land Permits
-  Yukon Mineral Showings




 NTDB Water Bodies

 NTDB Wetlands

 RWED Forest Inventory

 Town Boundaries

## Line Layers

-  Dempster Highway
-  Dene Traditional Trails
-  NTDB Cutlines

## Region Layers

-  GLUPB Proposed Protected Areas
-  GLUPB Special Management Areas
-  Grand River Resource Blocks
-  Gwich'in Harvest Boundaries
-  Gwich'in Parcels
-  Gwich'in Territorial Park
-  NTDB Sand/Gravel