

Clearing Info for Storage Area B

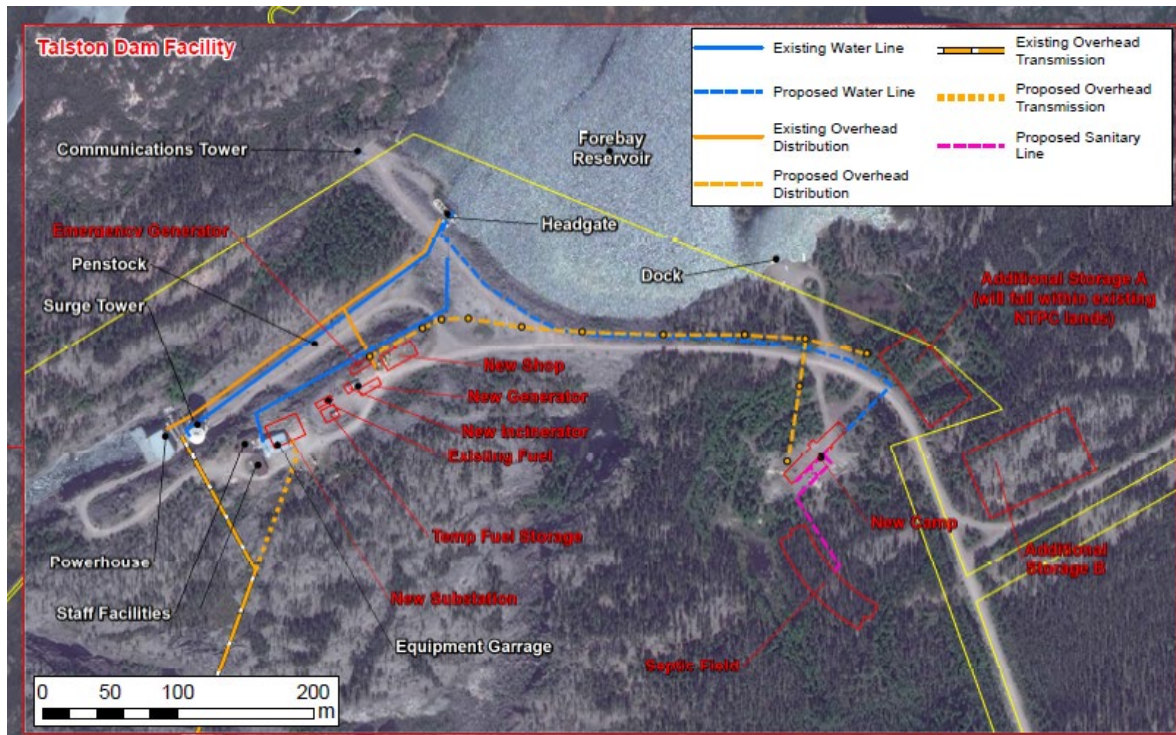
Vegetation clearing will take place for Storage Area B. Work must be completed in accordance with the conditions with the Taltson Overhaul - Type A Land Use Permit- MV2020X0004 and approved management plans such as Construction, Wildlife Management and Reclamation Plan.

A few key requirements :

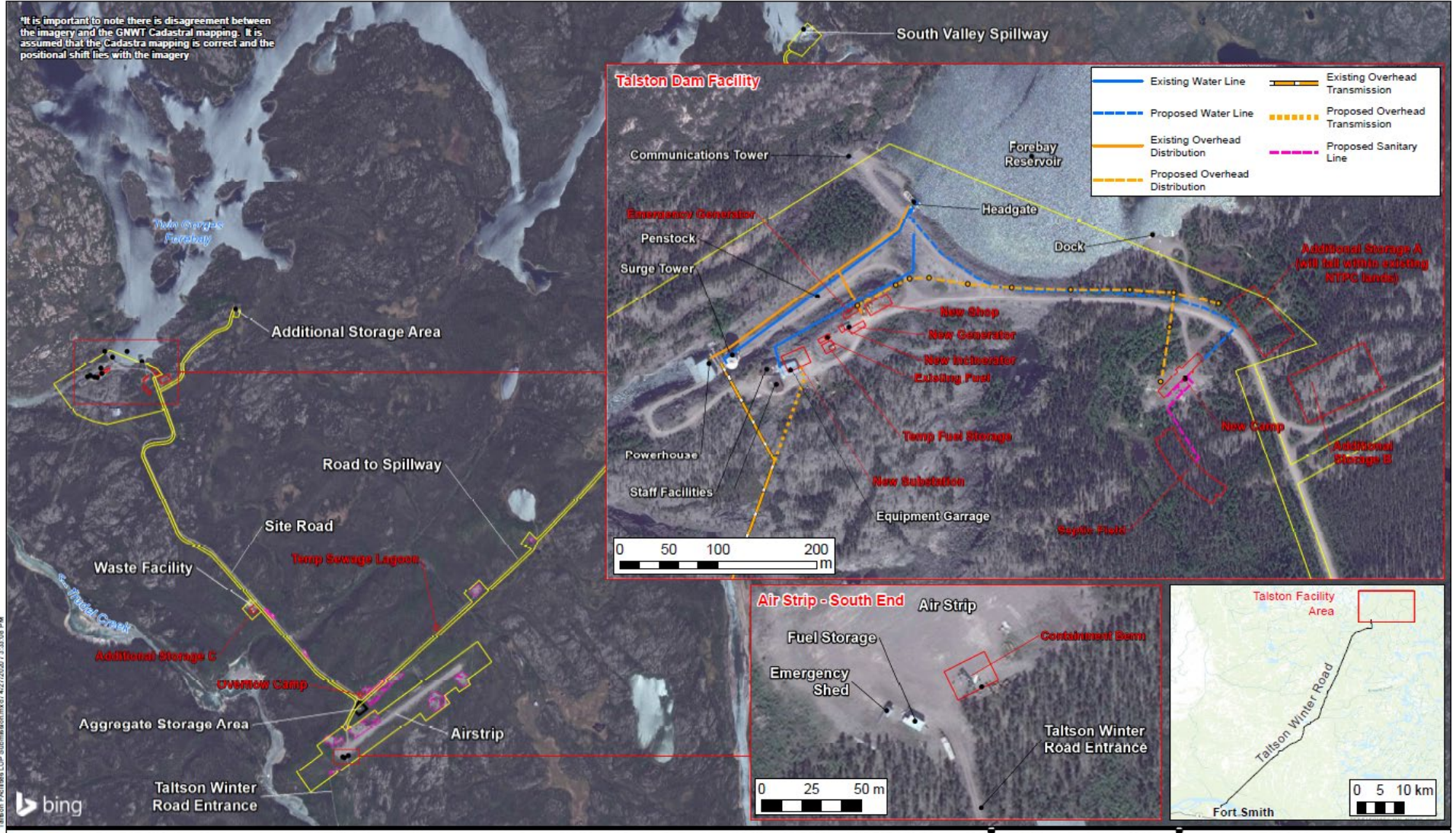
- Cleared Area will be approximately 75m x 125m
- Vegetation must be removed separately from overburden, organic soils and moss
 - Vegetation is trees and brush only
 - Organic soils, moss and overburden must be stored and piled to be used in reclamation of site
- When possible merchantable timber (=> 5" in diameter) that is removed will be stacked for salvage/use.
 - If a local contractor is completing the work and they want to use some of the timber for firewood they can stack and remove on winter road
- **Vegetation cannot be piled up around edges of clearing**, all veg must be removed from area
- Organic soils should be stockpiled for use in reclamation
 - Choose an area to stockpile the organic soils and keep them separate from the veg
- The work will occur in winter so the veg can be actively burned as it is gathered

Wildlife survey took place February 4 2021 no major features were noted. Memo of results will be submitted

Storage Area B is outlined on the following figures



It is important to note there is disagreement between the imagery and the GNWT Cadastral mapping. It is assumed that the Cadastra mapping is correct and the positional shift lies with the imagery



Talston Facilities LUP Submission.mxd 4/27/2020 1:33:08 PM



- Lease Boundary
- Gravel Quarry
- Facility Location
- New Facilities

PROJECT NO.: 2019-8044.300.205
 DATE: April 2020
 DRAWN BY: DA

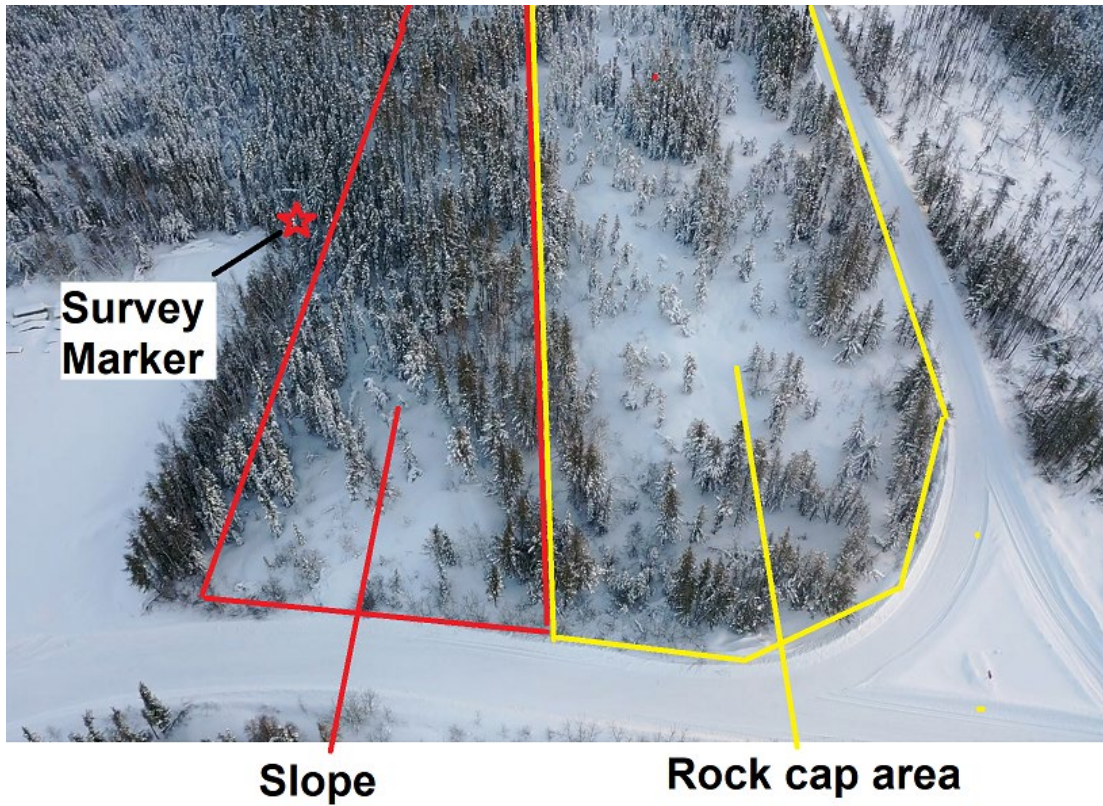
0 1,000 m

NEW TALSTON FACILITIES

NTPC

Talston Facility Overview

A buffer of vegetation will need to be left between Storage Area B and Storage Area A. There is a ridge of vegetation that should be left intact to differentiate the two areas and will be unusable for storage which is outlined in the photo below: labeled as slope. The rock cap area will be the most suitable for the Storage Area B.



Properly clearing area outlined below with no brush piled along the edges

