



## SECTION 2: DESCRIPTION OF THE DEPOSIT

### 2.1 Relevant Reports and Associated Documents

Active Land Use Permit MV2016F0017 – Expires on August 24, 2023. See MVLWB Public registry and Expired (May 8, 2022) Quarry Permit 2019QP001.

### 2.2 Location

All quarries are located on Foxholes Rd. (Figures 1-4). Additional, maps are attached.

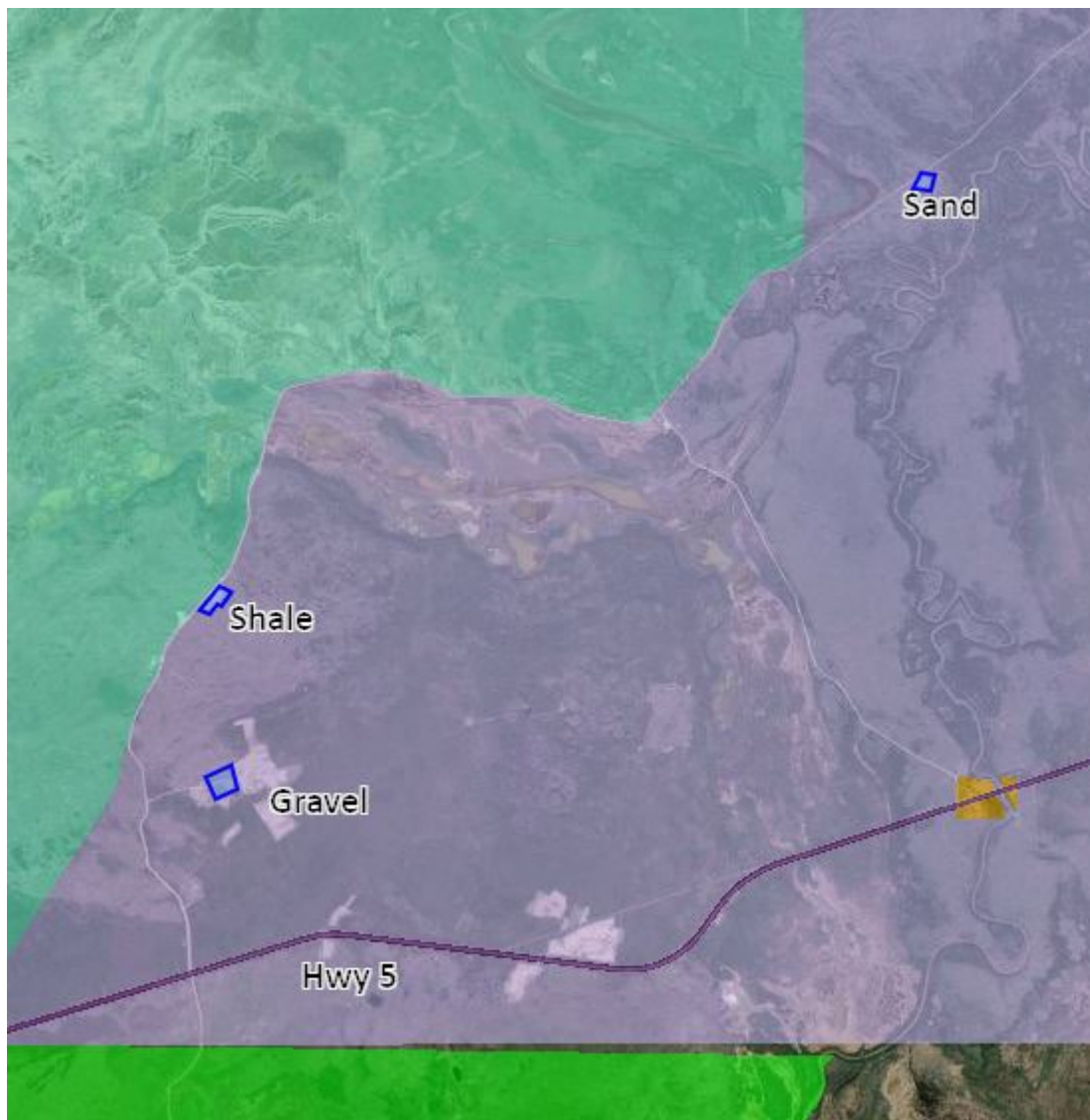


Figure 1. Overview map of quarry locations.



Figure 2. Gravel quarry map.

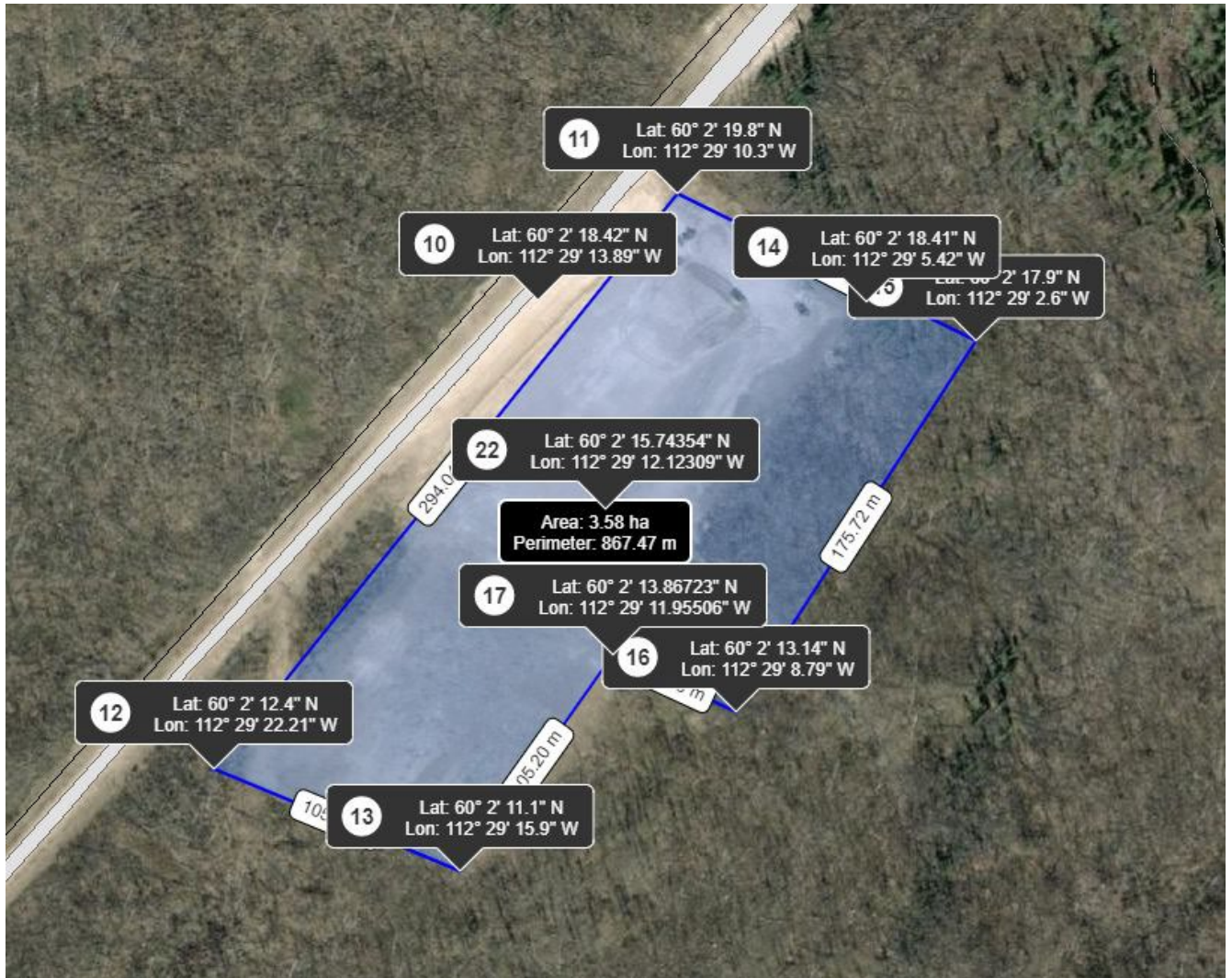


Figure 3. Shale quarry map.



Figure 4. Sand quarry map.

### 2.3 Surface Water and Hydrogeology

There are no Water License's issued to Aurora College Heavy Equipment Operator's (HEO) Program. No water licenses are required, there are no surface/subsurface water features in or near the quarry area's.

### 2.4 Test Hole Locations and Descriptions (Omit if a Land Use Permit is required)

We have dug test holes in both the rock quarry and in the shale pit looking for a new source of clean gravel and clean shale. We will develop the gravel quarry first as we already have a stockpile of shale we can use at this time. Due to the deposits composition test holes are required to determine which areas have a better concentration of 3" minus materials, therefore reducing waste and requires less stripping of virgin ground.

We have dug 37 test holes in the area to determine what's usable and what's not. While all test holes had approx. 6" of overburden covering the gravel – the area revealed an average depth of gravel of approx. 5' in depth.