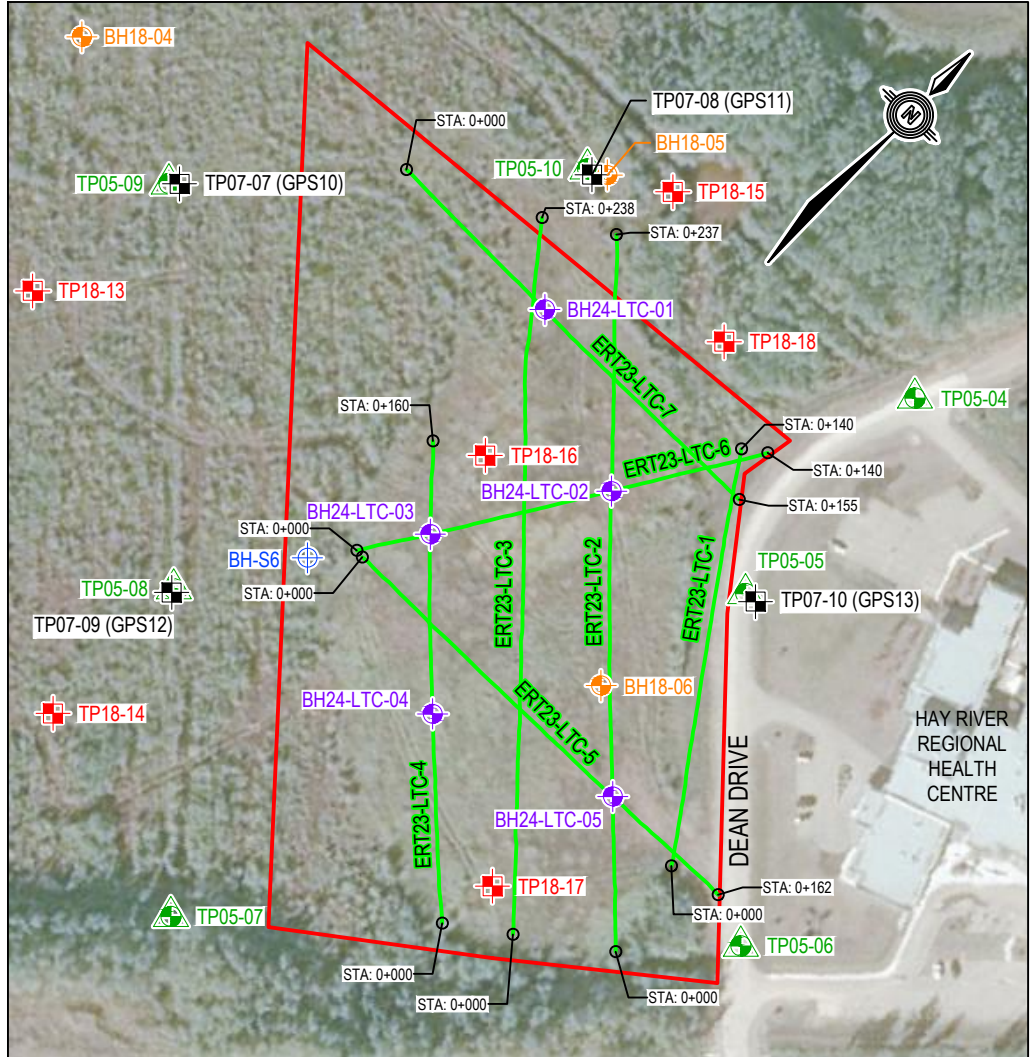


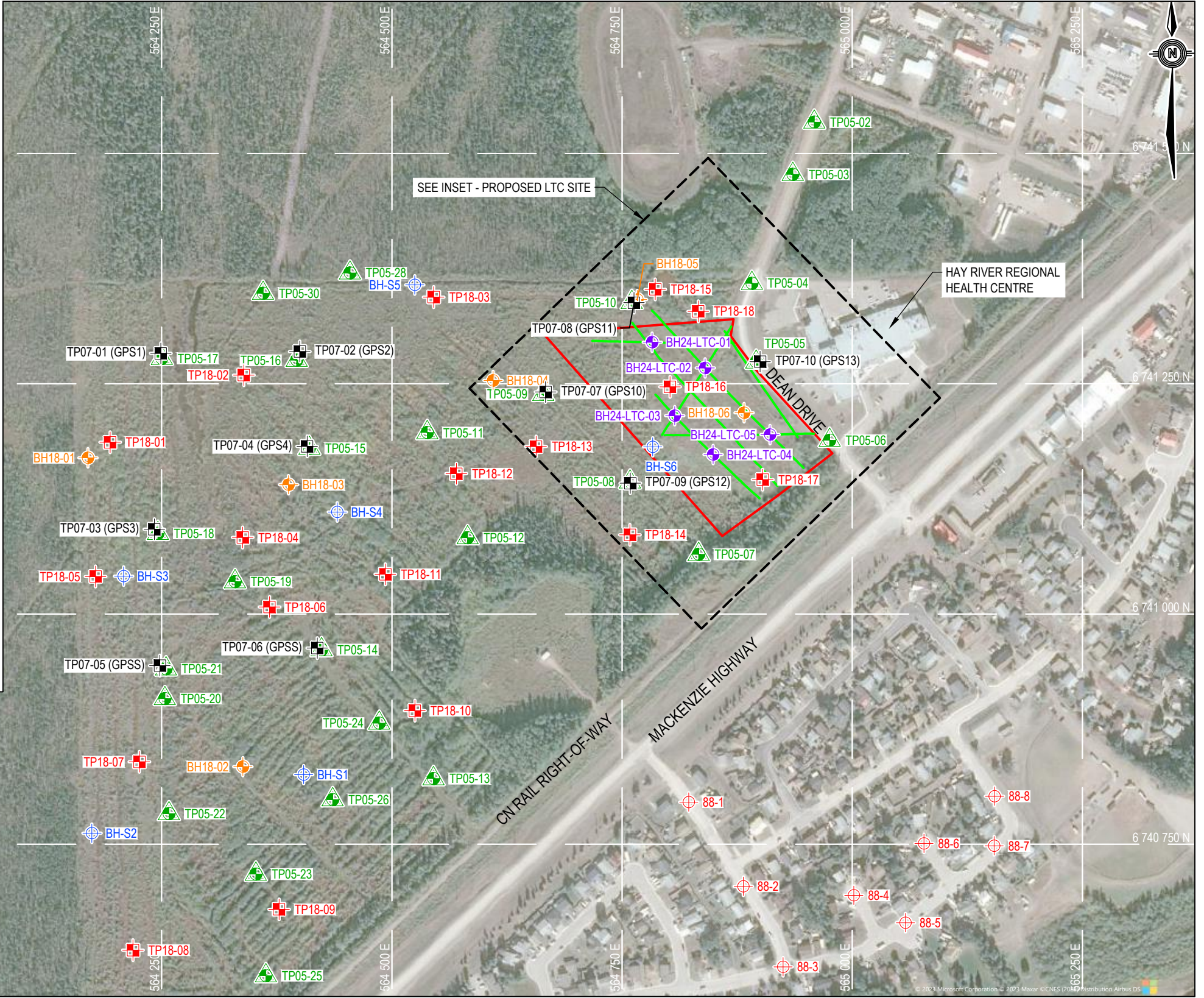
C:\Users\elvin.lee\OneDrive - Tetra Tech, Inc\Project Data\ENG.EARC03277-01\Production Drawings\ENG.EARC03277-01_002.dwg [FIGURE 1] February 21, 2024 - 9:56:53 am (BY: LEE, ELVIN)



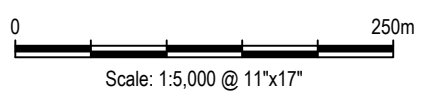
INSET - PROPOSED LTC SITE

SCALE = 1:2500

PROPOSED BOREHOLE SUMMARY			
BOREHOLE NUMBER	NORTHING	EASTING	PROPOSED DRILLING DEPTH
BH24-LTC-01	6 741 295.0	564 782.8	15.0
BH24-LTC-02	6 741 267.2	564 840.4	15.0
BH24-LTC-03	6 741 215.3	564 807.2	15.0
BH24-LTC-04	6 741 173.1	564 849.0	15.0
BH24-LTC-05	6 741 194.8	564 910.8	15.0



- LEGEND**
- ⊕ 2024 PROPOSED BOREHOLE (TETRA TECH 2024)
 - ⊕ 2018 BOREHOLE (STANTEC 2018)
 - ⊕ 2018 TESTPIT (STANTEC 2018)
 - ⊕ 2007 TESTPIT (UMA 2007)
 - ⊕ 2005 BOREHOLE (UMA 2005)
 - ⊕ 1998 BOREHOLE (GOLDER 1998)
 - ⊕ 1988 BOREHOLE (THURBER 1988)
 - PROPOSED LTC SITE
 - 2023 ELECTRICAL RESISTIVITY TOMOGRAPHY LINE (TETRA TECH 2023)



ISSUED FOR DISCUSSION

CLIENT



**HAY RIVER LTC GEOTECHNICAL / GEOPHYSICAL INVESTIGATION
HAY RIVER, NORTHWEST TERRITORIES**

PROPOSED BOREHOLE LOCATION PLAN

PROJECT NO. ENG.EARC03277-01	DWN EL	CKD TB	REV IFD
OFFICE EDMONTON	DATE FEBRUARY 12, 2024		

FIGURE 1

