



# **WASTE MANAGEMENT PLAN**

Government of the Northwest Territories  
Department of Environment and Natural Resources

Program: Mile 222 Check Wildlife Station, Mackenzie Mountains

Project: Mackenzie Mountains Research and Monitoring Operations

Environment & Natural Resources - Sahtu Region  
5 Forestry Road, Box 130 Norman Wells NT X0E 0V0  
Phone: (867) 587-3506 Fax: (867) 587-3516

Prepared September 16, 2022

## **1.0 INTRODUCTION**

The Waste Management Plan has been prepared for the storage of Jet B Fuel for the Department of Environment and Natural Resources, for the Sahtu Region's upcoming operations surrounding research, monitoring, and enforcement in the Mackenzie Mountains. The plan demonstrates the Department of Environment and Natural Resources will have the appropriate measures in place to manage wastes generated from this project. The Waste Management Plan is outlined for the storage of fuel at ENR Cabin Mile 222 (63° 14' 57.39" N, 130° 1' 33.27" W), and contingent storage at Godlin Lake (63° 47' 1" N, 128° 46' 2" W), and Northwest Territories and Yukon border (63° 47' 1" N, 128° 46' 2" W).

Project activities include: mobilization of fuel to the Yukon/NWT border by truck, staging of fuel equipment by helicopter, refueling of helicopters throughout the duration of the project, demobilization of empty fuel tanks once project is completed. The Waste Management Plan shall be in effect from date of acceptance and of applicable Lands Use Permit. Any future changes and/or amendments will be submitted to the Sahtu Land and Water Board (SLWB) and Indigenous and Northern Affairs Canada.

## **1.1 Organization Description**

The primary contact is:

Department of Environment and Natural Resources  
Sahtu Region  
Sahtu Regional Office  
#5 Forestry Road  
P.O. Box 130  
Norman Wells, NT  
X0E0V0

Primary Contact:

Jeff Walker, Regional Superintendent, GNWT  
(867) 587-3532  
ENR Emergency #: (867) 587-2422

Additional Contact:

Kevin Chan, Regional Biologist, GNWT  
(867) 587-3517

## **1.2 Environmental Policy**

Environment and Natural Resources (ENR), as part of the Government of the Northwest Territories (GNWT), works to promote and support the sustainable use and development of natural resources and to protect, conserve and enhance the Northwest Territories environment for the social and economic benefit for all residents.

The GNWT shares this responsibility with Indigenous and municipal governments, federal and territorial departments, boards and agencies and every resident of the Northwest Territories (NWT).

## **1.3 Purpose and Scope of Plan**

The Waste Management Plan was developed to fulfill ENR's mandate is to help minimize the potential for future environmental impacts at its fuel cache facilities by developing procedures and best management practices. Employees and contractors working on the Project will be required to review the Waste Management Plan and be aware of their roles and responsibilities. A copy of the WMP will be by personnel conducting activities for the project.

The project is expected to generate approximately 144 empty drums of Jet B Fuel. Each season, empty drums will require off-site transportation from ENR Mile 222 and contingent storage sites at Yukon/NWT border and Godlin Lake. Appropriate containers and/or tanks will be used to store and transport waste via Canol Trail to approved facilities.

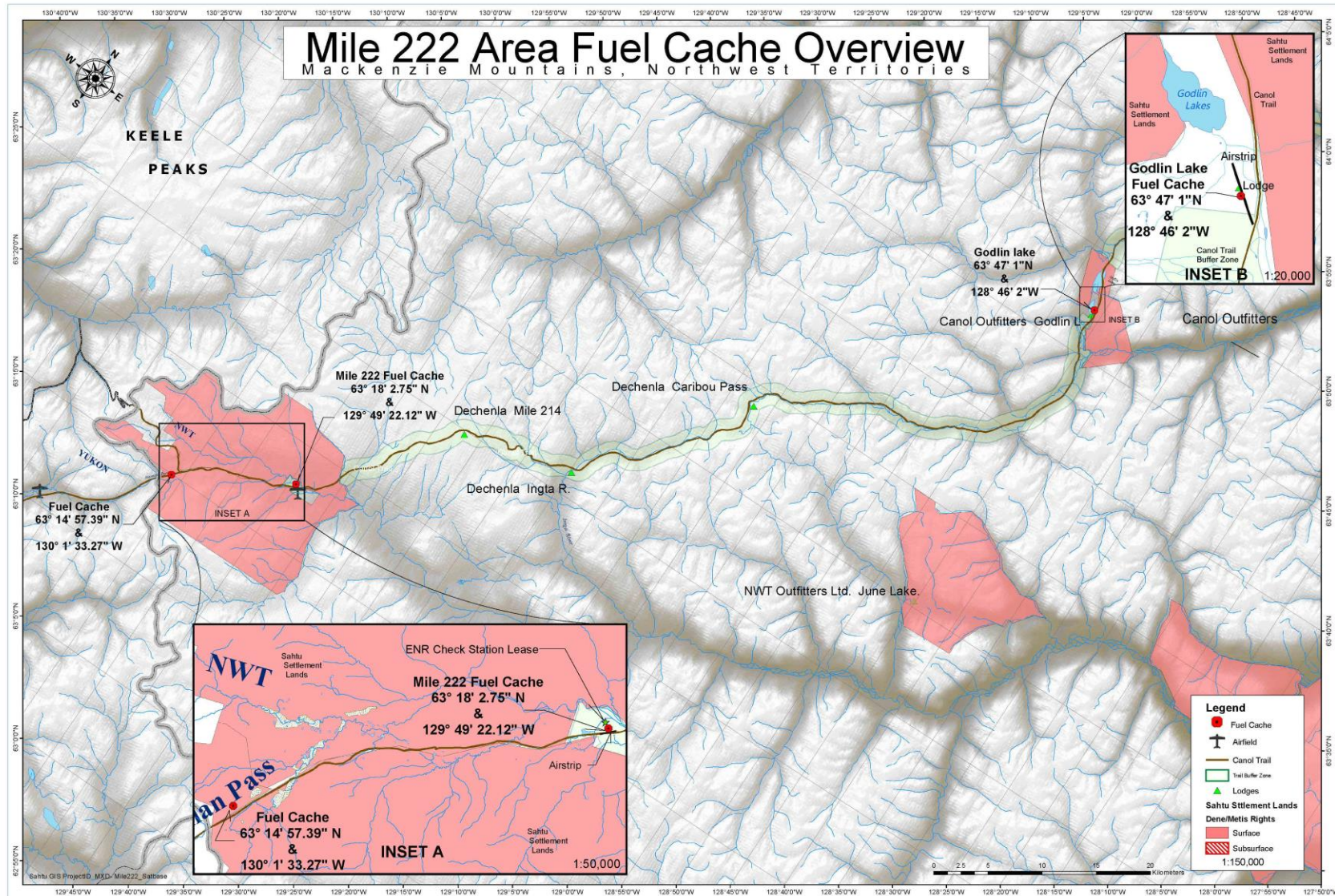
All hazardous wastes will be stored in areas clearly marked at least 100m away from high-water mark of any water body. Any spills will be responded to as in accordance with the Spill Contingency Plan. All waste and empty drums will be removed and transported prior to demobilizing equipment and disposed of in an approved facility. All hazardous materials will be transported in accordance with applicable Workplace Hazardous Materials Information System (WHIMIS) and Transportation of Dangerous Good (TDG) legislation.

### 1.2 Waste Storage Locations

Please see Figure #1 with overview of fuel storage locations.

<b>Storage Site</b>	<b>Location</b>
ENR Mile 222	63° 14' 57.39" N, 130° 1' 33.27" W
Godlin Lake	63° 47' 1" N, 128° 46' 2" W
Yukon NWT Border	63° 47' 1" N, 128° 46' 2" W

Figure 1: Mile 222 Area Fuel Cache Overview



Prepared September 16, 2022