



Wek'èezhìi
Land and Water Board

Wek'èezhìi Land and Water Board



- What is the Land and Water Board?
- Who is the Land and Water Board?
- What does the Land and Water Board do?
- How does the Board work with the communities?

August 4th, 2005



Wek'èezhì
Land and Water Board





Wek'èezhì
Land and Water Board



CHAPTER

22

Land and Water Regulation

On Tłıchǫ Lands:

The Tłıchǫ Government decides whether to allow developers to use Tłıchǫ lands. For major projects, the Wek'èezhì Land and Water Board is responsible for issuing land use permits and is involved in issuing water licences.

Off Tłıchǫ Lands:

The Tłıchǫ Government will be consulted on development projects throughout Wek'èezhì. For major projects within Wek'èezhì, but off Tłıchǫ lands, the Mackenzie Valley Land and Water Board and the Wek'èezhì Land and Water Board deal with water and land use permits.

All major developments (both on and off Tłıchǫ lands) that are likely to affect the environment must be reviewed by the Mackenzie Valley Environmental Impact Review Board. Its recommendations go to Canada, the GNWT and the Tłıchǫ Government.



The Land and Water Board is...



A regulatory agency

Appointed by the Federal, Territorial, and
Tlcho Governments



A decision-making authority

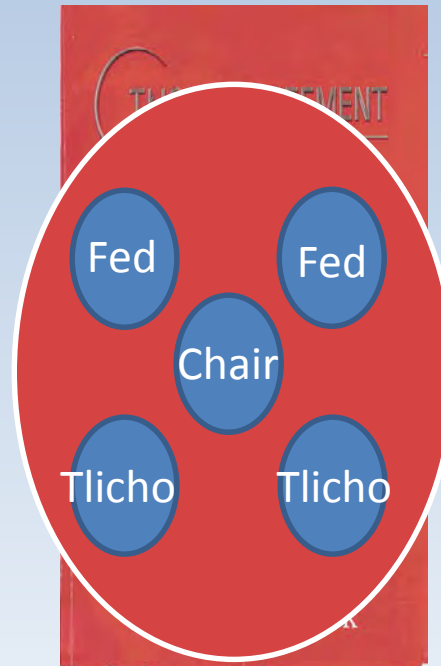





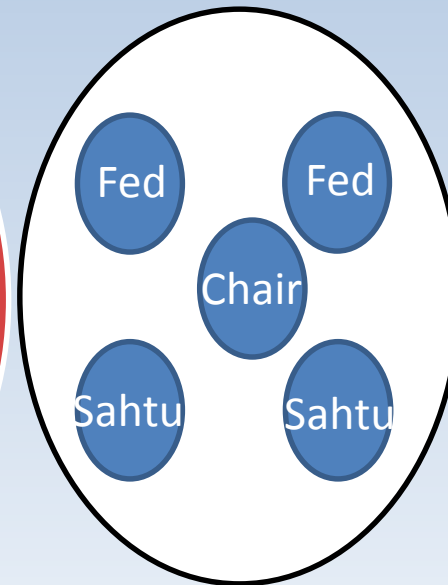
NWT Land Claims



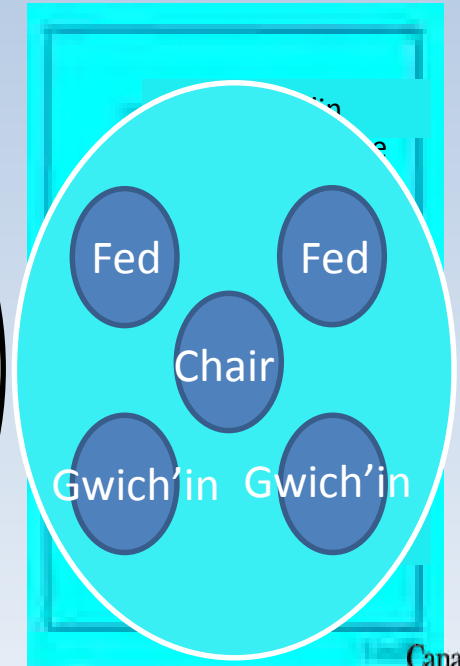
Regional Panels




 Wek'èezhìi
Land and
Water Board



 Sahtu Land
and Water
Board

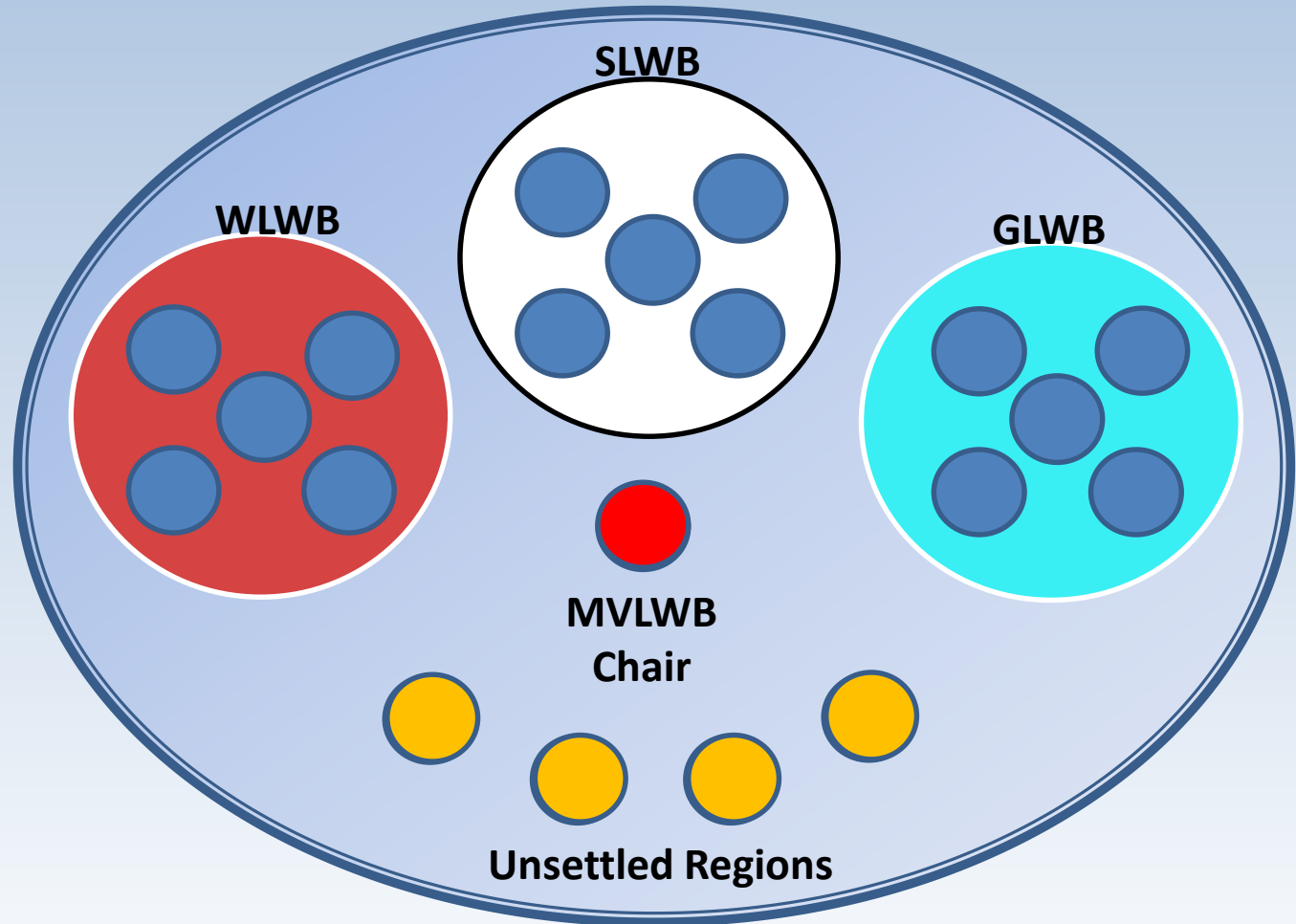


 Gwich'in
Land and
Water Board

Mackenzie Valley Land and Water Board



Wek'èezhì
Land and Water Board



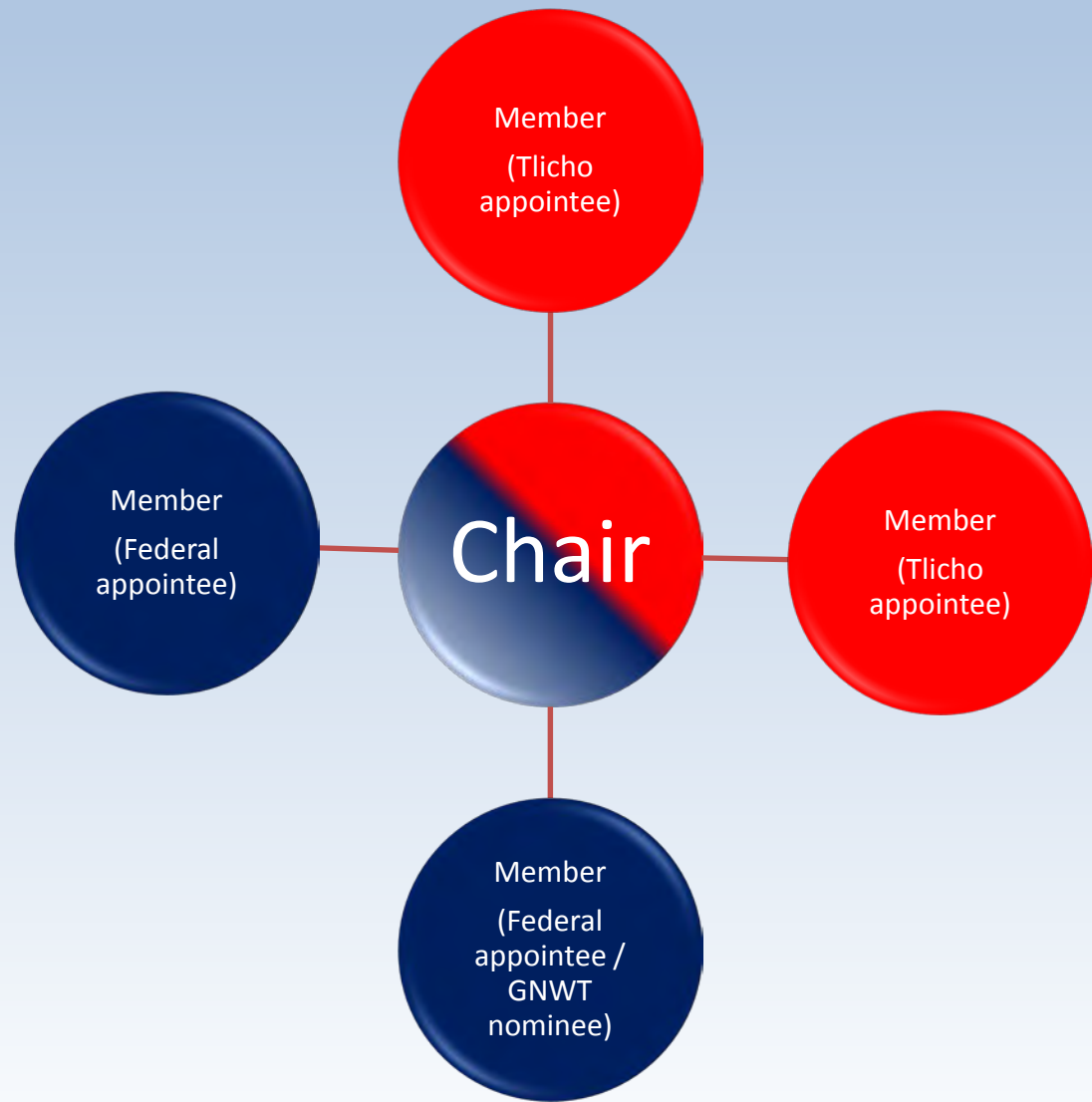


Relationship to Tlicho Government

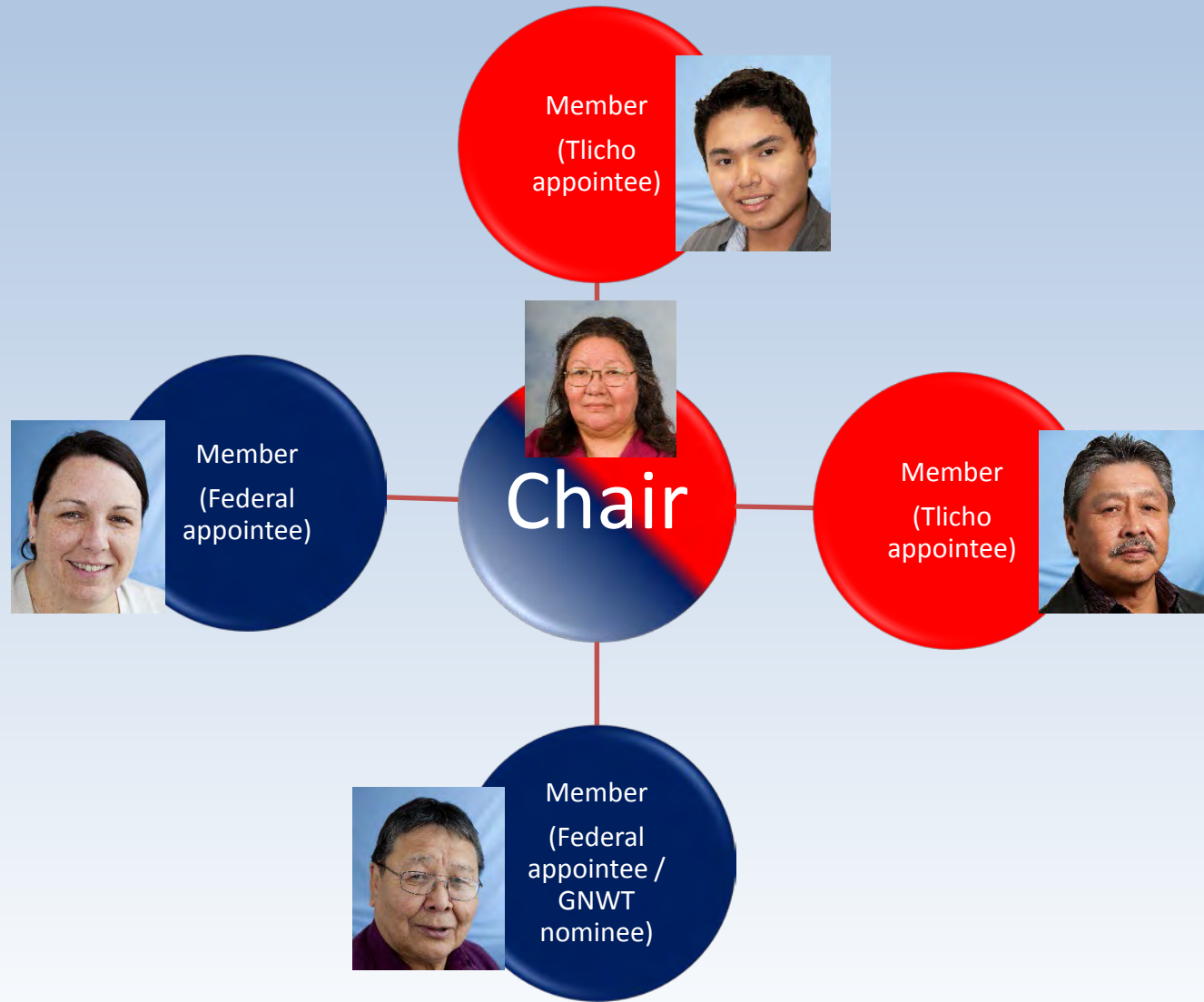
- WLWB is an independent decision making body BUT...
- Must consult with Tlicho Government on every application it receives on Tlicho Lands.
- Tlicho Government can give policy directions to the WLWB.
- Tlicho Government appoints to WLWB.



This is Who We Are...



Board Members





Staff

9 staff located in Wekweètì and Yellowknife.



- Brett Wheler – A/Executive Director
- Patricia Magrum – Administrative Coordinator
- Dr. Kathy Racher – Technical Director
- Patty Ewaschuk – Technical Advisor
- Ryan Fequet - Regulatory Manager
- Dr. Sarah Elsasser – Regulatory Specialist
- Elissa Berrill – Regulatory Specialist
- Roberta Judas – Regulatory Technician
- Jessica Pacunayen – Regulatory Intern





Mandate

- Responsible for regulation of land and water and deposit of waste throughout Wek'èezhìi.

Objective

- The Wek'èezhìi Land and Water Board shall regulate the use of land and waters and the deposit of waste so as to provide for the conservation, development and utilization of land and water resources in a manner that will provide the optimum benefit generally for all Canadians and in particular for residents of its management area.



This is What We Do...



Combine traditional and scientific knowledge

Manage land and water responsibly

Conduct fair and thorough reviews

Grant water licences and land use permits





Wek'èezhì
Land and Water Board



CHAPTER

1

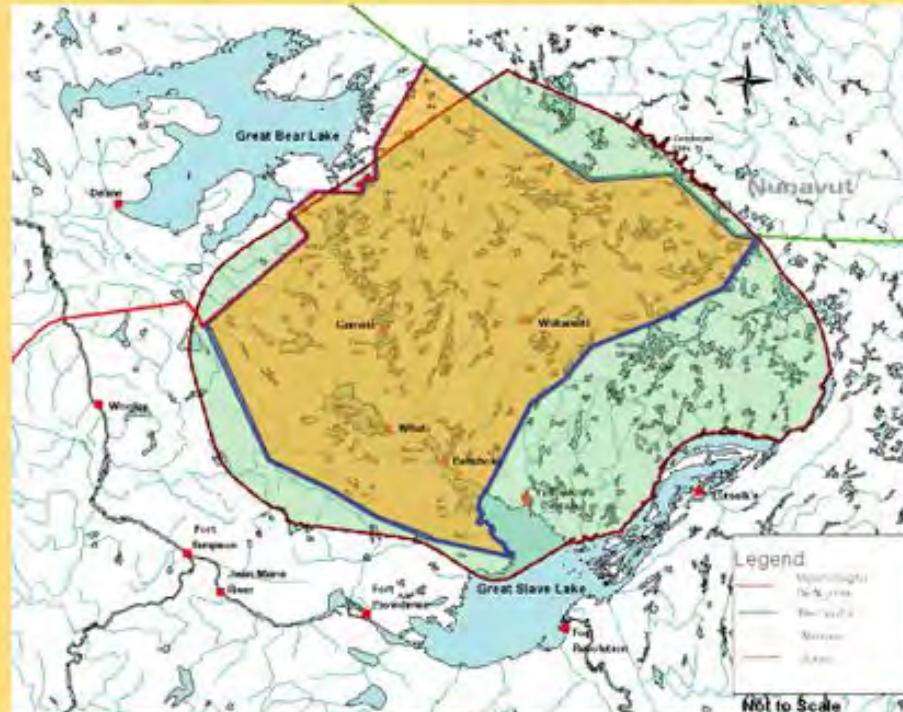
Definitions and Maps



Mòwhì Gogha Dè Njìt'èe is the traditional area of the Tłı̨chǫ, described by Chief Montwi during the signing of Treaty 11 in 1921.



Wek'èezhì is the area where the Wek'èezhì Land and Water Board and the Wek'èezhì Renewable Resources Board manage resources.





Examples of Developments the WLWB Regulates

- Diavik and Ekati Diamond Mines
- Colomac
- Fortune Minerals
- Rae-Edzo and Whatì Community Government Municipal Water Licenses
- Mineral Exploration Camps
- Hydroelectric Facilities (i.e., Snare Hydro)
- Winter Roads
- Outfitting Camps
- Commercial Woodcutting Activities
- Other activities that trigger the thresholds defined in the Mackenzie Valley Land Use Regulations



Wek'èezhì
Land and Water Board



9/26/2014



Photo: IEMA



Wek'èezhì
Land and Water Board



9/26/2014





Wek'èezhì
Land and Water Board



9/26/2014



18



How do LWBs work with Communities?

- Licence all Communities
 - Water use
 - Solid waste disposal
 - Sewage disposal
- Management Plans - Guidelines
- Enforcement and Compliance (GNWT)
 - Inspectors Nahum Lee & Anne-Marie Guedon
- Annual Reporting - Templates
- Sampling and Monitoring – Surveillance Network Programs (SNP) Training

Behchoko Water Licensing Process



9/26/2014

- Community Government's Type B Water Licence expires November 30, 2014
- Community has more than 2000 people now so a Type A Water Licence is required
- Community submitted an application on April 29, 2014
- Process includes opportunities for reviewers to provide information to the Board (e.g., this session)
- Board will make a decision before November 30th

How Will the WLWB Make a Decision?

- Takes written submissions
- Holds public hearings/community information sessions
- Maintains a public registry
- Considers Traditional Knowledge
- Works with technical staff/consultants
- Holds Board meetings to review materials and make decisions based on evidence



9/26/2014



Today, community members are welcome to speak to the Board and ask questions about water licensing and waste management in the community.

Masi cho