



4923-52<sup>nd</sup> St  
P.O. Box 1500  
Yellowknife, NT XIA 2R3

Oct 31, 2022

**Attention:** Emily Finstad,  
Regulatory Specialist  
Wek'eezhii Land and Water Board  
#1-4905 48<sup>th</sup> St. Yellowknife, NT X1A 2P6

**Re: Colomac Long Term Monitoring Project  
W2014X0004 Final Plan**

---

Dear Ms. Finstad,

On behalf of Crown-Indigenous Relations and Northern Affairs Canada (CIRANC) – Contaminants and Remediation Division (CARD), please accept this submission of the Final Plan for W2014X0004 Land Use Permit. This submission is in accordance with Section 5.4 of the Land Use Permitting Process Guidance Document. The close out of the LUP W2014X004 is due to a new application W2021X0008, approved by WLWB on January 24, 2022. The land use activities from W2014X0004 are decreased to only the use of equipment listed in the land use permit application, and the storage of fuel listed in the land use application. The construction of a winter road and development of a camp are no longer included in W2021X0008.

The following information is provided as outlined:

- Map showing the location, the area, and distances of all the site features.
- GIS data following the Geospatial Data Submission Standards.
- The footprint of the site that is utilized in the monitoring program is approximately 250 hectares.
- As the land is federal land, CIRNAC is exempt from land use fees.

If you have questions or concerns, please contact Project Specialist Beth Cowan at [beth.cowan@rcaanc-cirnac.gc.ca](mailto:beth.cowan@rcaanc-cirnac.gc.ca) or myself at [joel.gowman@rcaanc-cirnac.gc.ca](mailto:joel.gowman@rcaanc-cirnac.gc.ca).

Sincerely,

Joel Gowman  
Project Manager, CIRNAC-CARD

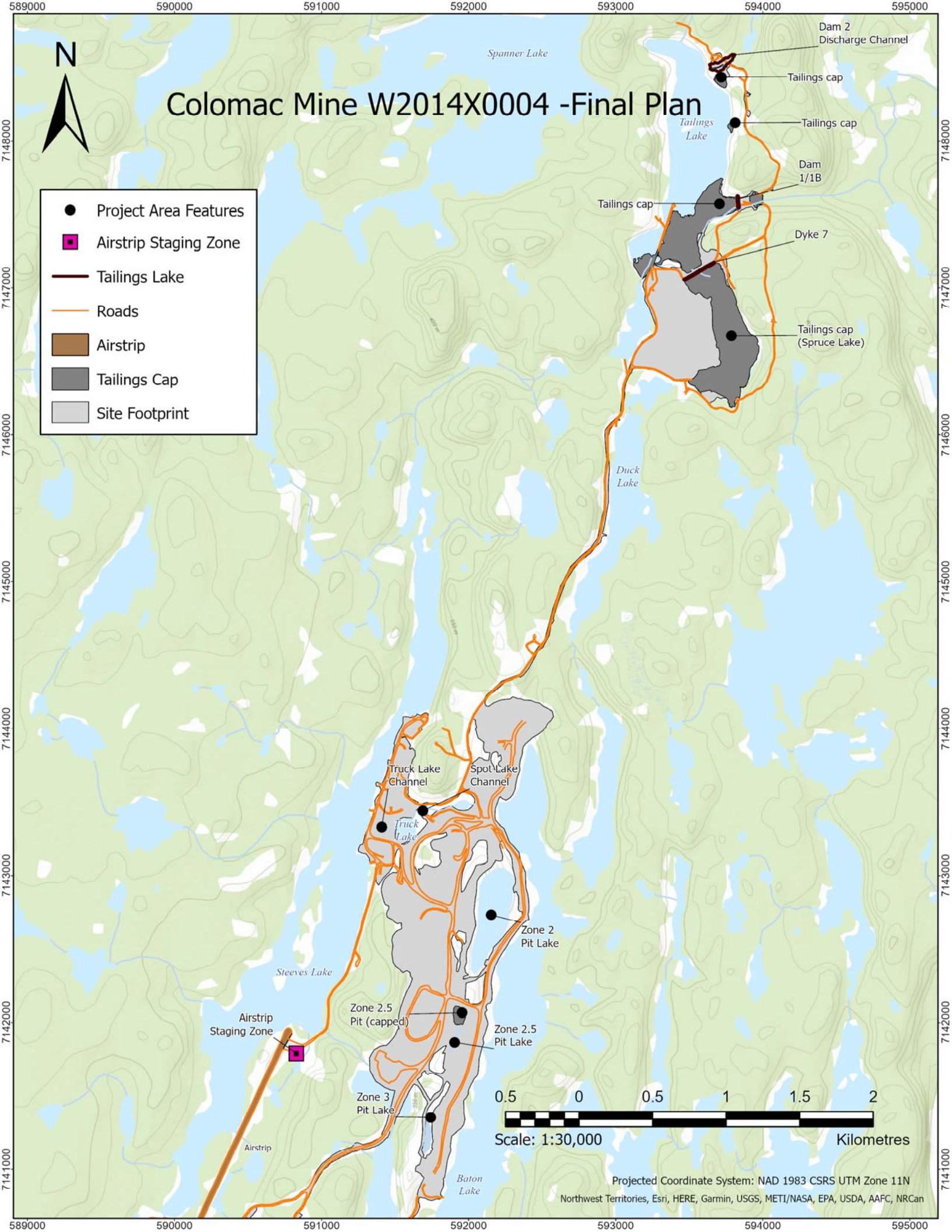
Cc: Tim Morton, Inspector, CIRNAC-Lands



# Colomac Mine W2014X0004 -Final Plan



- Project Area Features
- Airstrip Staging Zone
- Tailings Lake
- Roads
- Airstrip
- Tailings Cap
- Site Footprint



Projected Coordinate System: NAD 1983 CSRS UTM Zone 11N  
Northwest Territories, Esri, HERE, Garmin, USGS, METI/NASA, EPA, USDA, AAFC, NRCan