

January 2024

W2021Q0011

Anneli Jokela
Wek' èezhii Land and Water Board
#1-4905 48th ST, Yellowknife, NT X1A 3S3

Kassandra DeFrancis
Wek' èezhii Land and Water Board
#1-4905 48th ST, Yellowknife, NT X1A 3S3

Re: Amendment Application for Snare Hydroelectric Facility Type A Land Use Permit W2021Q0011 - Archaeological Site KhPm-1

Hello,

The Northwest Territories Power Corporation (NTPC) owns and operates the Snare Hydroelectric Facility located on the Snare River, approximately 145 km northwest of Yellowknife, NT. The facility includes four hydro generation stations that provide power to the North Slave communities of Yellowknife, Behchokò, Dettah and N'Dilo along with the power generated by the Bluefish Hydroelectric Facility and the Jackfish Lake Generating Station.

In the fall of 2021 NTPC applied for a site-wide Type A Land Use Permit (LUP) that consolidated the three current LUP's for Snare into one to increase efficiencies for all regulatory undertakings related to land use at Snare Hydro, improving processes and interactions for the WLWB, GNWT Lands Inspectors, NTPC and all Snare Hydro stakeholders moving forward.

WLWB Type A Land Use Permit W2021Q0011 was issued in early January 2022 and includes :

- Construction and operation of winter roads
- Use of quarry and borrow locations on site
- Construction of new substation at Snare Falls
- Construction of temporary camps for additional staff accommodation required for specific projects
- Fuel storage on site; both permanent and temporary
- Minor clearing for access to transmission lines

- Operation of heavy equipment not on existing road right of way or dams

During the engagement process for LUP W2021Q0011 NTPC contacted the Prince of Wales Northern Heritage Centre Archaeology Program to verify the presence of any archaeological sites within the scope of the operations for the permit. The Prince of Wales Northern Heritage Centre Archaeology Program identified one site that was within the scope of the project: KhPm-1. However, the location of the KhPm-1 was not provided until after LUP W2021Q0011 was issued on January 4, 2022.

Snare Hydroelectric Facility LUP W2021Q0011 Condition 34 ARCHAEOLOGICAL BUFFER states *“The Permittee shall not operate any vehicle or equipment within 150 metres of a known or suspected historical or archaeological site or burial ground, except site KhPm-1. With regard to KhPm-1 the Permittee shall not operate any vehicle or equipment within 100 metres.”*

The location of the KhPm-1 site, the Snare Forks Spillway and the 100m buffer is provided in Figure 1. Photos 1 to 4 provide some site photos from the area as well.

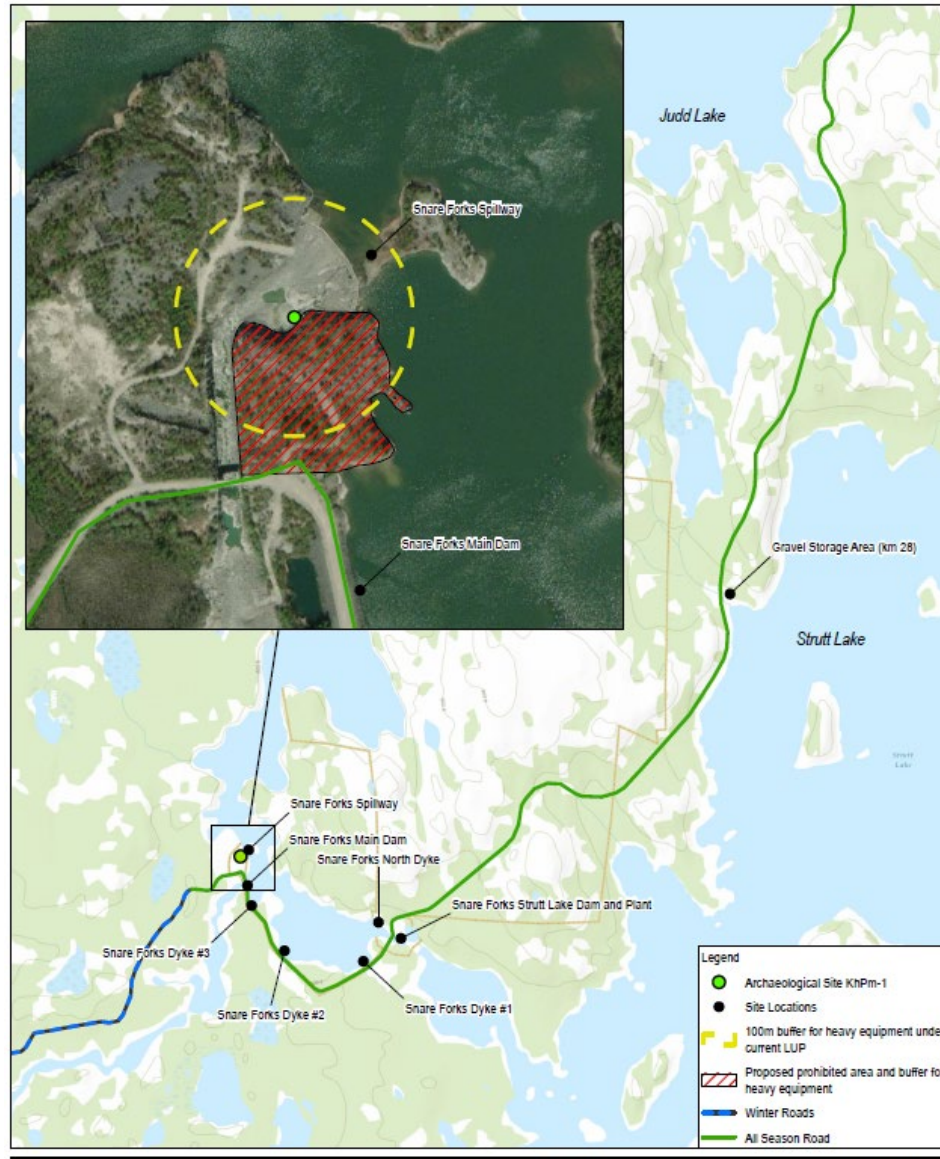
It can be seen by Figure 1 that the 100m buffer covers an area that includes the Snare Forks Spillway and an access road. The Snare Forks Spillway and access road have all been previously disturbed by heavy equipment during construction and maintenance of the facility since 1975 when the Snare Forks Facility was constructed. Heavy equipment use will be required moving forward to maintain the spillway and access road as required by the NTPC Dam Safety Program regulated under the Snare Hydro Type A Water Licence.

Given that NTPC did not have the location of KhPm-1 during the review period NTPC was unable to identify the required change in Condition 34.

To ensure that NTPC can maintain the Snare Forks Spillway and access road as required by the NTPC Dam Safety Program and the Snare Hydro Type A Water Licence NTPC and after feedback and consultation with stakeholders and regulators, NTPC is proposing to amend Snare Hydroelectric Facility LUP W2021Q0011 Condition 34 ARCHAEOLOGICAL BUFFER to state *“The Permittee shall not operate any vehicle or equipment within 150 metres of a known or suspected historical or archaeological site or burial ground, except site KhPm-1. With regard to KhPm-1 the Permittee shall not operate any vehicle or*

equipment as outlined in the KhPm-1 Updated Boundaries Figure or in any areas of previously undisturbed terrain within a 100 m buffer of the site.”

Figure 1: KhPm-1 Updated Boundaries and 100m Buffer



<p>Paper Size ANSI A 0 250 500 750 1,000 Meters</p>			<p>Northwest Territories Power Corporation</p>	<p>Project No. 12609894 Revision No. - Date 8/30/2023</p>
<p>Map Projection: Transverse Mercator Horizontal Datum: North American 1983 GCS: NAD 1983 UTM Zone 11N</p>		<p>Site Map</p>		<p>Data source: World Imagery MapIt © 2023 GHD</p>
<p><small>© 2023 GHD. All rights reserved. This document is the property of GHD and is intended for the use of the client only. No part of this document may be reproduced without the prior written consent of GHD. Printed on 30 Aug 2023 - 08:27</small></p>				

Photo 1: Looking northeast towards the Snare Forks Spillway from the ridge left of KhPm-1



Photo 2: Looking southwest towards the Snare Forks Spillway from the ridge left of KhPm-1



Photo 3: Looking north towards KhPm-1 from the ridge left of KhPm-1



Photo 4: Looking north towards KhPm-1



The new proposed boundaries and the 100m buffer would prohibit not only heavy equipment use to previously disturbed areas but also any type of access to the peninsula of land that KhPm-1 is located on. It will allow heavy equipment operation within the Snare Forks Spillway and access roads to ensure maintenance can take place for these previously disturbed areas.

NTPC is proposing the installation of signage to identify the area as an archaeological site and to restrict access. NTPC also provides site orientations for all workers at Snare Hydro and will update the site orientation to acknowledge the presence of an archaeological site and to restrict access.

NTPC does not anticipate that this amendment will have any effect on existing management plans.

Please let us know your thoughts on this amendment and if there is any additional information or actions are required.

Thanks for your time,

Sincerely,



Graeme Reid
Environmental Analyst
Northwest Territories Power Corporation