

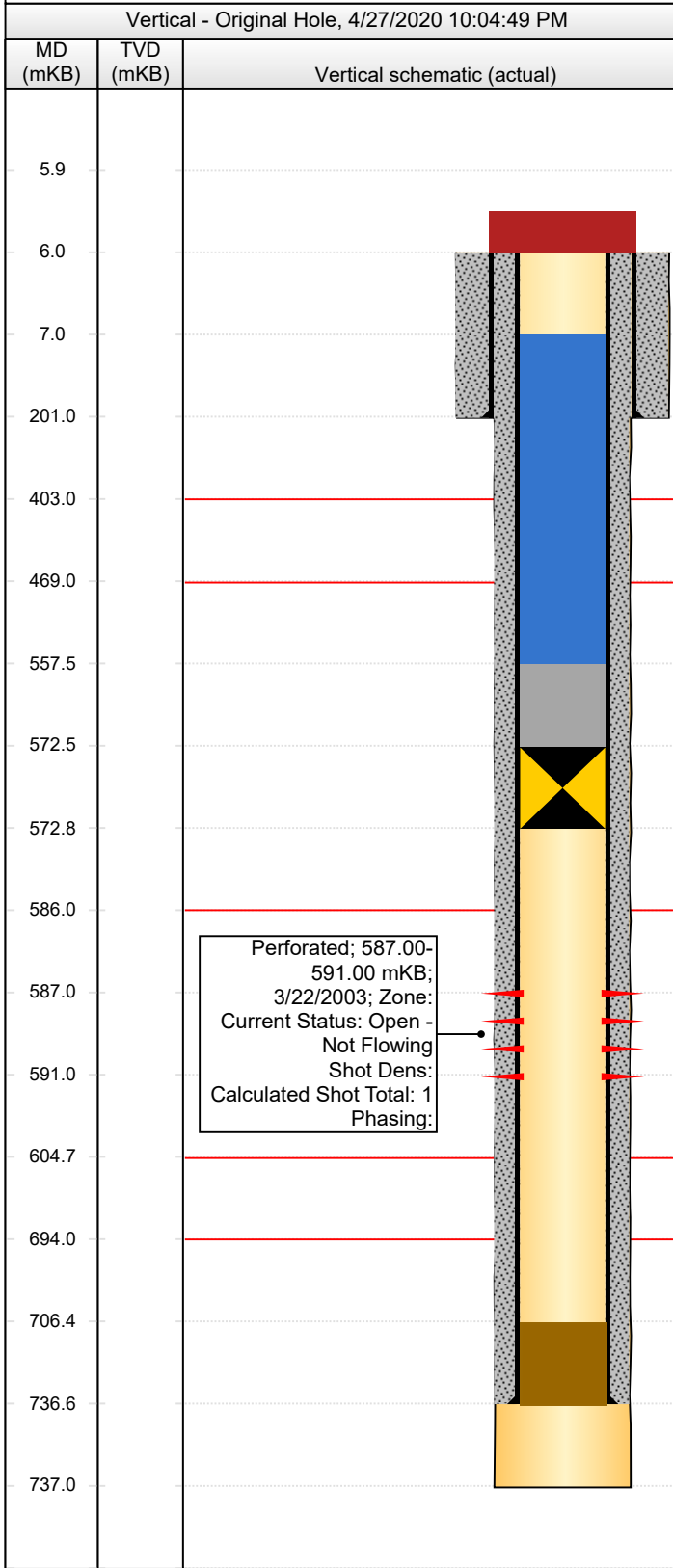


Canadian Natural

Downhole Schematic (Gov't Submission)

S.W. ARROWHEAD M-35 - PROPOSED

Current Event (UWI) 300/M-35-60.30-123.00/00		Surface Legal Location		License # NT001989		Field Name		Province N.W.T	
Well Profile Vertical		Fluid Type Conv Gas		Original KB Elevation (m) 351.00		KB-Ground Distance (m) 4.70		KB-Casing Flange Distance (m)	
KB-Tubing Head Distance (m)		Latitude (°)		Longitude (°)		Orig Spud Date 3/3/2003		Orig RR Date 3/8/2003	
C&C Date		GW Protected?		BGWP (mKB)		Oilsand Area No		H2S Classification Sweet	
Directions To Well Refer to survey, maps.									



SCVF & GM Tests (Last 2 Records)			
Test Date	Test Type	Failed?	
	SCVF		
Openhole Information			
Section Des	Size (mm)	Top (mKB)	Bottom (mKB)
Surface	311.2	6.00	201.00
Main 1	200.0	201.00	737.00
Casing Strings			
Csg Des	OD (mm)	Wt/Len (kg/m)	Grade
Surface	219.1	35.716	J-55
Production	139.7	20.834	J-55
Cement Stages			
Description	Cementing Start Date	Top Depth (mKB)	Btm (mKB)
Surface Cement		6.00	201.00
Comment 14.6 tonnes (11.3m3) G + 3.0% CaCl2, 1.5m3 cement returns			
Production Cement		6.00	736.60
Comment 20.0 tonnes Thixmix II + 0.3% CFL-3 + 1.0% CaCl2, 1.0m3 cement returns			
Perforations			
Zone	Top (mKB)	Btm (mKB)	Current Status
	587.00	591.00	Open - Not Flowing
Other In Hole			
Des	Run Date	Pull Date	Top (mKB)
Vented Steel Cap			5.95
Fresh Water			7.00
Cement			557.50
Bridge Plug - Permanent			572.50
Plug Back	3/22/2003		706.40
Formation Tops			
Formation Name	Top (mKB)	Com	
Scatter	403.00	Porous	
Garbutt	469.00	Tight	
Chinkeh	586.00	Porous	
Base Ground Water	604.70	OROGO default	
Debolt	694.00	Tight	