

January 16, 2023

Office of the Regulator of Oil and Gas Operations

PO Box 1320
Yellowknife NT, X1A 2L9

By Email: orogo@gov.nt.ca

RE: Application to alter the condition of a well – Strategic et al Cameron A-03

ELM Inc, acting on behalf of Alvarez & Marsal Canada Inc in their capacity as the receiver for Strategic Oil and Gas Ltd submits the following documents as part of an application to alter the condition of the above well.

1. Application form to alter 300 A-03 60-10N 117-30W
2. Signed declaration
3. Well abandonment program
4. Existing well schematic
5. Proposed well schematic
6. Gas Migration testing September 26, 2017
7. Previous downhole abandonment reports March 7, 2020

A cement bond log was previously run on this well in March 2020. A copy of the log and its analysis is saved in OROGO's DIIMS system.

ELM has previously sent in documents for the following equipment that is currently active in Cameron Hills and will use on this well.

Service Rigs

- Triumph Well Servicing rig #2: Sent December 20, 2022
- WSK Well Services rig #4: Sent December 23, 2022
- Roll'n Oilfield Industries Rig #33: sent December 22, 2022
- Roll'n Oilfield Industries Rig #32: sent December 22, 2022

Boilers:

- WSK Well Service: sent January 3, 2023
- R&T TKO Oilfield Services Ltd: sent January 4, 2023
- Alpha Boiler Service (Energetic Services): sent January 6, 2023
- Windtalker Energy Rentals: Sent January 5, 2023

Pressure Tanks:

- ProFlo Production Services pressure tanks 7 and 10: sent January 4, 2023
- Stack Production Testing tanks 5 and 7: sent December 29, 2022



ELM Inc
Bow Valley Square II
Suite 1000, 205 – 5th Ave SW
Calgary AB, T2P 2V7

As per the proposed abandonment program, ELM may also use a coil tubing unit. The BOP certifications will be supplied before the coil tubing unit is mobilized to the field.

ELM proposes to conduct gas migration testing on this well during the summer months of 2023. Should a gas migration issue be found, the well will be re entered for repair.

Should you have any questions or require further information, please contact the undersigned at christopher@elminc.ca

Sincerely,

Christopher Gagnon, EIT

ELM Inc, acting as a consultant to Alvarez & Marsal Canada Inc

APPROVAL TO ALTER THE CONDITION OF A WELL

This form is an application for a Well Approval under Section 10 of the *Oil and Gas Drilling and Production Regulations*.

INSTRUCTIONS:

1. Complete both pages.
2. Send one electronic copy of this form and supporting technical documentation by email to orogo@gov.nt.ca. If you wish to communicate with OROGO in hard copy, please do so using the courier address found at www.orogo.gov.nt.ca.

WELL INFORMATION

Well Name	Strategic et al Cameron A-03	Operator	Strategic Oil & Gas
Well Type	Development Well (if Other, specify _____)	Contractor	ELM Inc

RELATED LICENCES, PERMITS, AND AUTHORIZATIONS

Operating Licence No.	NWT-OL-2014-007	Operations Authorization	OA-2018-003-SOG
PRA Licence No.	Production Licence 17	Station Keeping	Not Applicable
		Land Structure	Conventional Land
Land Use Permit No.	MV2022X0018	Issued by:	Mackenzie Valley Land and Water Board
Water Licence No.	MV2010L1-0001	Issued by:	Mackenzie Valley Land and Water Board

ACTIVITY INFORMATION


Current Well Status	Suspended	Anticipated Well Status	Abandoned
Well Path	Vertical	Elevation KB/RT	772.8 m
Approximate Start Date	January 15, 2023	Ground Level / Seafloor	767.4 m
Est. Days on Location	4 days	Anticipated Total Depth	1489.5 m KB

WELL OPERATION PROGRAM

Activity Type	Top to Bottom Interval (m KB)	Comments
Abandonment	0-1489.5	Circulate well with fresh water
Abandonment	0-6.9	Cut and cap (1.5 m below ground level)
Select	-	
Select	-	

Additional Information

"I certify that the information provided on this form is true and correct"

Name	Duncan MacRae	Phone	(403) 538-7514
Title	Vice President	E-Mail	dmacrae@alvarezandmarsal.com
Operator	Alvarez & Marsal Canada Inc., in its capacity as receiver of Strategic Oil & Gas's NWT Property		
Signature	 <i>Responsible Officer of Company</i>	Date	January 13, 2023

DECLARATION BY APPLICANT

Applicant Strategic Oil & Gas Ltd. c/o Alvarez & Marsal Canada Inc.

Title of Application ACW – Strategic et al Cameron A-03 – Abandon wellbore

Pursuant to subsection 15(1) of the *Oil and Gas Operations Act*, the Applicant declares that in respect of the above-referenced Application:

- a) the equipment and installations that are to be used in the work or activity to be authorized are fit for the purposes for which they are to be used, the operating procedures relating to them are appropriate for those uses, and the personnel who are to be employed in connection with them are qualified and competent for their employment; and,
- b) the Applicant shall ensure, so long as the work or activity that is authorized continues, that the equipment and installations continue to be fit for the purposes for which they are used, the operating procedures continue to be appropriate for those uses, and the personnel continue to be so qualified and competent.

Dated this 13th day of January 20 .

Signature of Responsible Officer  _____

Name and Title of Officer Duncan MacRae, Vice President

Please complete this declaration and enclose with the application to the Office of the Regulator of Oil and Gas Operations for an authorization under paragraph 10(1)(b) of the *Oil and Gas Operations Act*.



ELM
Environmental Liability Management

Routine Well Abandonment Program

Strategic Oil and Gas Ltd. C/O Alvarez & Marsal Canada
Inc.

STRATEGIC ET AL CAMERON A-03
300/A-03 60-10N 117-30W

Elm Inc. Project Number: STRA050

Developed by: Christopher Gagnon EIT
Reviewed by: Malcolm McKean P.Eng

January 12, 2023

ROUTINE ABANDONMENT PROGRAM

BACKGROUND:

- Zonally abandoned vertical well
- Well Produced from Keg River and is abandoned with bridge plug
- Filled with inhibited water.

ABSTRACT:

- Circulate well to fresh water with coil tubing
- Pressure test casing
- Cut and cap the well

CONTACTS:

Elm Inc. Calgary Office

Elm Inc. Calgary Office		
Malcolm McKean P.Eng, Vice President Liability	██████████ – Cell	Malcolm@elminc.ca
Christopher Gagnon EIT, Operations Engineer	██████████ – Cell	Christopher@elminc.ca

Elm Inc. Field Staff

Elm Inc. Field Staff		
To be determined	To be determined	To be determined

Client Contact

Client Contact		
Duncan MacRae – Director, A&M	██████████ - Cell	dmacrae@alvarzeandmarsal.com

Regulator Contact

Regulator Contact		
OROGO - Office	867-767-9097	orogo@gov.nt.ca
OROGO - 24-hour emergency line	1-867-445-8551	
NWT Spill Line	1-867-920-8130	

January 12, 2023

WELL INFORMATION:

WELL NAME: STRATEGIC ET AL CAMERON A-03
UNIQUE ID: 300/A-03 60-10N 117-30W
SURFACE LOCATION: 60.03685-117.50160
LICENSE #: 02047
STATUS: Suspended
TOTAL DEPTH: 1590.0 mKB (1590.0 mKB TVD)
ELEVATIONS: **GL:** 767.4 m **KB:** 772.8 m
BGWP: 600.0 mKB
PLUG BACK: 1489.5 mKB
H₂S DATA: Assume 2%. No data on file. Work done on well on February 12, 2019, indicated no H₂S.
SCVF: No record on file, assume none
GAS MIGRATION: No – last tested September 26, 2017
SITP: 0 as recorded on March 15, 2019
SICP: 750 kPa as recorded on March 15, 2019
RESERVOIR PRESSURE: The reservoir is under-pressured (less than 10 kPa/m).
MAX FLARE VOLUME: 1.5 x wellbore volume at 10 MPa = 2.96 e3m³
Significant flare volumes are not expected during this operation
LANDOWNER: Crown

DIRECTIONS:

Refer to maps

COMPLETION:

Keg River 1523.0 to 1542.0 mKB
 Bridge plug and 20m cement 1489 - 1509mKB

FORMATIONS:

Formation	MD (m)
Wabamun	550
Fort Simpson	717
BHL	1318
Slave Point	1341.5
F4	1382.2

January 12, 2023

Watt Mountain	1389.3
Sulphur Point Lst	1392.3
Sulphur Point Dol	1409.6
Muskeg	1422
Keg River	1520.5
Base Keg Porosity	1542

TUBULARS:

SURFACE CASING: 219.1 mm, 35.72 kg/m, J-55, ST&C. Casing landed at 435.8 m KB. Cemented with 31.0 tonnes 0:1:0 ‘G’ + 1.5% CaCl₂. 8.0 m³ cement returns to surface.

PRODUCTION CASING: 139.7 mm, 23.07 kg/m, J-55, LT&C. Casing landed at 1589.6 m KB. Cemented with 22.0 tonnes Thixlite + 1.0% SMS followed by 15.0 tonnes Expandomix LWL + 0.1% CFL-3 + 0.2% LTR + 0.2% SPC-II. No mentions of returns.

Casing size and weight	Casing ID (mm)	Casing Drift (mm)	Casing Capacity (m ³ /m)	Top of Plugback (mKB)	Casing Capacity to Plugback (m ³)
219.1 mm 35.72 kg/m	205.66	202.49	0.033221	N/A	N/A
139.7mm 20.83kg/m	127.30	124.13	0.012729	1589.6	20.24

DOCUMENTATION & REPORTING:

Daily operation reports are to be emailed prior to 7:00 am the next day following operations. They are to be sent to the ELM Inc office via ElmDownholeOffice@elminc.ca

Daily reports are to include a detailed description of the day’s events along with all third party services that were utilized and their respective billing charges. These billing charges are to be added and represented by a daily operational cost. These total daily operational costs are to be reflected in a to-date accumulative cost. Along with the daily report the email must include a brief description of the work that was done that day, as well as a 24 hour forecast for the work to be done the following day.

January 12, 2023

Any incident or injury is to be reported immediately, after appropriate first- and/or medical-aid has been administered to the Elm Inc. office staff in Calgary. After the situation has been placed under control and all affected parties have been aided or corrected, an incident investigation is to take place and attempt to gather all necessary information via written witness statements and summarized in an incident investigation form. Elm Inc. Calgary office staff will then inform the appropriate client representatives of what has taken place.

After the abandonment has been completed, the well site supervisor is to provide the office staff in Calgary with all third-party purchase orders and field tickets/service reports, material transfers, waste manifests along with all appropriate field safety documents. This needs to be completed immediately following the job.

SAFETY:

A safety meeting is to be held with all service company personnel prior to each job. Wellsite supervisor must notify contractors of known hazards of which contractor(s) may be unaware. Wellsite supervisor must ensure that workers are aware of their responsibilities and duties under OH&S regulations and that worker comply with regulations. All service companies supplying materials will review Safety Data Sheets at this meeting for all products supplied and maintain these Safety Data Sheets available for worker's examination on location in compliance with WHIMIS regulations. All Safety meetings will be recorded on the daily reports.

Whenever possible, plan and conduct all workover procedures in a manner which will avoid the mixing of air & hydrocarbons in the well bore and connected surface piping. If mixing does occur, purge prior to pressurizing or exposing mixture to any other possible source of ignition.

All applicable regulations, including, but not limited to the NWT Office of the Regulator of Oil and Gas Operations (OROGO) and Occupational Health and Safety regulations, are to be strictly adhered to. Written instructions must be posted in the doghouse or other conspicuous area prior to the wellsite supervisor leaving the lease. Wellsite supervisor must designate, in writing, a competent person to carry out principal contractor's responsibilities. All verbal notifications and approvals from government regulatory agencies will be recorded on the daily report. The name of the individual contacted, and the subject matter of approval or notification should be recorded on the same.

January 12, 2023

REGULATORY:

OROGO regulations require that the Well Approval as signed by the regulator must be posted in a clearly visible location on the work site. The well approval, its additional terms, and this well abandonment program must be precisely followed. Any deviations from the program must be approved by OROGO and clearly documented on the morning report. Include the time, name of person approving changes, and the important points of the phone conversation.

ABANDONMENT PROGRAM:**Pre-Operations Notifications:**

1. Notify the Area Foreman 48 hours before operations to begin.

Mobilize and Inspections:

2. Mobilize to location and inspect access. Ensure that access is clear to allow two-way traffic in and out of the site.
3. Hold and record a safety and procedure meeting with all personnel on location. Perform a walk around inspection to ensure no hazards on the site. Document meeting topics and prepare a site-specific ERP.
4. Disassemble the SCVF piping and ensure that it is not blocked. Re assemble the piping and install a bottle and hose type tester. Watch tester and ensure there are no bubbles in 10 minutes. Document test on daily report and on the "Surface Casing Vent Flow" form. If using a non-freezing liquid (example windshield washer fluid) for the test, document the liquid used and the density.

Circulate well with coil tubing

5. Mobilize and move in a coil tubing unit with Class III BOP system, mobile boiler, water truck, and catch tank.
6. Hold and record a safety and procedure meeting with all personnel on location. Perform a walk around inspection to ensure no hazards on the site. Document meeting topics and prepare a site-specific ERP
7. Rig in circulating lines to pressure tank and floc tank. Ensure lines are staked and the lines and manifold are pressure tested to 1400 kPa and 21,000 kPa for 10 minutes each.

January 12, 2023

8. Stump test the BOP stack. Test the ram preventors to 1400 kPa low and 21,000 kPa high for 10 minutes each. Test the annular preventors to 1400 kPa low and 7000 kPa high, 10 minutes each. Review and function test the accumulator system.
9. Bleed off trapped pressure in well to the pressure tank. If well does not bleed down, then contact Calgary office immediately.
10. Break down wellhead and install BOP stack. Pressure test the BOP stack connections to 1400 kPa and 21,000 kPa for 10 minutes each.
11. Rig in coil tubing injector.
12. Run in with coil tubing and tag existing plug back at +/- 1489.5 mKB. Pick up 0.25 meters.
13. Forward circulate well over to fresh water, over displace by 2 m³ to ensure well is clean. Direct returns through pressure tank and to floc tank.
14. Pull out of hole with coil tubing.
15. Close blind rams and pressure test well to 7000 kPa for 10 minutes. Bleed off pressure to the pressure tank. Open the blind rams.
16. Rig out the coil tubing injector.
17. Rig out the BOP system and reinstall the wellhead.
18. Rig out the coil tubing unit. Clean out the floc tank and transfer recovered fluids to the slop tank at the battery for transfer to Alberta disposal.
19. Ensure lease is cleaned of all garbage and debris. Demobilize all equipment. Proceed to the "Wellhead cut and cap" section.

Wellhead Cut and Cap

20. Move in waterjet cut and cap crew and equipment.
21. Hold and record a safety and procedure meeting with all personnel on location. Perform a walk around inspection to ensure no hazards on the site. Document meeting topics and prepare a site-specific ERP.
22. Install a bottle and hose type tester on the vent assembly. Watch tester and ensure there are no bubbles in 10 minutes. Document test on daily report and on the

January 12, 2023

- “Surface Casing Vent Flow” form. If using a non-freezing liquid (example windshield washer fluid) for the test, document the liquid used and the density.
23. Rig in the waterjet cut and cap crew. Cut and cap the well 1.5 meters below ground level following the waterjet company procedures. Take pictures of the well before the cut, with the wellhead removed, the cut surface, and the vented cap before and during instillation.
 24. Backfill open excavation. Photograph the backfill.
 25. Install abandoned well sign 1 meter north of the well. Sign is to meet the requirements as outlined in the attachment.
 26. Release all services. Field operations are complete.

Final Reporting

27. Prepare a final downhole diagram showing the final well configuration
28. Ensure that all tickets and costs are recorded on the morning reports. If a vendor has not submitted their tickets, then put in an estimated cost.
29. Tickets are to be coded with the well name, AFE number, date, and field supervisor’s signature. Ensure vendors electronically send all invoices to

ELM Inc.
#1000, 205 – 5th Avenue SW
Calgary AB T2P 2V7
AP@elminc.ca

January 12, 2023

Elm Inc. Terms of Service:

1. The price estimate for this well is presented as a most probable cost based on similar repair operations and is to be used for AFE purposes only. This estimate is only as good as the information provided to Elm. Elm will co-ordinate and supervise the entire operation, pay all third party services and submit a final invoice based on actual costs incurred for equipment and services. Depending on the complexity of the abandonment, location and age of the well, Elm recommends adding 10-25% contingency to the estimates attached.
2. This estimate does not contain any lease clean up costs other than back filling around the wellhead after it has been cut off. If requested Elm's Reclamation Division will perform a site assessment that will be used to determine a cost estimate for surface reclamation. A preferential price to do the site assessment will be given if done in conjunction with the downhole abandonment.
3. Elm does not accept any liability for the well, lease, facility and or property it is working on. Elm acts as an independent consultant, providing mainly consulting and supervision services, with some specialized equipment included.
4. Elm will accept liability for the proper placement of bridge plugs and / or cement plugs that we set, however we do not accept liability for any unforeseen or unmentioned down hole problems. This would include failure of the casing to pressure test, collapsed casing, stuck pipe, tubing or rods, scale and or wax build up, surface casing vent flows, gas migration etc.
5. Elm does accept the responsibility of Prime Contractor for sites that have an agreement assigning the Prime Contractor Status.
6. The cost estimate included services and third party costs as listed, if other services are required they will be billed as per our cost schedule. The client will be informed of any costs to be incurred outside of this summary prior to the work being done. These services usually include: disposal costs, stuck and towing or cat work for access, rental and / or trucking of work strings, trucking of tubing, rods, and / or well heads, sour service, required safety equipment and extra charges associated working in hot or cold temperatures.

Elm's objective is to offer the safest and most efficient abandonment while saving the operator both time and money. We feel that by working with you on this project, we can achieve our goals and maintain the high level of professionalism that is reflected in the end product.

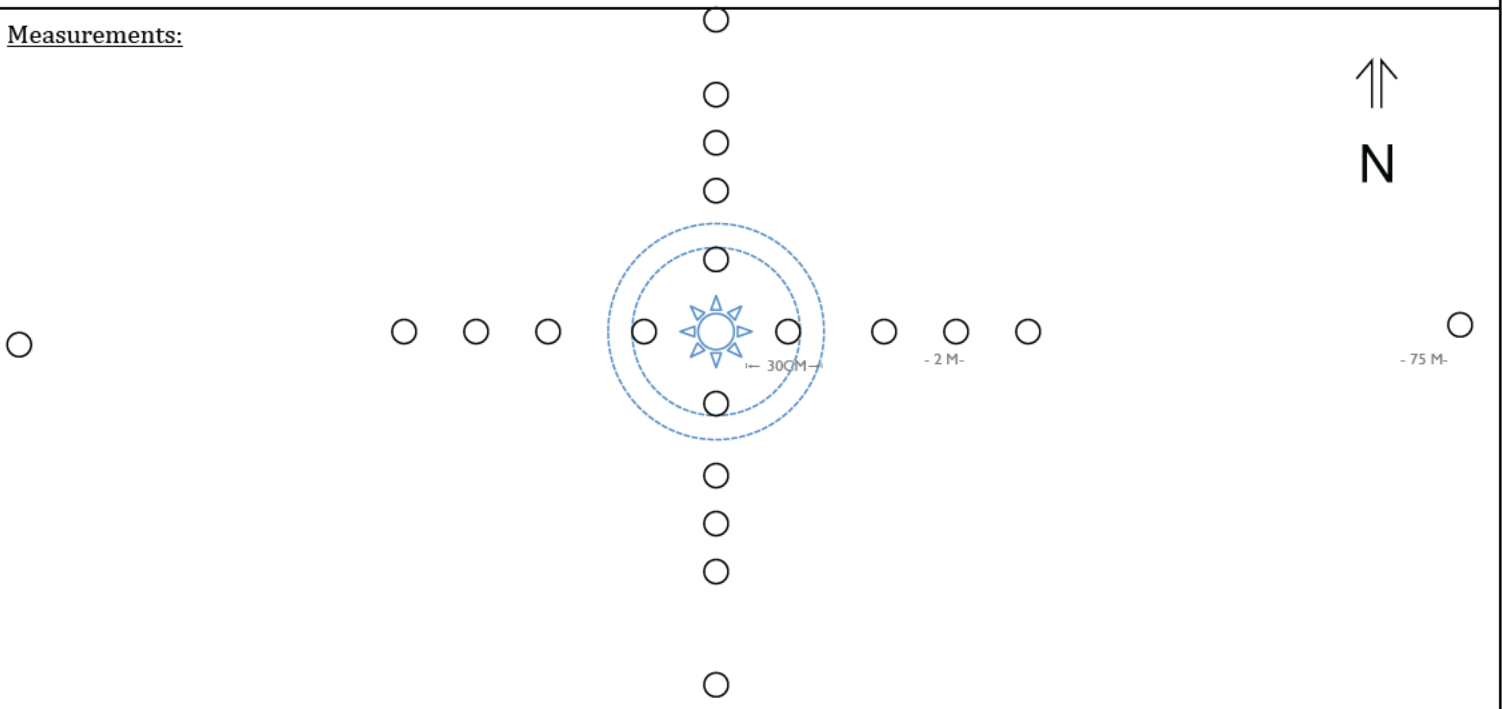
GAS MIGRATION TEST



CLIENT		STRATEGIC OIL & GAS LTD.									
TEST DATE		SEPTEMBER 26 TH , 2017		TEST TIME START		17:50					
WELL LICENCE		300A036010117300		UWI		2047					
WELL LOCATION		STRATEGIC ETAL CAMERON A-03		TESTED BY		FRANCO LLOYD					
WELL LAT		60.03685		LONG		-117.50160					
GAS MIGRATION FOUND				YES <input type="checkbox"/> NO <input checked="" type="checkbox"/>							
TESTING EQUIPMENT				WEATHER CONDITIONS				SAMPLE METHOD			
MODEL		GMI GT-43		TEMPERATURE		+ 12		AUGER	BAR		
S/N		614871		SKY CONDITIONS		CLEAR		<input checked="" type="checkbox"/>	<input type="checkbox"/>		
CALIBRATION* DATE		September 7, 2017		PRECIPITATION		NIL		<input checked="" type="checkbox"/>	<input type="checkbox"/>		
*CALIBRATED TO DETECT HYDROCARBON AT A MINIMUM OF 1% LEL			TEST PROCEDURE								
LEASE INFORMATION		YES	NO	<ul style="list-style-type: none"> LOCATE WELLHEAD/CASING STUB, IF WELLHEAD/CASING STUB IS NOT PRESENT - LOCATED BURIED ABANDONED WELLBORE USING METAL DETECTOR / PIN LOCATOR 							
WELLHEAD / CASING STUB		<input checked="" type="checkbox"/>	<input type="checkbox"/>	<ul style="list-style-type: none"> AUGURED AND/OR BAR 2 X 30MM DIAMETER X APPROX. 60CM DEEP HOLES ON OPPOSITE SIDES APPROX. 30 CM OF WELLBORE CENTER 							
VISIBLE STAINING / VEGETATION STRESS		<input type="checkbox"/>	<input checked="" type="checkbox"/>	<ul style="list-style-type: none"> AUGURED 3 X 30MM DIAMETER X APPROX. 60CM DEEP HOLES AT 90 DEGREE INTERVALS (CROSS PATTERN) AT APPROX. 2M INTERVAL TO A DISTANCE OF 6M FROM WELLBORE CENTER 							
OPEN SUMPS		<input type="checkbox"/>	<input checked="" type="checkbox"/>	<ul style="list-style-type: none"> PERFORM GAS MEASUREMENT EQUIPMENT CHECK 							
NOXIOUS WEEDS		<input type="checkbox"/>	<input checked="" type="checkbox"/>	<ul style="list-style-type: none"> INSERTED A 30CM PROBE INTO EACH HOLE THAT IS ISOLATE FROM ATMOSPHERIC CONTAMINATIONS 							
SURFACE CONDITION		WET <input type="checkbox"/>	DRY <input checked="" type="checkbox"/>	<ul style="list-style-type: none"> WITHDREW SOIL GAS SAMPLE, RECORDED GAS SAMPLE OBSERVATIONS, PURGE INSTRUMENT AND LINES AND REPEATED FOR EACH HOLE 							
ACCESS		ALL SEASON <input type="checkbox"/>	DRY <input type="checkbox"/>	<input type="checkbox"/>	WINTER <input checked="" type="checkbox"/>	<ul style="list-style-type: none"> IDENTIFIED ANY STAINED OR STRESSED VEGETATION WITHIN 75M COMPLETED GAS MIGRATION TESTING 					
VEGETATION COVERAGE		GRASS <input checked="" type="checkbox"/>		ASPEN/WILLOW <input type="checkbox"/>		CONIFEROUS <input type="checkbox"/>		SOIL SAMPLES TAKEN:		Yes <input type="checkbox"/>	No <input checked="" type="checkbox"/>

LEASE DIAGRAM

Measurements:



NOTES:



Alvarez & Marsal Canada ULC
400 Burrard Street, Suite 1680, Commerce Place
Vancouver, BC. V6C 3A6

May 19, 2020

Government of the Northwest Territories
Office of the Regulator of Oil and Gas Operations (OROGO)
P.O. Box 1320, Yellowknife, NT X1A 2L9

Attention: Pauline de Jong, Chief Conservation Officer

Via Email: orogo@gov.nt.ca

Well Operations Report – Cameron Hills A-03 Well (ACW-2019-005-SOG-A-03-WID2047)

In response to OROGO's Letter dated May 19, 2020. Alvarez & Marsal Canada ULC response dated May 19, 2020 hereby provides OROGO with the following requested information:

This cover letter and the affiliated well operations reporting for operations conducted to suspend the subject well, including; A summary of well operations, daily operation reports and a current well diagram. In separate attachments are the Cement Bond Log and interpretation documents.

We trust the foregoing to be in order however, should you require additional information, please contact the undersigned at mbujold@energyworks.management or 403.606.4220.

Sincerely, on behalf of Alvarez & Marsal Canada ULC

A handwritten signature in blue ink, appearing to read "Maurice Bujold".

Maurice Bujold

VP, Completions, Energy Works Management

cc. Orest Knonwalchuk, Managing Director, A&M
Viki Chan, Vice President, Alvarez & Marsal Canada ULC
Sean David, Sr. Completions Engineer, Energy Works Management

Encl.



Well Suspension Summary
STRATEGIC ET AL CAMERON A-03 60 10N, 117 30W • #2047

WELL DATA				
NAME	LICENSE #	COST CENTRE	UWI	LOCATION
STRATEGIC ET AL CAMERON A-03 60 10N, 117 30W	2047			Cameron Hills NT, Canada
COMPLETIONS DETAIL				
COMPLETIONS TYPE	START DATE	FINISH DATE	OBJECTIVE	
Standing Cased	2020-03-03	2020-03-15	Well Suspension	
JOB SUMMARY				
Injection well - suspend Well, inhibit fluid in well bore with freeze protection at top of well				

DRILLING DATA						
DRILLING GENERAL						
EVENT	DRILLING START	SPUD DATE	RELEASE DATE			
Drilling						
SURFACE HOLE						
LATITUDE	LONGITUDE					
0.00000000	0.00000000					
WELLBORES						
Original Hole						
START						END
-						-
LATITUDE						LONGITUDE
0.00000000						0.00000000
UWI						
KICKOFF	HEEL	PROJECTED	MEASURED	TVD	LOGGER	
-	-	-	-	-		
DRILLING ELEVATIONS						
SURVEYED	CUT / FILL	GROUND	KB > GROUND	KB	CF > GROUND	CF
767.40 m	0.00 m	767.40 m	5.40 m	772.80 m	0.00 m	767.40 m
BRIDGE PLUG						
MANUFACTURER	MODEL		SET DEPTH		BACK DEPTH	
			-		-	
CASING BOWL						
TYPE	MAKE		SERIAL #		CASING SIZE	
WORK PRESSURE	WEIGHT LANDED		NOMINAL SIZE		SLIP & SEAL ASSM	
			-			

WELL SUSPENSION DETAILS						
ELEVATIONS					BOTTOM HOLE	
GROUND	KB > GROUND	KB	CF > GROUND	CF	ESTIMATED TEMP	ESTIMATED PRESS
767.40 m	5.40 m	772.80 m	0.00 m	767.40 m	-	-
TH > GROUND	KB > TH	DH > GROUND	KB > DH		ESTIMATED H2S	ESTIMATED CO2
-	5.40 m	-	5.40 m		-	-
COMPLETIONS RIGS					DAILY STATISTICS	
CONTRACTOR	#	START	RELEASE		TOTAL RENTALS	RIG TIME
		No rig records defined			-	5.00 hr
FLUIDS					MAN HOURS	% COMPLETE
FLUID	TANK	TO WELL	FROM WELL	IN WELL	0.00 hr	0.00%
LOAD FLUID		0.00 m³		0.00 m³		
Fresh water	35.00 m³	-	-	0.00 m³		
	TOTAL	0.00 m³	0.00 m³			

RECENT DAILY OPERATIONS - 2020-03-15
DAILY STATUS Decommission A 03 pipe line
24 HOUR SUMMARY Attempt to suspend flowline, pipeline froze below ground.
NEXT 24 HOURS



STRATEGIC ET AL CAMERON A-03 60 10N, 117 30W - Well Suspension Daily Reports
STRATEGIC ET AL CAMERON A-03 60 10N, 117 30W • #2047

WELL DATA				
NAME	LICENSE #	LOCATION	EVENT	AFE NUMBER
STRATEGIC ET AL CAMERON A-03 60 10N, 117 30W	2047	Cameron Hills NT, Canada	Well Suspension	20EWM-AB-003
COMPLETION TYPE	START DATE	END DATE	OBJECTIVE	
Standing Cased	2020-03-03	2020-03-15	Well Suspension	
COMPLETIONS DAILY REPORTS				
DATE	SUMMARY			
2020-03-03	Lift shack off of well head and spot on corner of lease			
2020-03-05	haul in sand around well head			
2020-03-06	Mob in.			
2020-03-07	Strip on BOPs, pressure test. SCVF check, no flow. Unseat seal assembly, POOH tubing. RIH, set BP.			
2020-03-08	Complete rig out and release services			
2020-03-09	De mobilize equipment back to High Level			
2020-03-10	OROGO Inspection			
2020-03-11	Wait on Decision to abandon			
2020-03-12	Conduct Radial Cement bond log			
2020-03-13	Inhibit and winterize casing			
2020-03-15	Attempt to suspend flowline, pipeline froze below ground.			



Daily Well Suspension Report - 2020-03-13 - Day #10
STRATEGIC ET AL CAMERON A-03 60 10N, 117 30W • #2047

WELL DATA								
LICENSE #	UWI		EVENT		AFE NUMBER	AFE \$		
2047			Well Suspension		20EWM-AB-003			
GROUND ELE	KB > GROUND	KB ELE	CF > GROUND	TH > GROUND	KB > TH	DH > GROUND	KB > DH	
767.40 m	5.40 m	772.80 m	0.00 m	-	5.40 m	-	5.40 m	
REPORT DETAILS								
REPORT DATE	PERCENT COMPLETE	RIG TIME	TOTAL RIG TIME	MAN HOURS	TOTAL MAN HOURS			
2020-03-13	-	-	5.00 hr	-	0.00 hr			
TOTAL TIME	NON-PRODUCTIVE	FLARE VOLUME	TOTAL DAILY FLARE	CASING PRESSURE	TUBING PRESSURE			
1.00 hr	0.00 hr	-	0.00 e³m³	-	-			
DAILY OPERATIONS					WEATHER			
DAILY STATUS Inhibit and winterize casing					GENERAL			
-					-			
24 HOUR SUMMARY Inhibit and winterize casing					ROAD CONDITION			
-					-			
NEXT 24 HOURS Suspend flowline					TIME	TEMP		
-					-			
TIME LOG								
FROM	TO	DUR	NPT CODE	DETAILS				
11:30	12:30	1.0 h		Held safety meeting, review hazards MSDS of CPF-119WT PPE requirements pressures and pump fill rates. SICIP 0 Loaded 90 liters of PureChem CPF-119WT inhibitor and 100 liters 50/50 methanol water mixed filled casing pressured up to 200 kpa bled off pressure to 0 secured well head chained and locked masters and casing valves.				
DAILY FLUIDS								
COMPANY	TICKET	SOURCE/DESTINATION	LEASE		WELL		REMAINING	
			TO	FROM	TO	FROM	TANK	WELL
"Fresh water"								
			TODAY	0.00 m³	0.00 m³	0.00 m³	0.00 m³	0.00 m³
			RUNNING	35.00 m³	0.00 m³	0.00 m³	0.00 m³	35.00 m³
								0.00 m³



Daily Well Suspension Report - 2020-03-12 - Day #9
STRATEGIC ET AL CAMERON A-03 60 10N, 117 30W • #2047

WELL DATA								
LICENSE #	UWI	EVENT		AFE NUMBER		AFE \$		
2047		Well Suspension		20EWM-AB-003				
GROUND ELE	KB > GROUND	KB ELE	CF > GROUND	TH > GROUND	KB > TH	DH > GROUND	KB > DH	
767.40 m	5.40 m	772.80 m	0.00 m	-	5.40 m	-	5.40 m	
REPORT DETAILS								
REPORT DATE	PERCENT COMPLETE	RIG TIME	TOTAL RIG TIME	MAN HOURS	TOTAL MAN HOURS			
2020-03-12	-	-	5.00 hr	-	0.00 hr			
TOTAL TIME	NON-PRODUCTIVE	FLARE VOLUME	TOTAL DAILY FLARE	CASING PRESSURE	TUBING PRESSURE			
5.00 hr	0.00 hr	-	0.00 e³m³	-	-			
DAILY OPERATIONS					WEATHER			
DAILY STATUS					GENERAL			
Logging					-25 with brisk wind			
24 HOUR SUMMARY					ROAD CONDITION			
Conduct Radial Cement bond log					Winter ice roads - good			
NEXT 24 HOURS					TIME	TEMP		
						-24°C		
TIME LOG								
FROM	TO	DUR	NPT CODE	DETAILS				
13:00	18:00	5.0 h		Hold operational safety meeting and issue safe work permit. Conduct a Radial cement bond log high speed pass to 1480 mKB. Tag fluid level @ 35 mKB. Conduct main pass coming out of hole. Field estimated Cement to surface. Rig out Spectrum and release. Install Wind sock and chain well head valves.				
DAILY FLUIDS								
COMPANY	TICKET	SOURCE/DESTINATION	LEASE		WELL		REMAINING	
			TO	FROM	TO	FROM	TANK	WELL
"Fresh water"								
			TODAY	0.00 m³	0.00 m³	0.00 m³	0.00 m³	0.00 m³
			RUNNING	35.00 m³	0.00 m³	0.00 m³	0.00 m³	35.00 m³



Daily Well Suspension Report - 2020-03-11 - Day #8
STRATEGIC ET AL CAMERON A-03 60 10N, 117 30W • #2047

WELL DATA								
LICENSE #	UWI	EVENT			AFE NUMBER	AFE \$		
2047		Well Suspension			20EWM-AB-003			
GROUND ELE	KB > GROUND	KB ELE	CF > GROUND	TH > GROUND	KB > TH	DH > GROUND	KB > DH	
767.40 m	5.40 m	772.80 m	0.00 m	-	5.40 m	-	5.40 m	
REPORT DETAILS								
REPORT DATE	PERCENT COMPLETE	RIG TIME	TOTAL RIG TIME	MAN HOURS	TOTAL MAN HOURS			
2020-03-11	-	-	5.00 hr	-	0.00 hr			
TOTAL TIME	NON-PRODUCTIVE	FLARE VOLUME	TOTAL DAILY FLARE	CASING PRESSURE	TUBING PRESSURE			
7.25 hr	0.00 hr	-	0.00 e³m³	-	-			
DAILY OPERATIONS					WEATHER			
DAILY STATUS Wait on Decision to abandon					GENERAL			
24 HOUR SUMMARY Wait on Decision to abandon					-			
NEXT 24 HOURS Perform Cement bond logs on A-03 and J-62					ROAD CONDITION			
					-			
					TIME		TEMP	
					-			
TIME LOG								
FROM	TO	DUR	NPT CODE	DETAILS				
08:00	15:15	7.25 h		Travel to C-74, C-75, F-73, H-03 and install windsock and chain as directed. Wait on E line services				
DAILY FLUIDS								
COMPANY	TICKET	SOURCE/DESTINATION	LEASE		WELL		REMAINING	
			TO	FROM	TO	FROM	TANK	WELL
"Fresh water"								
			TODAY	0.00 m³	0.00 m³	0.00 m³	0.00 m³	0.00 m³
			RUNNING	35.00 m³	0.00 m³	0.00 m³	0.00 m³	35.00 m³
								0.00 m³



Daily Well Suspension Report - 2020-03-10 - Day #7
STRATEGIC ET AL CAMERON A-03 60 10N, 117 30W • #2047

WELL DATA								
LICENSE #	UWI	EVENT		AFE NUMBER		AFE \$		
2047		Well Suspension		20EWM-AB-003				
GROUND ELE	KB > GROUND	KB ELE	CF > GROUND	TH > GROUND	KB > TH	DH > GROUND	KB > DH	
767.40 m	5.40 m	772.80 m	0.00 m	-	5.40 m	-	5.40 m	
REPORT DETAILS								
REPORT DATE	PERCENT COMPLETE	RIG TIME	TOTAL RIG TIME	MAN HOURS	TOTAL MAN HOURS			
2020-03-10	-	-	5.00 hr	-	0.00 hr			
TOTAL TIME	NON-PRODUCTIVE	FLARE VOLUME	TOTAL DAILY FLARE	CASING PRESSURE	TUBING PRESSURE			
6.92 hr	0.00 hr	-	0.00 e³m³	-	-			
DAILY OPERATIONS					WEATHER			
DAILY STATUS					GENERAL			
Wait on Decision to abandon					-			
24 HOUR SUMMARY					ROAD CONDITION			
OROGO Inspection					-			
NEXT 24 HOURS					TIME	TEMP		
					-			
TIME LOG								
FROM	TO	DUR	NPT CODE	DETAILS				
10:00	16:55	6.92 h		OROGO inspectors, Brain, Mike and Peter arrive on location and inspect 3 sites.				
DAILY FLUIDS								
COMPANY	TICKET	SOURCE/DESTINATION	LEASE		WELL		REMAINING	
			TO	FROM	TO	FROM	TANK	WELL
"Fresh water"								
			TODAY	0.00 m³	0.00 m³	0.00 m³	0.00 m³	0.00 m³
			RUNNING	35.00 m³	0.00 m³	0.00 m³	0.00 m³	35.00 m³
								0.00 m³



Daily Well Suspension Report - 2020-03-09 - Day #6
STRATEGIC ET AL CAMERON A-03 60 10N, 117 30W • #2047

WELL DATA								
LICENSE #	UWI	EVENT		AFE NUMBER	AFE \$			
2047		Well Suspension		20EWM-AB-003				
GROUND ELE	KB > GROUND	KB ELE	CF > GROUND	TH > GROUND	KB > TH	DH > GROUND	KB > DH	
767.40 m	5.40 m	772.80 m	0.00 m	-	5.40 m	-	5.40 m	
REPORT DETAILS								
REPORT DATE	PERCENT COMPLETE	RIG TIME	TOTAL RIG TIME	MAN HOURS	TOTAL MAN HOURS			
2020-03-09	-	-	5.00 hr	-	0.00 hr			
TOTAL TIME	NON-PRODUCTIVE	FLARE VOLUME	TOTAL DAILY FLARE	CASING PRESSURE	TUBING PRESSURE			
9.00 hr	0.00 hr	-	0.00 e³m³	-	-			
DAILY OPERATIONS					WEATHER			
DAILY STATUS					GENERAL			
24 HOUR SUMMARY					-			
De mobilize equipment back to High Level					ROAD CONDITION			
NEXT 24 HOURS					-			
					TIME			
					TEMP			
					-			
TIME LOG								
FROM	TO	DUR	NPT CODE	DETAILS				
08:00	17:00	9.0 h		Picker truck to load good TBG and put on pipe rack at H-03, De mobile equipment back to High Level. Return Chemicals back to Baker. Load shack and spot at H-03 beside pipe racks. NWT inspectors Norman and Jayda inspect A-03, J-62, I-73. Good inspection. Install thread compound and install thread protectors on TBG. Haul junk TBG to High level (Arnold Enterprises) for resale as per instructed				
DAILY FLUIDS								
COMPANY	TICKET	SOURCE/DESTINATION	LEASE		WELL		REMAINING	
			TO	FROM	TO	FROM	TANK	WELL
"Fresh water"								
			TODAY	0.00 m³	0.00 m³	0.00 m³	0.00 m³	0.00 m³
			RUNNING	35.00 m³	0.00 m³	0.00 m³	0.00 m³	35.00 m³
								0.00 m³



Daily Well Suspension Report - 2020-03-08 - Day #5
STRATEGIC ET AL CAMERON A-03 60 10N, 117 30W • #2047

WELL DATA									
LICENSE #	UWI	EVENT		AFE NUMBER		AFE \$			
2047		Well Suspension		20EWM-AB-003					
GROUND ELE	KB > GROUND	KB ELE	CF > GROUND	TH > GROUND	KB > TH	DH > GROUND	KB > DH		
767.40 m	5.40 m	772.80 m	0.00 m	-	5.40 m	-	5.40 m		
REPORT DETAILS									
REPORT DATE	PERCENT COMPLETE	RIG TIME	TOTAL RIG TIME	MAN HOURS	TOTAL MAN HOURS				
2020-03-08	-	-	5.00 hr	-	0.00 hr				
TOTAL TIME	NON-PRODUCTIVE	FLARE VOLUME	TOTAL DAILY FLARE	CASING PRESSURE	TUBING PRESSURE				
17.00 hr	0.00 hr	-	0.00 e³m³	-	-				
DAILY OPERATIONS					WEATHER				
DAILY STATUS Pull pipe and lay down tubing					GENERAL				
24 HOUR SUMMARY Complete rig out and release services					-				
NEXT 24 HOURS Move Tubing and set up pipe racks					ROAD CONDITION				
					-				
					TIME		TEMP		
							-		
TIME LOG									
FROM	TO	DUR	NPT CODE	DETAILS					
00:00	01:00	1.0 h		Filled casing to pressure test the plug pumped 3.5 m3 to fill casing pressured up to 7.0 mpa for a 15 min isolation test (HELD SOLID) Beld off pressure to 0. Picked 0.5 m3 batch mixed 250 liters of class G 1890 kg/m cement filled tubing displaced tubing with 4.4 m3 of fresh water spotting cement pulled 3 joints circulated 1.5 times hole volume.					
01:00	07:00	6.0 h		Pulled 73 mm work string out laying tubing down filling hole displacement tripping out pulled 130 joins crew chenge					
07:00	17:00	10.0 h		Continue to pull out of hole laying down TBG. Tank truck to suck out rig tank, boiler fluids and haul to Tervita Rainbow Lake for disposal. Vac truck to clean rig tank and haul to Tervita Rainbow Lake for Disposal. Haul matting and 400 BBI tank to High level - released rentals.					
DAILY FLUIDS									
COMPANY	TICKET	SOURCE/DESTINATION	LEASE		WELL		REMAINING		
			TO	FROM	TO	FROM	TANK	WELL	
"Fresh water"									
			TODAY	0.00 m³	0.00 m³	0.00 m³	0.00 m³	0.00 m³	0.00 m³
			RUNNING	35.00 m³	0.00 m³	0.00 m³	0.00 m³	35.00 m³	0.00 m³



Daily Well Suspension Report - 2020-03-07 - Day #4
STRATEGIC ET AL CAMERON A-03 60 10N, 117 30W • #2047

WELL DATA									
LICENSE #	UWI	EVENT		AFE NUMBER		AFE \$			
2047		Well Suspension		20EWM-AB-003					
GROUND ELE	KB > GROUND	KB ELE	CF > GROUND	TH > GROUND	KB > TH	DH > GROUND	KB > DH		
767.40 m	5.40 m	772.80 m	0.00 m	-	5.40 m	-	5.40 m		
REPORT DETAILS									
REPORT DATE	PERCENT COMPLETE	RIG TIME	TOTAL RIG TIME	MAN HOURS	TOTAL MAN HOURS				
2020-03-07	-	-	5.00 hr	-	0.00 hr				
TOTAL TIME	NON-PRODUCTIVE	FLARE VOLUME	TOTAL DAILY FLARE	CASING PRESSURE	TUBING PRESSURE				
24.00 hr	0.00 hr	-	0.00 e³m³	-	-				
DAILY OPERATIONS				WEATHER					
DAILY STATUS Rig on hole, pulling tubing				GENERAL Light snow 10 k North wind					
24 HOUR SUMMARY Strip on BOPs, pressure test. SCVF check, no flow. Unseat seal assembly, POOH tubing. RIH, set BP.				ROAD CONDITION Winter ice roads good shape					
NEXT 24 HOURS				TIME	TEMP				
				00:00	31°C				
TIME LOG									
FROM	TO	DUR	NPT CODE	DETAILS					
00:00	00:30	0.5 h		Stopped for lunch and warm up and tail gate safety meeting, Topics Well kill, removing flow line and top section of the well head.					
00:30	04:30	4.0 h		Removed flow, Stump tested BOP blind rams to 1.4 mpa and 21 mpa 10 min on each test bled off pressure, Pressure test pipe rams and TIW valve to 1.4 mpa and 21.0 mpa bled off pressure, 10 min on each test, tested Hydril to 1.4 and 7.0 mpa 10 min on each test bled off pressure. Tied pump line in to well head Pressure tested line to 1.4 and 14 mpa. bled off pressure to 0.5 mpa opened master valve pumped 50 liters pressured up to a solid 5 mpa bled off pressure monitored tubing and casing. Removed top section to inspect the tubing hanger, cleaned out threads installed handling pup and TIW valve.					
04:30	07:00	2.5 h		Crew warmed up nipped up BOP's pressure tested ring gasket to 1.4 and 21 mpa 10 min on each test bled off pressure drained pump and lines rigged up work floor					
07:00	07:30	0.5 h		Hold operational safety meeting and issue safe work permits. Review new ERP, Emergency Transport plan and Site orientation.					
07:30	07:50	0.33 h		Perform 10 minute bubble test on SCV. Zero bubbles and Zero LEL's					
07:50	11:45	3.92 h		Rotate TBG and come off of packer with seal assembly. (Numerous attempts) Pump 5 m³ fresh water down CSG and could not catch pressure. TBG is full to surface. Pump down TBG and pressured up to 7 mPa. Bleed off. Pull out of hole and break out handling pup and TBG hanger. (Order mud can and vac truck) Pump down TBG and pressure up moving pipe in increments up to 9 mPa and established a slight bleed off. Pump down CSG pumping 6 m³ and we started establish light circulation. Increased pump rate and circulation increased to full circulation. pumped additional TBG volume until clean. TBG and CSG on Vacuum.					
11:45	13:00	1.25 h		Pull out of hole with TBG laying down. Perform BOP drill with all on location. - Good drill securing well and to Muster #! in 1 minute and 28 seconds. Review drill with crew . Lunch break and warm up.					
13:00	16:00	3.0 h		Continue to pull out of hole laying down a total of 158 joints. and seal assembly.					
16:00	19:00	3.0 h		Tally, make up and run in hole with Koppe 10 K Permanent Bridge plug, and 48 joints tubing Vac truck arrives and sucks out testing vessel (Release testers) and barrel at H-03 as per Norman with NWT Government Crew change and hand over.					
19:00	19:15	0.25 h		Crew Change hand over safety meeting with all personal					
19:15	00:00	4.75 h		Continued in the hole with Bridge plug tallying and drifting tubing marking collars at 1505.2 and 1509.7 mkb metered plug in to place placing CE @ 1509.5 mkb pressured tubing up to 14.0 mpa set plug as programed.					
DAILY FLUIDS									
COMPANY	TICKET	SOURCE/DESTINATION	LEASE		WELL		REMAINING		
			TO	FROM	TO	FROM	TANK	WELL	
"Fresh water									
pinnacle services		Lake #3	25.00 m³				35.00 m³	0.00 m³	
			TODAY	25.00 m³	0.00 m³	0.00 m³	0.00 m³	25.00 m³	0.00 m³
			RUNNING	35.00 m³	0.00 m³	0.00 m³	0.00 m³	35.00 m³	0.00 m³



Daily Well Suspension Report - 2020-03-06 - Day #3
STRATEGIC ET AL CAMERON A-03 60 10N, 117 30W • #2047

WELL DATA									
LICENSE #	UWI		EVENT		AFE NUMBER		AFE \$		
2047			Well Suspension		20EWM-AB-003				
GROUND ELE	KB > GROUND	KB ELE	CF > GROUND	TH > GROUND	KB > TH	DH > GROUND	KB > DH		
767.40 m	5.40 m	772.80 m	0.00 m	-	5.40 m	-	5.40 m		
REPORT DETAILS									
REPORT DATE	PERCENT COMPLETE	RIG TIME	TOTAL RIG TIME	MAN HOURS	TOTAL MAN HOURS				
2020-03-06	0%	5.00 hr	5.00 hr	0.00 hr	0.00 hr				
TOTAL TIME	NON-PRODUCTIVE	FLARE VOLUME	TOTAL DAILY FLARE	CASING PRESSURE	TUBING PRESSURE				
5.00 hr	0.00 hr	0.00 e³m³	0.00 e³m³	0.00 kPa	0.00 kPa				
DAILY OPERATIONS							WEATHER		
DAILY STATUS Move PWS 834 on A -03, Spot and Rig in equipment							GENERAL		
-							ROAD CONDITION		
24 HOUR SUMMARY Mob in.							-		
NEXT 24 HOURS							TIME		TEMP
							-		
TIME LOG									
FROM	TO	DUR	NPT CODE	DETAILS					
19:00	19:45	0.75 h		On J 62 Held tailgate safety meeting with all personal moved equipment to A 03. Spotted equipment.					
19:45	00:00	4.25 h		Held daily operations safety meeting with all personal -31 C issued work permit. Rigged in to OROGO & EWM Regulations spotted pump and tank unloaded 21.0 m3 in to rig tank, Laid pump line, laid out accumulator lines, Rigged in boiler line and heaters tarped in well head and pump and manifold, and warmed BOP's placed drip trays under equipment SITP Vacuum SICP Vacuum.					
DAILY FLUIDS									
COMPANY	TICKET	SOURCE/DESTINATION	LEASE		WELL		REMAINING		
			TO	FROM	TO	FROM	TANK	WELL	
"Fresh water"									
longway	66550	j-62 rig tank		10.00 m³				10.00 m³	0.00 m³
			TODAY	10.00 m³	0.00 m³	0.00 m³	0.00 m³	10.00 m³	0.00 m³
			RUNNING	10.00 m³	0.00 m³	0.00 m³	0.00 m³	10.00 m³	0.00 m³



Daily Well Suspension Report - 2020-03-05 - Day #2
STRATEGIC ET AL CAMERON A-03 60 10N, 117 30W • #2047

WELL DATA							
LICENSE #	UWI		EVENT		AFE NUMBER		AFE \$
2047			Well Suspension		20EWM-AB-003		
GROUND ELE	KB > GROUND	KB ELE	CF > GROUND	TH > GROUND	KB > TH	DH > GROUND	KB > DH
767.40 m	5.40 m	772.80 m	0.00 m	-	5.40 m	-	5.40 m
REPORT DETAILS							
REPORT DATE	PERCENT COMPLETE	RIG TIME	TOTAL RIG TIME	MAN HOURS	TOTAL MAN HOURS		
2020-03-05	-	-	0.00 hr	-	0.00 hr		
TOTAL TIME	NON-PRODUCTIVE	FLARE VOLUME	TOTAL DAILY FLARE	CASING PRESSURE	TUBING PRESSURE		
0.00 hr	0.00 hr	-	0.00 e³m³	-	-		
DAILY OPERATIONS					WEATHER		
DAILY STATUS					GENERAL		
24 HOUR SUMMARY					-		
haul in sand around well head					ROAD CONDITION		
NEXT 24 HOURS					-		
					TIME		TEMP
							-



Daily Well Suspension Report - 2020-03-03 - Day #1
STRATEGIC ET AL CAMERON A-03 60 10N, 117 30W • #2047

WELL DATA							
LICENSE #	UWI		EVENT		AFE NUMBER	AFE \$	
2047			Well Suspension		20EWM-AB-003		
GROUND ELE	KB > GROUND	KB ELE	CF > GROUND	TH > GROUND	KB > TH	DH > GROUND	KB > DH
767.40 m	5.40 m	772.80 m	0.00 m	-	5.40 m	-	5.40 m
REPORT DETAILS							
REPORT DATE	PERCENT COMPLETE	RIG TIME	TOTAL RIG TIME	MAN HOURS	TOTAL MAN HOURS		
2020-03-03	-	-	0.00 hr	-	0.00 hr		
TOTAL TIME	NON-PRODUCTIVE	FLARE VOLUME	TOTAL DAILY FLARE	CASING PRESSURE	TUBING PRESSURE		
1.00 hr	0.00 hr	-	0.00 e ³ m ³	-	-		
DAILY OPERATIONS					WEATHER		
DAILY STATUS					GENERAL		
24 HOUR SUMMARY					-		
Lift shack off of well head and spot on corner of lease					ROAD CONDITION		
NEXT 24 HOURS					-		
					TIME		
					TEMP		
					-		
TIME LOG							
FROM	TO	DUR	NPT CODE	DETAILS			
17:30	18:30	1.0 h		Picker truck to lift shack from well head and spot on corner of location			

Time Log Report
STRATEGIC ET AL CAMERON A-03 60 10N, 117 30W • #2047

WELL DATA					
NAME	LICENSE #	COST CENTRE	UWI	LOCATION	
STRATEGIC ET AL CAMERON A-03 60 10N, 117 30W	2047		Unavailable	Cameron Hills NT, Canada	
COMPLETIONS DATA					
NAME	START DATE	END DATE	AFE #	AFE AMOUNT	
Well Suspension	2020-03-03	2020-03-15	20EWM-AB-003	\$0.00	
TIME LOG					
FROM	TO	DUR	NPT	CODE	DETAIL
Completions Daily Report • 2020-03-03					
17:30	18:30	1.00			Picker truck to lift shack from well head and spot on corner of location
		TOTAL	1.00		
Completions Daily Report • 2020-03-05					
		TOTAL	0.00		
Completions Daily Report • 2020-03-06					
19:00	19:45	0.75			On J 62 Held tailgate safety meeting with all personal moved equipment to A 03. Spotted equipment.
19:45	00:00	4.25			Held daily operations safety meeting with all personal -31 C issued work permit. Rigged in to OROGO & EWM Regulations spotted pump and tank unloaded 21.0 m3 in to rig tank. Laid pump line, laid out accumulator lines. Rigged in boiler line and heaters tarped in well head and pump and manifold, and warmed BOP's placed drip trays under equipment SITP Vacuum SICP Vacuum.
		TOTAL	5.00		
Completions Daily Report • 2020-03-07					
00:00	00:30	0.50			Stopped for lunch and warm up and tail gate safety meeting, Topics Well kill, removing flow line and top section of the well head.
00:30	04:30	4.00			Removed flow, Stump tested BOP blind rams to 1.4 mpa and 21 mpa 10 min on each test bled off pressure, Pressure test pipe rams and TIW valve to 1.4 mpa and 21.0 mpa bled off pressure, 10 min on each test, tested Hydril to 1.4 and 7.0 mpa 10 min on each test bled off pressure. Tied pump line in to well head Pressure tested line to 1.4 and 14 mpa. bled off pressure to 0.5 mpa opened master valve pumped 50 liters pressured up to a solid 5 mpa bled off pressure monitored tubing and casing. Removed top section to inspect the tubing hanger, cleaned out threads installed handling pup and TIW valve.
04:30	07:00	2.50			Crew warmed up nipped up BOP's pressure tested ring gasket to 1.4 and 21 mpa 10 min on each test bled off pressure drained pump and lines rigged up work floor
07:00	07:30	0.50			Hold operational safety meeting and issue safe work permits. Review new ERP, Emergency Transport plan and Site orientation.
07:30	07:50	0.33			Perform 10 minute bubble test on SCV. Zero bubbles and Zero LEL's
07:50	11:45	3.92			Rotate TBG and come off of packer with seal assembly. (Numerous attempts) Pump 5 m3 fresh water down CSG and could not catch pressure. TBG is full to surface. Pump down TBG and pressured up to 7 mPa. Bleed off. Pull out of hole and break out handling pup and and TBG hanger. (Order mud can and vac truck) Pump down TBG and pressure up moving pipe in increments up to 9 mPa and established a slight bleed off. Pump down CSG pumping 6 m3 and we started establish light circulation. Increased pump rate and circulation increased to full circulation. pumped additional TBG volume until clean. TBG and CSG on Vacuum.
11:45	13:00	1.25			Pull out of hole with TBG laying down. Perform BOP drill with all on location. - Good drill securing well and to Muster #! in 1 minute and 28 seconds. Review drill with crew . Lunch break and warm up.
13:00	16:00	3.00			Continue to pull out of hole laying down a total of 158 joints. and seal assembly.
16:00	19:00	3.00			Tally, make up and run in hole with Koppe 10 K Permanent Bridge plug, and 48 joints tubing Vac truck arrives and sucks out testing vessel (Release testers) and barrel at H-03 as per Norman with NWT Government Crew change and hand over.
19:00	19:15	0.25			Crew Change hand over safety meeting with all personal
19:15	00:00	4.75			Continued in the hole with Bridge plug tallying and drifting tubing marking collars at 1505.2 and 1509.7 mkb metered plug in to place placing CE @ 1509.5 mkb pressured tubing up ti 14.0 mpa set plug as programed.
		TOTAL	24.00		
Completions Daily Report • 2020-03-08					
00:00	01:00	1.00			Filled casing to pressure test the plug pumped 3.5 m3 to fill casing pressured up to 7.0 mpa for a 15 min isolation test (HELD SOLID) Beld off pressure to 0. Picked 0.5 m3 batch mixed 250 liters of class G 1890 kg/m cement filled tubing displaced tubing with 4.4 m3 of fresh water spotting cement pulled 3 joints circulated 1.5 times hole volume.
01:00	07:00	6.00			Pulled 73 mm work string out laying tubing down filling hole displacement tripping out pulled 130 joins crew change
07:00	17:00	10.00			Continue to pull out of hole laying down TBG. Tank truck to suck out rig tank, boiler fluids and haul to Tervita Rainbow Lake for disposal. Vac truck to clean rig tank and haul to Tervita Rainbow Lake for Disposal. Haul matting and 400 BBI tank to High level - released rentals.
		TOTAL	17.00		
Completions Daily Report • 2020-03-09					
08:00	17:00	9.00			Picker truck to load good TBG and put on pipe rack at H-03, De mobile equipment back to High Level. Return Chemicals back to Baker. Load shack and spot at H-03 beside pipe racks. NWT inspectors Norman and Jayda inspect A-03, J-62, I-73. Good inspection. Install thread compound and install thread protectors on TBG. Haul Junk TBG to High level (Arnold Enterprises) for resale as per instructed
		TOTAL	9.00		
Completions Daily Report • 2020-03-10					
10:00	16:55	6.92			OROGO inspectors, Brain, Mike and Peter arrive on location and inspect 3 sites.
		TOTAL	6.92		
Completions Daily Report • 2020-03-11					
08:00	15:15	7.25			Travel to C-74, C-75, F-73, H-03 and install windsock and chain as directed. Wait on E line services
		TOTAL	7.25		
Completions Daily Report • 2020-03-12					



Time Log Report
STRATEGIC ET AL CAMERON A-03 60 10N, 117 30W • #2047

13:00 18:00 5.00 hr

Hold operational safety meeting and issue safe work permit. Conduct a Radial cement bond log high speed pass to 1480 mKB. Tag fluid level @ 35 mKB. Conduct main pass coming out of hole. Field estimated Cement to surface. Rig out Spectrum and release. Install Wind sock and chain well head valves.

TOTAL5.00 hr

Completions Daily Report • 2020-03-13

11:30 12:30 1.00 hr

Held safety meeting, review hazards MSDS of CPF-119WT PPE requirements pressures and pump fill rates. SICP 0 Loaded 90 liters of PureChem CPF-119WT inhibitor and 100 liters 50/50 methanol water mixed filled casing pressured up to 200 kpa bled off pressure to 0 secured well head chained and locked masters and casing valves.

TOTAL1.00 hr

Completions Daily Report • 2020-03-15

08:00 11:00 3.00 hr

Held Pre-job safety meeting with all personal issued work permit, Conducted an LEL sweep at tie in points H2s 0 ppm discussed hazards of the operation spotted Tank truck and tied in to the flow line and hooked up compressor air line to push pressured up opened flow line to tanker. No communication bled off pressure. Heated up risers both end and still could not push the line. Frozen under ground rigged out equipment installed blind flanges securing the flow line Released services

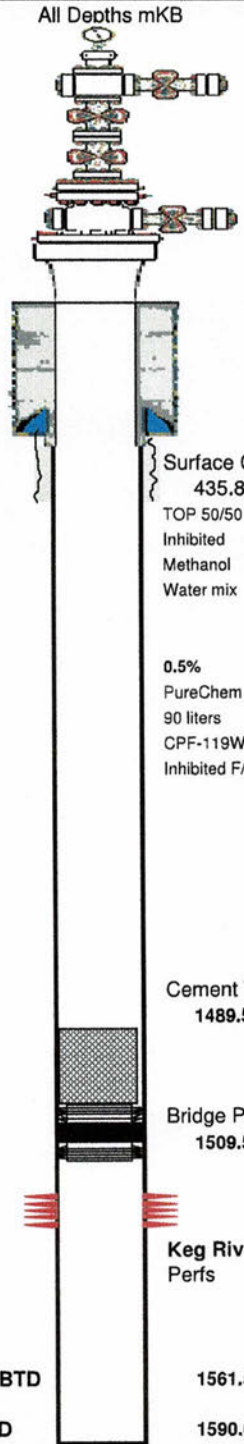
TOTAL3.00 hr



Fluid Movement Report - Well Suspension
STRATEGIC ET AL CAMERON A-03 60 10N, 117 30W • #2047

WELL DATA									
NAME	LICENSE #	COST CENTRE	UWI	LOCATION					
STRATEGIC ET AL CAMERON A-03 60 10N, 117 30W	2047			Cameron Hills NT, Canada					
COMPLETIONS DETAIL									
COMPLETIONS TYPE	START DATE	FINISH DATE	OBJECTIVE						
Standing Cased	2020-03-03	2020-03-15	Well Suspension						
DAILY FLUID MOVEMENT									
Fresh water									
NOTE j-62 rig tank									
DATE	COMPANY	TICKET	SOURCE/DEST	LEASE		WELL		REMAINING	
				TO	FROM	TO	FROM	TANK	WELL
2020-03-06	longway	66550	j-62 rig tank	10.00 m ³				10.00 m ³	0.00 m ³
2020-03-07	pinnacle services		Lake #3	25.00 m ³				35.00 m ³	0.00 m ³
TOTAL				35.00 m³	0.00 m³	0.00 m³	0.00 m³	35.00 m³	0.00 m³

STRATEGIC ET AL CAMERON A-03 60 10N, 117 30W



SURFACE:	300A036010117300	LICENCE:	2047
PREPARED BY:	Maurice Bujold	DATE:	April 25/2020

ELEVATIONS (m)			
KB:	772.80 m	KB-GL:	5.40
GL:	767.40 m	PBTD:	1561.50
		KB-CF:	
		KB-TF:	
		TD:	1590.00
		TVD:	1590.00

Description	Size [mm]	Weight (kg/m)	Grade	Landing Depth [mKB]
Surface Csg	219.1	35.72	J-55	435.80
Production Csg.	177.8	34.23	J-55	1589.60

WELLHEAD

MAKE/TYPE/SIZE/RATING:	Data not taken
-------------------------------	----------------

DOWN HOLE CONFIGURATION

ITEM	No.Jts.	Bottom up	Length (m)	Bottom (mKB)
1				0.00
2				0.00
				0.00
				0.00
				0.00
				0.00
				0.00
				0.00
				0.00
				0.00
				0.00

Rod String

PERFORATIONS/OPEN HOLE SECTION

Zone:	Keg River	Interval:	1523.0-1542.0
Zone:	Sulphur Point	Interval:	

SURFACE EQUIPMENT

Pump Unit	SN
Prime Mover (hp)	SN
SPM/SL(position)	Belts