

WELL INSPECTION REPORT

INSTRUCTIONS:

- | | | |
|--------------------------------|--|--|
| <p>1. Complete both pages.</p> | <p>2. Send one electronic copy of this form and supporting technical documentation by email to orogo@gov.nt.ca.</p> | <p>3. Send one signed hard copy of this form and supporting technical documentation by courier to:
 Chief Conservation Officer
 Office of the Regulator of Oil and Gas Operations
 4th floor Northwest Tower
 5201 50th Avenue
 Yellowknife NT X1A 3S9</p> |
|--------------------------------|--|--|

WELL INFORMATION

Well Name:	Paramount Berkley SW Arrowhead O-15		
Coordinates: <i>(verify onsite)</i>	Lat:	60 ° 24 ' 53 "	Long: 123 ° 02 ' 31 "
	Datum:	NAD83	
Well Operator:	Paramount Resources Ltd	Status:	Suspended
Current Inspection Date:	2020/09/29	WID:	1834
Previous Inspection Date:	2019/09/02	Completed in H ₂ S zone?	No; % of H ₂ S:

EVALUATION

Site

Accessible for inspection and monitoring?	Yes; Via helicopter
Equipment or debris on site?	No;
Additional clean up required?	No;
Any environmental or safety concerns? (see Note 1)	No;
Number of photos attached? (required)	6 (wellhead, valves, signage and site area, other)

Wellhead

Wellhead accessible for inspection and monitoring?	Yes;
Brush cleared 10m around wellhead?	Yes;
Visible well marker in place?	Yes;
Wellhead chained and locked?	Yes;
Pumpjack secure?	No; N/A
Wellhead valves operate freely?	Yes; Intermediate casing valve inaccessible due to grating
Surface casing vent open?	Yes;
Pressure test well head seal assembly?	No;
Pressure rating of all components:	34.5 MPa
Wellhead schematic attached? (required)	No; Not available

OROGO use only

The details of this document have been examined and verified by:

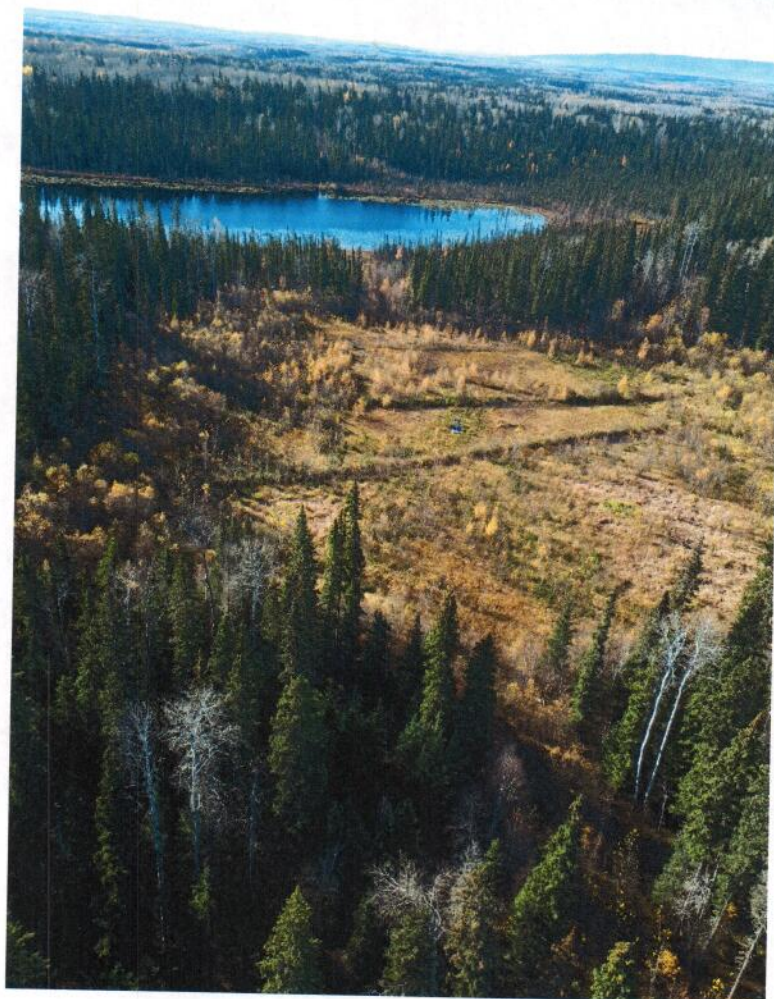
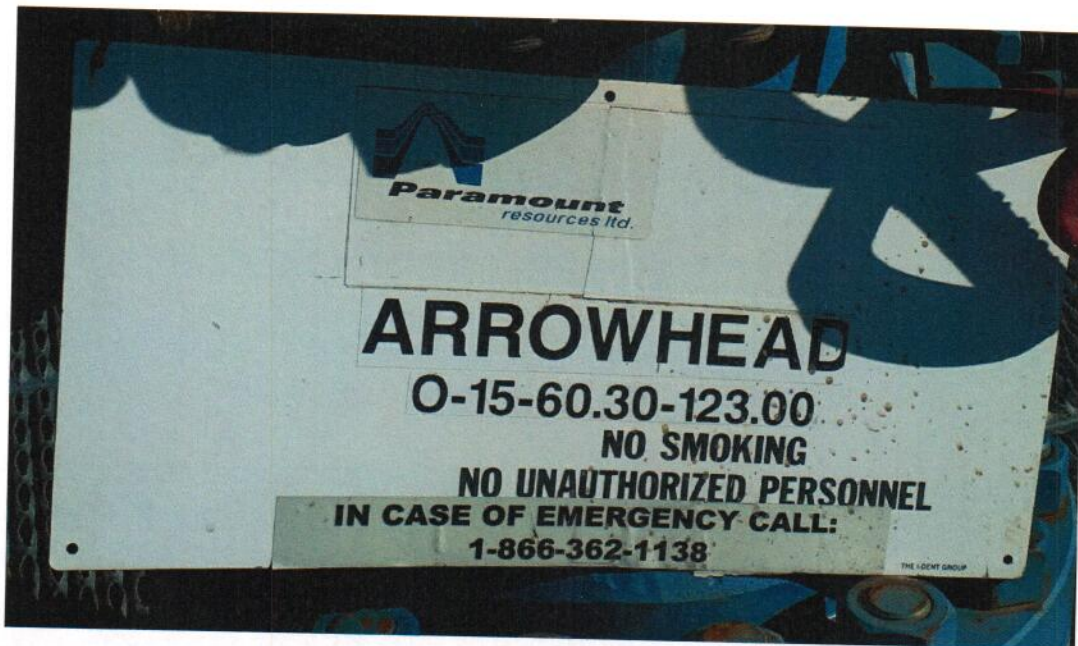
Job Designation _____

Well Identifier _____

Signature _____
Approval Authority

Unique Well Identifier 30_ / _____ - _____ - _____ / _____
(eg. 300 / A01 60-00 120-00 / 0)

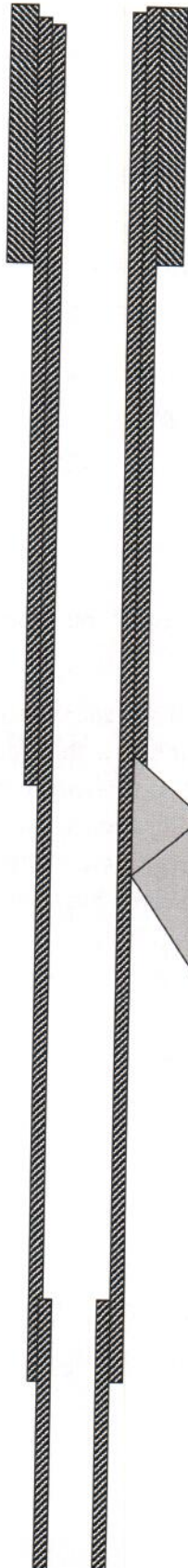
Date _____



Well Schematic

Paramount Berkley Arrowhead O15

All depths are in mKB unless otherwise specified



Surface Hole: (surface – 500)

Hole Size: 444 mm
 Surveys: ¾ @ 463
 Mud Type: Air to 442, gel/chem to 500

Casing: 339.7 mm, 81.1 kg/m, K55
 Landed at 499.9 m KB

Cement: Lead: 31 T 0:1:0 Class "G" + 1% CaCl₂
 Tail: 27 T Expandomix + 2% CaCl₂
 8 m³ returns

Problems: Fluid & gas flowing up around conductor, had to mud up

Intermediate Hole: (500 – 1455 m)

Hole Size: 311 mm
 Surveys: This section originally kicked out to 15° so was plugged back and re-drilled
 To keep vertical

First Leg: 500 – 1560 m KB
 (partial plug back) Drilled with foam and air hammer to 867 m, well watered out. Drill with
 Cutter D to 1560 m MD.

Problems: Totco surveys indicated 7°, directional survey read 15°,
 Decision was made to plug back and redrill
 Plug #1: 1195 – 1350 m w/ 16 T 0:1:0 High Density G + 1% CFR + 1% LTR

Casing: 244.5 mm, 64.74 kg/m, L80 landed at 1196 m

Cement: Lead: 21 T LW14 + 2% CaCl₂ + 2% LWA + 2% SMS
 Tail: 29 T 0:1:0 G + 0.4% CFL3 + 1% CFLH + 2% SPC 2
 5 m³ returns

Intermediate Re-Drill

Hole Size: 216 mm
 Mud Type: Cutter D to 1455 m (to get away from old wellbore
 Started blowing well dry to drill with air (road bans were put on and had to
 suspend drilling)

2nd Intermediate hole drill 216 mm 1186 m to 2681 m KB

Casing: 177.8 mm, 38.69 kg/m IL-80 - 0 - 2681 m KB

Main hole liner drill 156 mm hole 2681 - 3085 m KB

Casing: 114.3 mm, 17.26 kg/m, L-80, 2581 m - 3085 m KB



SCV visible in 2019



SCV not visible and grating displaced in 2020

Richard Heenan, P.Eng.
Heenan Energy Services Ltd.