

NOTICE TO POTENTIAL DIRECTLY AFFECTED PERSON(S)

ConocoPhillips Canada Resources Corp. APPLICATION FOR A SIGNIFICANT DISCOVERY DECLARATION FOR THE Dodo Canyon E-76 and Mirror Lake P-20 WELLS (FILE NUMBER: NWT-SDD-2015-001)

On February 17, 2015, ConocoPhillips Canada Resources Corp. applied to the GNWT Regulator of Oil and Gas Operations (the Regulator) for a Significant Discovery Declaration under section 27 of the *Petroleum Resources Act*. The application is in respect of Dodo Canyon E-76 and Mirror Lake P-20 wells, exploration license EL470, and the following applied for lands (also shown on the attached map):

<u>Latitude</u>	<u>Longitude</u>	<u>Section</u>
64° 50' N	126° 30' W	59, 60, 69, 70, 79, 80
64° 50' N	126° 45' W	9, 10, 19, 20
65° 00' N	126° 30' W	51-80
65° 00' N	126° 45' W	1-20, 22-30, 34-40, 45-50, 56-60, 66-70, 76-80
65° 00' N	127° 00' W	7-10, 18-20, 28-30, 39, 40, 50, 60
65° 10' N	126° 30' W	51-57, 60-66, 71-76
65° 10' N	126° 45' W	1-6, 11-16, 21-27, 31-38, 41-80
65° 10' N	127° 00' W	1-58
65° 20' N	126° 30' W	51-54, 61-64, 71-74
65° 20' N	126° 45' W	1-4, 11-14, 21-24, 31-33, 41-43, 51-53, 61-63, 71-73
65° 20' N	127° 00' W	1-3, 11-13, 21-23, 31, 32, 41

A Significant Discovery Declaration, if issued, is limited to confirming the existence of a “significant discovery”, as defined in the *Petroleum Resources Act*, and the area of any such discovery. It does not authorize any oil and gas works or activities.

In order to fully assess ConocoPhillips Canada Resources Corp.’s application for a Significant Discovery Declaration, the Regulator would like to identify any persons directly affected by this application. If you believe you should be considered a directly affected person (DAP) for the purposes of this application, you may file a submission with the Regulator. Your submission should clearly explain:

- Why you believe you are directly affected by the proposed Significant Discovery Declaration; and
- What technical information (for example, well history, seismic data, etc.) you will be able to provide to help the Regulator to determine the existence and extent of any Significant Discovery.

More information on what it means to be a DAP and how DAPs contribute to the process of assessing an application for a Significant Discovery Declaration can be found on the website of the Office of the Regulator of Oil and Gas Operations (OROGO) at <http://oilandgasregulator.iti.gov.nt.ca/documents>.

Your submission to be considered a DAP must be filed with the Regulator (address below) and served upon ConocoPhillips Canada Resources Corp. by April 1, 2015.

Mr. James Fulford
Chief Conservation Officer
Office of the Regulator of Oil and Gas Operations
PO Box 1320
Yellowknife NT X1A 2L9
Email: orogo@gov.nt.ca
Phone: 867-920-6267

ConocoPhillips Canada Resources Corp.
401-9th Avenue, SW
Calgary, Alberta
T2P 2H7

ConocoPhillips Canada Resources Corp. will have until May 1, 2015 to file any comments on your submission to be considered a DAP with the Regulator and to serve those comments upon you.

You will then have until May 16, 2015 to file your response to these comments with the Regulator and to serve your response upon ConocoPhillips Canada Resources Corp. at the address provided above.

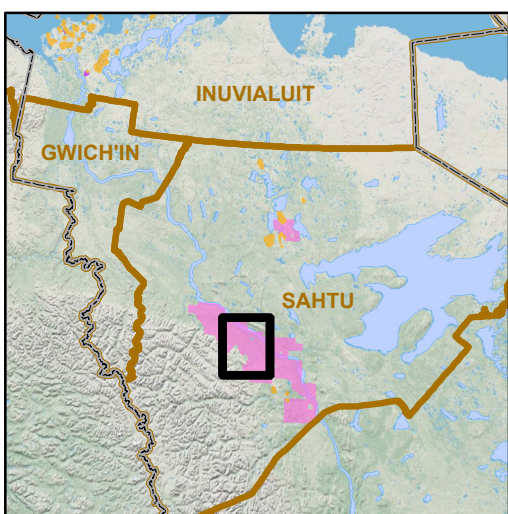
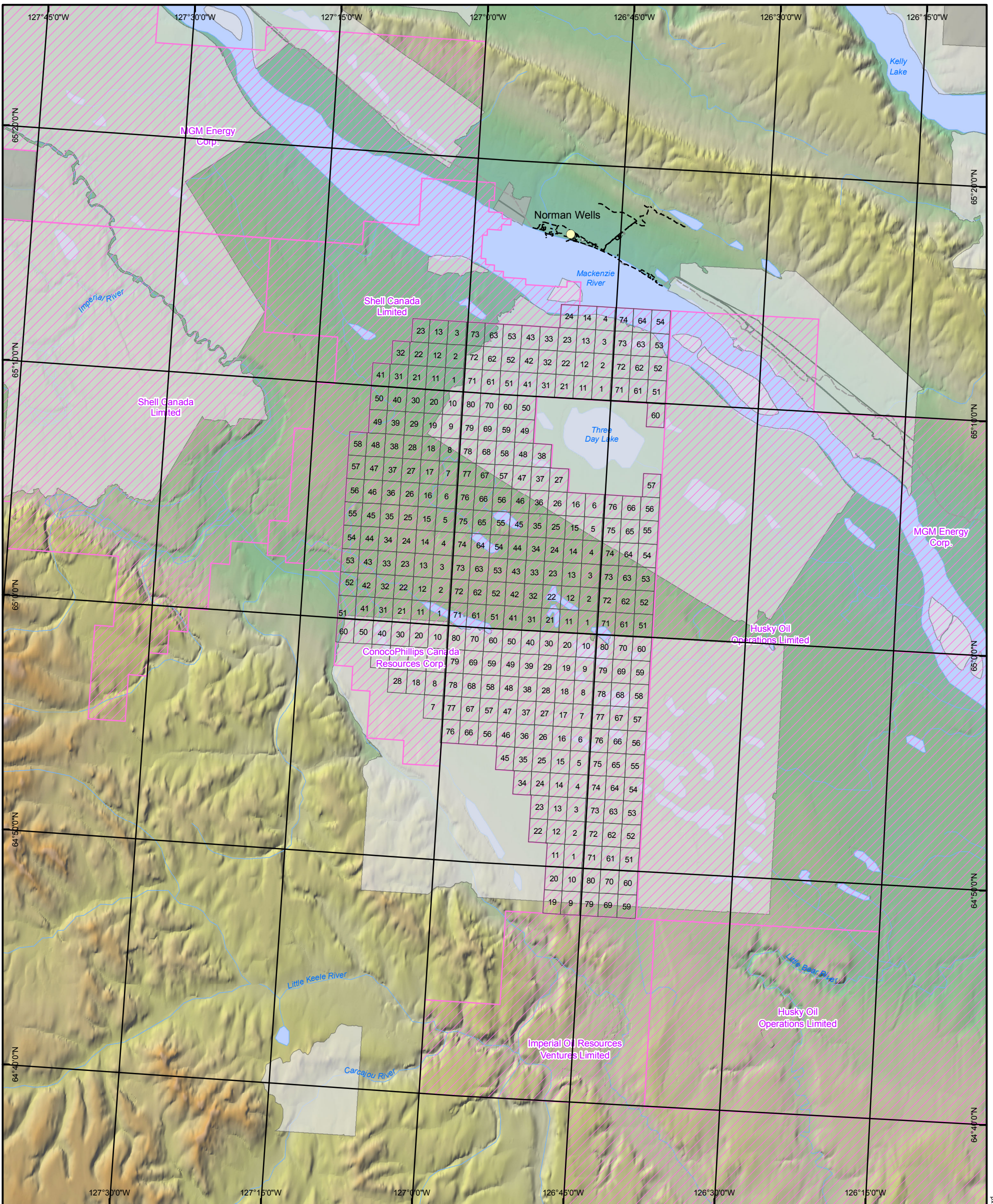
Once the Regulator has assessed ConocoPhillips Canada Resources Corp.'s application for a Significant Discovery Declaration, the Regulator will issue a written notice of his intention to make a decision. The notice of intention will be sent to ConocoPhillips Canada Resources Corp. and to any persons the Regulator determines to be DAPs at least 30 days before the Regulator makes a final decision on the application. The notice of intention will include instructions for requesting a hearing into the Significant Discovery Declaration, if desired.

The Regulator will also communicate with you if your DAP submission is not accepted to advise you of that decision and the reasons.

If you have any questions, or if you require additional information, please contact Ms. Pauline de Jong, Senior Advisor, Legislation and Policy, at 867-920-6978 or by email at pauline_dejong@gov.nt.ca.

Map Caption: Applied for Significant Discovery Area

APPLIED FOR SIGNIFICANT DISCOVERY AREA / PÉRIMÈTRE DE DÉCOUVERTE IMPORTANTE DEMANDÉ



LEGEND / LÉGENDE

- ROADS / ROUTES**
- PAVED / PAVÉE
 - - - UNPAVED / NON PAVÉ
 - - - WINTER / HIVER
- NWT OIL AND GAS RIGHTS / TNO PÉTROLE ET DU GAZ DROITS**
- ▨ EXPLORATION LICENCE / LE PERMIS D'EXPLORATION
- ABORIGINAL OWNED LANDS / TERRES AUTOCHTONES APPARTENANT**
- SURFACE
 - SURFACE/SUBSURFACE / SURFACE/SOUTERRAIN
- APPLIED FOR SIGNIFICANT DISCOVERY AREA / PÉRIMÈTRE DE DÉCOUVERTE IMPORTANTE DEMANDÉ**
- SECTIONS

DISCLAIMER

THIS MAP IS FOR ILLUSTRATIVE PURPOSES ONLY. ACTUAL FEATURE BOUNDARIES DEPICTED MAY NOT BE EXACTLY AS SHOWN. OFFICE OF THE REGULATOR OF OIL AND GAS OPERATIONS AND THE NWT CENTRE FOR GEOMATICS ARE NOT RESPONSIBLE FOR ERRORS OR DISCREPANCIES. / CETTE CARTE EST À TITRE INDICATIF SEULEMENT. RÉEL LIMITES DE LONGS DÉCRITS PEUVENT NE PAS ÊTRE EXACTEMENT COMME INDIQUÉ. BUREAU DE LA RÉGLEMENTATION DES OPÉRATIONS PÉTROLIÈRES ET DE LA CENTRE DES TN-O POUR LA GÉOMATIQUE SONT PAS RESPONSABLES DES ERREURS OU LES ÉCARTS.

4 2 0 4			
1:300,000 KILOMETERS / KILOMÈTRES			
GIS	SL	2/27/2015	Doc ID: MXD-450
QA/QC			